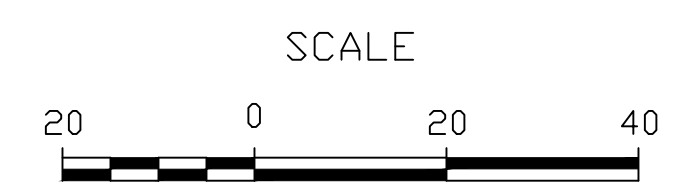
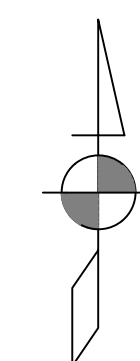
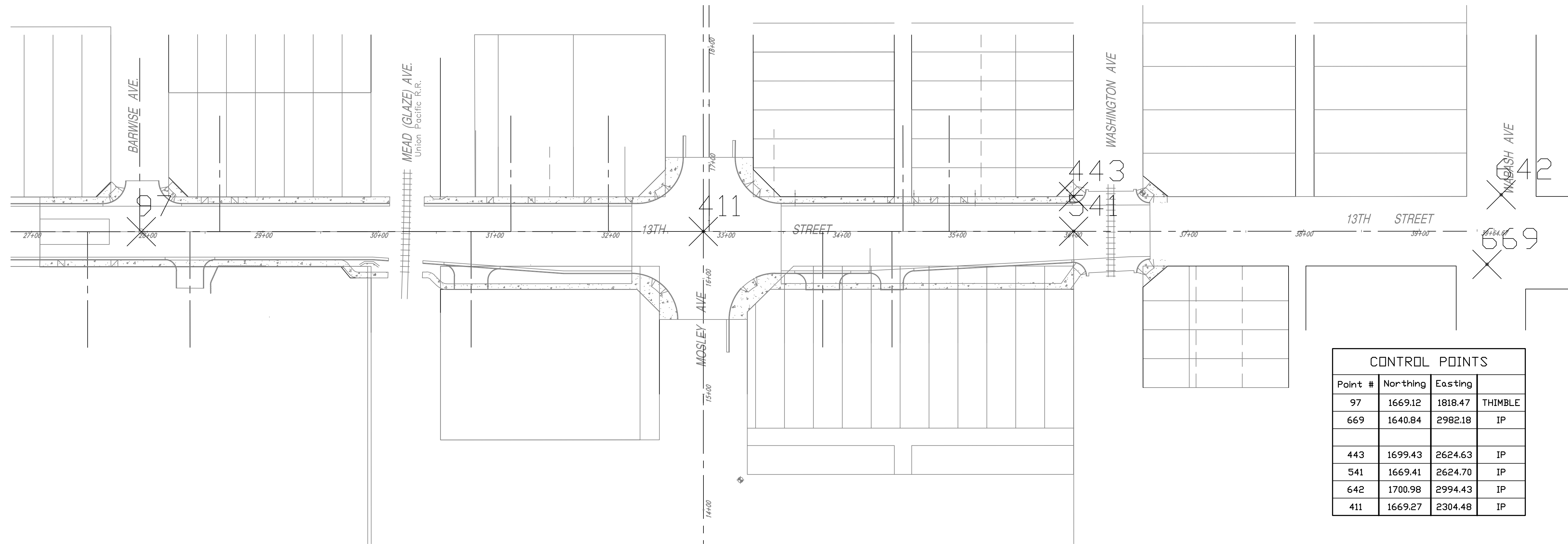


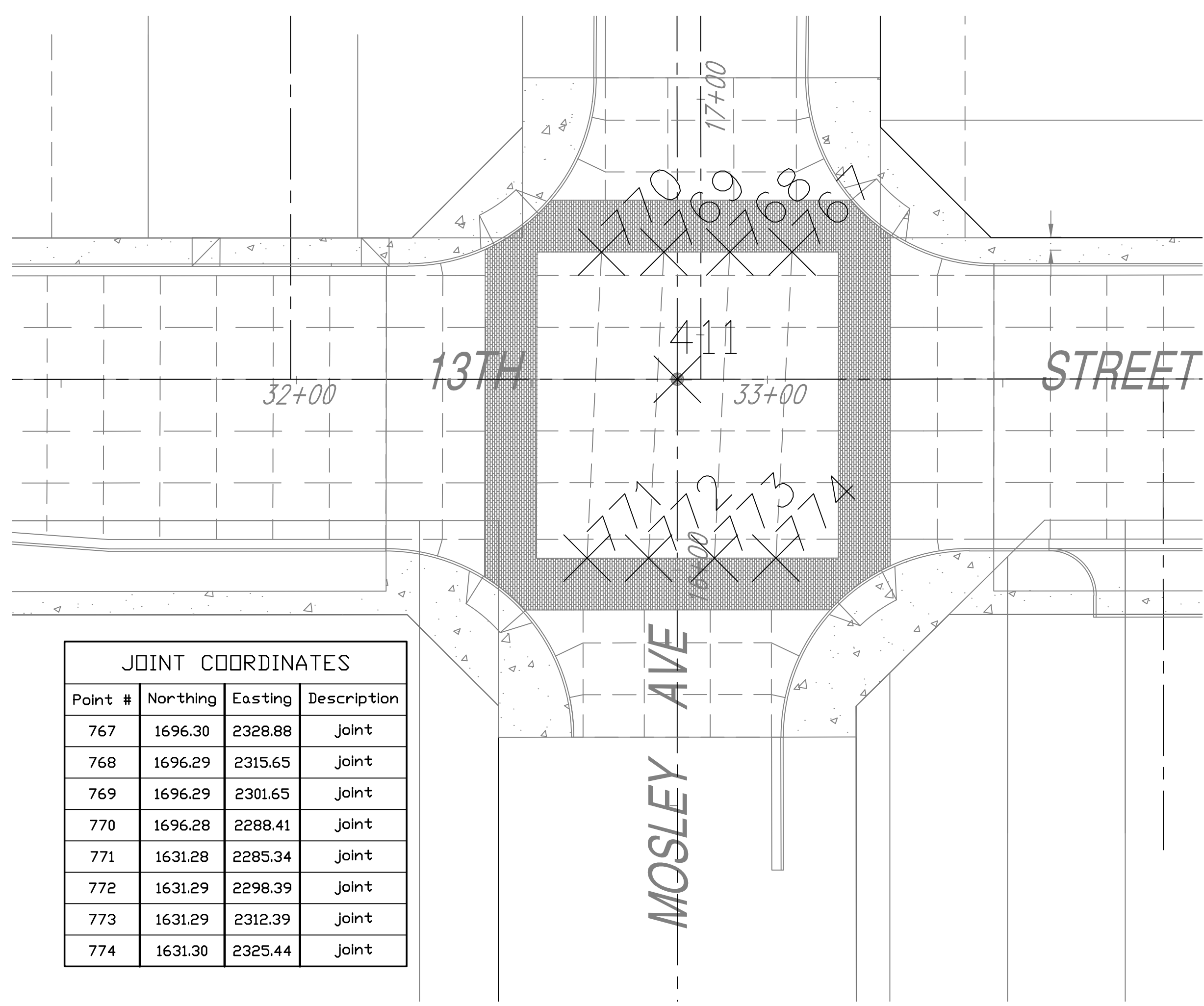
STATE	PROJECT NO.	YEAR	SHEET NO.	TOTAL SHEETS
KANSAS	87N-0238-01	2009	51	59



DATE
BY
REFERENCES NOTED
REFERENCES CHECKED



CONTROL POINTS			
Point #	Northing	Easting	
97	1669.12	1818.47	THIMBLE
669	1640.84	2982.18	IP
443	1699.43	2624.63	IP
541	1669.41	2624.70	IP
642	1700.98	2994.43	IP
411	1669.27	2304.48	IP



JOINT COORDINATES			
Point #	Northing	Easting	Description
767	1696.30	2328.88	Joint
768	1696.29	2315.65	Joint
769	1696.29	2301.65	Joint
770	1696.28	2288.41	Joint
771	1631.28	2285.34	Joint
772	1631.29	2298.39	Joint
773	1631.29	2312.39	Joint
774	1631.30	2325.44	Joint

KANSAS DEPARTMENT OF TRANSPORTATION
CONTROL POINT COORDINATES
13TH STREET NORTH/MOSLEY AVE.