

STA. 35+37.46
CONSTRUCT 50 L.F. 36" CMP
ADJACENT TO EXISTING CULVERT.
SEE PROFILE SHEET 17.

TRIM TREES AS NECESSARY FOR
CONSTRUCTION. SUBSIDIARY TO
BID ITEM FOR SITE CLEARING
AND RESTORATION.

TRIM TREES AS NECESSARY FOR
CONSTRUCTION. SUBSIDIARY TO
BID ITEM FOR SITE CLEARING
AND RESTORATION.

TRIM TREES AS NECESSARY FOR
CONSTRUCTION. SUBSIDIARY TO
BID ITEM FOR SITE CLEARING
AND RESTORATION.

STA. 30+49.83
BEGIN CONSTRUCTION. SAW
CUT TO NEAT LINE AND
MATCH EXISTING PAVEMENT

STA. 30+49.83 TO STA. 34+92.20
CONSTRUCT 22' ASPHALT MAT
PAVEMENT W/ 24' ROCK BASE.

STA. 34+66.78 VALLEY FORGE=
STA. 20+00.00 BRANDYWINE.

STA. 34+92.20 VALLEY FORGE TO
STA. 35+48.18 VALLEY FORGE
CONSTRUCT 63 L.F. CONCRETE
CURB & GUTTER, W=3.5'.
TRANSITION FROM W=2.5' TO
W=3.5' CURB AT STA. 34+92.20.

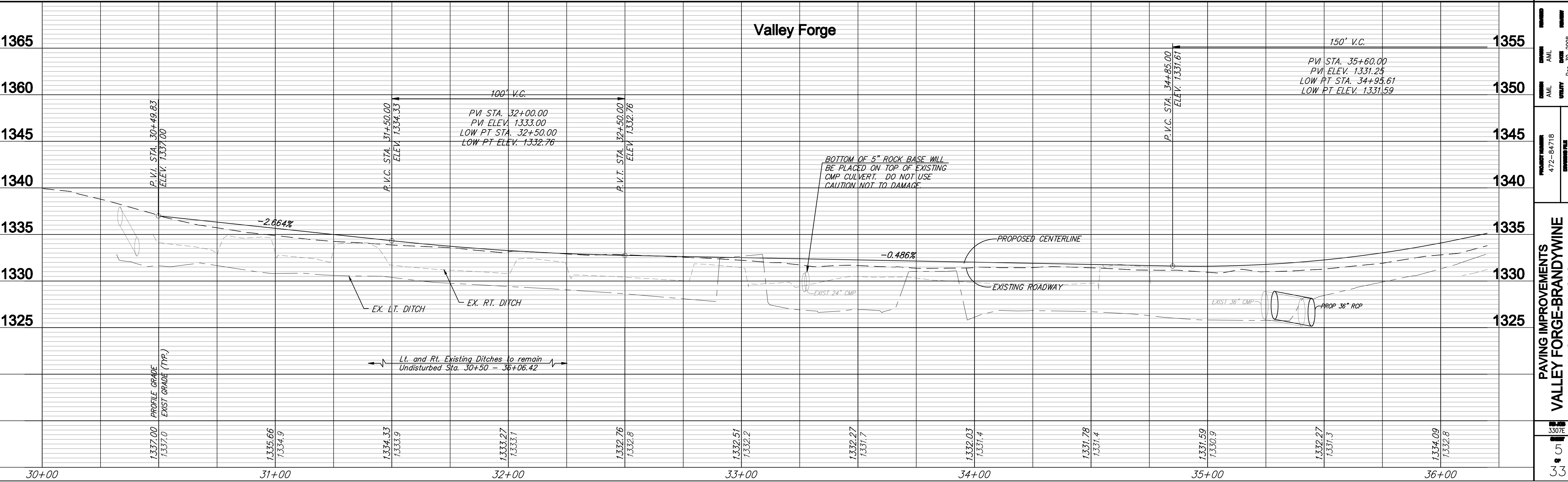
STA. 34+96.00
CONSTRUCT 14 L.F. CONCRETE FLUME
(W=3') WITH 17 S.Y. LIGHT STONE RIP RAP.

Curve #1
Radius = 300.00'
 $\Delta = 101^{\circ}33'$
Length = 47.44'

Curve #2
Radius = 100.00'
 $\Delta = 109^{\circ}19'53''$
Length = 189.07'

CONTRACTOR TO REMOVE
EXISTING YARD LIGHTS AND
PLACE IN OWNERS YARD.

Ruggles & Bohm, Inc.
Engineering, Surveying, Land Planning
and Construction Services
1000 S. 10th St., Suite 100
Wichita, KS 67202
Phone: 316.261.1111
Fax: 316.261.1112
www.rugglesandbohm.com



**PAVING IMPROVEMENTS
VALLEY FORGE-BRANDYWINE
WICHITA, KANSAS**

PROJECT NUMBER: 472-84718
DATE: Dec. 30, 2008
DRAWN BY: [Signature]