

GRADE EXISTING DITCH TO INLET OF PROPOSED CULVERT. USE CAUTION OVER EXISTING 8" W.L. SUBSIDIARY TO "18" RCP".

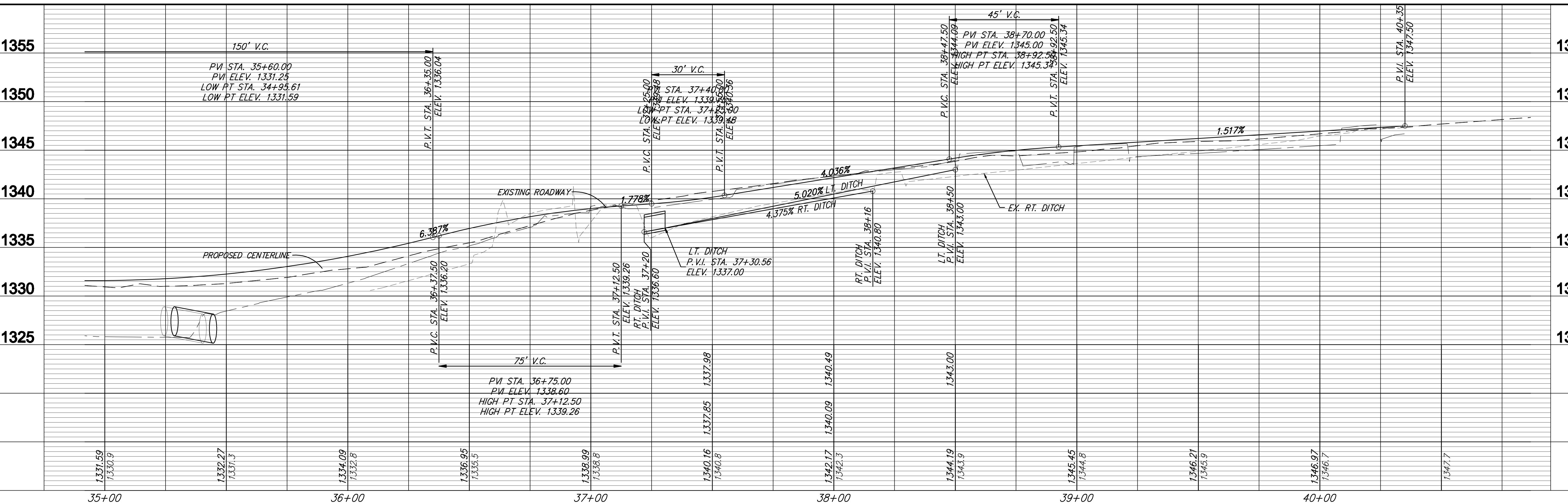
TRIM TREES AS NECESSARY FOR CONSTRUCTION. SUBSIDIARY TO BID ITEM FOR SITE CLEARING AND RESTORATION.

REMOVE EXIST 12" CULVERT.

REMOVE 36" TREE. SUBSIDIARY TO "SITE CLEARING AND RESTORATION"

Curve #3
Radius = 120.00'
Δ = 57°43'14"
Length = 120.89'

Curve #4
Radius = 804.39'
Δ = 30°06'18"
Length = 422.65'



Roughley & Bohling P.A.
Engineering & Surveying
Professional Engineers
Professional Surveyors
Professional Land Surveyors
Professional Geographers

PROJECT NUMBER: 472-84718
DATE: Dec. 30, 2008

PROJECT NAME: VALLEY FORGE-BRANDYWINE
WICHITA, KANSAS

PAVING IMPROVEMENTS
VALLEY FORGE-BRANDYWINE
WICHITA, KANSAS