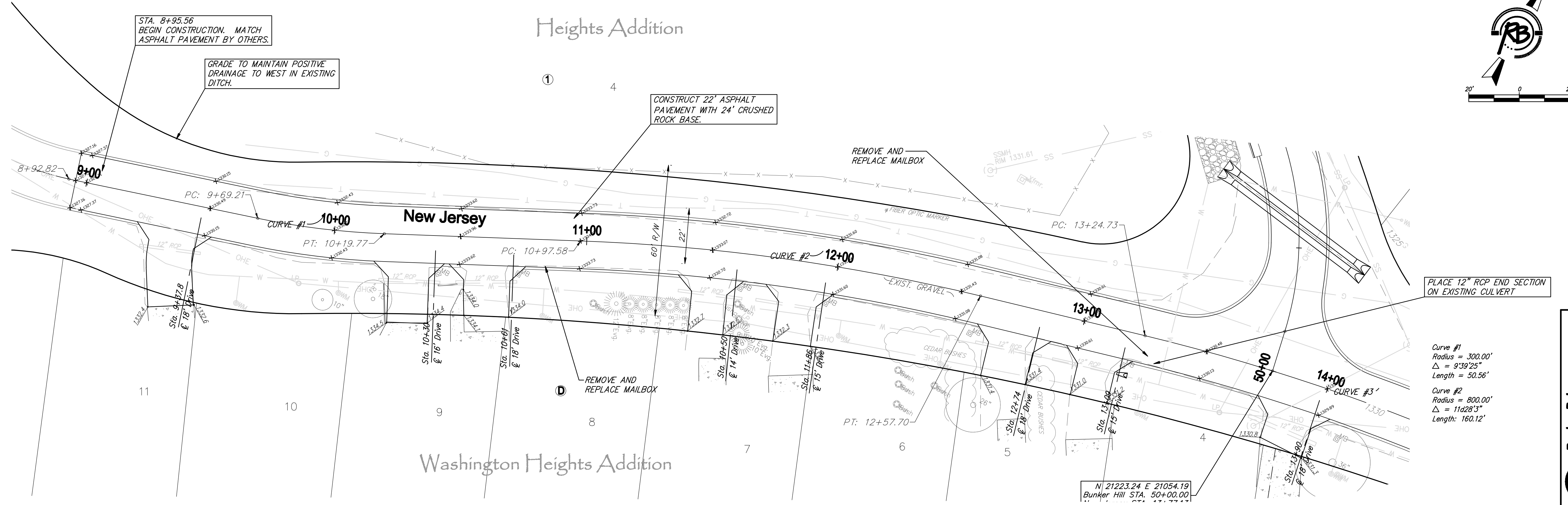
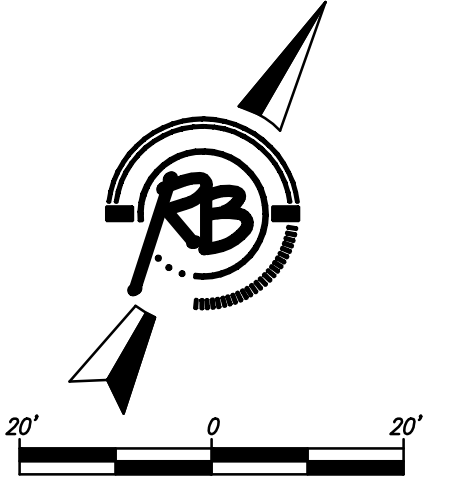


Heights Addition



PLACE 12" RCP END SECTION ON EXISTING CULVERT

Curve #1
Radius = 300.00'
 $\Delta = 9^{\circ}39'25''$
Length = 50.56'

Curve #2
Radius = 800.00'
 $\Delta = 11^{\circ}28'3''$
Length = 160.12'

N 21223.24 E 21054.19
Bunker Hill STA. 50+00.00

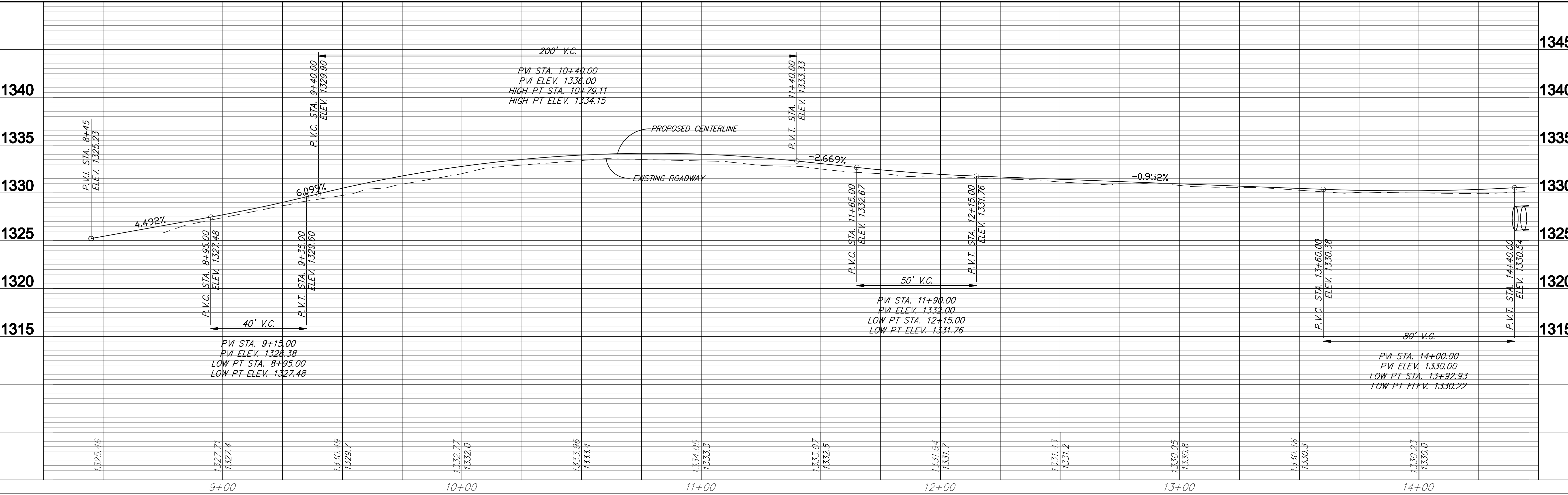
STA. 8+95.56
BEGIN CONSTRUCTION. MATCH
ASPHALT PAVEMENT BY OTHERS.

GRADE TO MAINTAIN POSITIVE
DRAINAGE TO WEST IN EXISTING
DITCH.

CONSTRUCT 22' ASPHALT
PAVEMENT WITH 24' CRUSHED
ROCK BASE.

REMOVE AND
REPLACE MAILBOX

REMOVE AND
REPLACE MAILBOX



Ruggles & Bohma, P.A.
Engineering, Surveying, Land Planning
Professional Engineers
Professional Surveyors
Professional Land Planners
Professional Environmental Scientists
Professional Geologists
Professional Geographers
Professional Historic Preservationists
Professional Archaeologists
Professional Foresters
Professional Horticulturists
Professional Landscape Architects
Professional Meteorologists
Professional Oceanographers
Professional Planners
Professional Public Health and Safety Engineers
Professional Recreation Planners
Professional Scientists
Professional Soil Conservationists
Professional Toxicologists
Professional Water Resources Engineers
Professional Wildlife Biologists
Professional Zoning Administrators

PROJECT NUMBER: 472-84783
DATE: Apr. 21, 2009
Engineering Base (05 New Jersey)

**PAVING IMPROVEMENTS
VALLEY FORGE-BRANDYWINE
WICHITA, KANSAS**

3407E
28