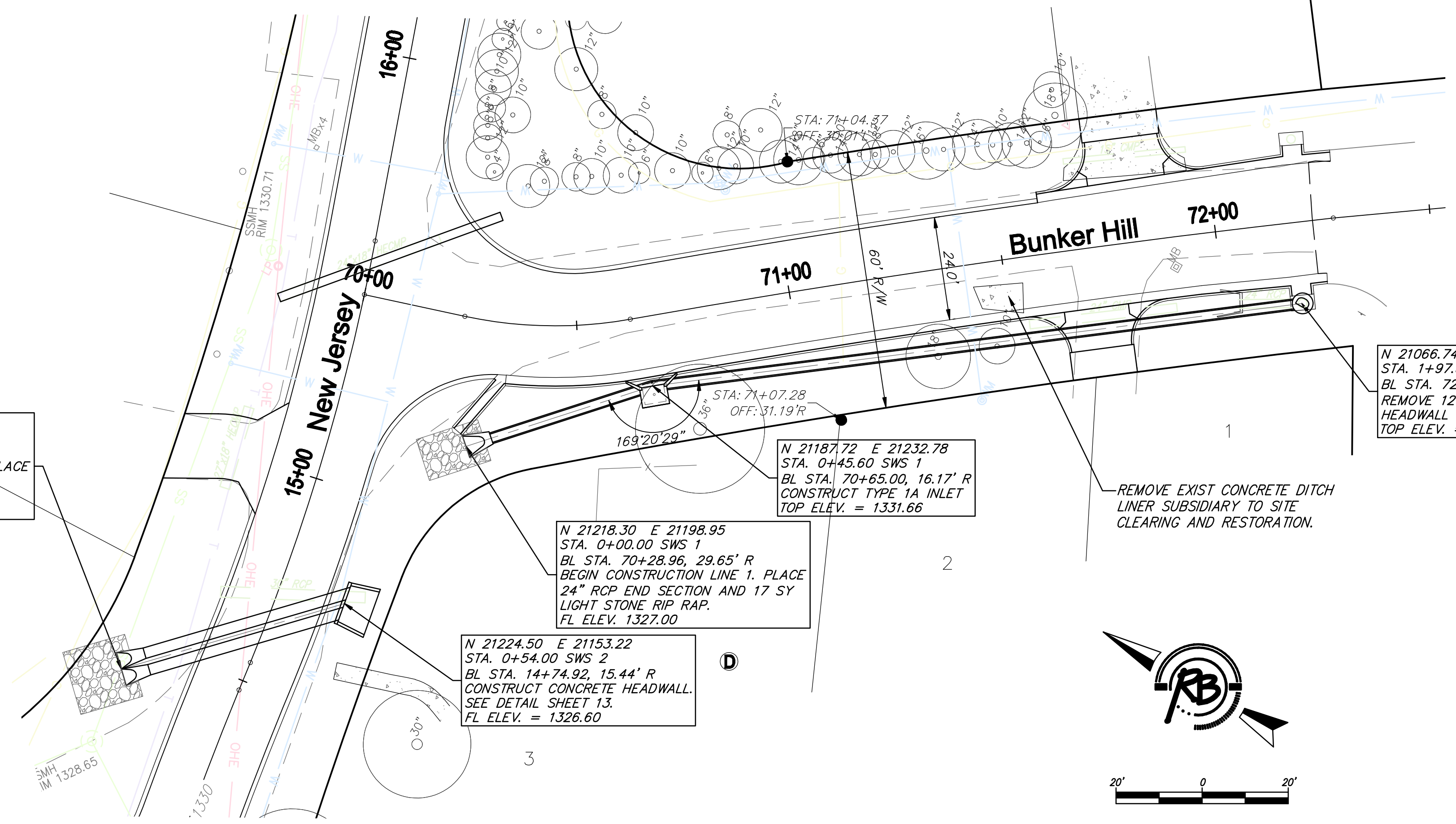


N 21261.79 E 21114.16
 STA. 0+00.00 SWS 2
 BL STA. 14+41.98, 27.15' L
 BEGIN CONSTRUCTION LINE 2. PLACE
 2-30" RCP END SECTIONS AND
 22 SY LIGHT STONE RIP RAP.
 FL ELEV. = 1326.10



N 21218.30 E 21198.95
 STA. 0+00.00 SWS 1
 BL STA. 70+28.96, 29.65' R
 BEGIN CONSTRUCTION LINE 1. PLACE
 24" RCP END SECTION AND 17 SY
 LIGHT STONE RIP RAP.
 FL ELEV. 1327.00

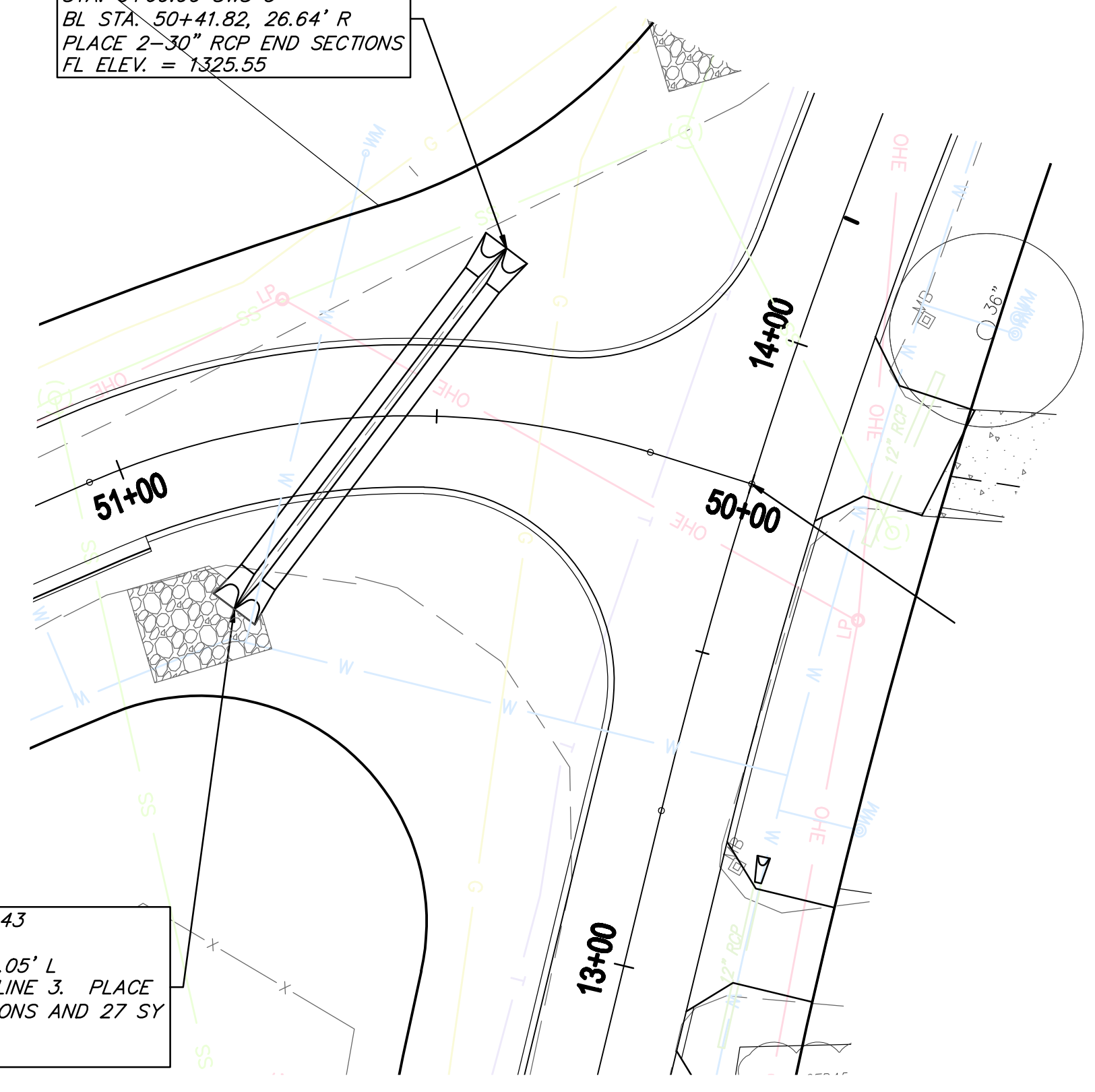
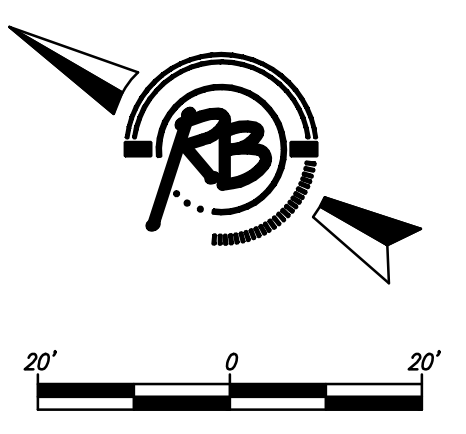
N 21187.72 E 21232.78
 STA. 0+45.60 SWS 1
 BL STA. 70+65.00, 16.17' R
 CONSTRUCT TYPE 1A INLET
 TOP ELEV. = 1331.66

N 21224.50 E 21153.22
 STA. 0+54.00 SWS 2
 BL STA. 14+74.92, 15.44' R
 CONSTRUCT CONCRETE HEADWALL.
 SEE DETAIL SHEET 13.
 FL ELEV. = 1326.60

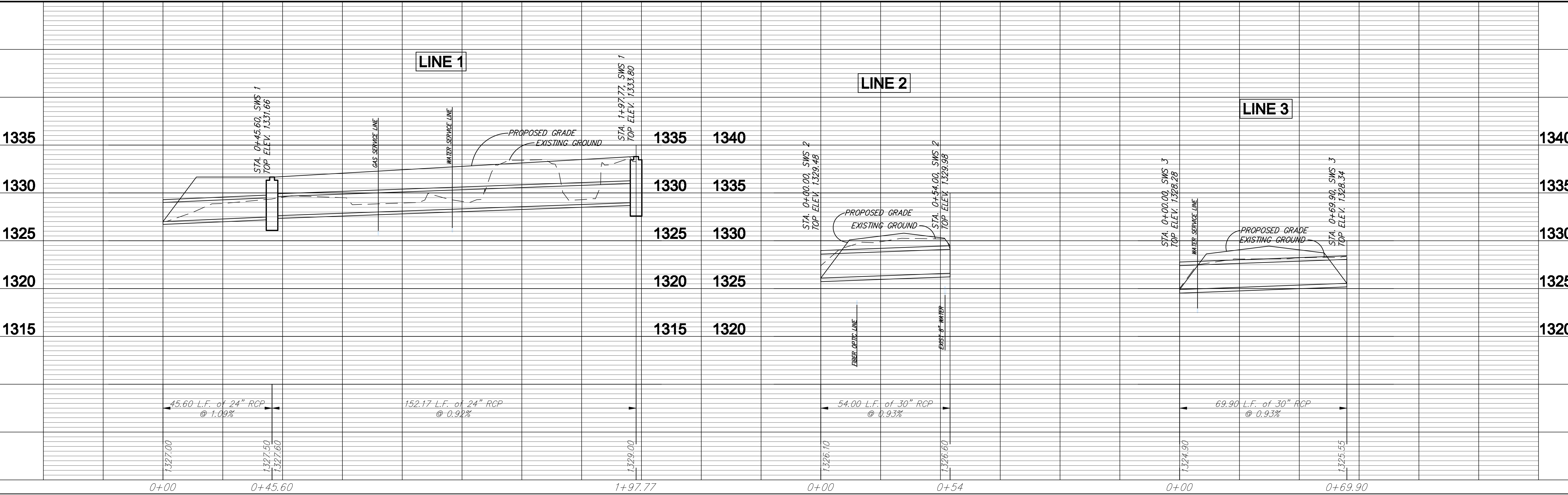
N 21066.74 E 21324.76
 STA. 1+97.58 SWS 1
 BL STA. 72+18.03, 18.89' R
 REMOVE 12 L.F. 24" RCP AND CONCRETE
 HEADWALL CONNECT TO EXISTING INLET.
 TOP ELEV. = 1333.80

N 21274.30 E 21066.80
 STA. 0+69.90 SWS 3
 BL STA. 50+41.82, 26.64' R
 PLACE 2-30" RCP END SECTIONS
 FL ELEV. = 1325.55

N 21282.86 E 20997.43
 STA. 0+00.00 SWS 3
 BL STA. 50+88.97, 26.05' L
 BEGIN CONSTRUCTION LINE 3. PLACE
 2-30" RCP END SECTIONS AND 27 SY
 LIGHT STONE RIP RAP
 FL ELEV. = 1324.90



Ruggles & Bohlen, P.A.
 Engineering, Surveying, Land Planning
 472-84783
 Wichita, Kansas
 Apr. 21, 2009



**PAVING IMPROVEMENTS
 STORM SEWER
 WICHITA, KANSAS**

3407E
 11
 28