

PLAN
 CHECKED
 CHECKED
 BY
 DATE

WL CURVE DATA
 $\Delta=9^{\circ}54'55''$ $R=774.00'$ $L=133.94'$ $T=67.14'$ $E=2.91'$
 CURVE DATA BASED ON \odot RADIUS $\Delta/2=4^{\circ}57'27.5''$

WL STATION	WL ARC LENGTH	CHORD LENGTH ON 6' OFFSET Right	DEFLECTION ANGLE	TOTAL DEFLECTION
PC 44+02.49			0°00'00"	0°00'00"
44+25.00	22.51'	22.33'	0°48'59.4"	0°48'59.4"
44+50.00	25.00'	24.81'	0°55'31.2"	0°1'45'30.5"
44+75.00	25.00'	24.81'	0°55'31.2"	0°2'41'01.7"
45+00.00	25.00'	24.81'	0°55'31.2"	0°3'36'32.9"
45+25.00	15.00'	14.95'	0°33'28.0"	0°4'32'04.0"
PT 45+36.43	11.43'	11.34'	0°25'23.0"	0°4'57'27.5"
TOTAL	L=133.94'		Defl./L=2.220767 min.	

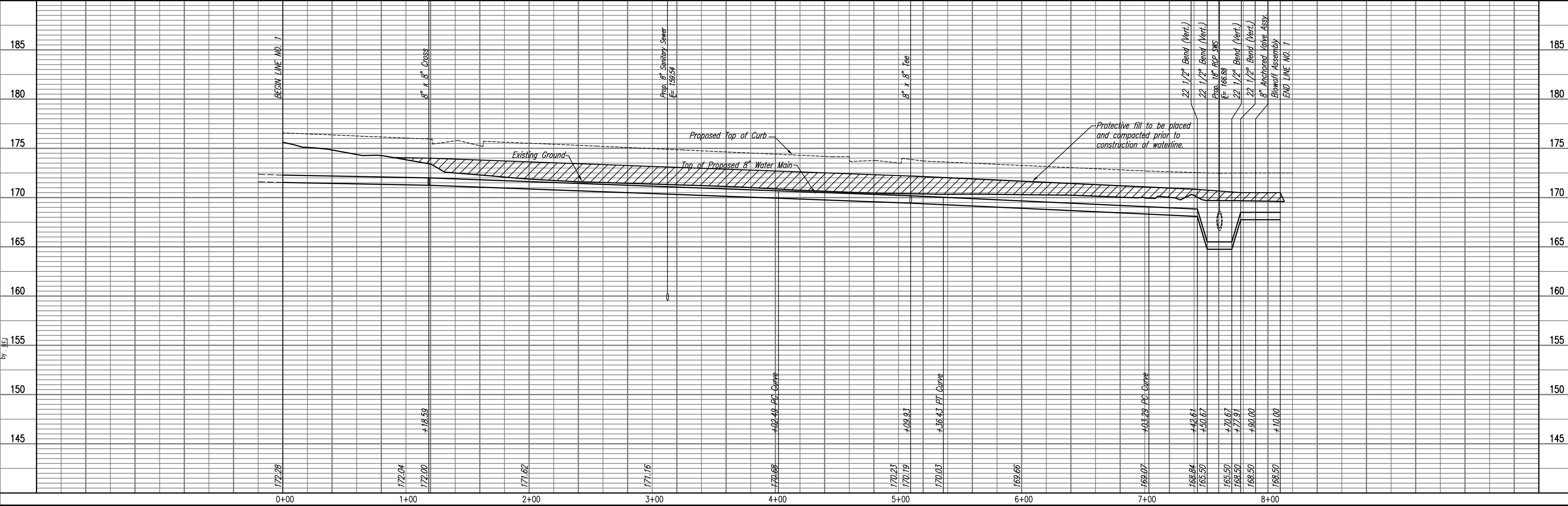
WL CURVE DATA
 $\Delta=38^{\circ}48'35''$ $R=774.00'$ $L=220.82'$ $T=114.83'$ $E=19.63'$
 CURVE DATA BASED ON \odot RADIUS $\Delta/2=19^{\circ}24'17.5''$

WL STATION	WL ARC LENGTH	CHORD LENGTH ON 6' OFFSET Right	DEFLECTION ANGLE	TOTAL DEFLECTION
PC 74+25.00			0°00'00"	0°00'00"
74+25.00	21.71'	22.11'	1°54'28.1"	1°54'28.1"
74+42.61	17.61'	17.93'	1°32'51.1"	0°3'22'19.2"
74+50.00	7.39'	7.59'	0°38'57.0"	0°4'08'17.1"
74+56.61	0.61'	0.68'	0°03'32.0"	0°4'08'49.0"
74+70.67	20.00'	20.36'	1°45'27.1"	0°5'55'16.2"
74+75.00	4.33'	4.41'	0°22'49.8"	0°8'18'06.0"
74+77.91	2.91'	2.98'	0°15'20.8"	0°8'33'26.8"
74+90.00	12.00'	12.31'	1°03'44.8"	0°9'37'11.3"
84+00.00	10.00'	10.18'	0°52'43.6"	0°8'29'54.9"
84+10.00	10.00'	10.18'	0°52'43.6"	0°9'22'38.5"
84+25.00	15.00'	15.27'	1°13'05.4"	1°9'41'43.9"
84+50.00	25.00'	25.45'	2°11'48.9"	1°2'53'32.8"
84+75.00	25.00'	25.45'	2°11'48.9"	1°5'05'21.7"
84+100.00	25.00'	25.45'	2°11'48.9"	1°7'17'10.7"
PT 84+24.11	24.11'	24.55'	2°07'07.4"	1°9'24'37.6"
TOTAL	L=220.82'		Defl./L=5.272618 min.	

* PRIOR TO BEGINNING CONSTRUCTION, THE CONTRACTOR SHALL EXCAVATE THE EXISTING 8" WATERLINE AT STATION 0+00.00 TO VERIFY PIPE SIZE, TYPE, FITTINGS, AND HORIZONTAL AND VERTICAL LOCATION. THE CONTRACTOR SHALL REPORT HIS FINDINGS TO THE ENGINEER SO THAT ANY NECESSARY PLAN MODIFICATIONS CAN BE MADE. ANY ADDITIONAL LABOR OR MATERIALS NECESSARY TO COMPLETE THE CONNECTION SHALL BE CONSIDERED SUBSIDIARY TO THE PROJECT.

Unless noted otherwise, elevations shown are top of pipe

WATERLINE NO. 1



N: 26,525.0851, E: 16,142.1511
 @ Fontana, Sta. 67+25.59, 23.00' Lt.=
 WL 1, Sta. 0+00.00
 Existing Blowoff Assembly *
 Remove 8" CI MJ Cap and begin
 new 8" water main installation.

N: 26,583.3928, E: 16,038.9085
 @ Fontana, Sta. 66+07.00, 23.00' Lt.=
 WL 1, Sta. 1+18.59
 1- 8" x 8" CI CL MJ Cross
 3- 8" Valve Assemblies (SSW,NNE&WNN)
 (MJ Gate Valves)
 Top Valve Box El.= 176.1 (SSW)
 Top Valve Box El.= 176.2 (NNE)
 Top Valve Box El.= 176.1 (WNN)

LINE NO. 3
 See sheet no. 8

CAUTION !!!
 Proposed 8"
 Sanitary Sewer
 (By others)

@ Fontana, Sta. 62+39.23=
 @ Park Ridge, Sta. 130+00.00

N: 26,781.8244, E: 15,701.9113
 @ Fontana, Sta. 62+12.45, 23.00' Lt.=
 WL 1, Sta. 5+09.93
 1- 8" x 8" CI CL MJ Tee
 1- 8" Valve Assembly (NE)
 (MJ Gate Valve)
 Top Valve Box El.= 174.2

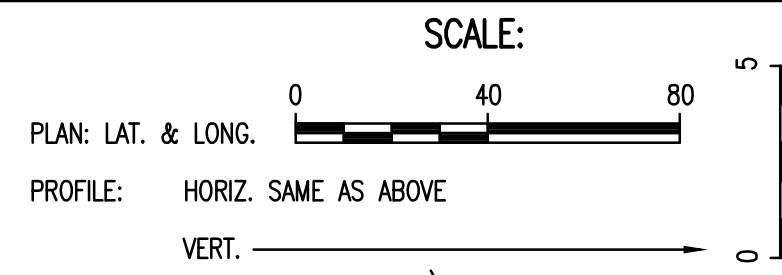
N: 26,926.9456, E: 15,520.2697
 @ Fontana, Sta. 59+81.85, 23.00' Lt.=
 WL 1, Sta. 7+42.61
 1- 8" CI CL MJ 22 1/2" Bend (Vert.)
 Defl.= 22° 09' 32"

N: 26,940.9982, E: 15,495.8805
 @ Fontana, Sta. 59+55.68, 23.00' Lt.=
 WL 1, Sta. 7+70.67
 1- 8" CI CL MJ 22 1/2" Bend (Vert.)
 Defl.= 22° 30' 27"

N: 26,944.2717, E: 15,489.4108
 @ Fontana, Sta. 59+48.94, 23.00' Lt.=
 WL 1, Sta. 7+77.91
 1- 8" CI CL MJ 22 1/2" Bend (Vert.)
 Defl.= 22° 30' 27"

N: 26,949.4075, E: 15,478.4661
 @ Fontana, Sta. 59+37.70, 23.00' Lt.=
 WL 1, Sta. 7+90.00
 1- 8" Anchored Valve Assembly (Special)
 (MJ Gate Valve)
 Top Valve Box El.= 172.7

N: 26,957.0058, E: 15,459.9555
 @ Fontana, Sta. 59+19.10, 23.00' Lt.=
 WL 1, Sta. 8+10.00
 1- 2" Blowoff Assembly
 Top Valve Box El.= 172.7



PROFILE
 CHECKED
 CHECKED
 BY
 DATE

Saved 09-01-2009 12:45:16 PM by TLS
 Plot Scale
 C:\2008\08389\08389-000-0-000-0-000-0-000

Fontana 4th Addition - Phase 1
 WATERLINE IMPROVEMENTS
WATERLINE NO. 1
 JAMES L. ARMOUR, P.E. - CITY ENGINEER
 CITY OF WICHITA PROJECT NO. 448-90426
 Professional Engineering Consultants, P.A.
 603 E. TOPICKA AVENUE, WICHITA, KANSAS 67202
 316-262-2691 • FAX 316-262-3003
 Job No. 35-08389-002-042
 Date July 2008
 Designed By MDK
 Drawn By TLS
 Sheet 4 of 16