

PLAN  
 CHECKED  
 CHECKED  
 BY  
 DATE

PROFILE  
 CHECKED  
 CHECKED  
 BY  
 DATE

WL CURVE DATA				
$\Delta=90^{\circ}0'0''$ Rt $D=45^{\circ}28'22.2''$ $R=126.00'$ $L=197.92'$ $T=126.00'$ $E=52.19'$				
CURVE DATA BASED ON $\odot$ RADIUS $\Delta/2=45^{\circ}0'0''$				
WL STATION	WL ARC LENGTH	CHORD LENGTH ON -6' OFFSET Left	DEFLECTION ANGLE	TOTAL DEFLECTION
PC 6+85.46			0°00'00.0"	0°00'00.0"
7+00.00	14.54'	15.22'	3°18'21.2"	03°18'21.2"
7+25.00	25.00'	26.15'	5°41'02.8"	08°59'24.0"
7+50.00	25.00'	26.15'	5°41'02.8"	14°40'26.8"
7+75.00	25.00'	26.15'	5°41'02.8"	20°21'29.5"
8+00.00	25.00'	26.15'	5°41'02.8"	26°02'32.3"
8+25.00	25.00'	26.15'	5°41'02.8"	31°43'35.1"
8+50.00	25.00'	26.15'	5°41'02.8"	37°24'37.9"
8+75.00	25.00'	26.15'	5°41'02.8"	43°05'40.7"
PT 8+83.38	8.38'	8.78'	1°54'19.1"	45°00'00.1"
TOTAL	L=197.92'			Defl./ft.= 13.641852 min.

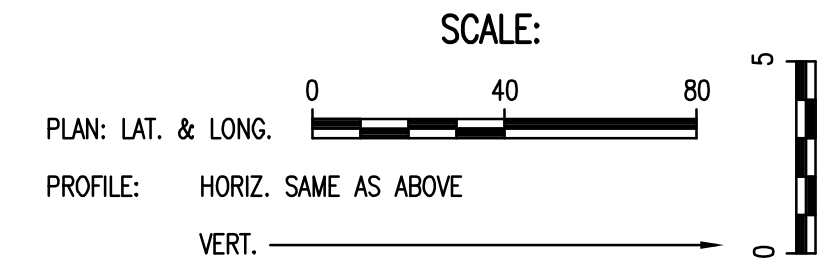
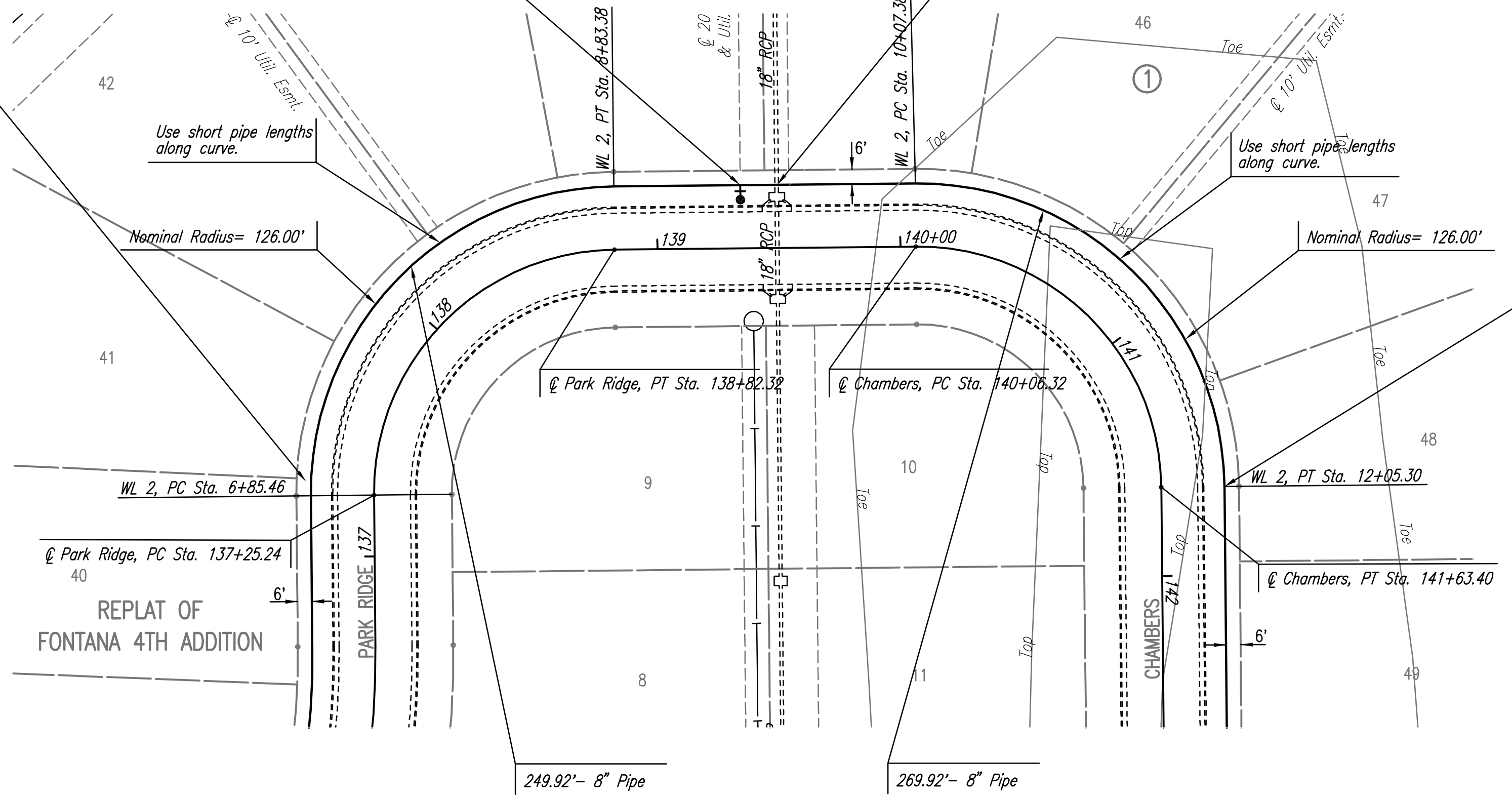
WL CURVE DATA				
$\Delta=90^{\circ}0'0''$ Rt $D=45^{\circ}28'22.2''$ $R=126.00'$ $L=197.92'$ $T=126.00'$ $E=52.19'$				
CURVE DATA BASED ON $\odot$ RADIUS $\Delta/2=45^{\circ}0'0''$				
WL STATION	WL ARC LENGTH	CHORD LENGTH ON -6' OFFSET Left	DEFLECTION ANGLE	TOTAL DEFLECTION
PC 10+07.38			0°00'00.0"	0°00'00.0"
10+25.00	17.62'	18.44'	4°00'22.2"	04°00'22.2"
10+50.00	25.00'	26.15'	5°41'02.8"	09°41'25.0"
10+75.00	25.00'	26.15'	5°41'02.8"	15°22'27.8"
11+00.00	25.00'	26.15'	5°41'02.8"	21°03'30.6"
11+25.00	25.00'	26.15'	5°41'02.8"	26°44'33.4"
11+50.00	25.00'	26.15'	5°41'02.8"	32°25'36.2"
11+75.00	25.00'	26.15'	5°41'02.8"	38°06'39.0"
12+00.00	25.00'	26.15'	5°41'02.8"	43°47'41.7"
PT 12+05.30	5.30'	5.55'	1°12'18.1"	45°00'00.1"
TOTAL	L=197.92'			Defl./ft.= 13.641852 min.

N: 27,393.7046, E: 15,978.5526  
 $\odot$  Park Ridge, Sta. 137+25.24, 26.00' Lt.=  
 WL 2, Sta. 6+85.46  
 Match Point

N: 27,521.5100, E: 16,155.2607  
 $\odot$  Park Ridge, Sta. 139+34.32, 26.00' Lt.=  
 WL 2, Sta. 9+35.38  
 1- Fire Hydrant Assembly  
 L= 4'  
 Top Valve Box El.= 170.0  
 FH Bury Line El.= 169.9

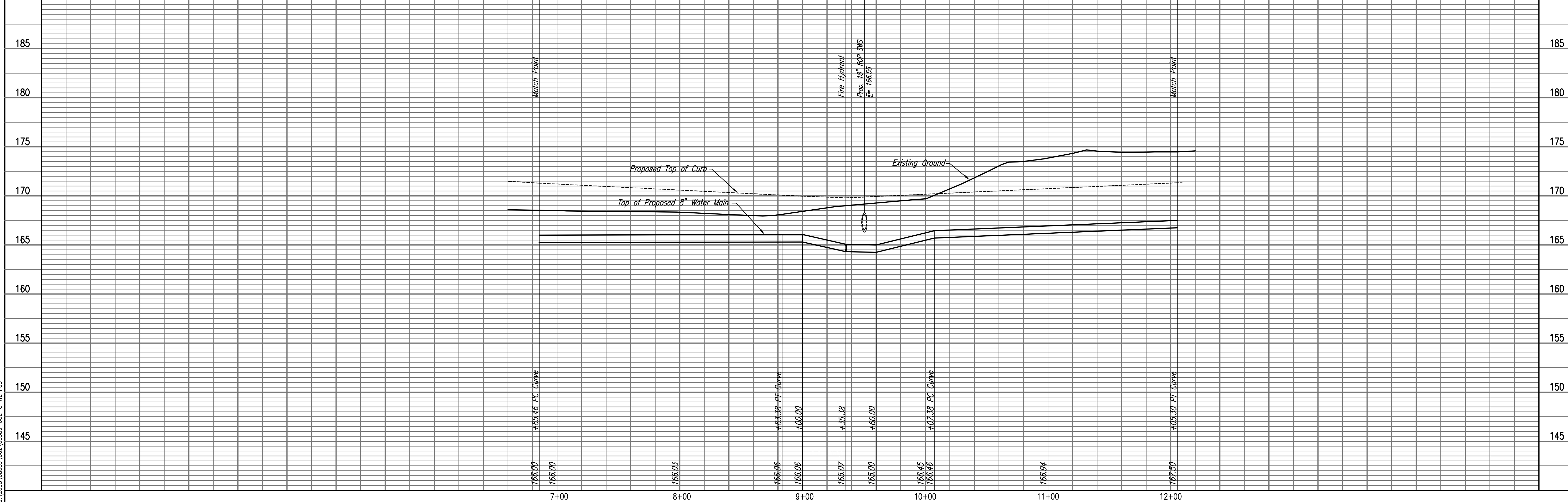
CAUTION !!!  
 Proposed 18" RCP  
 Storm Water Sewer  
 (by others)

N: 27,397.5322, E: 16,354.5331  
 $\odot$  Chambers, Sta. 141+63.40, 26.00' Lt.=  
 WL 2, Sta. 12+05.30  
 Match Point



Unless noted otherwise, elevations shown are top of pipe

WATERLINE NO. 2



Saved: 09-01-2009 12:45:12 PM by: TLS  
 Plot Scale: 1"=40' 09-01-2009 3:57:59 PM  
 G:\2009\08389\002\08389-002-C-WLPP03

Fontana 4th Addition - Phase 1  
 WATERLINE IMPROVEMENTS  
**WATERLINE NO. 2**

Professional Engineering Consultants, P.A.  
 803 E. TOPICKA AVENUE, KANSAS, 67202  
 316-262-2691 • FAX 316-262-3003

Designed By: MDK  
 Drawn By: TLS

Job No. 35-08389-002-042  
 Date: July 2008

JAMES L. ARMOUR, P.E. - CITY ENGINEER  
 CITY OF WICHITA PROJECT NO. 448-90426

Sheet 6 of 16