

**WL CURVE DATA**  
 $\Delta = 29^\circ 58' 59''$  Rt  $D = 17^\circ 34' 31.4''$   $R = 326.00'$   $L = 170.60'$   $T = 87.3'$   $E = 11.49'$   
 CURVE DATA BASED ON  $\odot$  RADIUS  $\Delta/2 = 14^\circ 59' 29.5''$

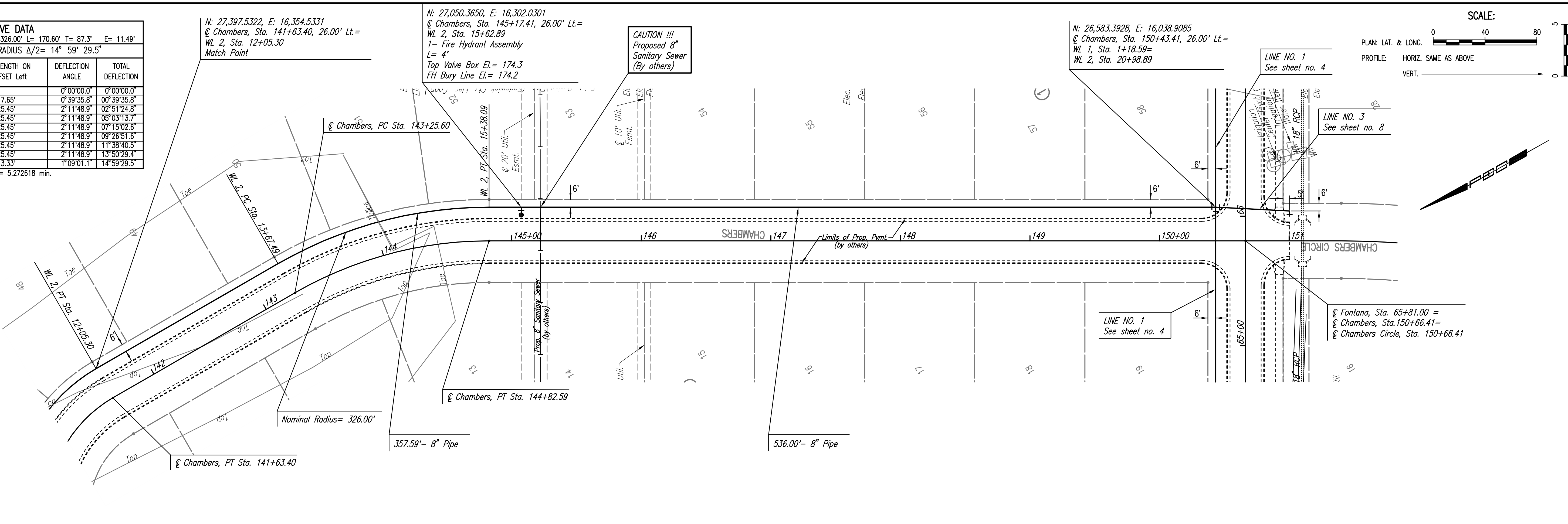
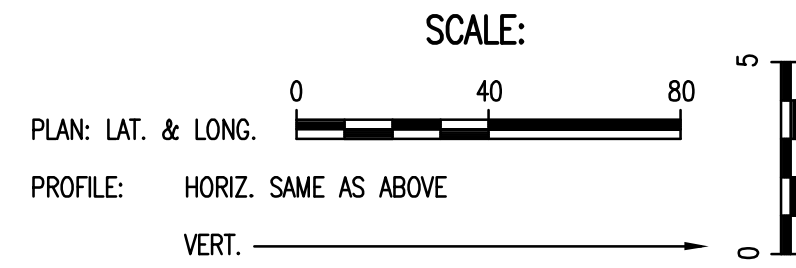
WL STATION	WL ARC LENGTH	CHORD LENGTH ON -6' OFFSET Left	DEFLECTION ANGLE	TOTAL DEFLECTION
PC 13+67.49			0°00'00.0"	0°00'00.0"
13+75.00	7.51'	7.65'	0°39'35.8"	0°39'35.8"
14+00.00	25.00'	25.45'	2°11'48.9"	02°51'24.8"
14+25.00	25.00'	25.45'	2°11'48.9"	05°03'13.7"
14+50.00	25.00'	25.45'	2°11'48.9"	07°15'02.6"
14+75.00	25.00'	25.45'	2°11'48.9"	09°26'51.5"
15+00.00	25.00'	25.45'	2°11'48.9"	11°38'40.5"
15+25.00	25.00'	25.45'	2°11'48.9"	13°50'29.4"
PT 15+38.09	13.09'	13.33'	1°09'01.1"	14°59'29.5"
TOTAL	L = 170.60'	Defl./ft. = 5.272618 min.		

N: 27,397.5322, E: 16,354.5331  
 $\odot$  Chambers, Sta. 141+63.40, 26.00' Lt. =  
 WL 2, Sta. 12+05.30  
 Match Point

N: 27,050.3650, E: 16,302.0301  
 $\odot$  Chambers, Sta. 145+17.41, 26.00' Lt. =  
 WL 2, Sta. 15+62.89  
 1- Fire Hydrant Assembly  
 L = 4'  
 Top Valve Box El. = 174.3  
 FH Bury Line El. = 174.2

CAUTION !!!  
 Proposed 8"  
 Sanitary Sewer  
 (By others)

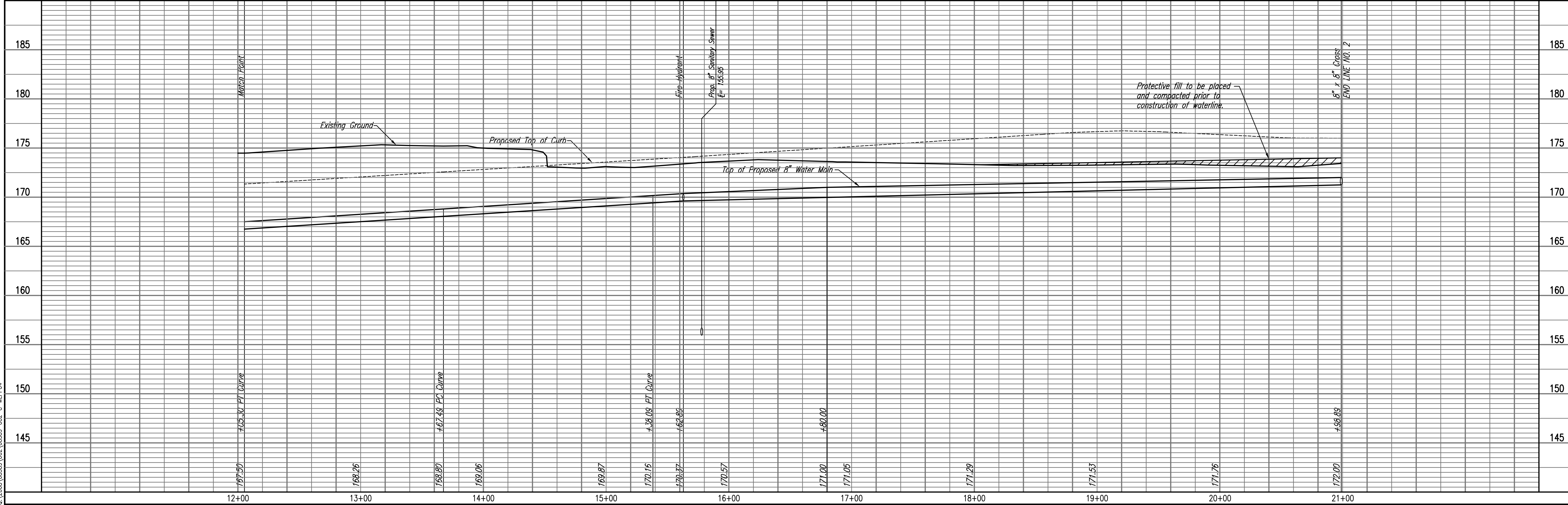
N: 26,583.3928, E: 16,038.9085  
 $\odot$  Chambers, Sta. 150+43.41, 26.00' Lt. =  
 WL 1, Sta. 1+18.59 =  
 WL 2, Sta. 20+98.89



PLAN	CHECKED	BY	DATE
	CHECKED		

Unless noted otherwise, elevations shown are top of pipe

**WATERLINE NO. 2**



PROFILE	CHECKED	BY	DATE
	CHECKED		

Saved: 09-01-2008 10:45:00 AM  
 Plot Scale: 1" = 40'-0"  
 Job No.: 35-08389-002-C-WLPP04

Fontana 4th Addition - Phase 1  
 WATERLINE IMPROVEMENTS  
**WATERLINE NO. 2**  
 Professional Engineering Consultants, P.A.  
 603 E. TOPICKA AVENUE, WICHITA, KANSAS 67202  
 316-262-2691 • FAX 316-262-3003  
 Designed By: MDK  
 Drawn By: TLS  
 Job No.: 35-08389-002-042  
 Date: July 2008  
 Sheet 7 of 16  
 JAMES L. ARMOUR, P.E. - CITY ENGINEER  
 CITY OF WICHITA PROJECT NO. 448-90426