

PLAN	CHECKED	BY	DATE
	CHECKED		

PROFILE	CHECKED	BY	DATE
	CHECKED		

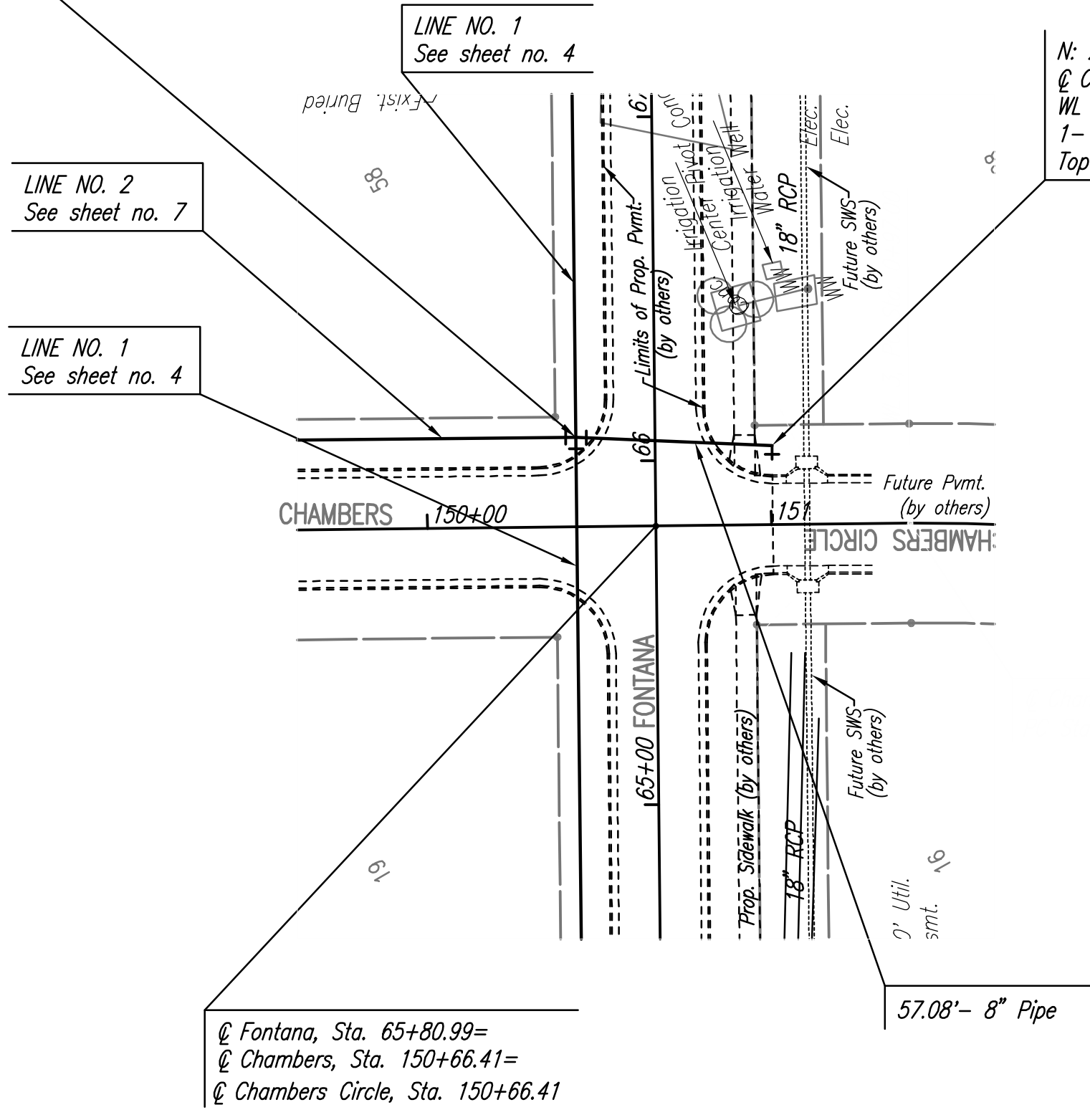
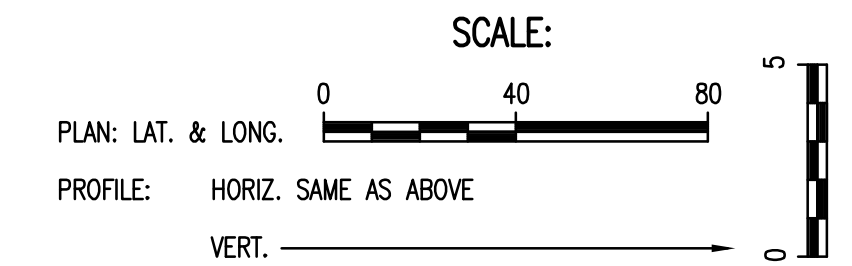
Saved: 09-01-14 09:09:04 045606PWA.DWG
 Plot Scale
 Q:\2008\08389\002\08389-002-C-WP.P05
 by [BCL]

Unless noted otherwise, elevations shown are top of pipe

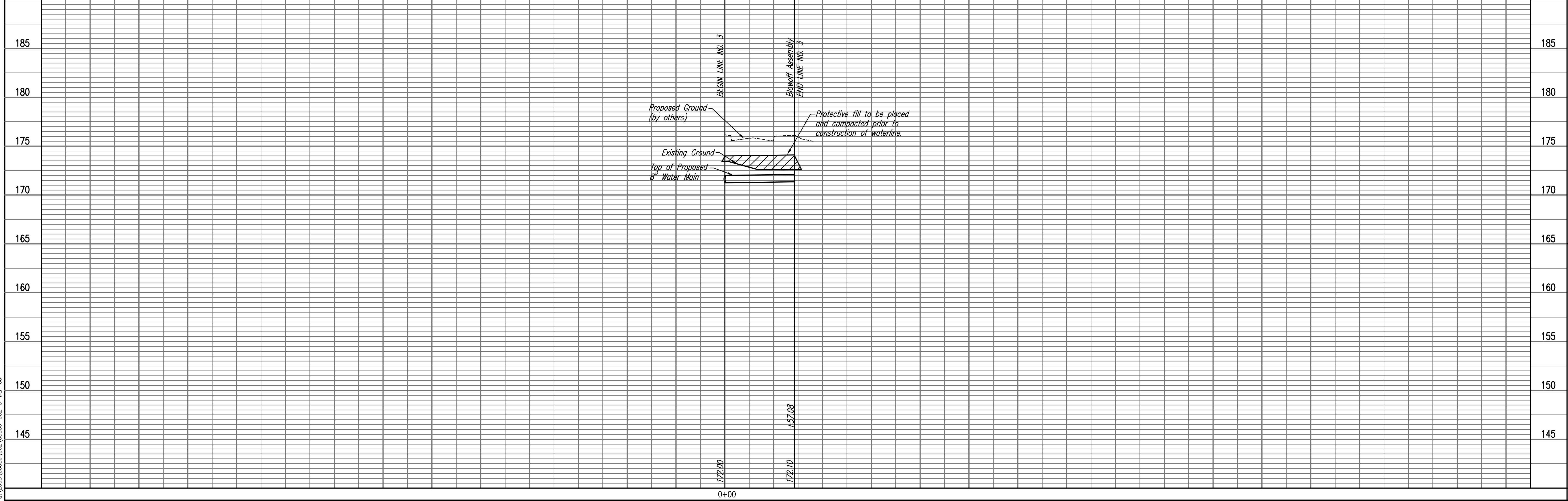
N: 26,583.3928, E: 16,038.9085
 @ Fontana, Sta. 66+07.00, 23.00' Lt.=
 WL 1, Sta. 1+18.59=
 WL 3, Sta. 0+00.00
 Horizontal Deflection
 Defl. = 3° 00' 46" (SSW)

N: 26,535.2061, E: 16,008.3136
 @ Chambers Circle, Sta. 151+00.41, 23.00' Lt.=
 WL 3, Sta. 0+57.08
 1- 2" Blowoff Assembly
 Top Valve Box EL. = 176.3

@ Fontana, Sta. 65+80.99=
 @ Chambers, Sta. 150+66.41=
 @ Chambers Circle, Sta. 150+66.41



WATERLINE NO. 3



Fontana 4th Addition - Phase 1
 WATERLINE IMPROVEMENTS
 WATERLINE NO. 3

Professional Engineering Consultants, P.A.
 603 S. TOPICKA AVENUE, WICHITA, KANSAS 67202
 316-262-2691 • FAX 316-262-3003

Designed By: MDK
 Drawn By: TLS

Job No.: 35-08389-002-042
 Date: July 2008

JAMES L. ARMOUR, P.E. - CITY ENGINEER
 CITY OF WICHITA PROJECT NO. 448-90426

Sheet 8 of 16