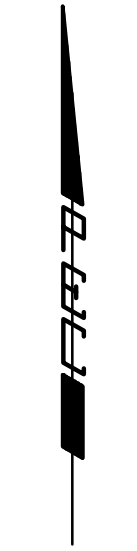


# FONTANA 4TH

AN ADDITION TO WICHITA, SEDGWICK COUNTY, KANSAS

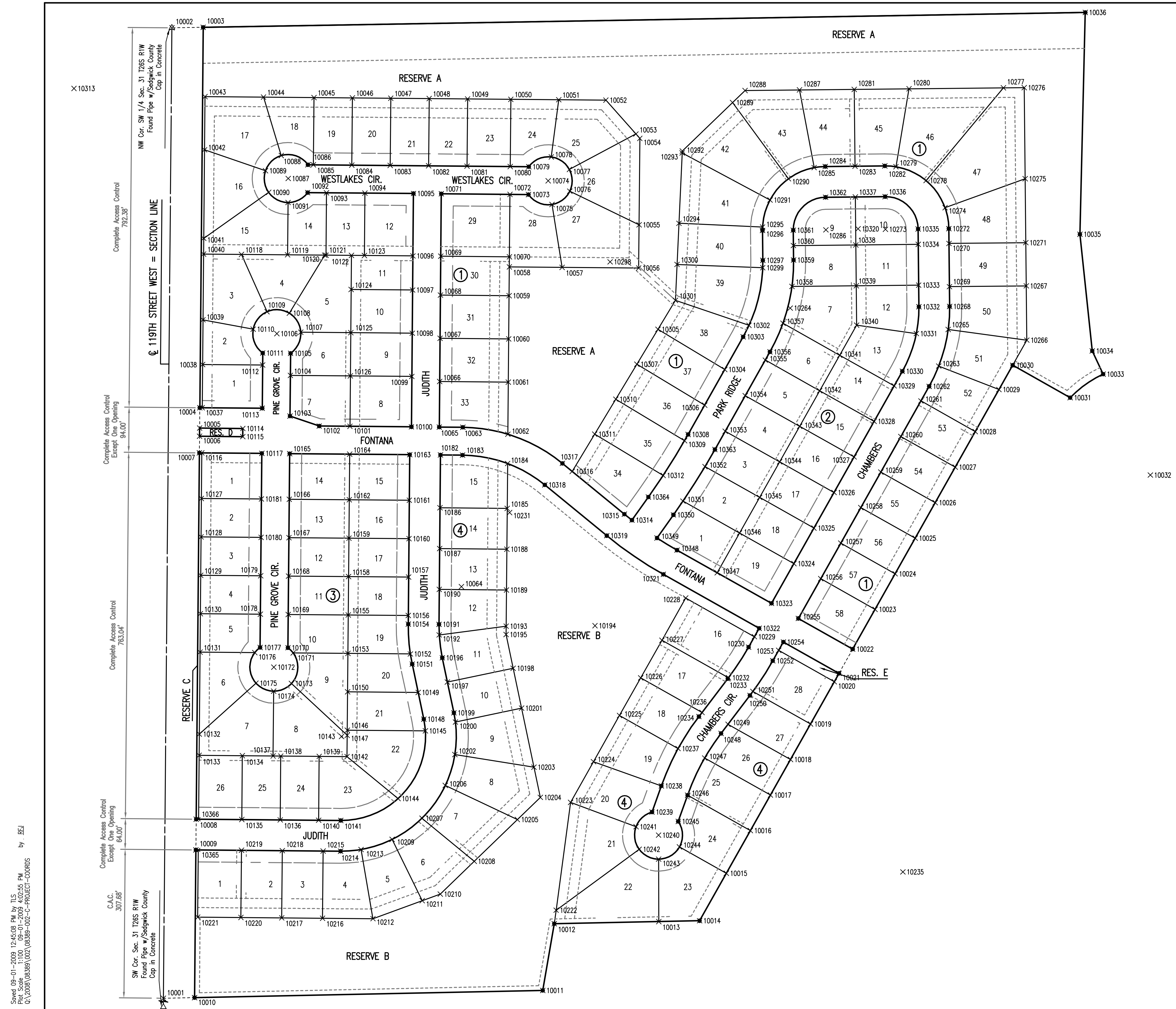
## BUBBLE MAP



SCALE: 1" = 100'

- = 1/2" REBAR W/PEC CAP UNLESS OTHERWISE NOTED
- △ = SECTION CORNER

SEE SHEET NO. 11  
FOR COORDINATE LIST



NW Cor. SW 1/4 Sec. 31 T26S R1W  
 Found Pipe w/ Sedgwick County  
 Cap in Concrete  
 Complete Access Control  
 792.38'  
 Complete Access Control  
 Except One Opening  
 94.00'  
 Complete Access Control  
 Except One Opening  
 763.04'  
 Complete Access Control  
 Except One Opening  
 64.00'  
 C.A.C.  
 307.68'  
 SW Cor. Sec. 31 T26S R1W  
 Found Pipe w/ Sedgwick County  
 Cap in Concrete

Saved 09-01-2009 12:45:08 PM by TJS  
 Plot Scale 1:100 09-01-2009 4:02:55 PM  
 Q:\2008\08389\02\08389-02-C-PROJECT-COORDS

No.	Revision	By	Date
FONTANA 4TH ADDITION - PHASE 1 WATERLINE IMPROVEMENTS <b>PLAT COORDINATES</b> JAMES L. ARMOUR, P.E. - CITY ENGINEER CITY OF WICHITA PROJECT NO. 448-90426 <b>Professional Engineering Consultants, P.A.</b> 303 S. TOPEKA • WICHITA, KANSAS 67202 316-262-2691 • FAX 316-262-3003			
Designed by	PEC	Job No. 35-08389-002-042	Sht. 10 of 16
Drawn by	PEC	Date July 2008	

