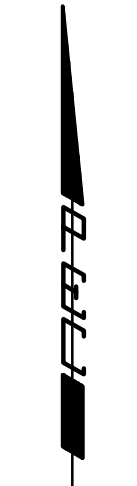


FONTANA 4TH

AN ADDITION TO WICHITA, SEDGWICK COUNTY, KANSAS

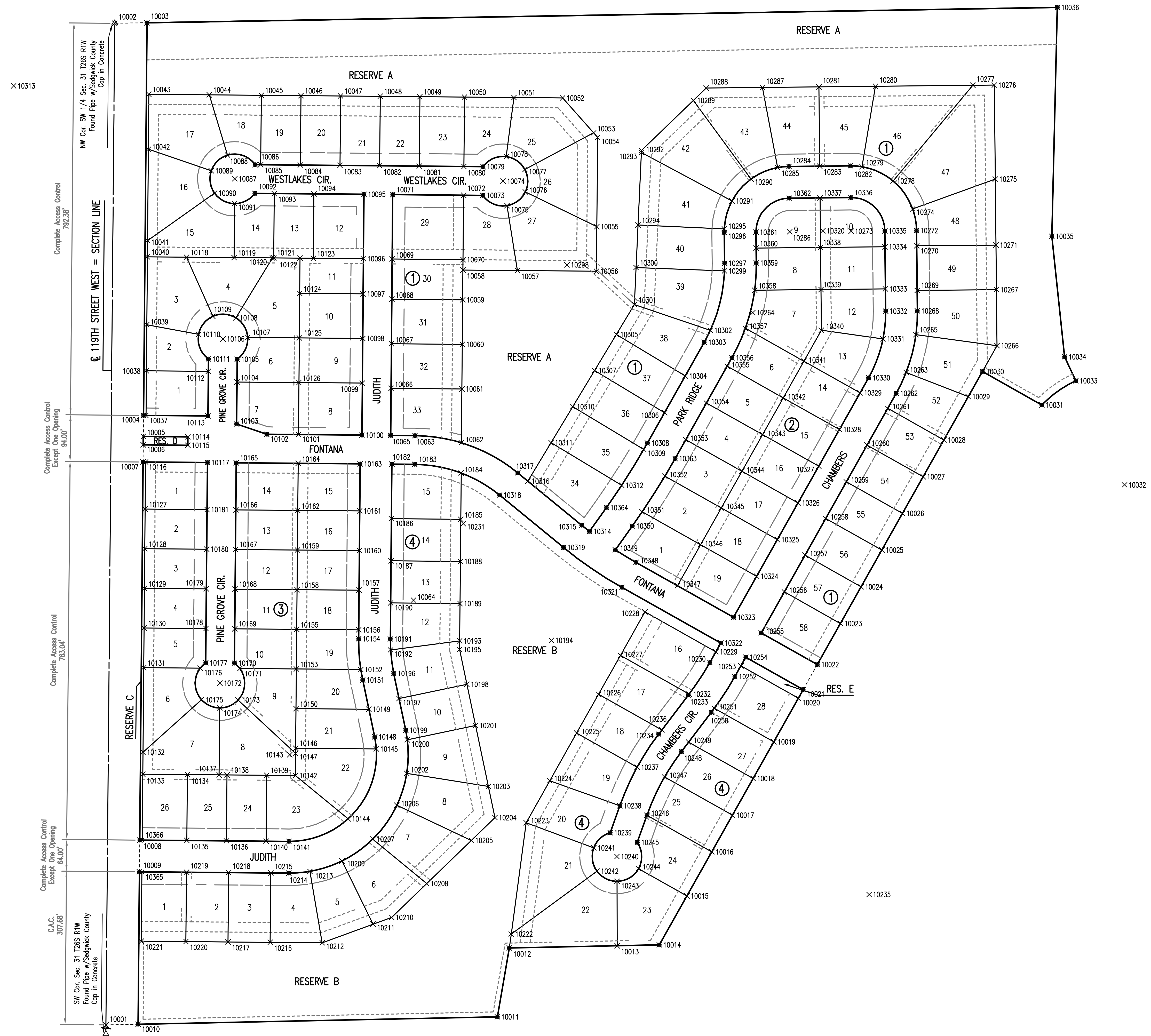
BUBBLE MAP



SCALE: 1" = 100'

- = 1/2" REBAR W/PEC CAP UNLESS OTHERWISE NOTED
- △ = SECTION CORNER

SEE SHEET NO. 5
FOR COORDINATE LIST



Saved: 09-01-2009 3:59:24 PM by: JLS
 Plot Scale: 1:100 09-01-2009 4:26:13 PM
 C:\2009\08389\001\08389-002-C-PROJECT-COORDS by: REJ

NW Cor. SW 1/4 Sec. 31 T26S R1W
 Found Pipe w/ Sedgwick County
 Cap in Concrete

Complete Access Control
 792.38'

Complete Access Control
 Except One Opening
 94.00'

Complete Access Control
 763.04'

Complete Access Control
 Except One Opening
 64.00'

C.A.C.
 307.68'

SW Cor. Sec. 31 T26S R1W
 Found Pipe w/ Sedgwick County
 Cap in Concrete

No.	Revision	By	Date
LATERAL 16, MAIN 7 OF THE NORTHWEST INTERCEPTOR SEWER PLAT COORDINATES JAMES L. ARMOUR, P.E. - CITY ENGINEER CITY OF WICHITA PROJECT NO. 468-84584 Professional Engineering Consultants, P.A. 303 S. TOPEKA • WICHITA, KANSAS 67202 316-262-2691 • FAX 316-262-3003			
Designed by	PEC	Job No. 35-08389-001-042	Sht. 4 of 18
Drawn by	PEC	Date July 2008	