

Professional
Engineering
Consultants

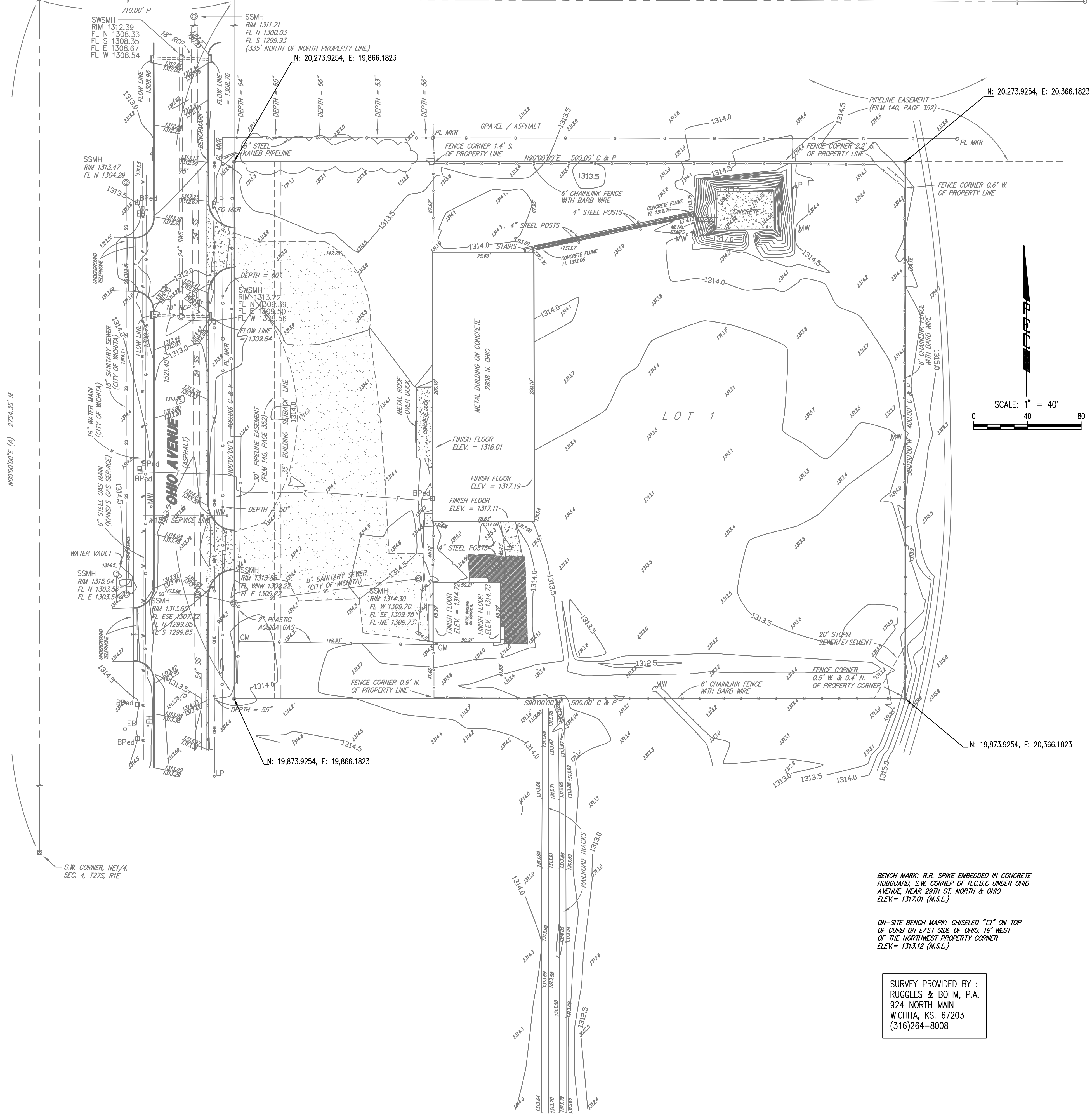
303 S. TOPEKA • WICHITA, KANSAS 67202
316.262.2691 • FAX 316.262.3003
www.pec1.com • designers@pec1.com

29TH STREET NORTH

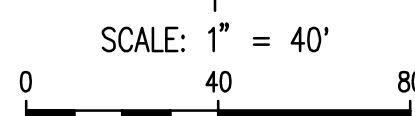
S89°51'51"E 2658.86' M

N.E. CORNER, NE1/4,
SEC. 4, T27S, R1E

N.W. CORNER, NE1/4,
SEC. 4, T27S, R1E



- (A) = ASSUMED
C = CALCULATED
M = MEASURED
P = PLATTED
- PROPERTY CORNER LEGEND**
- 3/4" IRON PIPE W/PEC CAP (FOUND)
 - ∅ 3/4" IRON PIPE IN THIMBLE (FOUND)
 - ⊗ 3/4" BAR (FOUND)
 - 1/2" REBAR W/R&B CAP (SET)



- LEGEND**
- W WATER LINE (CITY OF WICHITA)
 - G GAS LINE (KANSAS GAS SERVICE)
 - T UNDERGROUND TELEPHONE (SBC)
 - SS SANITARY SEWER (CITY OF WICHITA)
 - OHE OVERHEAD ELECTRIC (WESTAR ENERGY)
 - ° MW MONITORING WELL
 - ° GR GAS REGULATOR
 - ° PP POWER POLE
 - ° LP 2" DIAMETER LIGHT POLE BASE
 - * FH FIRE HYDRANT
 - ° FO MKR FIBER OPTIC MARKER

BENCH MARK: R.R. SPIKE EMBEDDED IN CONCRETE HUBGUARD, S.W. CORNER OF R.C.B.C UNDER OHIO AVENUE, NEAR 29TH ST. NORTH & OHIO ELEV.= 1317.01 (M.S.L.)

ON-SITE BENCH MARK: CHISELED "D" ON TOP OF CURB ON EAST SIDE OF OHIO, 19' WEST OF THE NORTHWEST PROPERTY CORNER ELEV.= 1313.12 (M.S.L.)

SURVEY PROVIDED BY :
RUGGLES & BOHM, P.A.
924 NORTH MAIN
WICHITA, KS. 67203
(316)264-8008

Saved: 09-02-2009 1:04:42 PM by: ILS
Plot Scale: 1:40 09-15-2009 8:58:45 AM
C:\2007\07172\003\RECORD DRAWINGS\PPS(SWS)\07172-C1-3 40 Survey

LUBRICANT RECYCLING FACILITY UNIVERSAL LUBRICANTS, LLC WICHITA, KS

SITE SURVEY

JOB NO. 07172-003
DATE JUNE 2008
DRAWN -
CHECKED -

C1.3
-
14