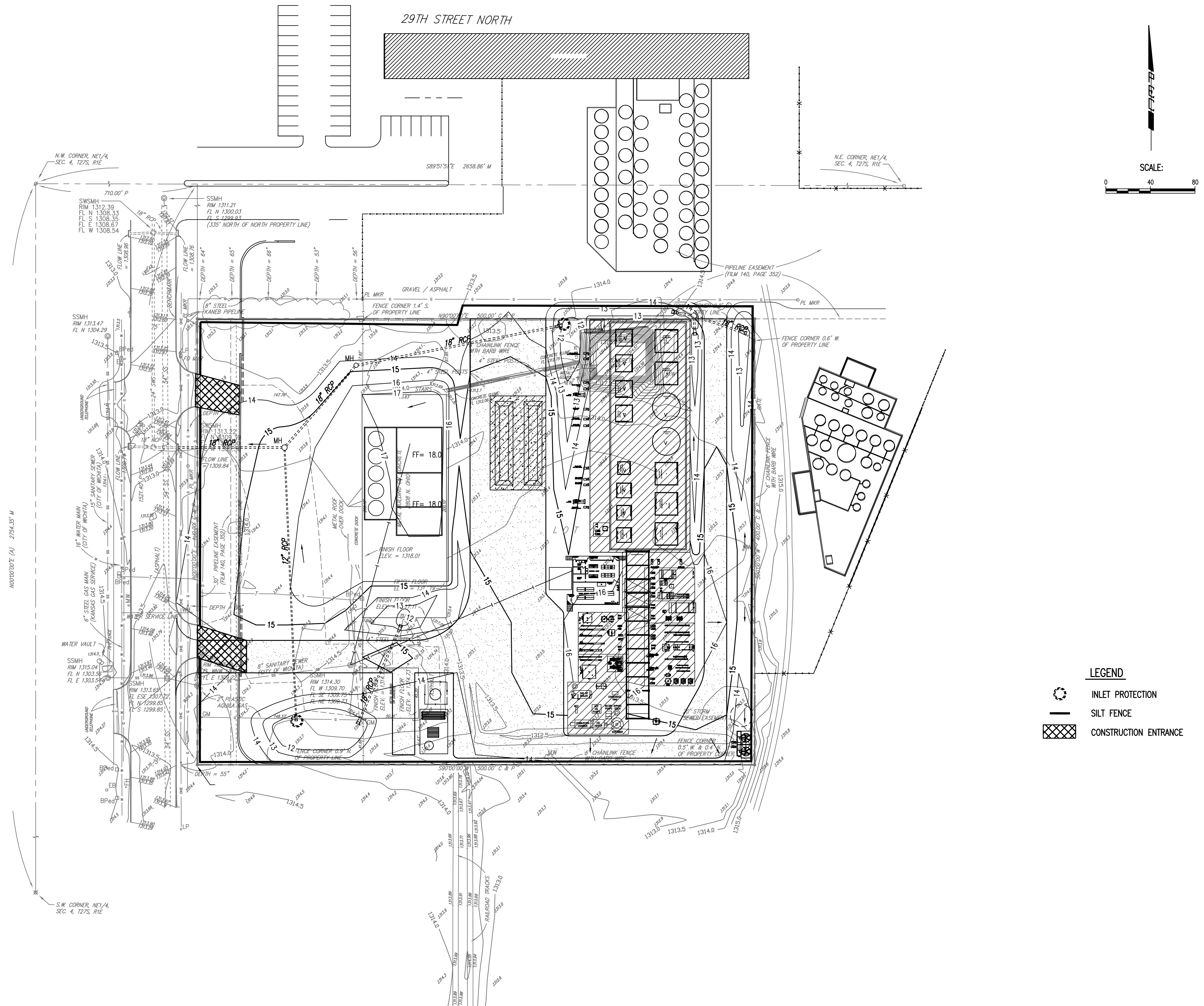




**P**rofessional  
**E**ngineering  
**C**onsultants

303 S. TOPEKA • WICHITA, KANSAS 67202  
316 262 2691 • FAX 316 262 3003  
www.pec1.com • designers@pec1.com



**LEGEND**

-  INLET PROTECTION
-  SILT FENCE
-  CONSTRUCTION ENTRANCE

**LUBRICANT RECYCLING FACILITY  
UNIVERSAL LUBRICANTS, LLC  
WICHITA, KS**

SWPP PLAN

JOB NO. 07172-003	<b>C1.6</b> - <b>14</b>
DATE JUNE 2008	
DRAWN AKB	
CHECKED RRY	

Saved: 09-02-2009 11:04:28 AM by TJS  
 Plot Scale: 1:40 09-15-2009 9:13:50 AM  
 Q:\2007\07172\003\RECORD DRAWINGS\PPS(S)\07172-C1-6 SWPP Plan