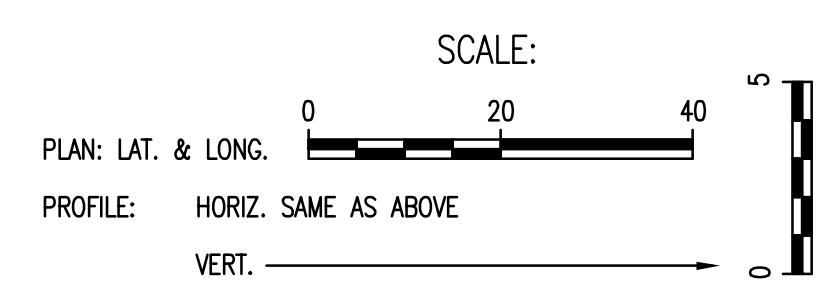
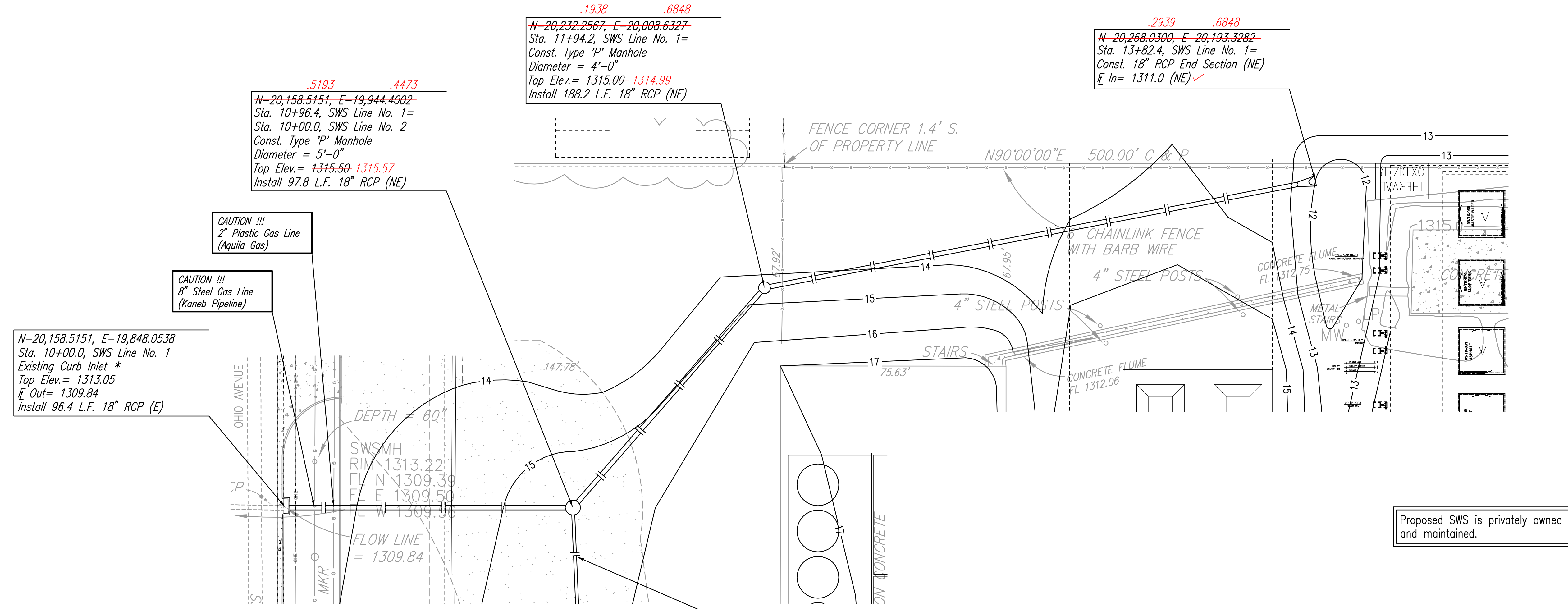


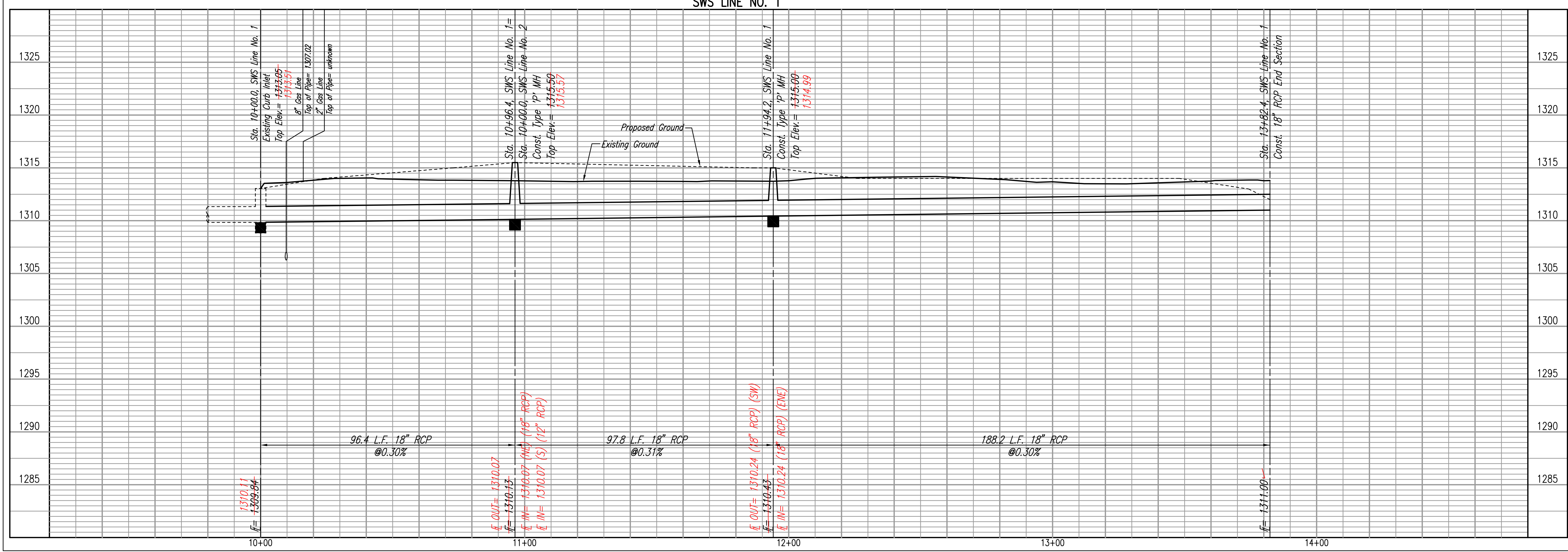
DATE	
BY	
CHECKED	
CHECKED	
PLAN	

DATE	
BY	
CHECKED	
CHECKED	
PROFILE	

Saved 09-17-2009 7:40:42 AM by TJS
 Plot Scale 1:20 09-17-2009 8:39:58 AM
 Q:\2007\07172\003\VEDCARD DRAWINGS\PPS(SWS)07172-c2-1-SWS Line 1



* PRIOR TO BEGINNING CONSTRUCTION, THE CONTRACTOR SHALL EXCAVATE THE EXISTING 18" RCP AT STORM WATER SEWER STATION 10+00.0 TO VERIFY ITS HORIZONTAL AND VERTICAL LOCATION. THE PIPE LOCATION SHALL BE REPORTED TO THE ENGINEER SO THAT ANY NECESSARY PLAN MODIFICATIONS CAN BE MADE. ANY ADDITIONAL LABOR OR MATERIALS NECESSARY TO COMPLETE THE CONNECTION SHALL BE CONSIDERED SUBSIDIARY TO THE PROJECT.



Professional Engineering Consultants, P.A. 303 S. TOPEKA • WICHITA, KANSAS 67202 316-262-2691 • FAX 316-262-3003	
PRIVATE STORM WATER SEWER LUBRICANT RECYCLING FACILITY UNIVERSAL LUBRICANTS, LLC	
SWS LINE NO. 1	
Designed By RRY	Job No. 35-07172-003-3088
Drawn By NCL	Date MAY 2008
JAMES L. ARMOUR, P.E. - CITY ENGINEER CITY OF WICHITA PRIVATE PROJECT NO. 1882 PPS (607861)	

JOB NO. 07172-003	C2.1
DATE JUNE 2008	-
DRAWN NCL	14
CHECKED RRY	

Professional Engineering Consultants
 303 S. TOPEKA • WICHITA, KANSAS 67202
 316-262-2691 • FAX 316-262-3003
 www.pec1.com • designers@pec1.com

LUBRICANT RECYCLING FACILITY
 UNIVERSAL LUBRICANTS, LLC
 WICHITA, KS

SWS LINE NO. 1
 PLAN/PROFILE