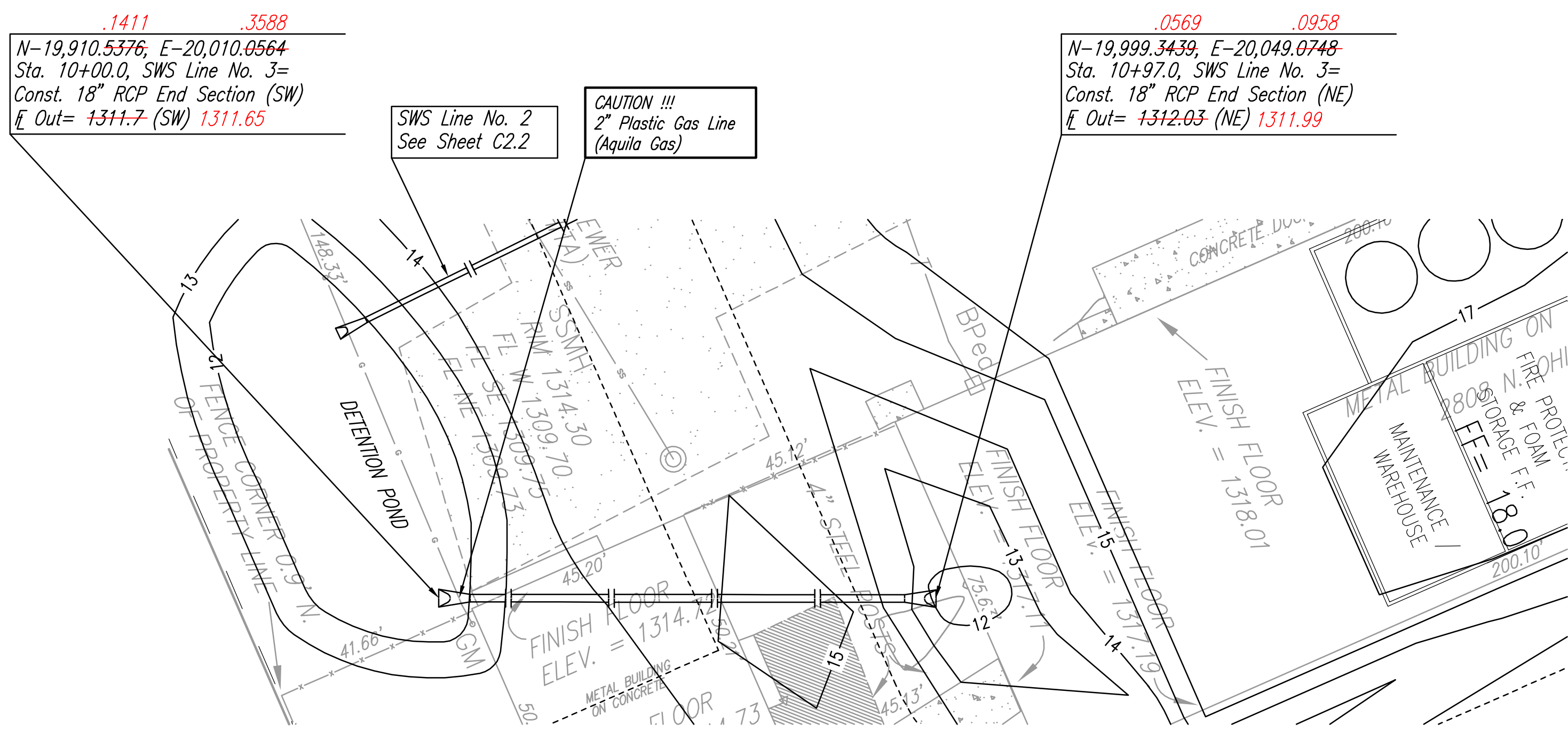
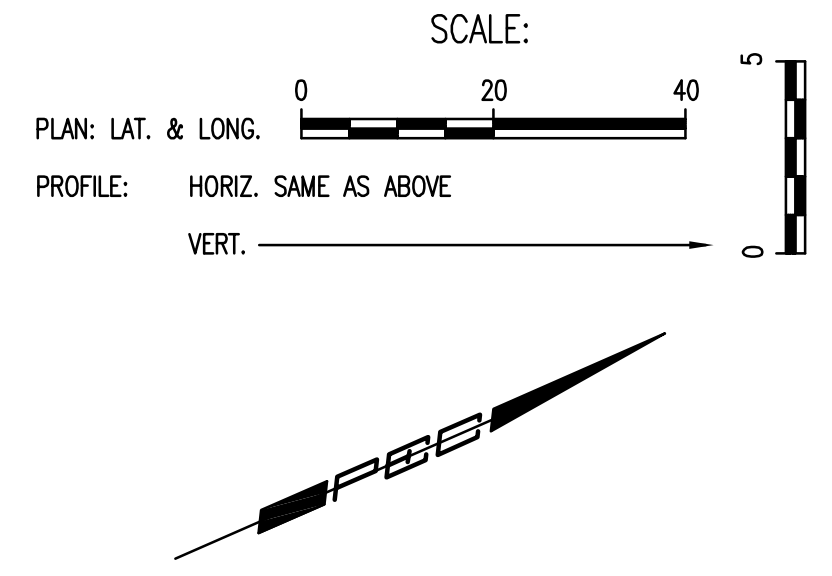


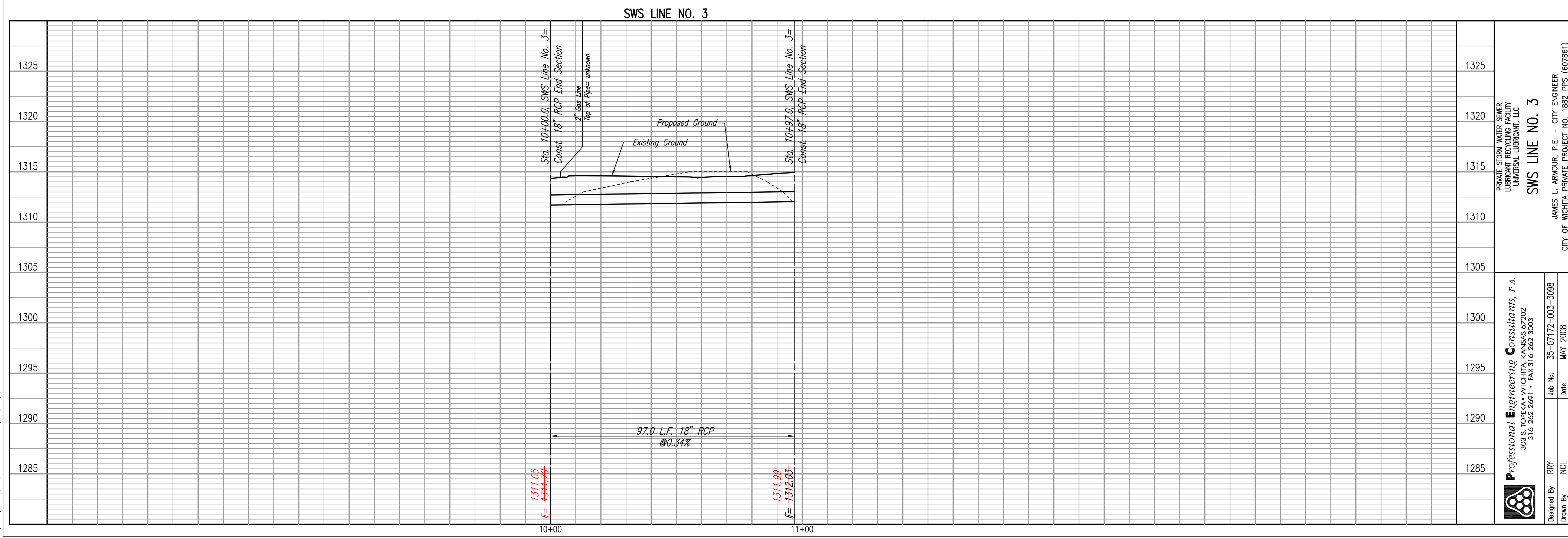
PLAN	CHECKED	BY	DATE
	CHECKED		

PROFILE	CHECKED	BY	DATE
	CHECKED		

Saved 09-15-2009 5:01:50PM by JLS  
 Plot Scale 0.2500  
 Q:\2007\07172\003\RECORD DRAWINGS\PPS(SWS)\07172-c2-3-SWS Line 3



Proposed SWS is privately owned and maintained.



 <b>Professional Engineering Consultants, P.A.</b> 303 S. TOPEKA • WICHITA, KANSAS 67202 316-262-2691 • FAX 316-262-3003	PRIVATE STORM WATER SEWER LUBRICANT RECYCLING FACILITY UNIVERSAL LUBRICANT, LLC <b>SWS LINE NO. 3</b>	JAMES L. ARMOUR, P.E. - CITY ENGINEER CITY OF WICHITA PRIVATE PROJECT NO. 1882 PPS (607861)
	Job No. 35-07172-003-3088 Date MAY 2008	Designed By RRY Drawn By NCL

**Professional Engineering Consultants**  
 303 S. TOPEKA • WICHITA, KANSAS 67202  
 316-262-2691 • FAX 316-262-3003  
 www.pec1.com • designers@pec1.com

**LUBRICANT RECYCLING FACILITY  
 UNIVERSAL LUBRICANTS, LLC  
 WICHITA, KS**

SWS LINE NO. 3  
 PLAN/PROFILE

JOB NO. 07172-003	C2.3
DATE JUNE 2008	
DRAWN NCL	
CHECKED RRY	

14