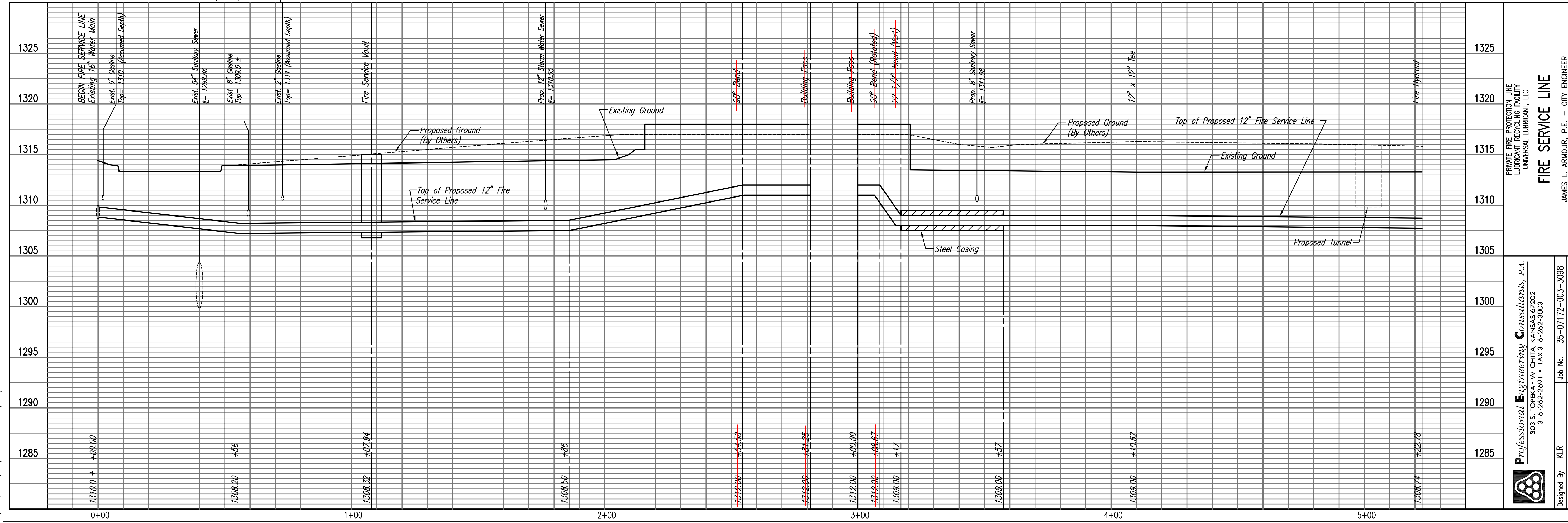
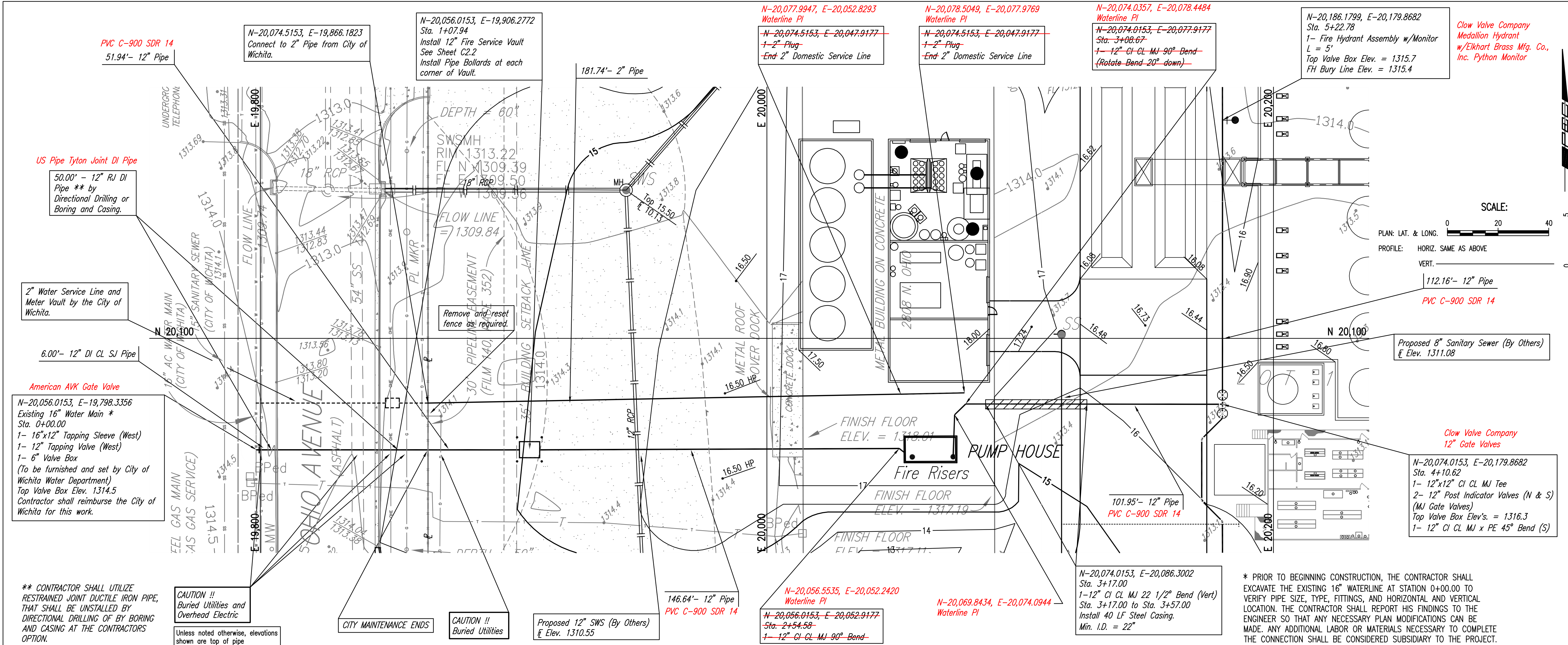


Save: 09-16-2009 3:18:10 PM by GM
 Plot Scale: 1/2" = 10' - 16-2009 3:23:55 PM by GM
 C:\2007\07172\003\RECORD DRAWINGS\PPM\07172-C1.3 Line No. 1 Plan Profile

PLAN	CHECKED	DATE
	CHECKED	

PROFILE	CHECKED	DATE
	CHECKED	



Clow Valve Company
 Medallion Hydrant
 w/Elkhart Brass Mfg. Co.,
 Inc. Python Monitor

SCALE:
 PLAN: LAT. & LONG. 0 20 40
 PROFILE: HORIZ. SAME AS ABOVE
 VERT. 0 5

* PRIOR TO BEGINNING CONSTRUCTION, THE CONTRACTOR SHALL EXCAVATE THE EXISTING 16" WATERLINE AT STATION 0+00.00 TO VERIFY PIPE SIZE, TYPE, FITTINGS, AND HORIZONTAL AND VERTICAL LOCATION. THE CONTRACTOR SHALL REPORT HIS FINDINGS TO THE ENGINEER SO THAT ANY NECESSARY PLAN MODIFICATIONS CAN BE MADE. ANY ADDITIONAL LABOR OR MATERIALS NECESSARY TO COMPLETE THE CONNECTION SHALL BE CONSIDERED SUBSIDIARY TO THE PROJECT.

Professional Engineering Consultants
 303 S. TOPEKA • WICHITA, KANSAS 67202
 316.262.2691 • FAX 316.262.3003
 www.pec1.com • designers@pec1.com

**LUBRICANT RECYCLING FACILITY
 UNIVERSAL LUBRICANTS, LLC
 WICHITA, KS**

FIRE SERVICE LINE
 PLAN/PROFILE

JOB NO. 07172-003
 DATE FEB. 2009
 DRAWN GM, BB
 CHECKED KLR

Designed By KLR
 Drawn By GM, CAE
 Job No. 35-07172-003-3088
 Date JULY 2008

Professional Engineering Consultants, P.A.
 303 S. TOPEKA • WICHITA, KANSAS 67202
 316.262.2691 • FAX 316.262.3003

JAMES L. ARMOUR, P.E. - CITY ENGINEER
 CITY OF WICHITA PRIVATE PROJECT NO. 1427 PPW (607863)

C1.3
 10