

Professional  
Engineering  
Consultants

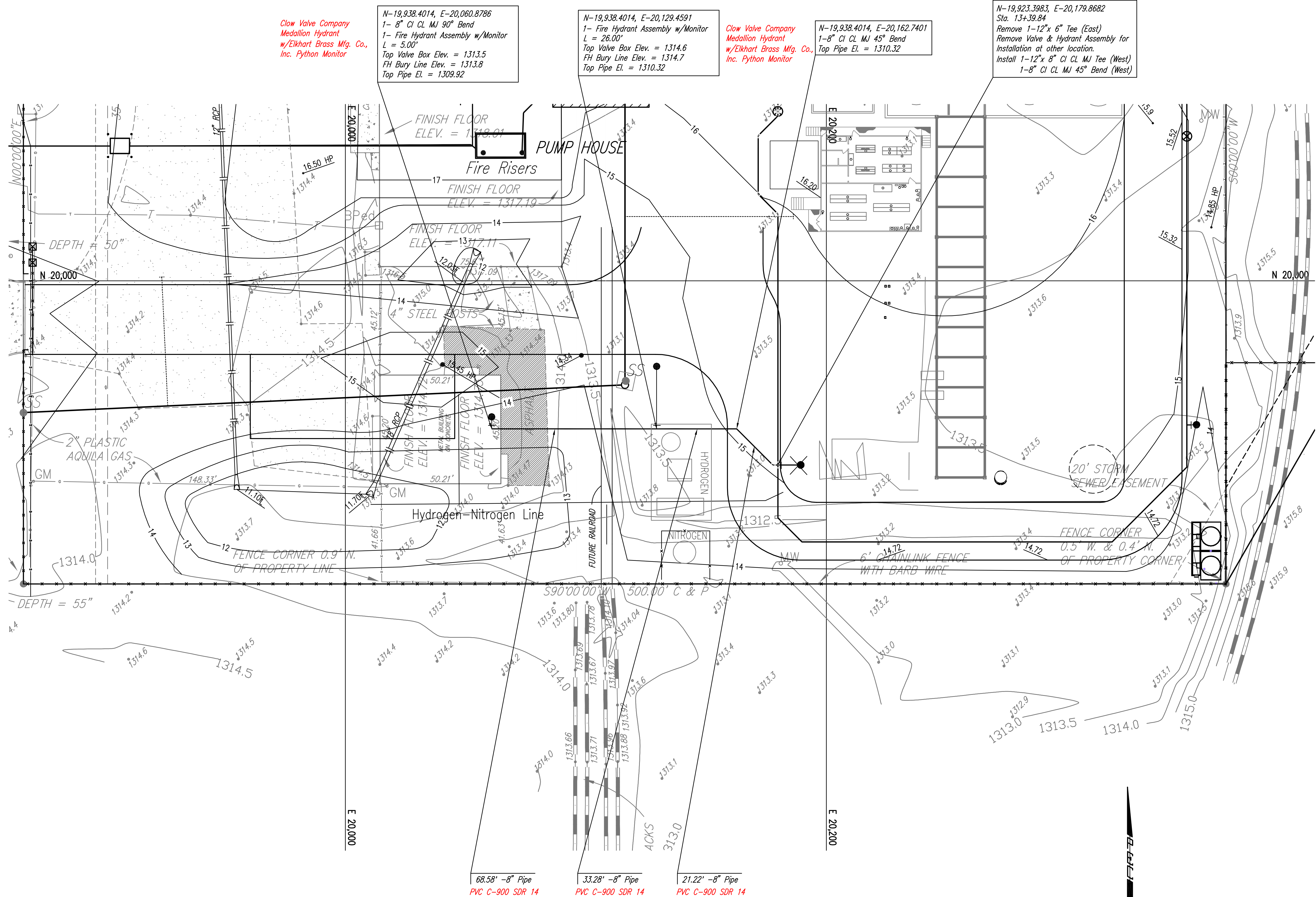
303 S. TOPEKA • WICHITA, KANSAS 67202  
316.262.2691 • FAX 316.262.3003  
www.pec1.com • designers@pec1.com

LUBRICANT RECYCLING FACILITY  
UNIVERSAL LUBRICANTS, LLC  
WICHITA, KS

FIRE SERVICE LINE

JOB NO. 07172-003  
DATE SEP. 2008  
DRAWN GM  
CHECKED KLR

C1.5  
10



Clow Valve Company  
Medallion Hydrant  
w/Elkhart Brass Mfg. Co.,  
Inc. Python Monitor

N-19,938.4014, E-20,060.8786  
1- 8" CI CL MJ 90° Bend  
1- Fire Hydrant Assembly w/Monitor  
L = 5.00'  
Top Valve Box Elev. = 1313.5  
FH Bury Line Elev. = 1313.8  
Top Pipe El. = 1309.92

N-19,938.4014, E-20,129.4591  
1- Fire Hydrant Assembly w/Monitor  
L = 26.00'  
Top Valve Box Elev. = 1314.6  
FH Bury Line Elev. = 1314.7  
Top Pipe El. = 1310.32

Clow Valve Company  
Medallion Hydrant  
w/Elkhart Brass Mfg. Co.,  
Inc. Python Monitor

N-19,938.4014, E-20,162.7401  
1- 8" CI CL MJ 45° Bend  
Top Pipe El. = 1310.32

N-19,923.3983, E-20,179.8682  
Sta. 13+39.84  
Remove 1-12"x 6" Tee (East)  
Remove Valve & Hydrant Assembly for  
Installation at other location.  
Install 1-12"x 8" CI CL MJ Tee (West)  
1- 8" CI CL MJ 45° Bend (West)

PLAN

CHECKED	DATE
CHECKED	

PROFILE

CHECKED	DATE
CHECKED	

Save: 09-16-2008 3:03:42 PM by: GJM  
Plot Scale: 1:20 09-16-2008 3:30:14 PM  
C:\2007\07172\003\RECORD DRAWINGS\PPM\07172-C1.5 Line No. 1 Plan Profile FH REVISION

PRIVATE FIRE PROTECTION LINE  
LUBRICANT RECYCLING FACILITY  
UNIVERSAL LUBRICANT, LLC

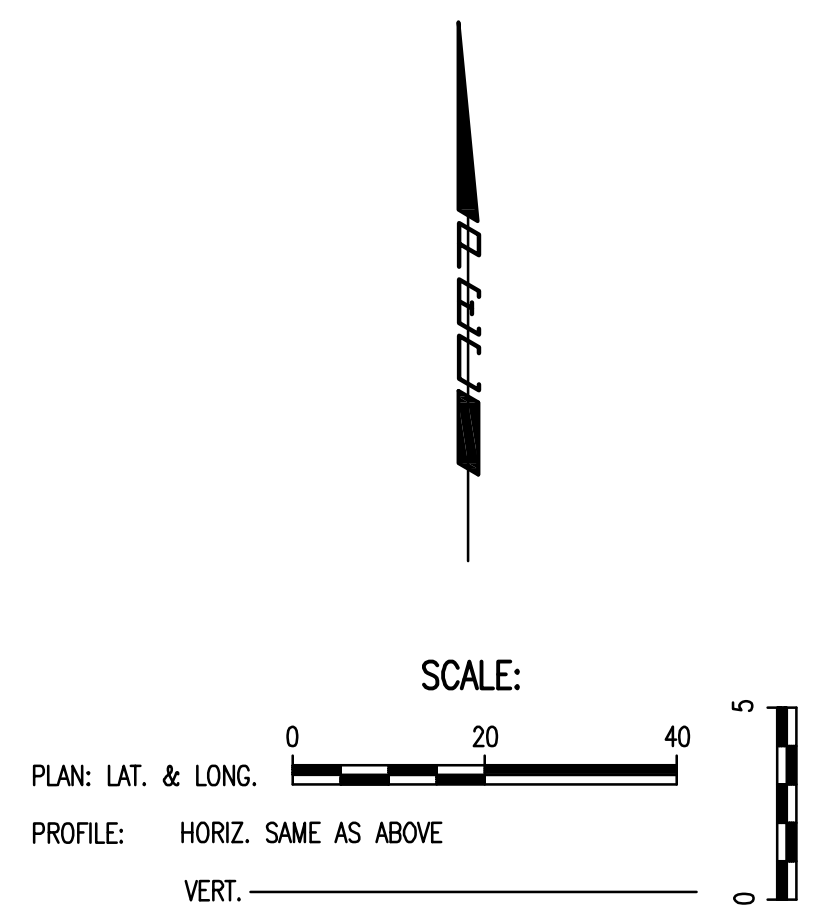
**FIRE SERVICE LINE**

JAMES L. ARMOUR, P.E. - CITY ENGINEER  
CITY OF WICHITA PRIVATE PROJECT NO. 1427 PPW (607853)

Professional Engineering Consultants, P.A.  
303 S. TOPEKA • WICHITA, KANSAS 67202  
316-262-2691 • FAX 316-262-3003

Designed By: KLR  
Drawn By: GM, CAE

Job No.: 35-07172-003-3088  
Date: NOVEMBER 2008



68.58' -8" Pipe  
PVC C-900 SDR 14

33.28' -8" Pipe  
PVC C-900 SDR 14

21.22' -8" Pipe  
PVC C-900 SDR 14