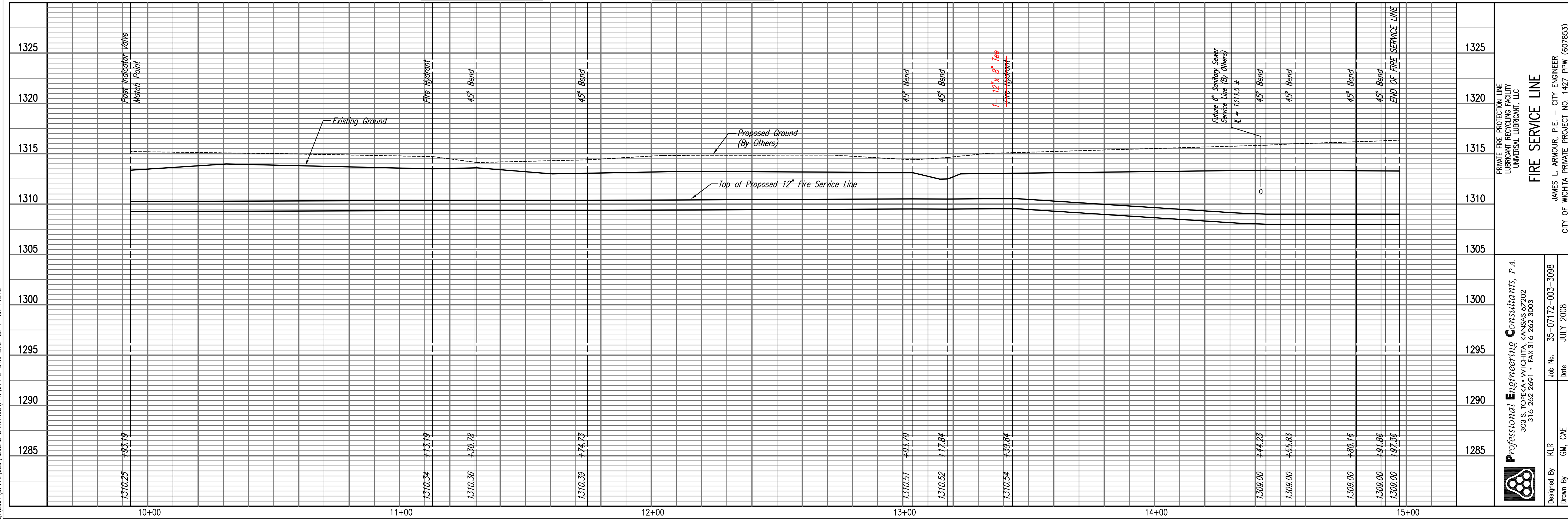
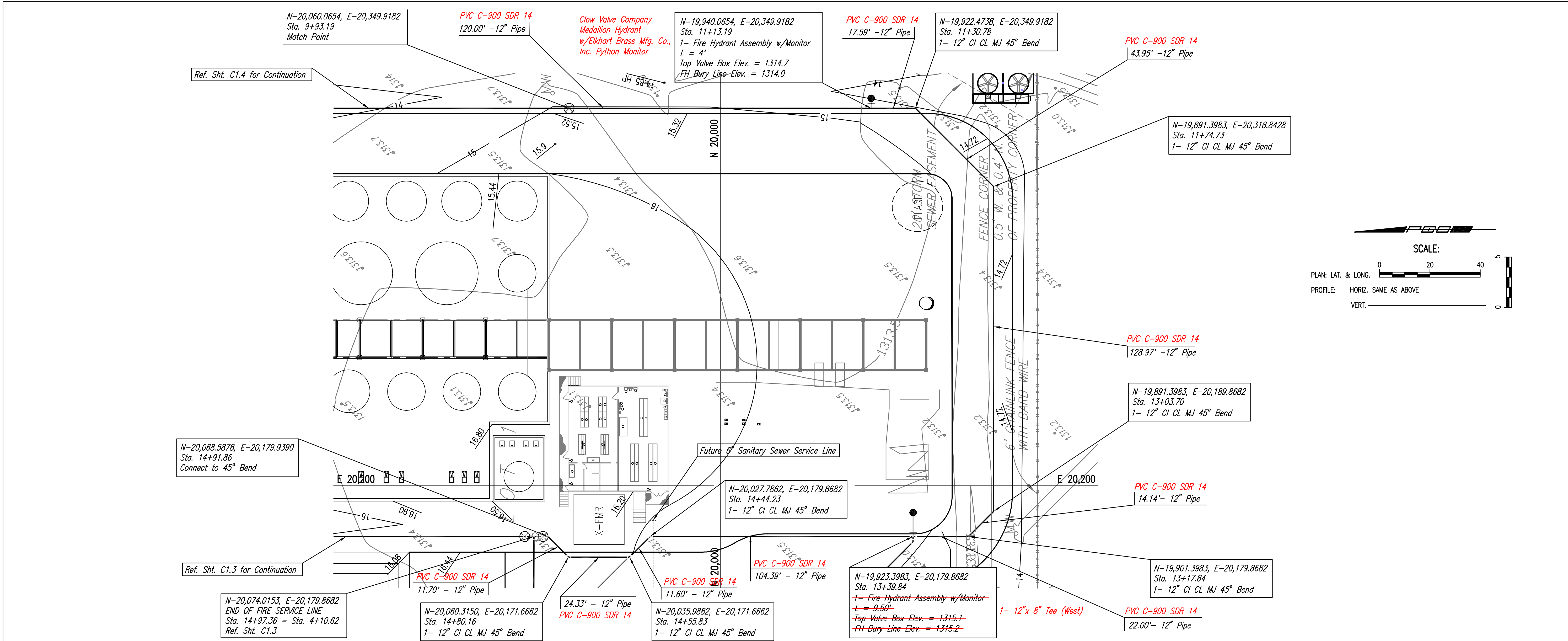


PLAN	CHECKED	CHECKED
BY		
DATE		

PROFILE	CHECKED	CHECKED
BY		
DATE		

Save: 09-16-2009 2:45:06 PM by GJM  
 Plot Scale: 1/2" = 10' - 09-16-2009 3:31:51 PM by GJM  
 Q:\2007\07172\003\RECORD DRAWINGS\PPM\07172-C1.5 Line No. 1 Plan Profile



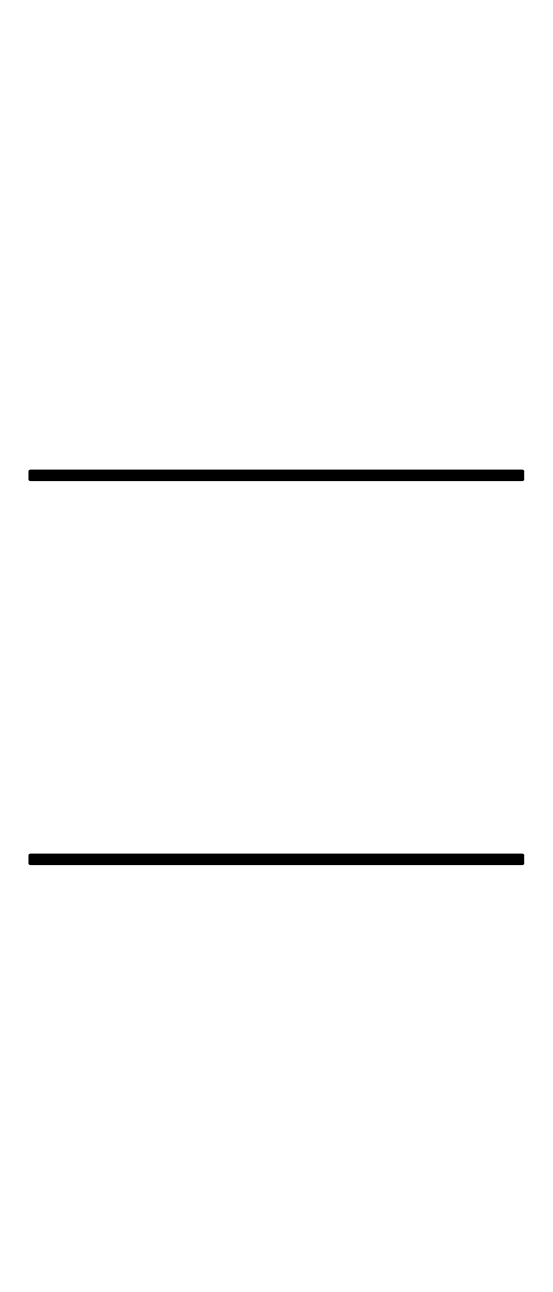
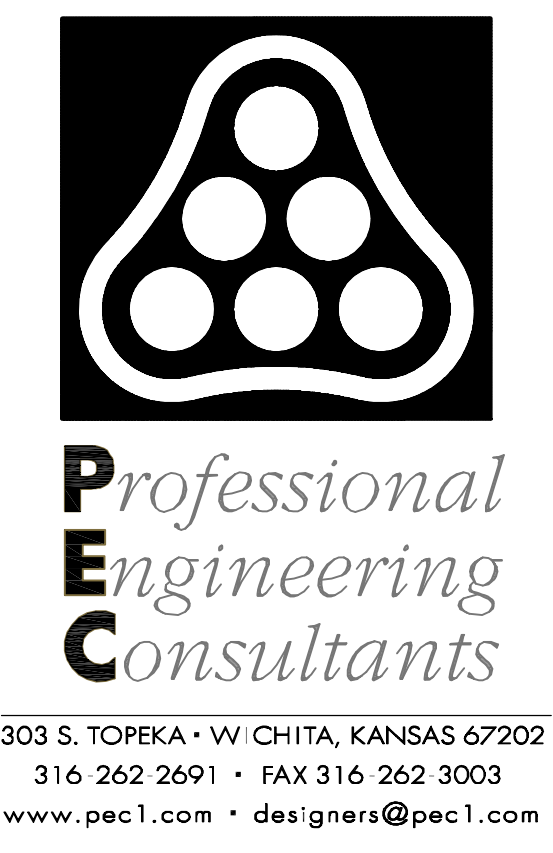
**Professional Engineering Consultants, P.A.**  
 303 S. TOPEKA • WICHITA, KANSAS 67202  
 316-262-2691 • FAX 316-262-3003

**Private Fire Protection Line  
 Lubricant Recycling Facility  
 Universal Lubricant, LLC**

**FIRE SERVICE LINE**

JAMES L. ARMOUR, P.E. - CITY ENGINEER  
 CITY OF WICHITA PRIVATE PROJECT NO. 1427 PPW (607853)

Designed By: KLR  
 Drawn By: GM, CAE  
 Job No.: 35-07172-003-3088  
 Date: JULY 2008



**LUBRICANT RECYCLING FACILITY  
 UNIVERSAL LUBRICANTS, LLC  
 WICHITA, KS**

FIRE SERVICE LINE  
 PLAN/PROFILE

JOB NO. 07172-003  
 DATE FEB. 2009  
 DRAWN GM  
 CHECKED KLR

**C1.5  
 10**