

# STREET IMPROVEMENTS

## TO SERVE LOT 1, BLOCK 1, FLIGHT SAFETY 2ND ADDITION

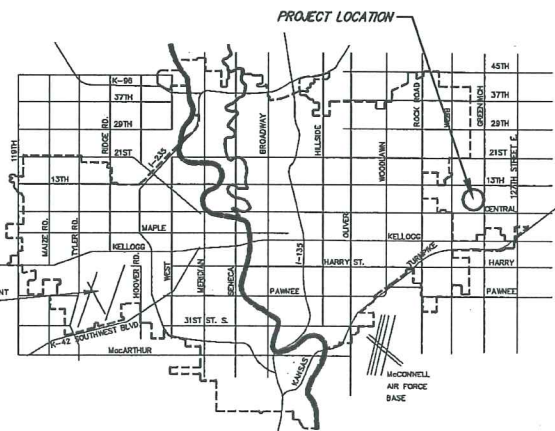
### PRIVATE PROJECT NO. 194 PPP (607879)

### GENERAL NOTES

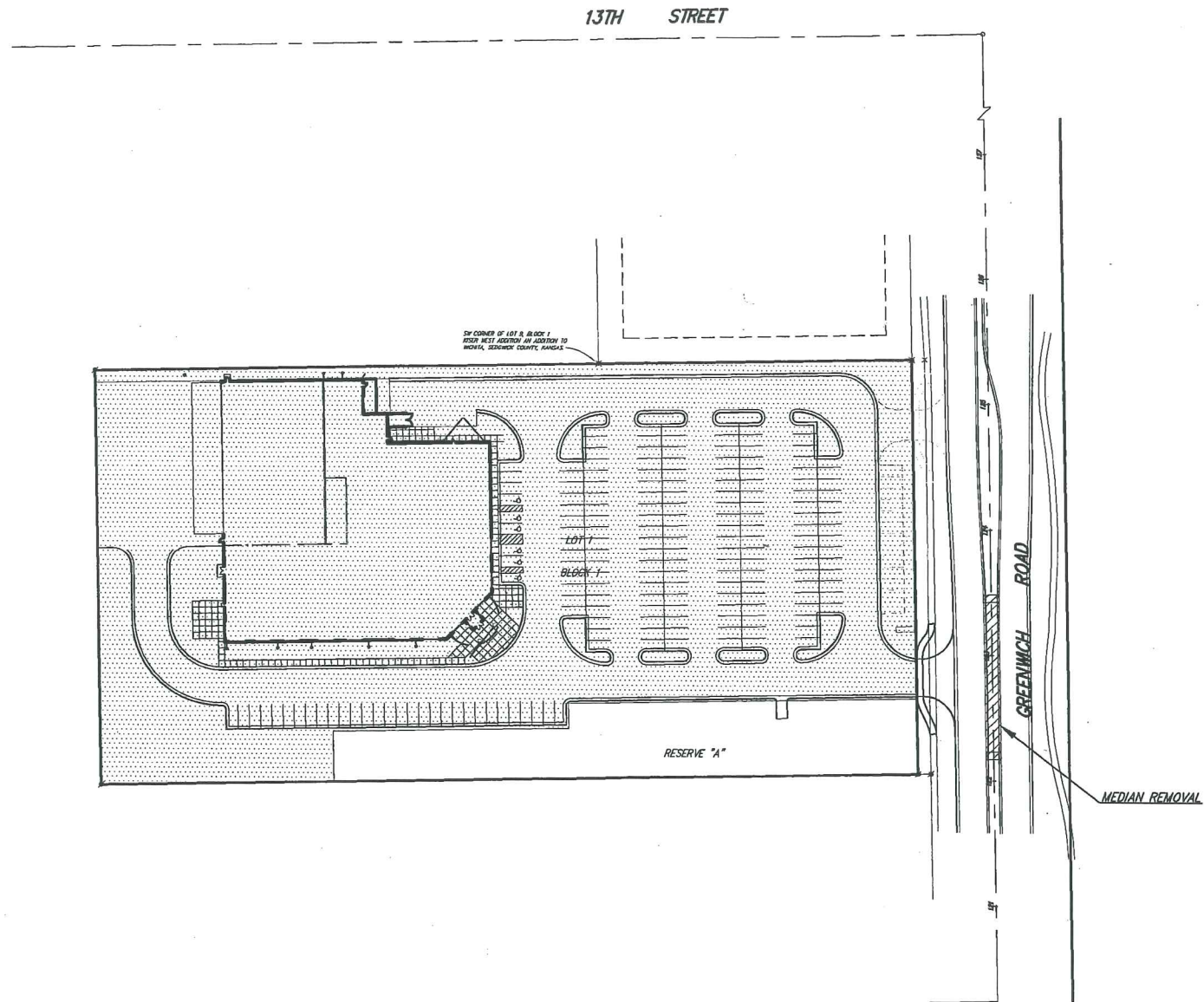
- Existing utilities and their location, as shown on the plans, represent the best information obtainable for design. The Contractor will be required to work around existing utilities within the right-of-way.
- A saw cut of the full depth of existing surface courses or pavement thickness shall be provided at locations where proposed construction abuts an existing surface course or pavement for which partial removal of that surface or pavement is required, except when such saw cuts are within three (3) feet of an existing joint the limits of removal shall be extended to the existing joint.
- Rubble from the removal of miscellaneous structures and excess excavation which is to be wasted shall be disposed of on sites to be provided by the Contractor. These sites shall be approved by the Engineer as to suitability, appearance and site location. Locations that, in the opinion of the Engineer, will leave an unsightly appearance will not be approved.
- All disposal sites must be approved by the Kansas Department of Health and Environment. Material either stockpiled or disposed of in a flood plain would require a Kansas State Board of Agriculture permit. Any material dumped in waters of the United States or wetlands is subject to U.S. Corps permitting regulations. Any material buried or stockpiled beyond approved of Engineers construction limits would require additional archeological investigations unless buried in a previously approved borrow location.
- Contractor will be required to provide a minimum advance notice of seventy-two (72) hours to utility companies prior to starting any excavation as follows:
 

Kansas One-Call	687-2470 or 811
-----------------	-----------------
- The Contractor must notify the following in case of an emergency:
 

Cox Communications	262-0661
Kansas Gas Service	383-8600
Westar	383-8600
AT&T	1-800-286-8313
City of Wichita Water Utility	262-6000
- This project is to be constructed in accordance with City of Wichita Standard Specifications for the Construction of City Projects, and Policy on Construction of Public Works Improvements by Private Contract.
- No work shall begin on this project before bonds are submitted to the City of Wichita, and the project inspector has been notified.
- The Contractor shall submit a traffic control plan, to be approved by the Engineer prior to any work.



VICINITY MAP



### BENCH MARK

BENCH MARK: CITY OF WICHITA BENCH MARK AT GREENWICH AND 9TH STREET NORTH 47.60 FEET EAST OF THE CENTERLINE OF GREENWICH AND 4.00 FEET SOUTH OF THE 1/2 SECTION LINE ELEVATION = 1389.18 (NGVD29)

ON-SITE BENCH MARK: CHISELED SQUARE ON THE TOP OF CURB ON THE WEST SIDE OF GREENWICH, 2.145 FEET SOUTH OF THE CENTERLINE OF 13TH STREET NORTH ELEVATION = 1391.88 (NGVD29)

### INDEX OF SHEETS

- C3-1. TITLE SHEET
- C3-2. PAVING PLAN
- C3-3. STANDARD DRIVE ENTRANCE DETAIL
- C2-9. HORIZONTAL & VERTICAL CONTROL MAP



SCALE: 1" = 60'

APPROVED AS NOTED  
BY CITY ENGINEER OF WICHITA

Sanitary Sewers \_\_\_\_\_

Storm Sewers \_\_\_\_\_

Driveway Approaches \_\_\_\_\_

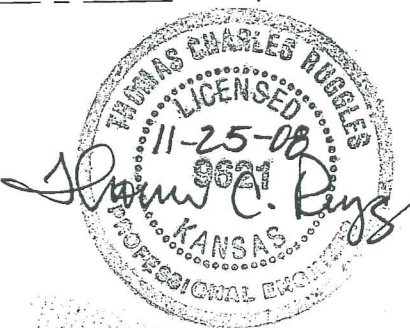
Water Mains \_\_\_\_\_

Paving *Julianne Kellman 11-25-08*

NOTE TO CONTRACTORS

Inspection and testing for this project are to be provided by a Licensed Consulting Engineering Firm under contract with the Owner/Developer. Said inspection to be in accordance with the City of Wichita standard construction engineering practices and certified by a Licensed Professional Engineer. No work shall be performed in dedicated easements or public right-of-way by the Contractor without such inspection, nor shall any work be commenced without written authorization by the City Engineer.

CONTRACTOR: APAC  
INSPECTOR: ANTHONY YOUNG, RUGGLES & BOHM P.A.  
PDF BY: MATT PEREZ, RUGGLES & BOHM P.A.



**Ruggles & Bohm, P.A.**  
Engineering, Surveying, Land Planning  
924 North Main (316) 264-8008  
Wichita, Kansas 67203 (316) 264-4621 fax  
www.rbkansas.com E-mail: info@rbkansas.com

IMPROVEMENT DISTRICT  
**CITY OF WICHITA, KANSAS**  
**JAMES L. ARMOUR, P.E. - CITY ENGINEER**

AS-BUILTS 9-24-09

**CONSULTING ENGINEERS**  
RUGGLES & BOHM, P.A.  
924 NORTH MAIN  
WICHITA, KANSAS 67203  
TEL: (316) 264-8008  
FAX: (316) 264-4621  
WWW.RBKANSAS.COM

**CONTRACTOR**  
**ARCO**  
1790 SOUTH BREITWOOD  
SUITE 200  
ST. LOUIS, MISSOURI 63144  
(314) 965-5015 (F) 314-965-0714

**ARCHITECT**  
**FLIGHT SAFETY**  
1790 SOUTH BREITWOOD  
SUITE 200  
ST. LOUIS, MISSOURI 63144  
(314) 965-5015 (F) 314-965-0714

PROPOSED MAINTENANCE FACILITY FOR:  
**FlightSafety**  
WICHITA, KANSAS

STREET COVER SHEET

JOB NO: SJ0811  
DRAWN BY: MLP  
ISSUE DATE: DATE 11-25-08

REVISIONS  $\Delta$

1	REV-1
2	REV-2
3	REV-3
4	REV-4
5	REV-5

SHEET NUMBER  
C3-1