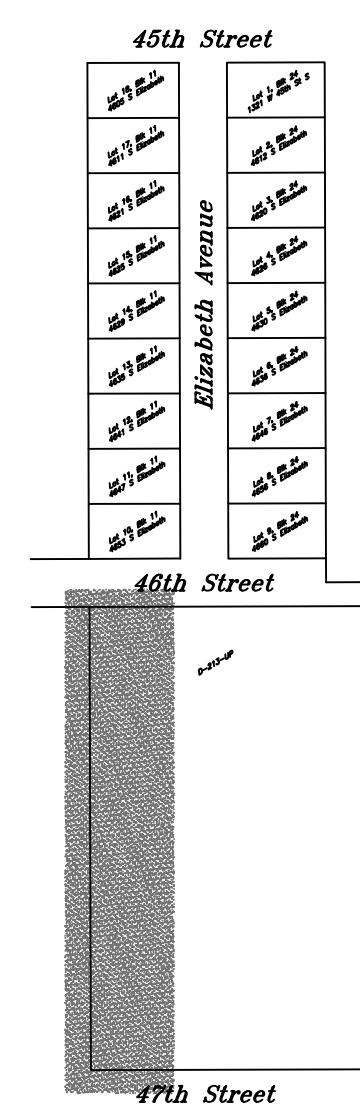
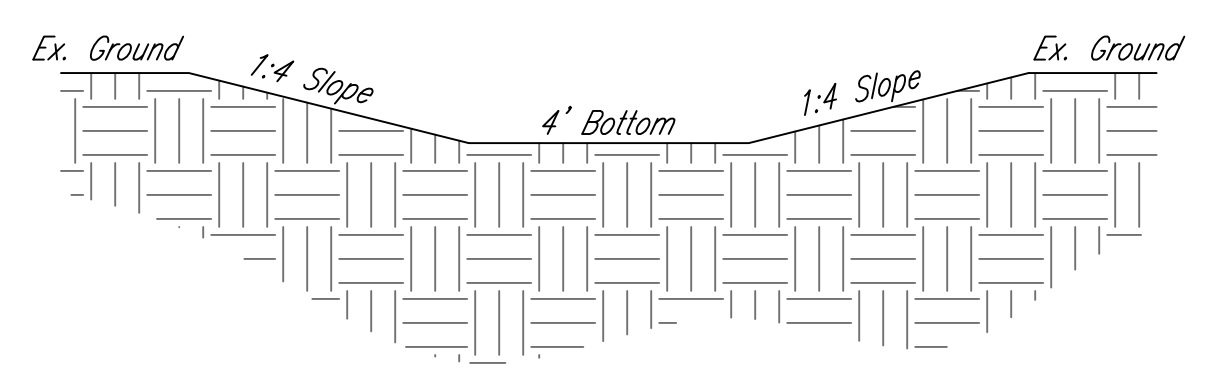


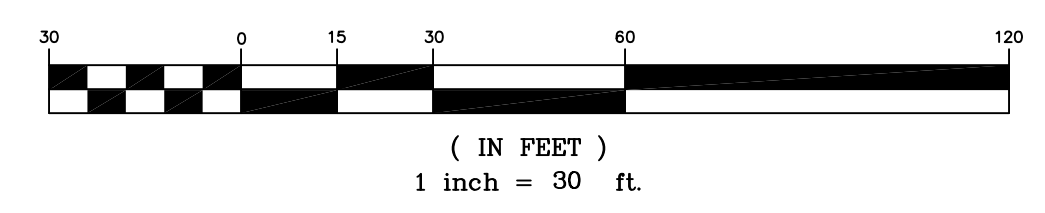
Ditch Profile:
not to scale



BENCHMARK: COW

City Disc on the Northeast Corner of Clarence and 45th Street South, approximately 8 feet Northeast of fire hydrant.

Elev. = 85.10 (City Datum)



Elizabeth Avenue Paving Ditch Wichita, Kansas				
kemiller engineering		PROJECT NUMBER 472-84753		
		KEM NO. 08168	FILE plan	DATE 05/07/09
516 S. Market, Wichita, KS 67202		316/264-0242		
		DESIGN KM	DRAWN NS	REVISED