

GENERAL NOTES

- Contractor will be required to provide a minimum advance notice of seventy-two (72) hours to utility companies prior to starting any excavation as follows:

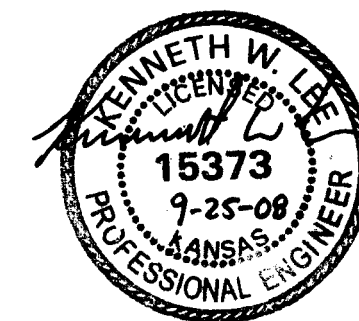
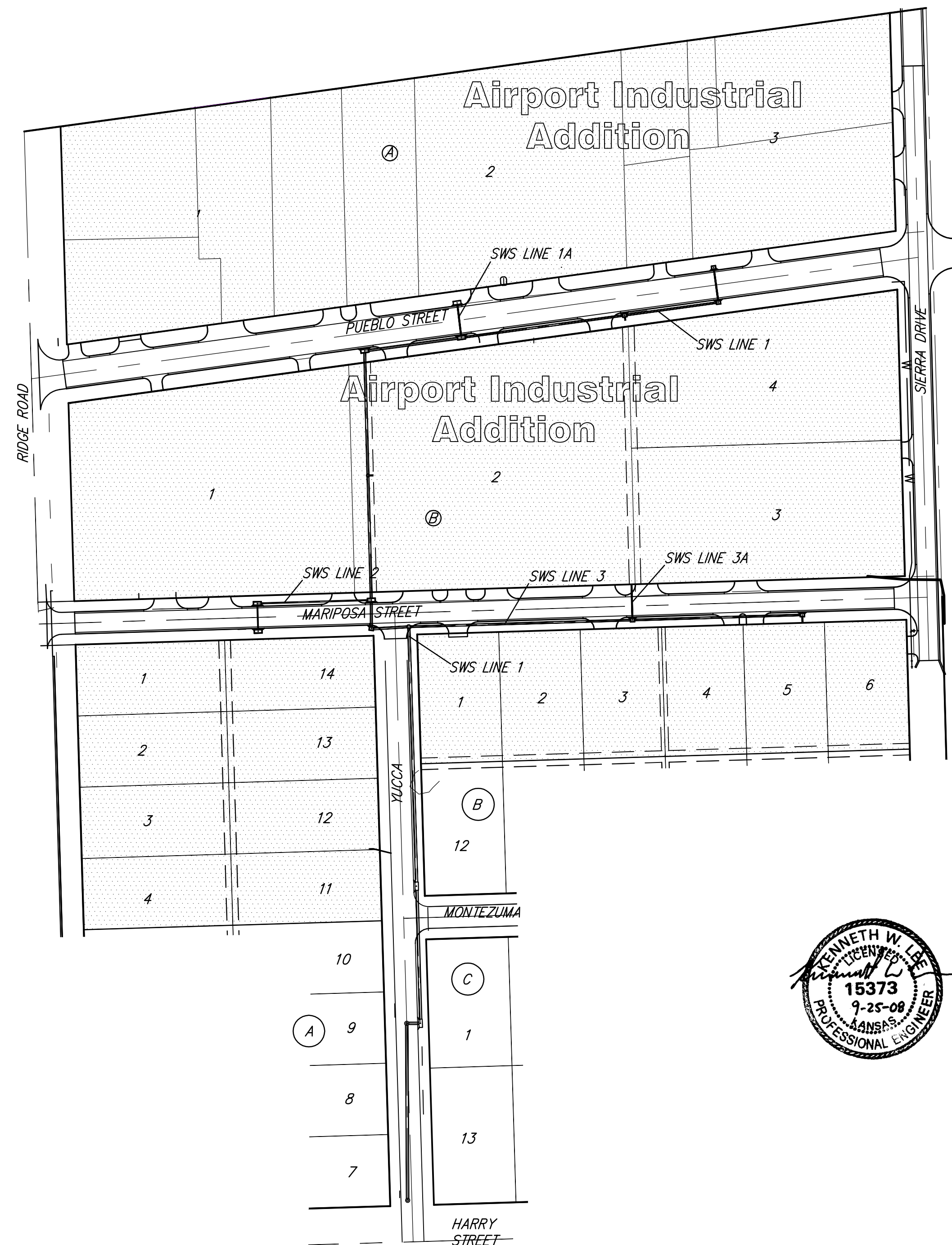
Kansas One-Call	811
Cox Communications	260-7204
Kansas Gas Service	888-482-4950
Westar	383-8600
AT&T	1-800-286-8313
City of Wichita Public Works	262-6000

- A saw cut of at least one-half the depth of existing surface courses or one-fourth the depth of existing total pavement thickness shall be provided at locations where proposed construction abuts an existing surface course or pavement for which partial removal of that surface or pavement is required, except when such saw cuts are within three (3) feet of an existing joint the limits of removal shall be extended to the existing joint. Such saw cuts will not be paid for directly and this cost shall be considered as subsidiary to the removal of the surface or pavement.
- Rubble from the removal of miscellaneous structures and excess excavation which is to be wasted shall be disposed of on sites to be provided by the Contractor. These sites shall be approved by the Engineer as to suitability, appearance and site location. Locations that, in the opinion of the Engineer, will leave an unsightly appearance will not be approved.
- All disposal sites must be approved by the Kansas Department of Health and Environment. Material either stockpiled or disposed of in a flood plain would require a Kansas State Board of Agriculture permit. Any material dumped in waters of the United States or wetlands is subject to U.S. Corps permitting regulations. Any material buried or stockpiled beyond approved of Engineers construction limits would require additional archeological investigations unless buried in a previously approved borrow location.
- Limits of earthwork shall match existing ground elevations at the right-of-way line unless otherwise noted on the plans with a new finished grade elevation. When a new finished grade elevation is shown, the earthwork shall extend one foot beyond the right-of-way line and then sloped up or down using permissible slopes to match the existing ground surface.
- The Contractor shall be responsible for preserving property irons. The Contractor will be required to re-establish any property irons which are damaged or destroyed by his construction operations. Such irons shall be re-established by a licensed land surveyor in accordance with state laws.
- The Contractor shall give all property owners and/or tenants of developed property directly abutting the construction of this project a minimum of ten (10) days advance notice prior to start of construction.
- The Contractor shall adjust Water Valve Boxes and Fire Hydrants as directed by the Engineer at the price bid for said adjustments. The Water Department shall field locate water valves one time during construction when requested by the Contractor. It shall be the Contractor's responsibility to preserve such field locations during the construction process. Water valves, water valve boxes or fire hydrants damaged during construction shall be repaired by the Contractor at his own expense.
- Underground utility service lines and overhead utility pole lines are to be adjusted as necessary by others prior to construction unless the plans specifically call for their adjustment by the Contractor or unless the plans specifically identify a utility to be adjusted by its owner during construction. Existing utilities and their location, as shown on the plans, represent the best information obtainable for design. Location information has been obtained from the various utility companies and is either from company record drawings or company-provided field locations. The Contractor will be required to work around existing utilities within the right-of-way which do not conflict with proposed construction.
- The Contractor shall notify pipeline companies at least 24 hours in advance of any work being performed across and/or adjacent to pipelines.
- Trees and shrubs in public right-of-way which are in direct conflict with proposed new construction shall be removed by the Contractor with the Engineer's approval. Trees and shrubs which are not in direct conflict with proposed new construction shall be saved and protected from damage.
- The Contractor shall seed, fertilize and mulch all disturbed areas per City specifications upon completion of construction.

STREET IMPROVEMENTS

Pueblo Street from the east line of Ridge Road in Airport Industrial Addition; Mariposa Street from the east line of Ridge Road in Airport Industrial Addition; Sierra Drive from the south line of Mariposa in Airport Industrial Addition.

AIRPORT INDUSTRIAL ADDITION PROJECT NO. 472-84646 OCA # 766198



BENCH MARK

BENCHMARK #1:
Chiseled 'X' on the South rim of Manhole, 29.5' East of the centerline of Ridge Road and 24' North of the centerline of Mariposa. Elev. = 1319.93 NGVD 1929

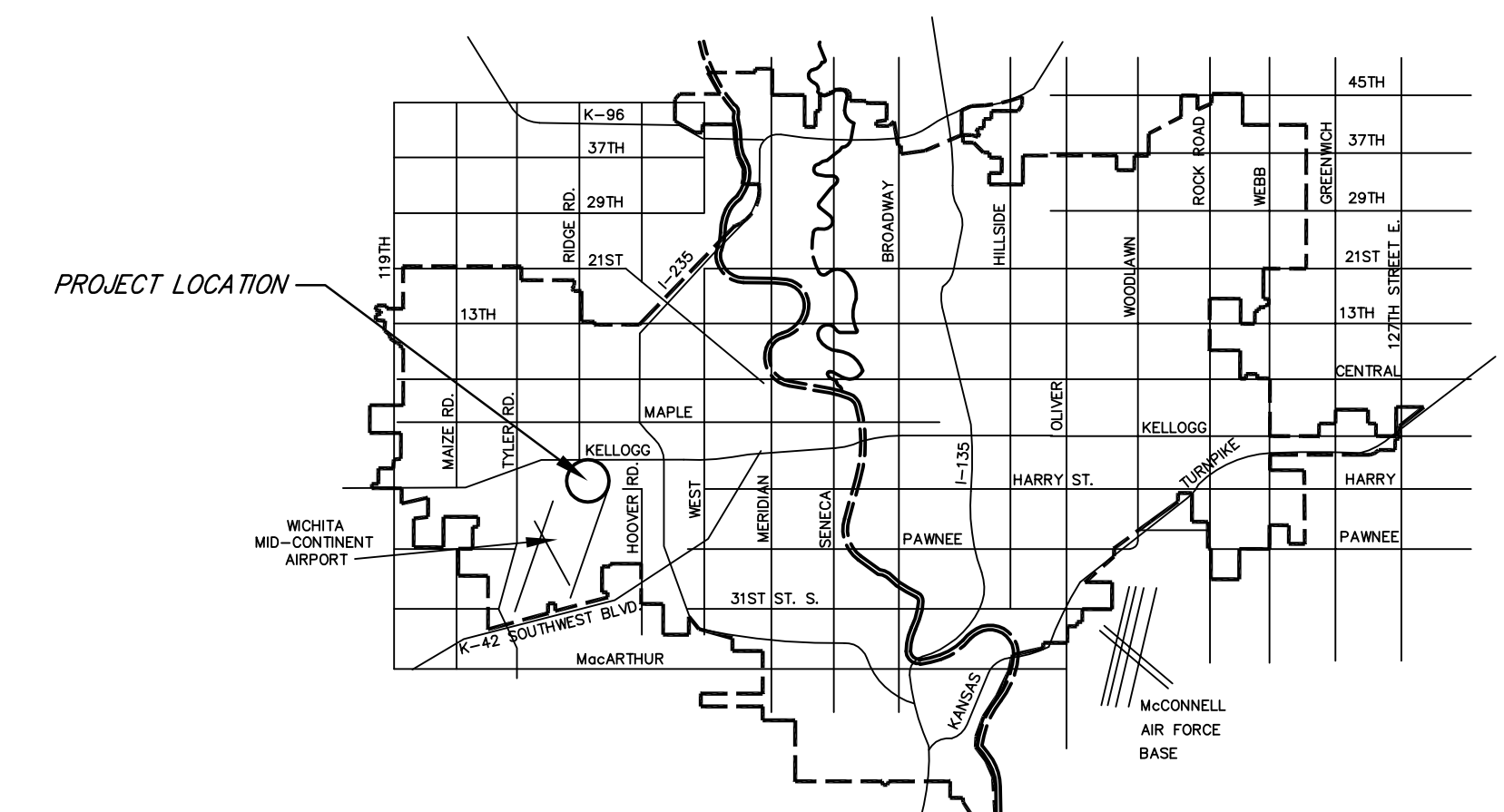
BENCHMARK #2:
'□' on East return, Southeast corner of Pueblo and Airport Road. Elev. = 1318.83 NGVD 1929

INDEX OF SHEETS

- TITLE SHEET
- TYPICAL 31' P.V.M.T. SECTION
- TYPICAL 41' P.V.M.T. SECTION
- DRIVEWAY DETAIL
- 6. PUEBLO
- 8. MARIPOSA
- 10. SIERRA
- 11A.-17. SWS PLAN & PROFILE
18. CROSS STREET VALLEY GUTTER DETAIL
19. TYPE 1A INLET DETAIL (SINGLE)
20. TYPE 1A INLET DETAIL (DOUBLE)
21. TYPE P MANHOLE DETAIL
22. EROSION PLAN
23. DEMO PLAN
24. YUCCA AND MONTEZUMA FUTURE GRADES
- 25-32. CROSS SECTIONS
33. VOLUME TABLE
- 33A. VALLEY GUTTER DETAIL
- 33B. SPECIAL TYPE 2F INLET

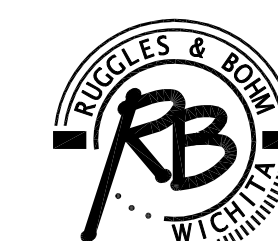


Scale: 1" = 120'



VICINITY MAP

**IMPROVEMENT DISTRICT
CITY OF WICHITA, KANSAS
JAMES L. ARMOUR, P.E. - CITY ENGINEER**



Ruggles & Bohm, P.A.
Engineering, Surveying, Land Planning
924 North Main (316) 264-8008
Wichita, Kansas 67203 (316) 264-4621 fax
www.rbkansas.com E-mail: info@rbkansas.com