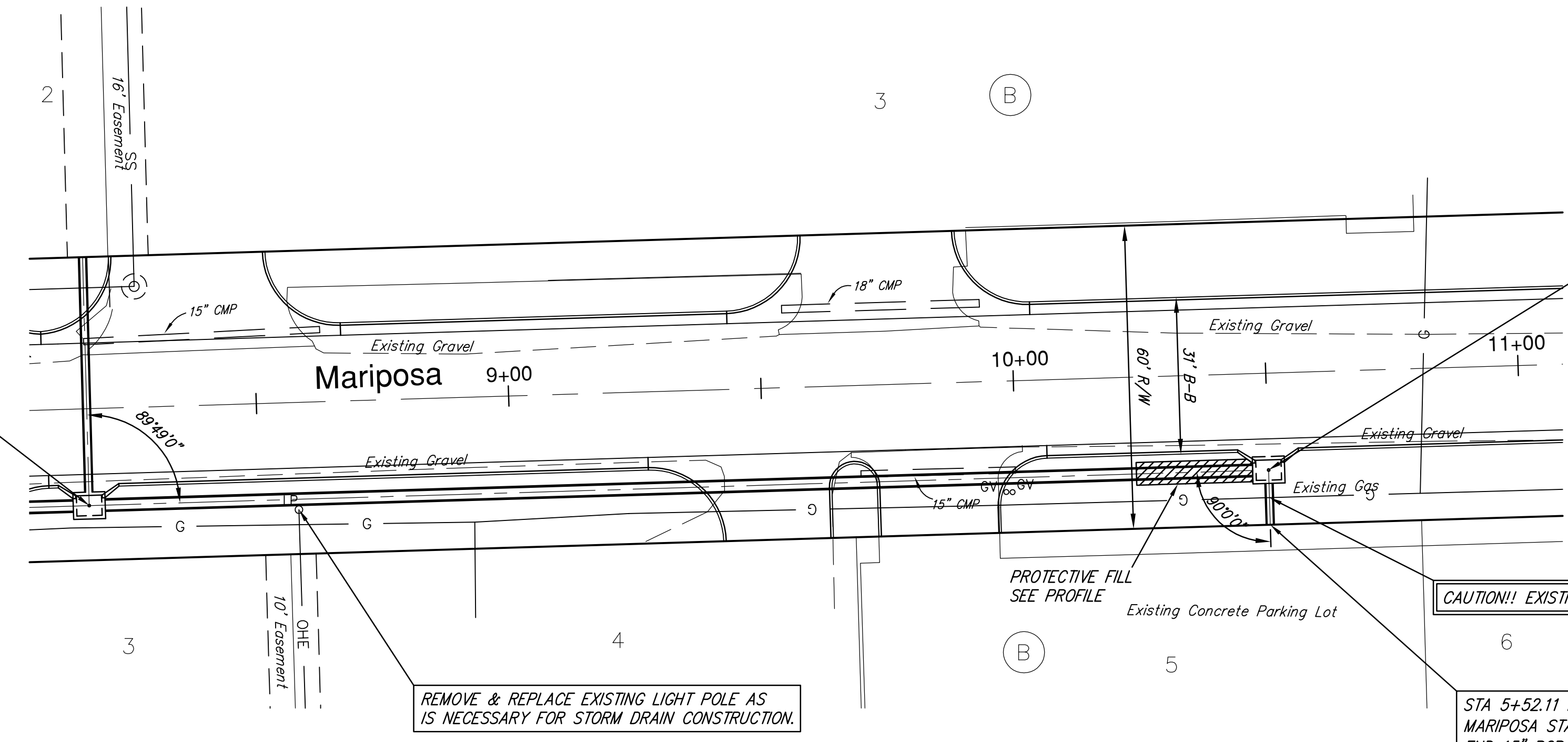


STA 3+07.63, LINE 3 =
STA 0+00 LINE 3A
CONSTRUCT TYPE 1A INLET
5'x4'
SEE NOTE SHEET 16



STA 5+41.28, LINE 3
MARIPOSA STA 10+50, 17.17' RT F.I.F.
CONSTRUCT TYPE 1A INLET
5'x4'
TOP ELEV = 1317.99
1-15" STUB (S)

ALL SEWER SHALL BE BACKFILLED WITH
NATIVE SOILS EXCEPT WHERE INDICATED
DIFFERENTLY. STREET CROSSINGS SHALL BE
BACKFILLED WITH SAND AND FLUSHED AND
VIBRATED PER CITY SPECIFICATIONS.
SUITABILITY OF EXCAVATED SAND FOR USE
AS BACKFILL WILL BE DETERMINED BY THE
ENGINEER.

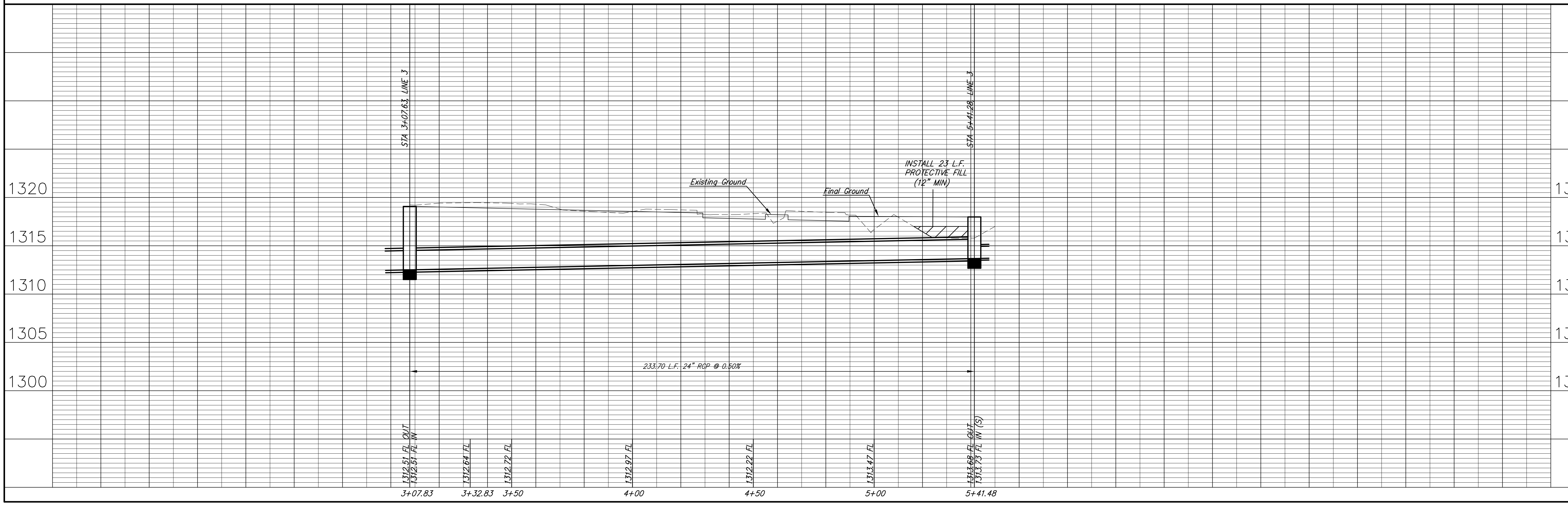
CRUSHED ROCK TO BE USED AS TEMPORARY SURFACE
IN ALL CASES WHERE PAVEMENT OR GRAVEL IS REMOVED
AND TO FILL THE VOID LEFT BY EXISTING CULVERT REMOVAL
AS NECESSARY FOR STORM SEWER CONSTRUCTION. BID ITEM
IS SUBSIDIARY TO THE BID ITEM FOR THE STORM SEWER PIPE
BEING INSTALLED.
CRUSHED ROCK IS TO BE UNIFORMLY GRADED FROM 1-1/2"
MAXIMUM SIZE TO NOT MORE THAN 10% PASSING A NO. 200
SIEVE.

REMOVE & REPLACE EXISTING LIGHT POLE AS
IS NECESSARY FOR STORM DRAIN CONSTRUCTION.

PROTECTIVE FILL
SEE PROFILE

CAUTION!! EXISTING GAS

STA 5+52.11 LINE 3
MARIPOSA STA 10+50, 30.0' RT F.I.F.
END 15" RCP WITH
PIPE PLUG (SEE SHEET 13)
FL = 1313.79



	PROJECT NUMBER 482-84648	DESIGN KWL	DRAWN RLS	REVISED
	DRAWING FILE Engineering Base	UTILITY 	DATE Sept 24, 2008	REVIEW
Pueblo, Mariposa & Sierra Storm Drain Line 3 WICHITA, KANSAS				
RB JOB 3248T	SHEET 17			OF 33