

CONSTRUCT 7" A.C. TEMPORARY HOOKUP (6" REINF. CRUSHED ROCK BASE) AS INDICATED. (147 SY)

CONSTRUCT 7" ASPHALT CONCRETE PAVEMENT W/ 6" CRUSHED ROCK BASE

STA. 0+11 SAW CUT A NEAT LINE TO MATCH EXIST. PAVEMENT. SEE SHEET 23

CAUTION!! OVERHEAD ELEC. CAUTION!! GAS

MAINTAIN DUMPSTER ACCESS AND PROTECT "NO TRESPASSING" SIGN DURING CONSTRUCTION.

REMOVE/REPLACE CONCRETE (54 S.Y.)

REGRADE GRAVEL (55 S.Y.)

STA 3+01.52 CONSTRUCT TYPE 1A INLET HOOKUP (BOTH SIDES) TOP ELEV. = 1318.80

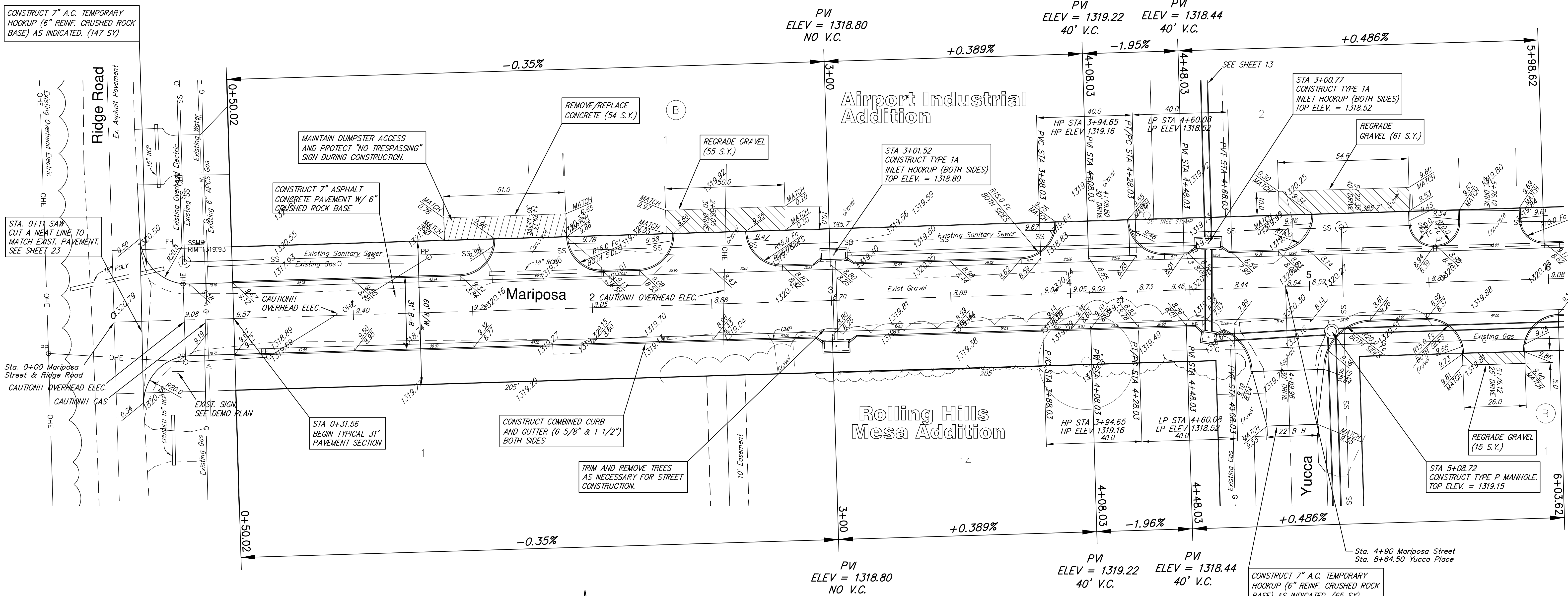
STA 3+00.77 CONSTRUCT TYPE 1A INLET HOOKUP (BOTH SIDES) TOP ELEV. = 1318.52

REGRADE GRAVEL (61 S.Y.)

REGRADE GRAVEL (15 S.Y.)

STA 5+08.72 CONSTRUCT TYPE P MANHOLE. TOP ELEV. = 1319.15

CONSTRUCT 7" A.C. TEMPORARY HOOKUP (6" REINF. CRUSHED ROCK BASE) AS INDICATED. (65 SY)



SCALE 1" = 20'
IRON = ●

NOTE: 6" CONCRETE TO BE USED IN ALL "REMOVE/REPLACE CONCRETE" AREAS

NOTE: EXISTING SANITARY SEWER MANHOLE TOP ADJUSTMENTS AND GRAVEL/ASPHALT/CONCRETE REMOVAL QUANTITY DETAILS ON DEMO PLAN SHEET SEE SHEET 23.

Airport Industrial Addition MARIPOSA WICHITA, KANSAS		DESIGN KWL	DRAWN RLS	REVIEW	UTILITY	DATE Sept 24, 2008	SHEET 7 OF 33
 Ruggles & Bohm, P.A. Engineering, Surveying, Land Planning 924 North Main Wichita, Kansas 67203 www.rbkansas.com (316) 264-8008 (316) 264-4621 fax E-mail: info@rbkansas.com		PROJECT NUMBER 472-84648					