

GENERAL NOTES

- UNLESS SHOWN OR STATED OTHERWISE ON THESE DRAWINGS, MATERIALS AND CONSTRUCTION SHALL BE IN ACCORDANCE WITH CITY OF WICHITA CONCRETE PAVEMENT AND ASPHALTIC CONCRETE PAVEMENT SPECIFICATIONS.
- CONTRACTOR WILL BE REQUIRED TO PROVIDE A MINIMUM ADVANCE NOTICE OF SEVENTY-TWO (72) HOURS TO UTILITY COMPANIES PRIOR TO STARTING ANY EXCAVATION AS FOLLOWS:

KANSAS ONE-CALL 1-800-344-7233
OR 687-2470 (LOCAL WICHITA)

THE CONTRACTOR MUST NOTIFY THE FOLLOWING IN CASE OF AN EMERGENCY:

SBC (TELEPHONE) 800-870-8390
COX COMMUNICATIONS (CABLE) 262-0661
WESTAR (ELECTRIC) 383-8600
KANSAS GAS SERVICE (GAS) 832-3101
CITY OF WICHITA WATER & SEWER MAINT. 262-6000
AQUILA (GAS) 800-303-0357

- THE CONTRACTOR SHALL BE RESPONSIBLE FOR PRESERVING PROPERTY IRONS. THE CONTRACTOR WILL BE REQUIRED TO RE-ESTABLISH ANY PROPERTY IRONS WHICH ARE DAMAGED OR DESTROYED BY HIS CONSTRUCTION OPERATIONS. SUCH IRONS SHALL BE RE-ESTABLISHED BY A LICENSED LAND SURVEYOR IN ACCORDANCE WITH STATE LAWS.
- EXISTING UTILITIES AND THEIR LOCATIONS, AS SHOWN ON THE PLANS REPRESENT THE BEST INFORMATION OBTAINABLE FOR DESIGN. LOCATION INFORMATION HAS BEEN OBTAINED FROM THE VARIOUS UTILITY COMPANIES AND IS EITHER FROM COMPANY RECORD DRAWINGS OR COMPANY PROVIDED FIELD LOCATIONS. THE PLAN LOCATIONS SHOWN ARE NOT GUARANTEED. ADDITIONAL EXISTING UTILITIES MAY ALSO BE ENCOUNTERED.
- RUBBLE FROM THE REMOVAL OF MISCELLANEOUS STRUCTURES AND EXCESS EXCAVATION WHICH IS TO BE WASTED SHALL BE DISPOSED OF ON SITES TO BE PROVIDED BY THE CONTRACTOR. THESE SITES SHALL BE APPROVED BY THE ENGINEER AS TO SUITABILITY, APPEARANCE AND SITE LOCATION. LOCATIONS THAT, IN THE OPINION OF THE ENGINEER, WILL LEAVE AN UNSIGHTLY APPEARANCE WILL NOT BE APPROVED. ALL DISPOSAL SITES MUST BE APPROVED BY THE KANSAS DEPARTMENT OF HEALTH AND ENVIRONMENT. MATERIAL EITHER STOCKPILED OR DISPOSED OF IN A FLOOD PLAIN WOULD REQUIRE A KANSAS STATE BOARD OF AGRICULTURE PERMIT. ANY MATERIAL DUMPED IN WATERS OF THE UNITED STATES OR WETLANDS IS SUBJECT TO U.S. CORPS OF ENGINEERS PERMITTING REGULATIONS. ANY MATERIAL BURIED OR STOCKPILED BEYOND APPROVED CONSTRUCTION LIMITS WOULD REQUIRE ADDITIONAL ARCHAEOLOGICAL INVESTIGATIONS UNLESS BURIED IN A PREVIOUSLY APPROVED BORROW LOCATION.
- THIS PROJECT INCLUDES A CERTAIN AMOUNT OF ROLL TYPE CURB CONSTRUCTION. ROLL CURBS SHALL BE DEPRESSED THROUGH ALL DRIVEWAY OPENINGS WHEN SUCH DRIVES ARE CONSTRUCTED AS A PART OF THE PROJECT. NO MORE THAN 2 DRIVES 20 FEET IN WIDTH OR EQUIVALENT COMBINATIONS THEREOF ARE TO BE CONSTRUCTED WITH THIS PROJECT.
- TRANSITION CURB FROM FULL HEIGHT COMBINATION CURB AND GUTTER TO ROLL TYPE COMBINATION CURB AND GUTTER IS TO BE PAID AS BID FOR LINEAL FEET COMBINED CURB AND GUTTER (3 5/8" ROLL).
- A SAW CUT OF AT LEAST ONE-HALF THE DEPTH OF THE EXISTING SURFACE COURSES OR ONE-FOURTH THE DEPTH OF THE EXISTING TOTAL PAVEMENT THICKNESS SHALL BE PROVIDED AT LOCATIONS WHERE PROPOSED CONSTRUCTION ADJUTS AN EXISTING SURFACE OR PAVEMENT FOR WHICH PARTIAL REMOVAL OF THAT SURFACE OR PAVEMENT IS REQUIRED. SAW JOINT TO FACILITATE REMOVAL WITHIN THREE (3) FEET OF EXISTING JOINTS WILL NOT BE PERMITTED AND FOR SUCH INSTANCES THE LIMITS OF REMOVAL SHALL EXTEND TO THE EXISTING JOINT. SUCH SAW CUTS WILL NOT BE PAID FOR DIRECTLY AND THIS COST SHALL BE CONSIDERED AS SUBSIDIARY TO THE REMOVAL OF SURFACE OR PAVEMENT.
- CONSTRUCTION OF MODEL HOMES WILL BE UNDERWAY ON LOTS 22-25, BLOCK 1 DURING THIS PROJECT.
- CONTRACTOR SHALL RESEED AND MULCH ALL DISTURBED AREAS AS FOLLOWS:
K-31 FESCUE AT A RATE OF 300 LBS/ACRE.

EARTHWORK

EXCAVATION 9,270 C.Y.
LOOSE FILL 3,560 C.Y.
* COMPACTED FILL 1,450 C.Y.
** COMPACTED LOT FILL 3,170 C.Y.

NOTE: EASEMENT GRADING QUANTITIES ARE INCLUDED IN THE QUANTITIES SHOWN ABOVE.
* 15% SHRINK/SWELL FACTOR ADDED
** EXCESS MATERIAL TO BE WASTED EVENLY ON LOTS 27-48, BLOCK 1. (SEE DETAIL ON SHEET 23)

PROJECT LENGTH

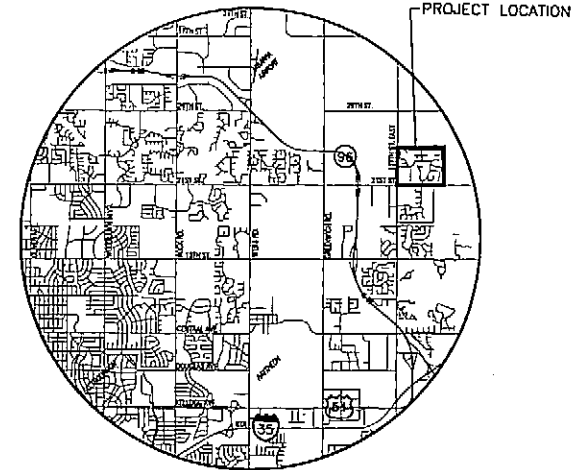
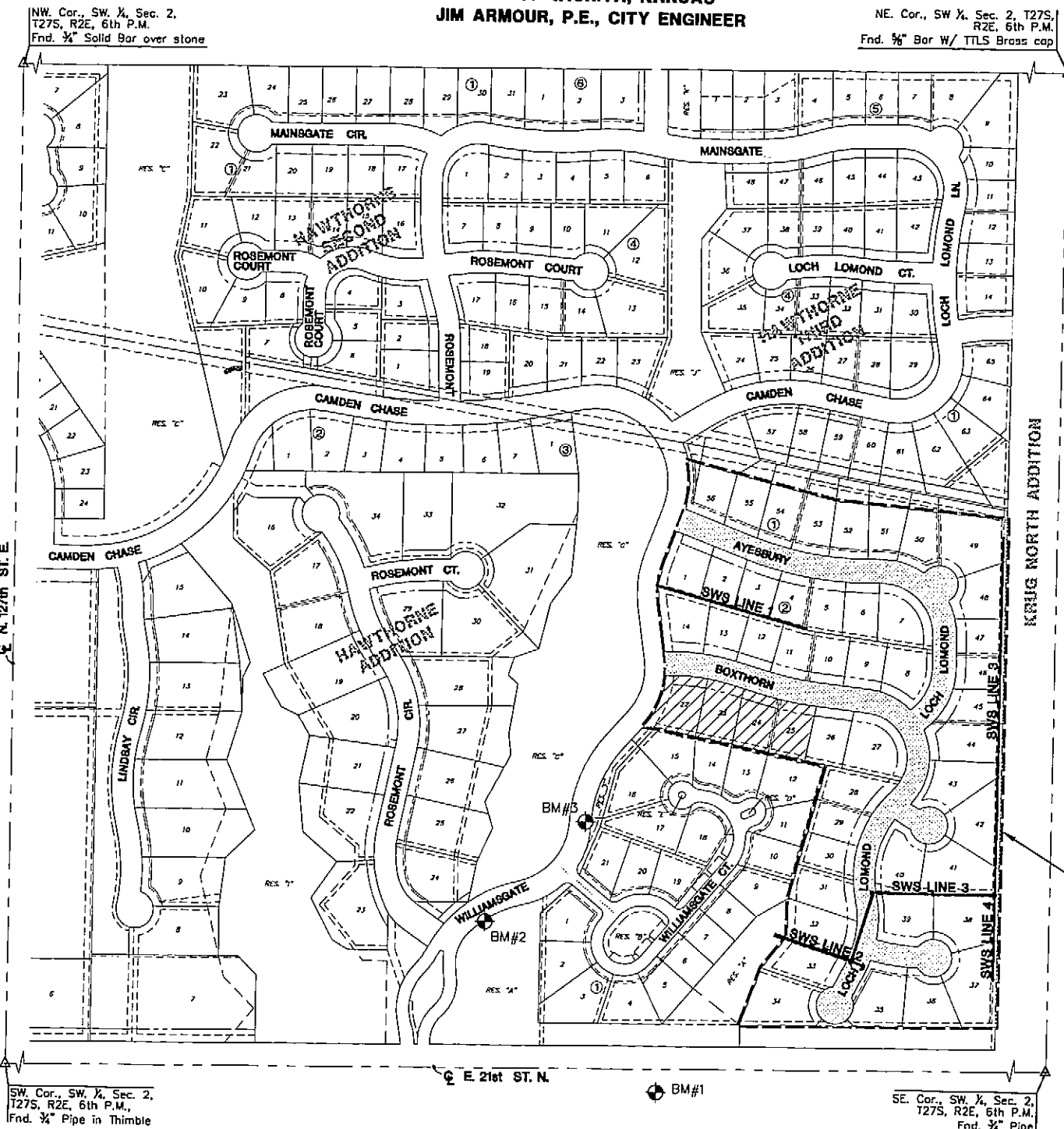
AYESBURY/LOCH LOMOND .. 1,098 L.F.
BOXTHORN/LOCH LOMOND .. 1,503 L.F.
LOCH LOMOND CT (N) 97 L.F.
LOCH LOMOND CT (S) 1,176 L.F.

**PAVING AND INCIDENTAL DRAINAGE
HAWTHORNE THIRD ADDITION**

PROJECT NO. 472-84084

O.C.A # 766101

**CITY OF WICHITA, KANSAS
JIM ARMOUR, P.E., CITY ENGINEER**



LOCATION MAP

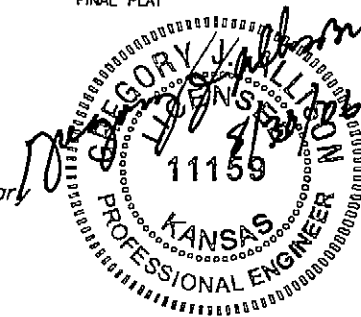
SCALE: 1" = 200'

INDEX TO DRAWINGS

SHEET NO.	DESCRIPTION
1	TITLE SHEET
2-7	PAV DETAILS
8-13	PAVING PLANS
14-15	SWS DETAILS
16-21	SWS PLANS
22-24	GRADING PLANS
25-29	BMP DETAILS
30-37	CROSS SECTIONS
38	BUBBLE MAP
39	FINAL PLAT

BENCHMARKS

- BM #1 RR SPIKE IN FACE OF 1ST PP SOUTH OF 21ST ST., 218'± WEST AND 48'± SOUTH OF THE N 1/4 COR. SECTION 11-27S-2E ELEV=1357.15
- BM #2 "□" ON NE COR. OF STORM INLET ON SOUTH SIDE OF WILLIAMSGATE ELEV=1355.74
- BM #3 C.O.W. DISC TO SWS INLET ON EAST SIDE OF WILLIAMSGATE. ELEV.=1357.98



MKEC
ENGINEERING
CONSULTANTS, INC.
411 N. WEBB ROAD
WICHITA, K.S. 67206
316-684-9600

**PAVING AND INCIDENTAL DRAINAGE PLANS
HAWTHORNE THIRD ADDITION
PHASE 4**

TITLE SHEET

SHEET TITLE
472-84084
PROJECT NUMBER

DFL, DMU, GJA
DESIGNED DRAWN CHECKED

ISSUED
August 2006

REVISED

SHEET NO.
1 of 39

PAVING CONTRACTOR WILL BE RESPONSIBLE TO OPERATE ALL WATER VALVES ON THE PROJECT, IN THE PRESENCE OF THE INSPECTOR, TO ENSURE ACCESSIBILITY TO THE VALVES, AND THAT ALL VALVES ARE LEFT IN THE "ON" POSITION WHEN THE PROJECT IS COMPLETED.

▨ = MODEL HOME LOTS (SEE NOTE 9)

H:\CML\02107\DWG\PAV_3RD_ADD\PH4\02107_ET.DWG

PLOTED: Wednesday, August 30, 2006 9:08:00AM