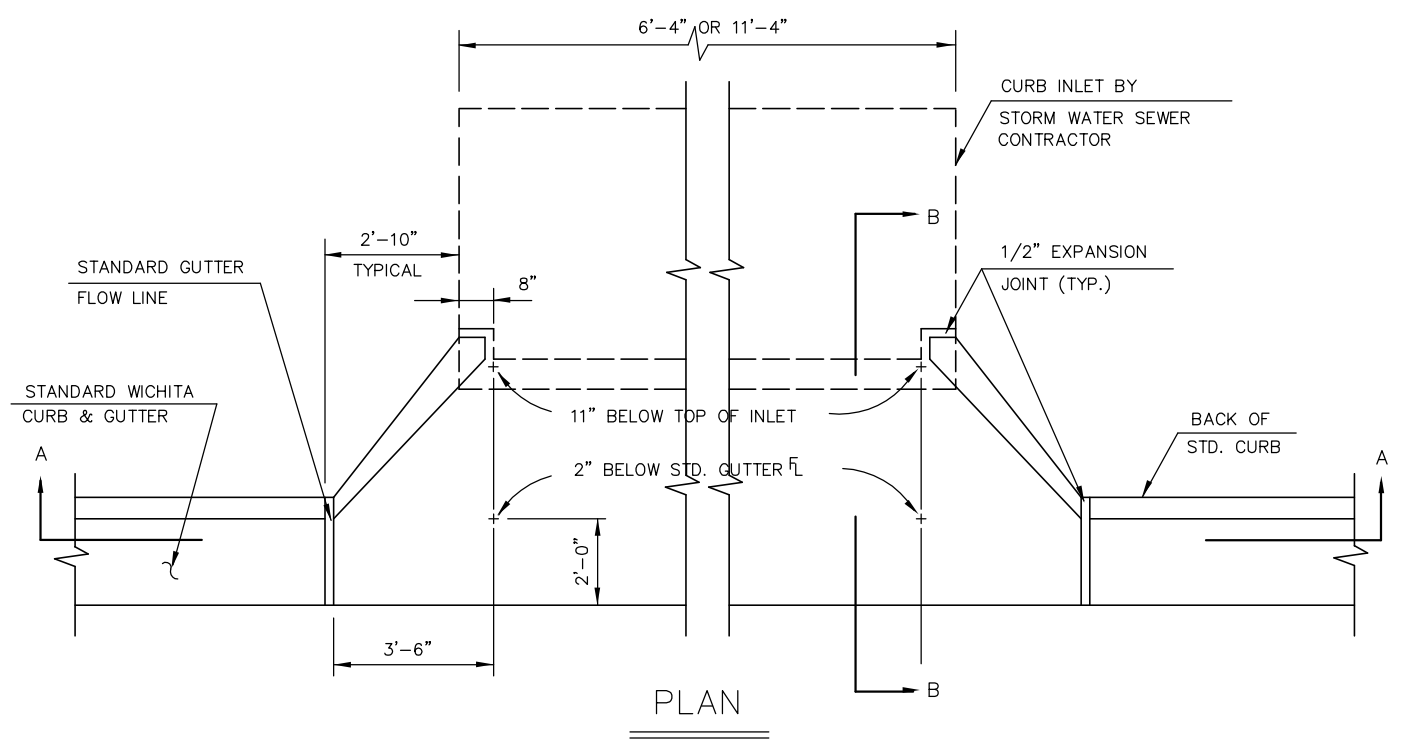


* UNDERDRAIN AGGREGATE PERCENT OF AGGREGATE RETAINED

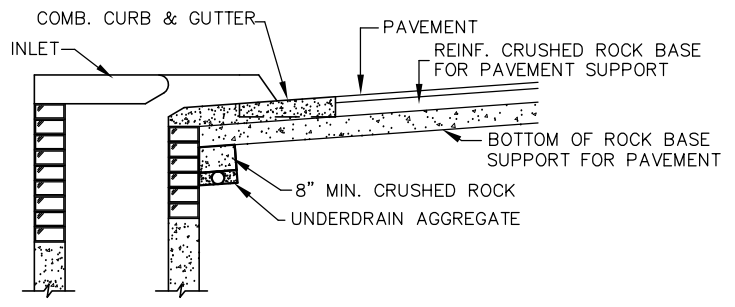
| | |
|------|-----------|
| 1" | 0 |
| 3/4" | 0 to 10 |
| 3/8" | 45 to 80 |
| #4 | 90 to 100 |
| #8 | 95 to 100 |

ROCK QUALITY SHALL CONFORM TO THE REQUIREMENTS SPECIFIED BY K.D.O.T. 1990 EDITION STANDARD SPECIFICATION SUBSECTION 1102 FOR DURABILITY CLASS 1.

PLAN

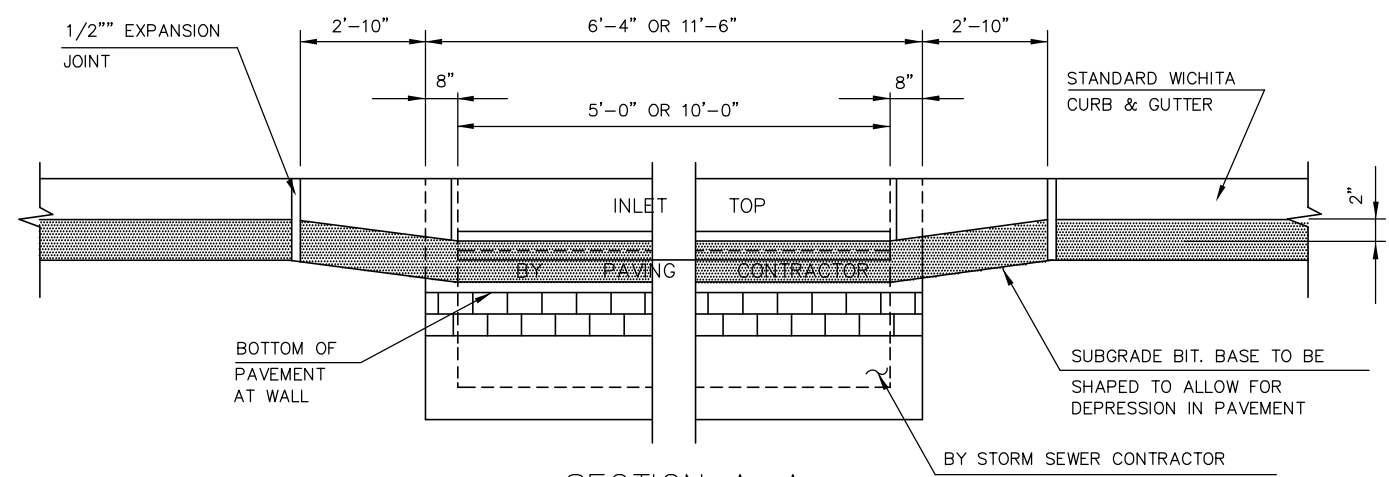


PLAN



SECTION A-A

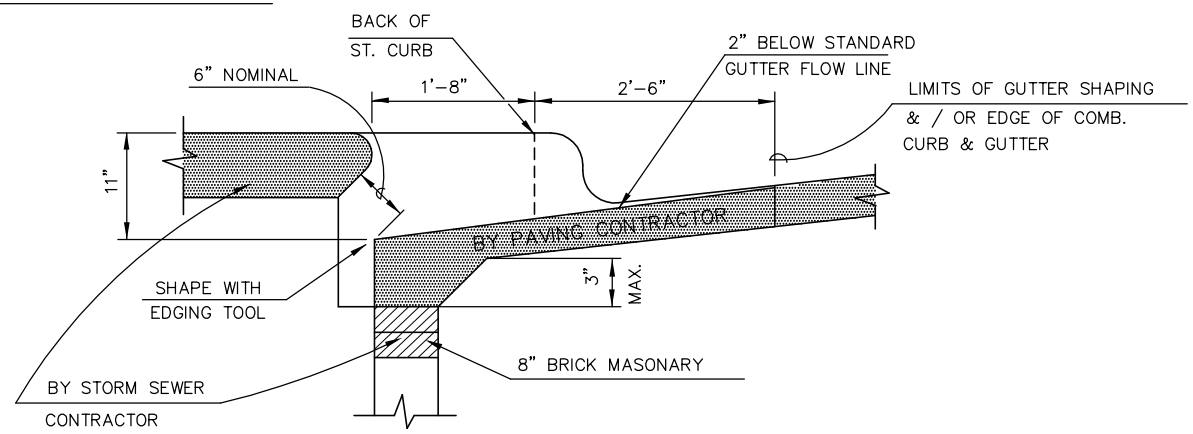
NOTE: PLACE 4" PVC PERFORATED PIPE AT ALL DRAINAGE SUMP LOCATIONS. COST OF UNDERDRAIN SYSTEM TO BE INCIDENTAL TO THE REINFORCED CRUSHED ROCK SUBGRADE. INLET TYPE MAY VARY FROM THAT SHOWN.



SECTION A-A

GENERAL NOTES

1. USE THE CONCRETE MIX SPECIFIED FOR CITY OF WICHITA CONCRETE PVMT. ALL EXPOSED EDGES SHALL BE FINISHED WITH AN EDGING TOOL.
2. TYPE 1A INLET HOOKUP WILL BE PAID EACH REGARDLESS OF SIZE.
3. ADDITIONAL CURB AND GUTTER CONSTRUCTION NECESSARY TO CONNECT SET BACK INLET TO PAVEMENT WILL BE PAID FOR AT UNIT PRICE BID FOR EACH INLET.



SECTION B-B

TYPE 1A INLET HOOKUP

(BY PAVING CONTRACTOR)

PAVEMENT UNDERDRAIN DETAIL

INLET HOOKUP AND PAVEMENT UNDERDRAIN DETAILS

SHEET TITLE

472-84084

PROJECT NUMBER

MKEC

DESIGN BY

MKEC

DRAWN BY

MKEC

CHECKED BY

ISSUED

August 2006

REVISED

SHEET NO.

7 of 39