

**PAVING AND INCIDENTAL DRAINAGE PLANS
HAWTHORNE THIRD ADDITION
PHASE 4**

BOXTHORN & LOCH LOMOND LN PAVING
SHEET TITLE
472-84084
PROJECT NUMBER

DESIGN BY: DFL
DRAWN BY: DMU
CHECKED BY: GJA

ISSUED: August 2006

REVISIONS:

SHEET NO. 11 of 39

CURVE TABLE - C7

$\Delta = 59^{\circ}09'57''$ $R = 280.00'$ $T = 158.95'$ $L = 289.14'$ $LC = 276.46'$

CURVE DATA BASED ON CENTERLINE $\Delta/2 = 29^{\circ}34'58''$

STATION	ARC	CHORD LENGTH		DEFLECTION	TOTAL DEFLECTION
		8' Off LtCb	8' Off RtCb		
19+21.60	-	-	-	00°00'00"	00°00'00"
19+50.00	28.40'	26.16'	30.62'	02°54'21"	02°54'21"
19+75.00	25.00'	23.03'	26.96'	02°33'28"	05°27'49"
20+00.00	25.00'	23.03'	26.96'	02°33'28"	08°01'17"
20+25.00	25.00'	23.03'	26.96'	02°33'28"	10°34'45"
20+50.00	25.00'	23.03'	26.96'	02°33'28"	13°08'14"
20+75.00	25.00'	23.03'	26.96'	02°33'28"	15°41'42"
21+00.00	25.00'	23.03'	26.96'	02°33'28"	18°15'10"
21+25.00	25.00'	23.03'	26.96'	02°33'28"	20°48'38"
21+50.00	25.00'	23.03'	26.96'	02°33'28"	23°22'07"
21+75.00	25.00'	23.03'	26.96'	02°33'28"	25°55'35"
22+00.00	25.00'	23.03'	26.96'	02°33'28"	28°29'03"
22+10.74	10.74'	9.89'	11.58'	01°05'55"	29°34'58"

Def/Ft = 6.13883 Min.

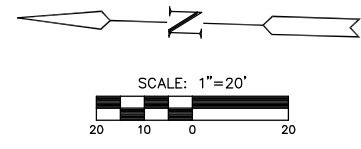
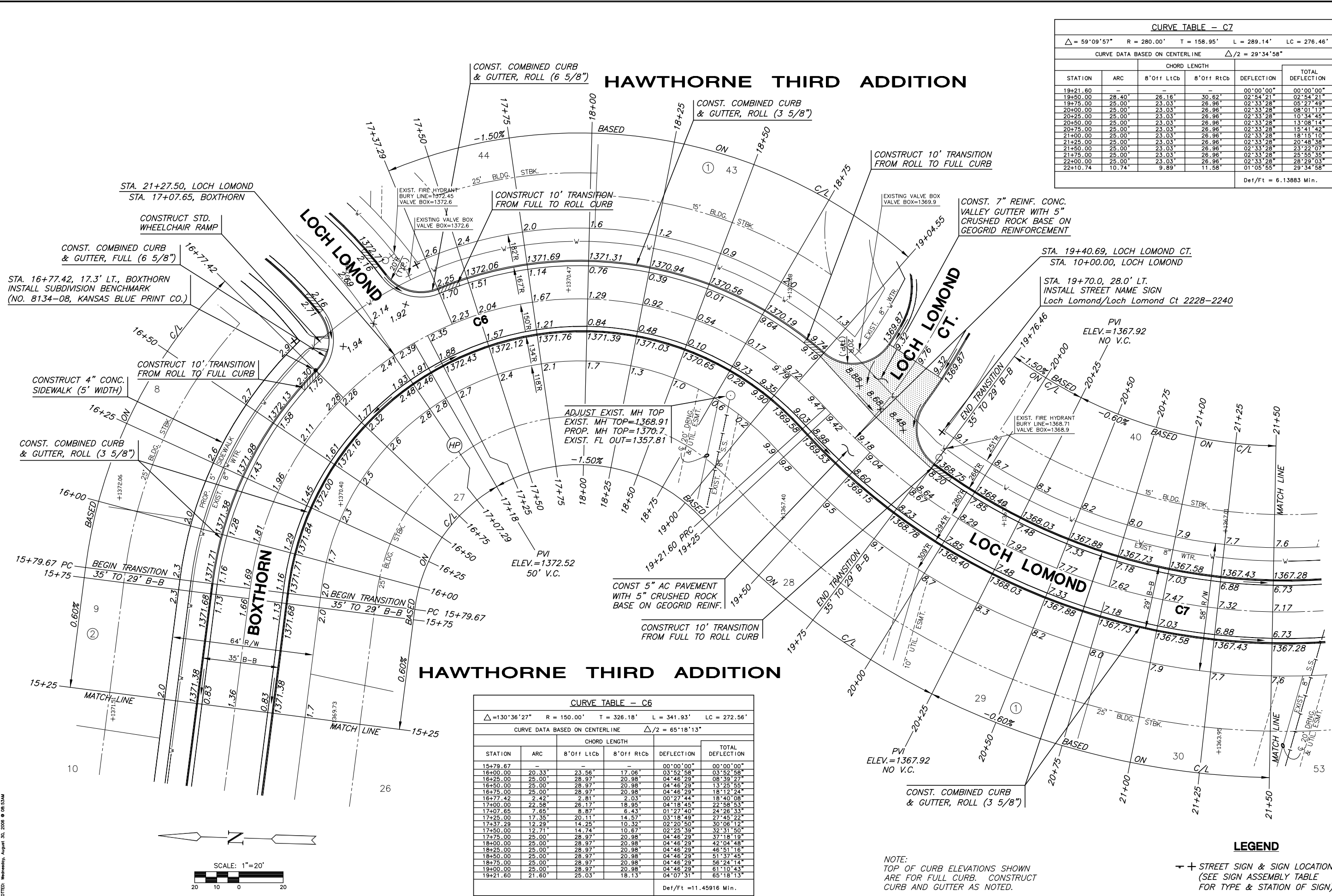
CURVE TABLE - C6

$\Delta = 130^{\circ}36'27''$ $R = 150.00'$ $T = 326.18'$ $L = 341.93'$ $LC = 272.56'$

CURVE DATA BASED ON CENTERLINE $\Delta/2 = 65^{\circ}18'13''$

STATION	ARC	CHORD LENGTH		DEFLECTION	TOTAL DEFLECTION
		8' Off LtCb	8' Off RtCb		
15+79.67	-	-	-	00°00'00"	00°00'00"
16+00.00	20.33'	23.56'	17.06'	03°52'58"	03°52'58"
16+25.00	25.00'	28.97'	20.98'	04°46'29"	08°39'27"
16+50.00	25.00'	28.97'	20.98'	04°46'29"	13°25'55"
16+75.00	25.00'	28.97'	20.98'	04°46'29"	18°12'24"
16+77.42	2.42'	2.81'	2.03'	00°27'44"	18°40'08"
17+00.00	22.58'	26.17'	18.95'	04°18'45"	22°58'53"
17+07.65	7.65'	8.87'	6.43'	01°27'40"	24°26'33"
17+25.00	17.35'	20.11'	14.57'	03°18'49"	27°45'22"
17+37.29	12.29'	14.25'	10.32'	02°20'50"	30°06'12"
17+50.00	12.71'	14.74'	10.67'	02°25'39"	32°31'50"
17+75.00	25.00'	28.97'	20.98'	04°46'29"	37°18'19"
18+00.00	25.00'	28.97'	20.98'	04°46'29"	42°04'48"
18+25.00	25.00'	28.97'	20.98'	04°46'29"	46°51'16"
18+50.00	25.00'	28.97'	20.98'	04°46'29"	51°37'45"
18+75.00	25.00'	28.97'	20.98'	04°46'29"	56°24'14"
19+00.00	25.00'	28.97'	20.98'	04°46'29"	61°10'43"
19+21.60	21.60'	25.03'	18.13'	04°07'31"	65°18'13"

Def/Ft = 11.45916 Min.



NOTE:
TOP OF CURB ELEVATIONS SHOWN
ARE FOR FULL CURB. CONSTRUCT
CURB AND GUTTER AS NOTED.

LEGEND
+ + STREET SIGN & SIGN LOCATION
(SEE SIGN ASSEMBLY TABLE
FOR TYPE & STATION OF SIGN)

PLOTTER: Wednesday, August 30, 2006 @ 08:53AM

H:\CIVIL\02167\DWG\PAV\3RD_ADD_P4\02167_E4.DWG