

# EMERALD BAY ESTATES SECOND ADDITION

Wichita, Sedgwick County, Kansas



1" = 100'

BLOCK	LOT NO.'S	ELEVATION (N.G.V.D.)
1	1 - 56	1321.0

CH = Chord  
M = Measured  
C = Calculated  
(A) = Assumed

**SURVEY MARKER LEGEND**

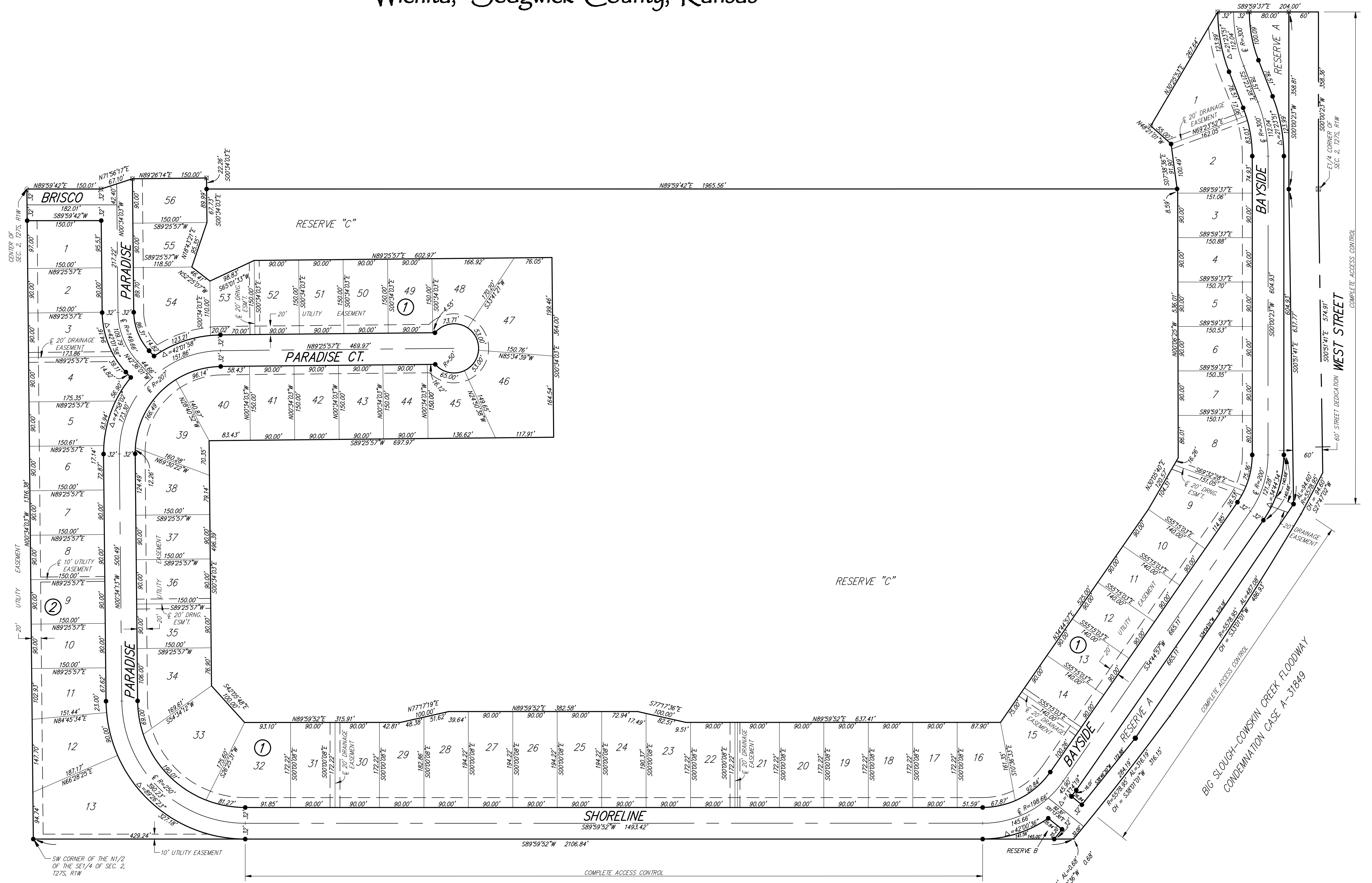
- ..... 1/2" IRON PIPE
- ⊠ ..... RAILROAD SPIKE
- ⊠ ..... 5"x5" CONCRETE MONUMENT WITH A 5/8" REBAR
- ⊠ ..... 5/8" REBAR W/RUGGLES & BOHM CAP (FOUND)
- ⊠ ..... 5/8" REBAR W/RUGGLES & BOHM CAP (SET)

BENCH MARK: CITY OF WICHITA BRASS DISK ON THE NORTHWEST CORNER OF A R.C.B.C., 0.75 MILES EAST OF HOOVER ON 21ST ST. NORTH ELEVATION = 1321.62 (NGVD29)

BENCH MARK: CITY OF WICHITA BRASS DISK TOP OF HEADWALL OF R.C.B.C UNDER WEST STREET, NORTH OF 29TH ST. NORTH ON EAST SIDE OF WEST ST. ELEVATION = 1321.80 (NGVD29)

BENCH MARK: CITY OF WICHITA BRASS DISK AT THE NORTHWEST CORNER OF HOOVER AND 21ST ST. NORTH ELEVATION = 1326.47 (NGVD29)

BENCH MARK: CITY OF WICHITA BRASS DISK AT THE SOUTHWEST CORNER OF HOOVER AND 29TH ST. NORTH ELEVATION = 1330.16 (NGVD29)



DWG FILE: SURVEY BASE  
PROJECT NO. 3322P  
DECEMBER 3, 2008

**Ruggles & Bohm, P.A.**  
Engineering, Surveying, Land Planning

924 North Main  
Wichita, Kansas 67203  
www.rbkansas.com

(316) 264-8008  
(316) 264-4621 fax  
E-mail: info@rbkansas.com