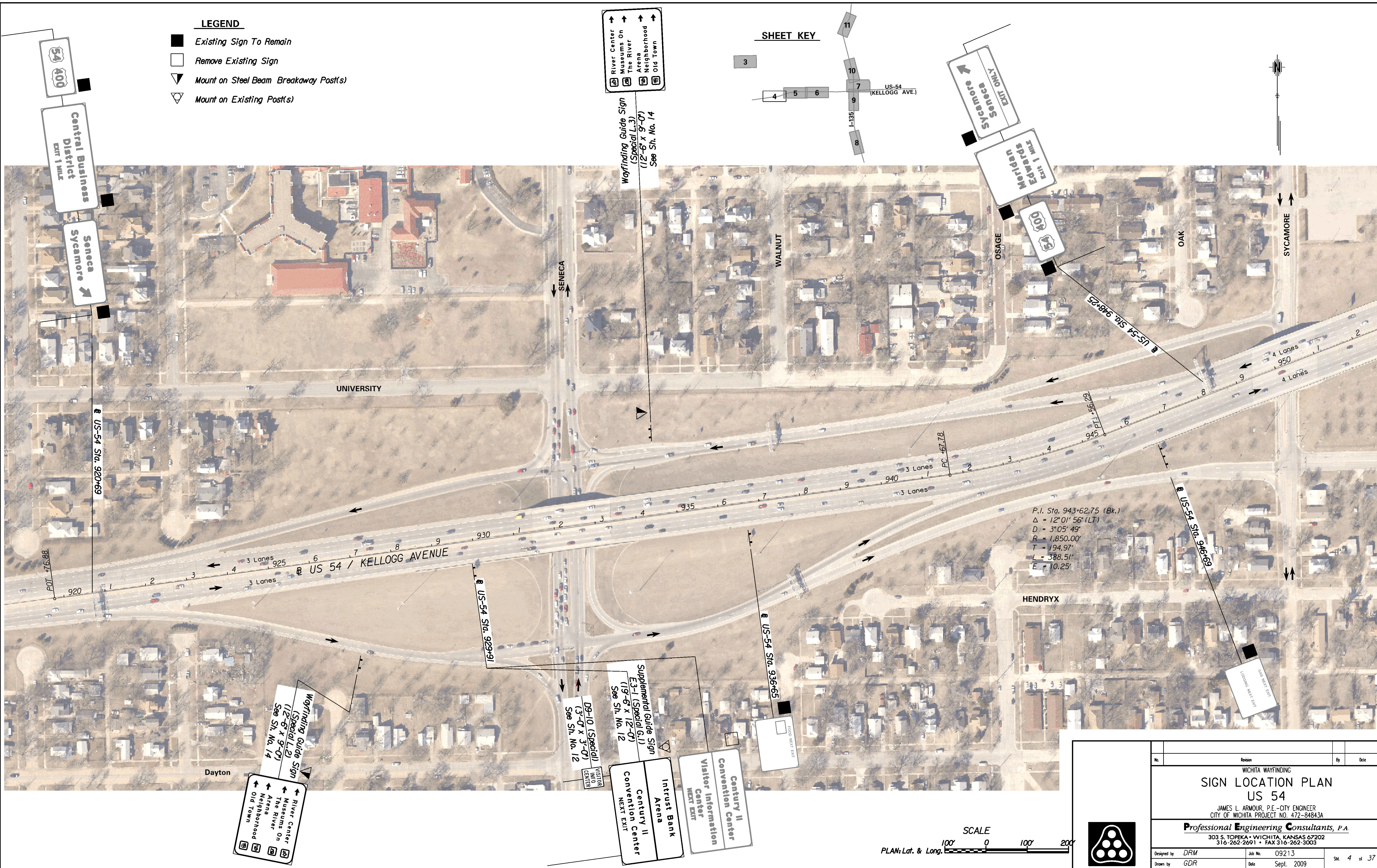


Plotted By: gdr Date: 9/17/2009 10:45:56 AM
 FILE: I:\2009\09213\Plan\09213-Plan-Kel_Seneca_Alt2.dgn

LEGEND

- Existing Sign To Remain
- Remove Existing Sign
- ▼ Mount on Steel Beam Breakaway Post(s)
- ▽ Mount on Existing Post(s)



P.I. Sta. 943+62.75 (Bk.)
 $\Delta = 12^{\circ}01'56''$ (LT)
 $D = 3^{\circ}05'49''$
 $R = 1,850.00'$
 $T = 194.97'$
 $L = 388.51'$
 $E = 10.25'$

SCALE
 PLAN: Lat. & Long. 100' 0 100' 200'

No.	Revision	By	Date
WICHITA WAYFINDING SIGN LOCATION PLAN US 54 JAMES L. ARMOUR, P.E. - CITY ENGINEER CITY OF WICHITA PROJECT NO. 472-84843A Professional Engineering Consultants, P.A. 303 S. TOPKA • WICHITA, KANSAS 67202 316-262-2691 • FAX 316-262-3003			
Designed by	DRM	Job No.	09213
Drawn by	GDR	Date	Sept. 2009
			SM. 4 of 37