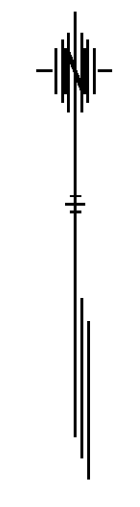
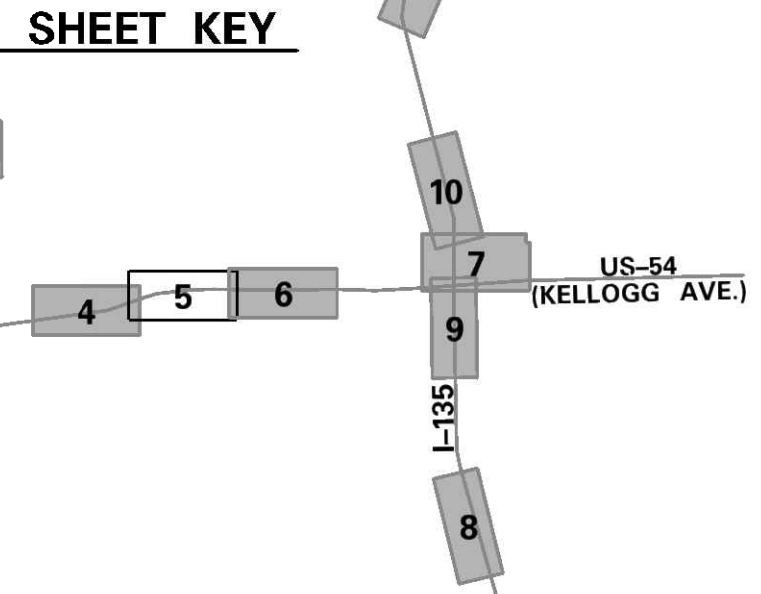
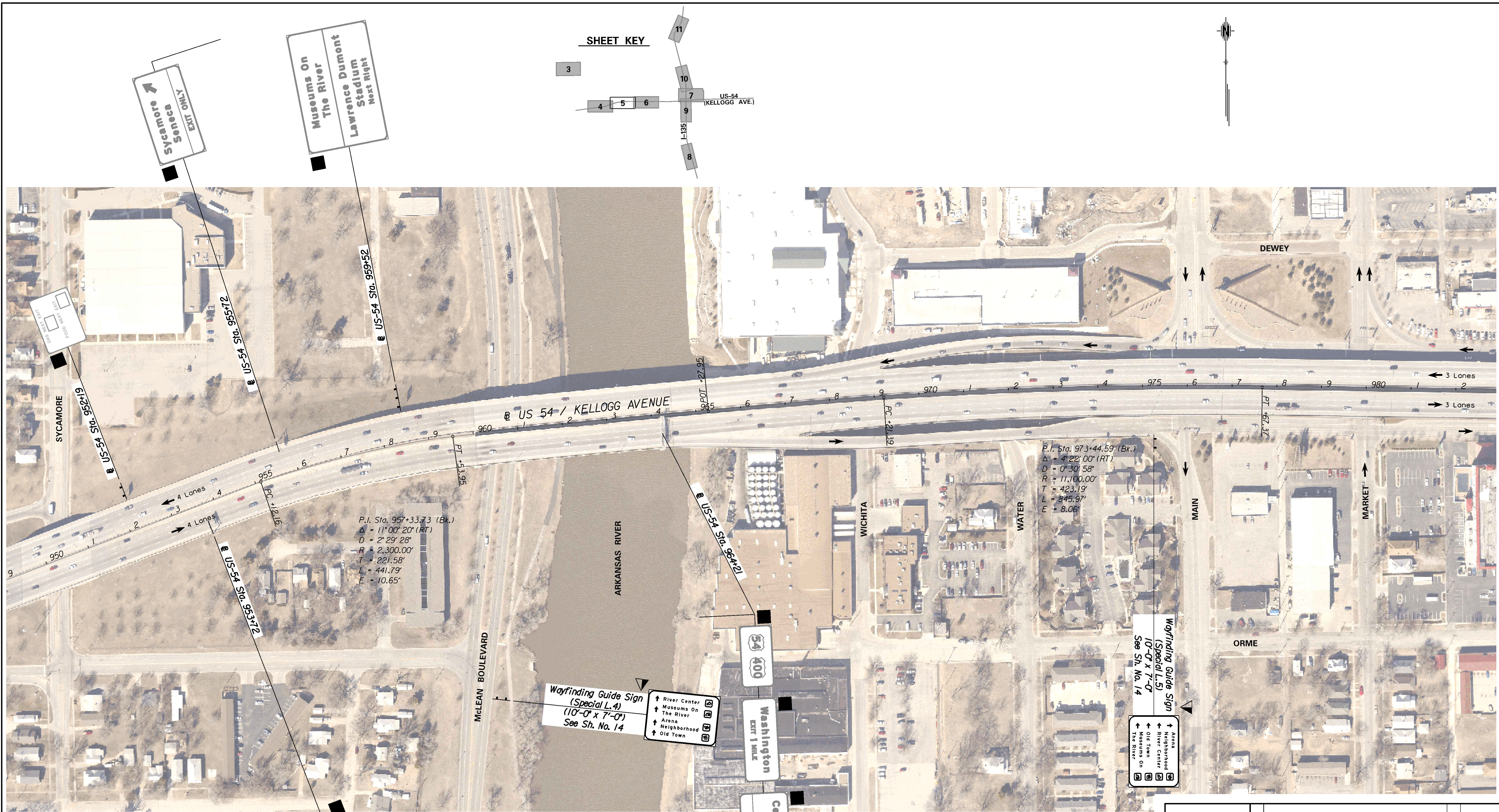


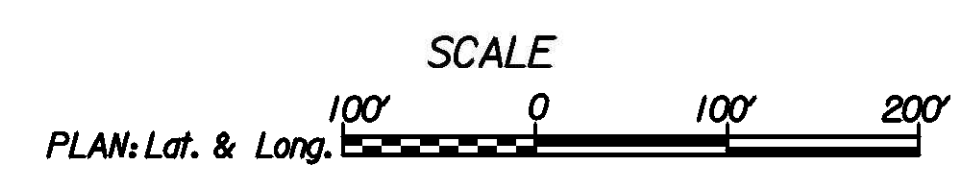
Plotted By: gdr Date: 9/17/2009 10:50:32 AM
 FILE: i:\2009\09213\Plan\09213-Plan-Kel_River.dgn



LEGEND

- Existing Sign To Remain
- ▼ Mount on Steel Beam Breakaway Post(s)

Central Business District
EXIT ONLY



P.I. Sta. 957+33.73 (Bk.)
 Δ = 11°00' 20" (RT)
 D = 2' 29' 28"
 R = 2,300.00'
 T = 221.58'
 L = 441.79'
 E = 10.65'

P.I. Sta. 973+44.59 (Bk.)
 Δ = 4° 22' 00" (RT)
 D = 0° 30' 58"
 R = 11,100.00'
 T = 423.19'
 L = 845.97'
 E = 8.06'

Wayfinding Guide Sign
 (Special L, 4)
 (10'-0" x 7'-0")
 See Sh. No. 14

- ↑ River Center
- ↑ Museums On The River
- ↑ Arena
- ↑ Neighborhood
- ↑ Old Town

Wayfinding Guide Sign
 (Special L, 5)
 (10'-0" x 7'-0")
 See Sh. No. 14

- ↑ Arena
- ↑ Neighborhood
- ↑ River Center
- ↑ Old Town
- ↑ Museums On The River

No.	Revision	By	Date
WICHITA WAYFINDING			
SIGN LOCATION PLAN			
US 54			
JAMES L. ARMOUR, P.E. - CITY ENGINEER CITY OF WICHITA PROJECT NO. 472-84843A			
Professional Engineering Consultants, P.A.			
303 S. TOPEKA • WICHITA, KANSAS 67202 316-262-2691 • FAX 316-262-3003			
Designed by	DRM	Job No.	09213
Drawn by	GDR	Date	Sept. 2009
			SM. 5 of 37

