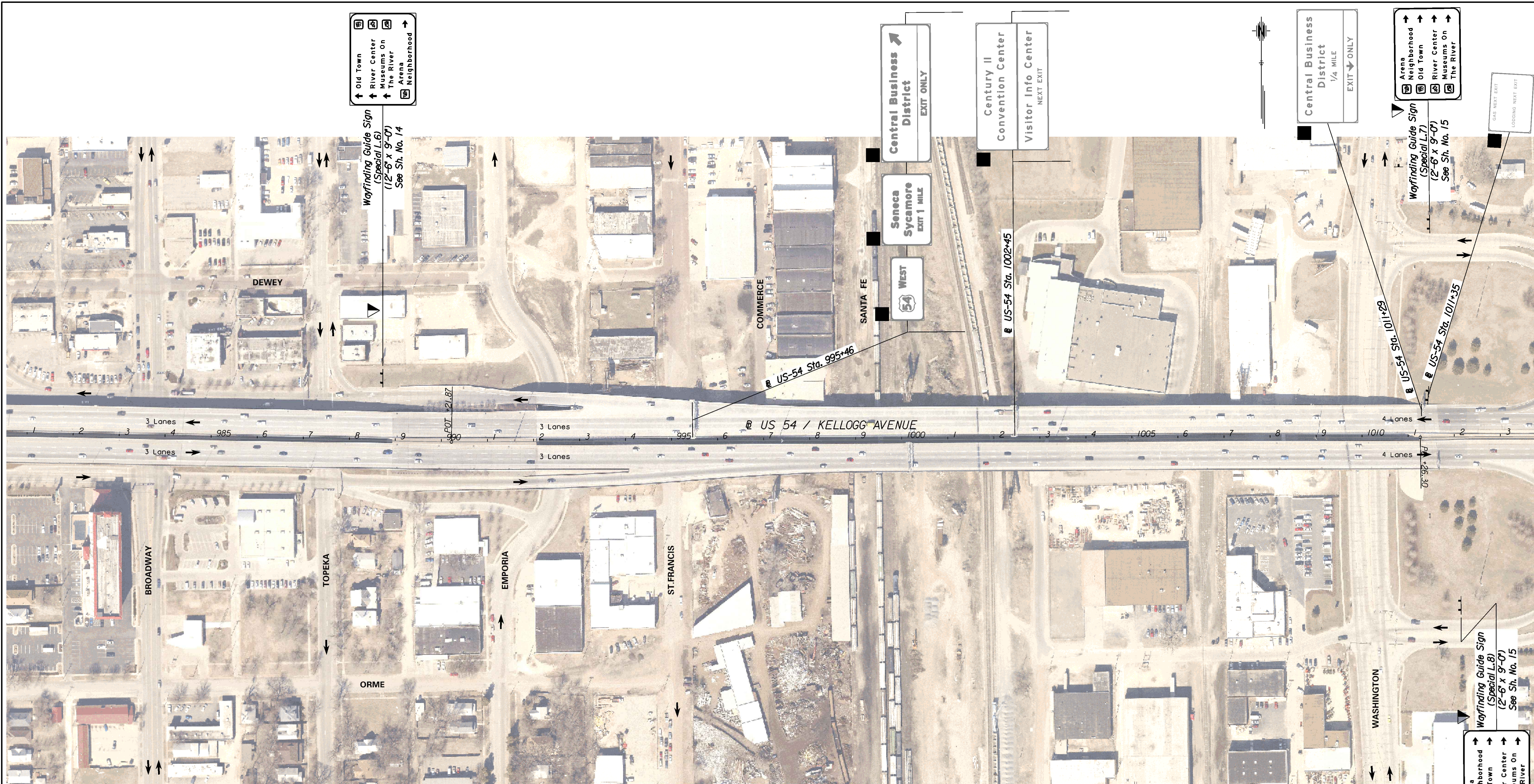


Plotted By: gdr Date: 9/17/2009 10:52:36 AM
 FILE: I:\2009\09213\Plan\09213-Plan-Kel_Downtown.dgn



Wayfinding Guide Sign
 (Special L.6)
 (12'-6" x 9'-0")
 See Sh. No. 14

- Old Town
- River Center Museums On The River
- Arena Neighborhood

Central Business District
 EXIT ONLY

Century II Convention Center
 Visitor Info Center
 NEXT EXIT

Central Business District
 1/4 MILE
 EXIT ONLY

Wayfinding Guide Sign
 (Special L.7)
 (2'-6" x 9'-0")
 See Sh. No. 15

- Arena Neighborhood
- Old Town
- River Center Museums On The River

Wayfinding Guide Sign
 (Special L.8)
 (2'-6" x 9'-0")
 See Sh. No. 15

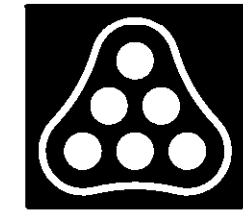
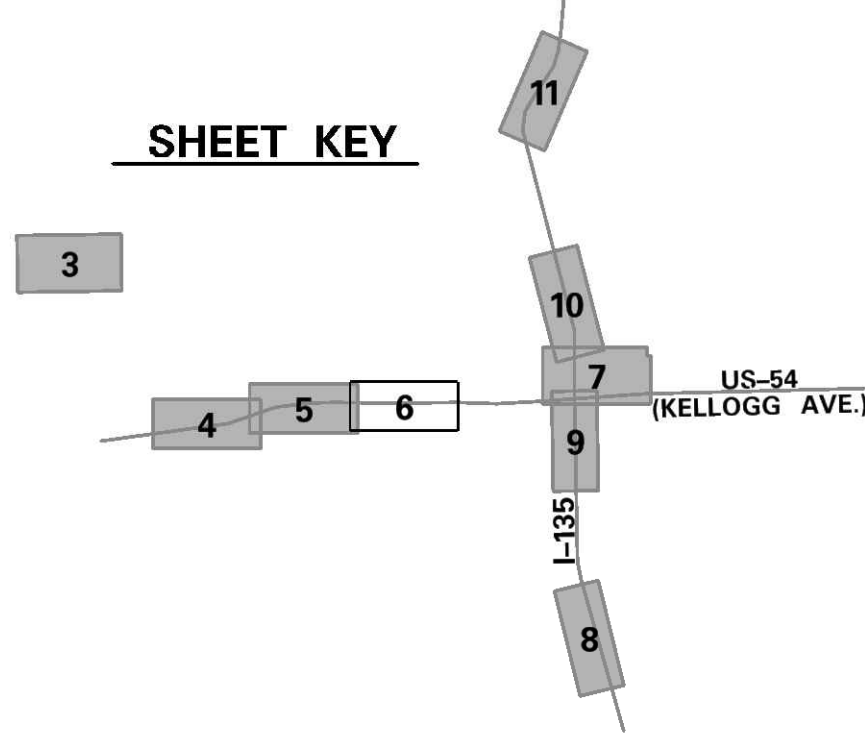
- Arena Neighborhood
- Old Town
- River Center Museums On The River

LEGEND

- Existing Sign To Remain
- ▼ Mount on Steel Beam Breakaway Post(s)



SHEET KEY



No.	Revision	By	Date
WICHITA WAYFINDING			
SIGN LOCATION PLAN			
US 54			
JAMES L. ARMOUR, P.E. - CITY ENGINEER CITY OF WICHITA PROJECT NO. 472-84843A			
Professional Engineering Consultants, P.A. 303 S. TOPEKA • WICHITA, KANSAS 67202 316-262-2691 • FAX 316-262-3003			
Designed by	DRM	Job No.	09213
Drawn by	GDR	Date	Sept. 2009
			SM. 6 of 37