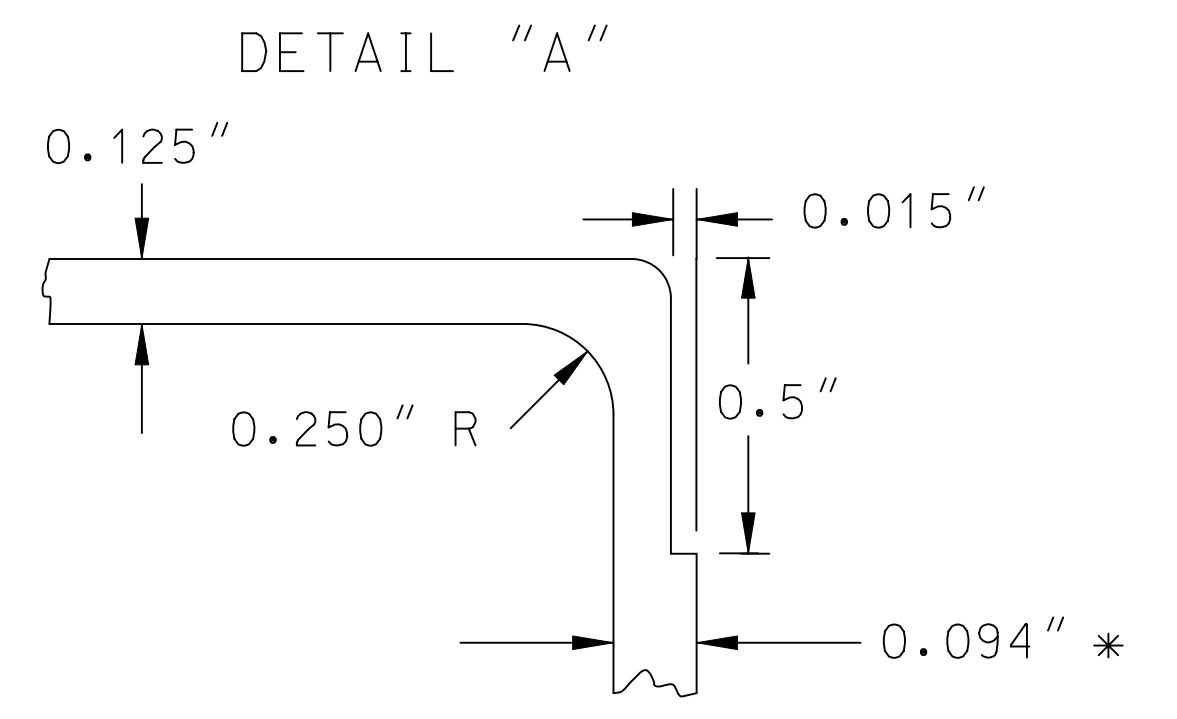
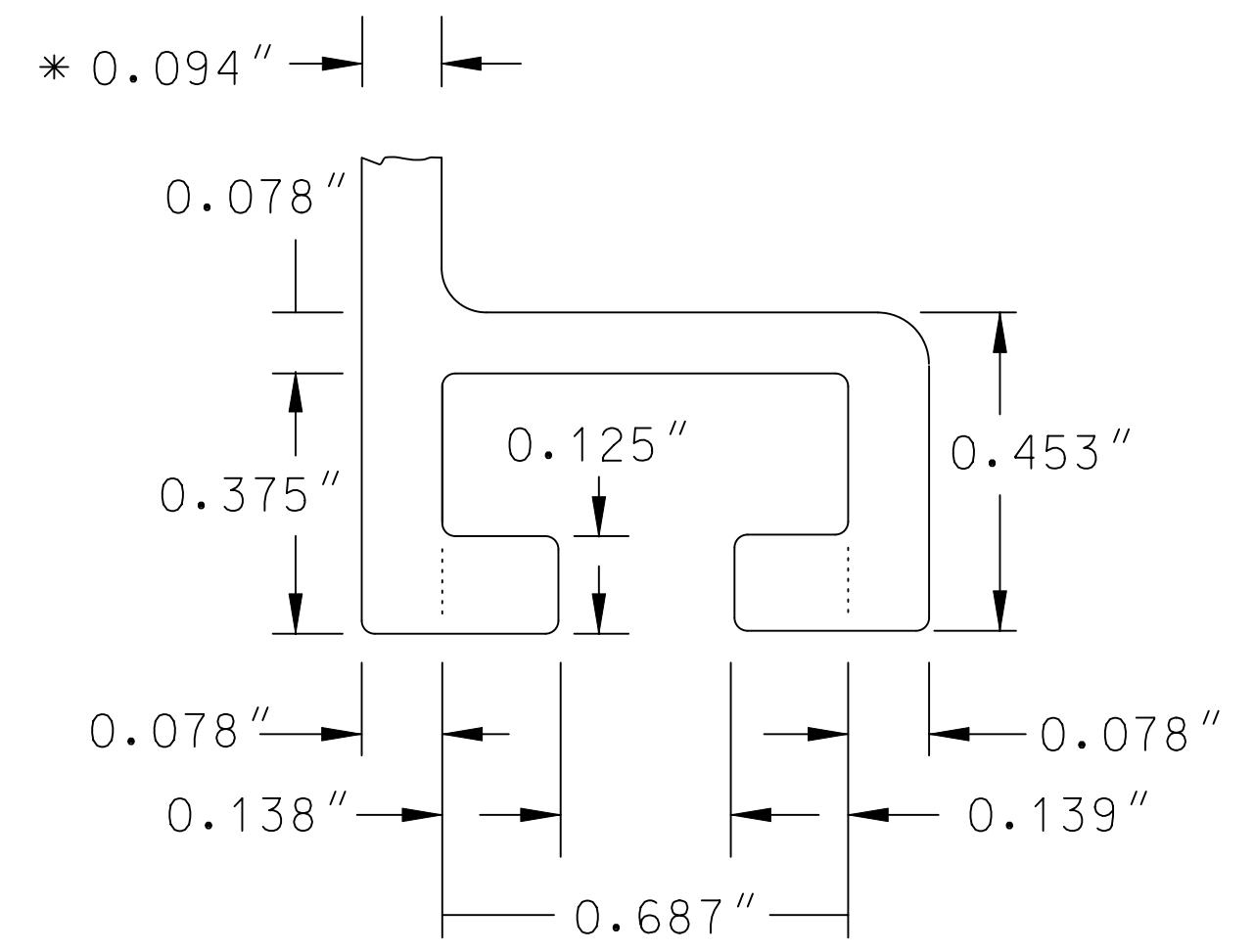
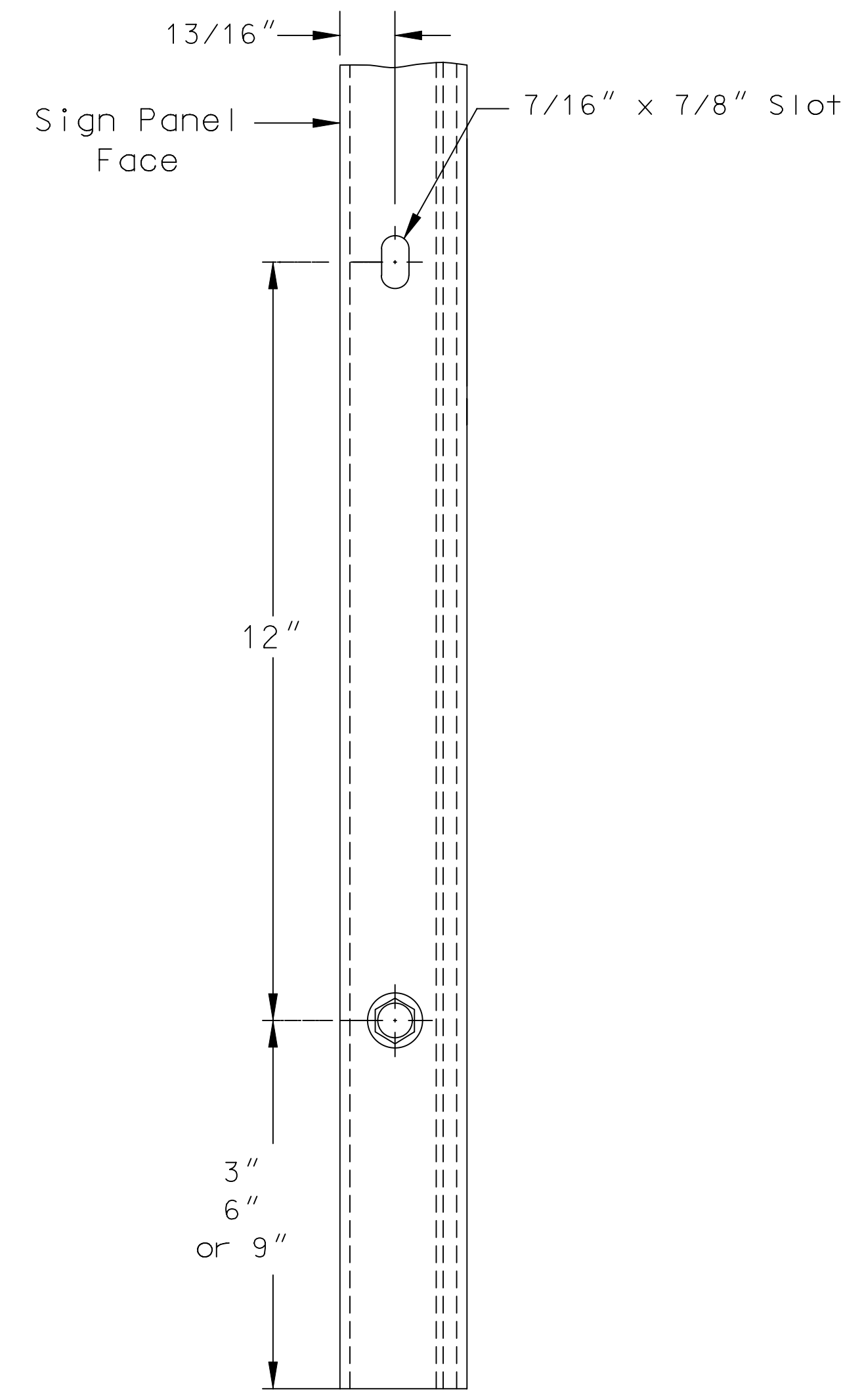
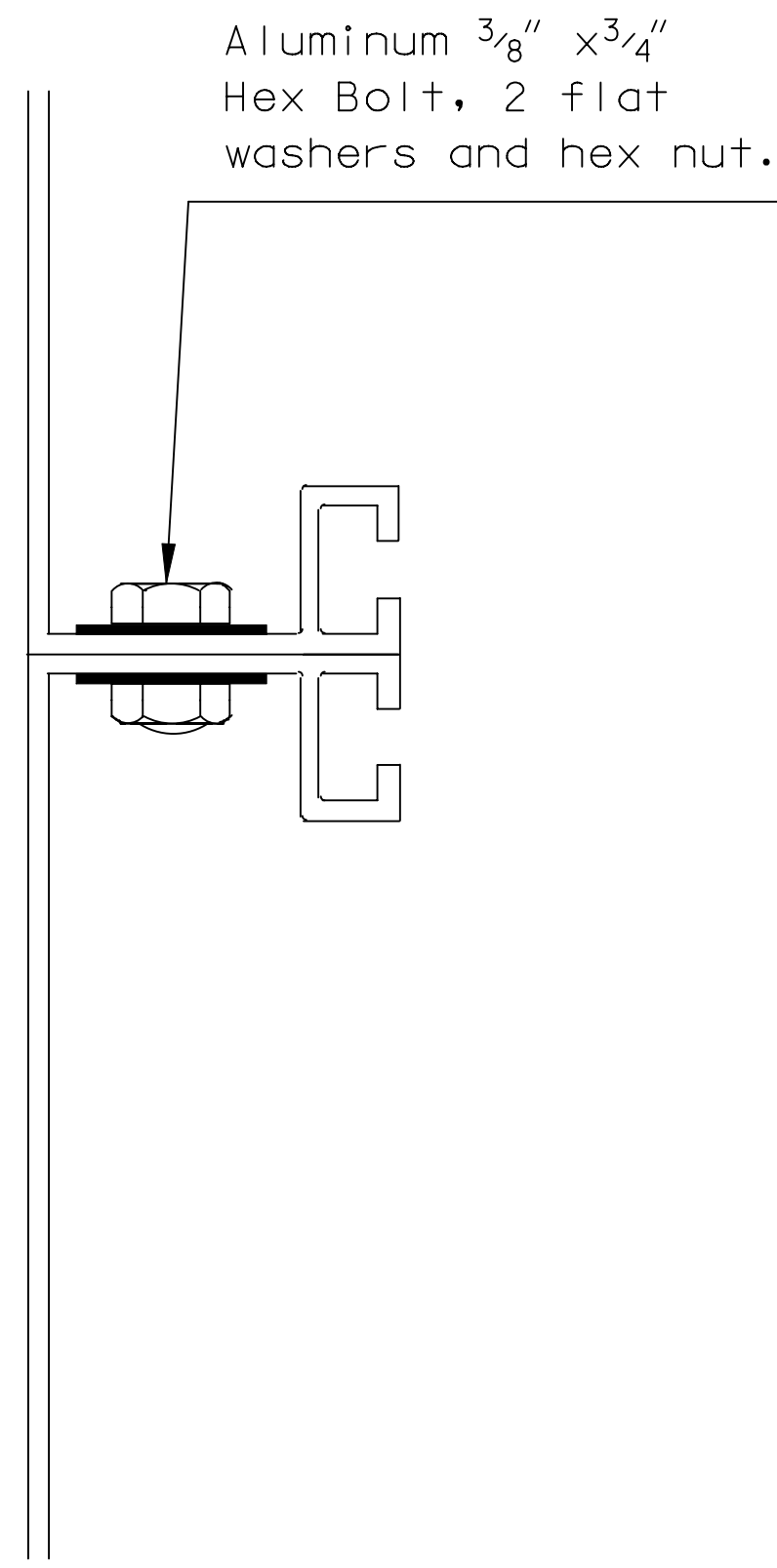
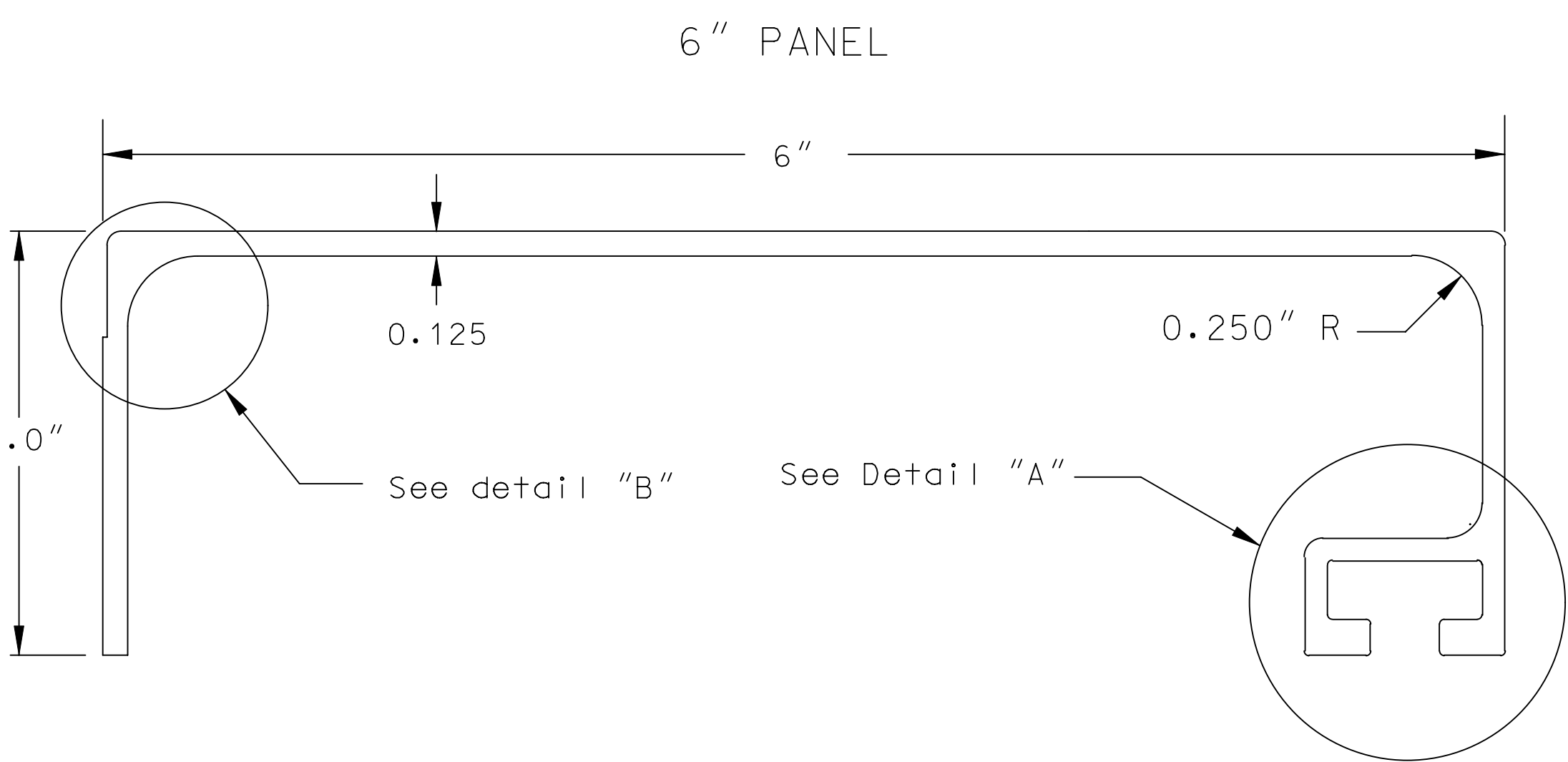
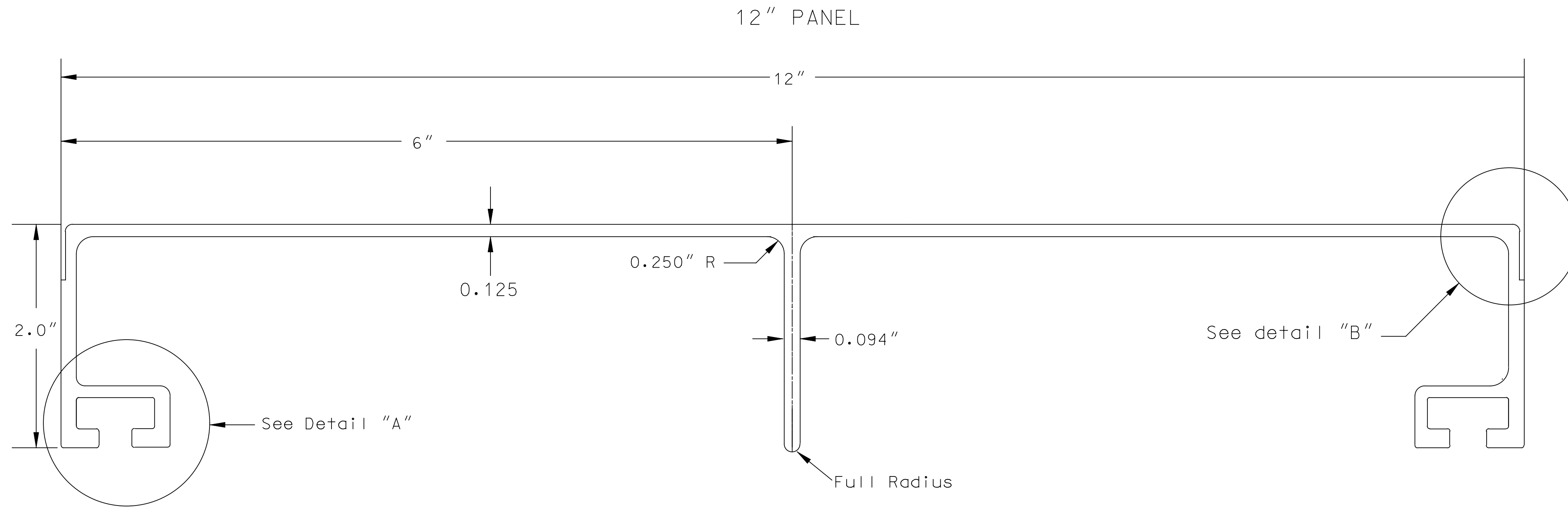


STATE	PROJECT NO.	YEAR	SHEET NO.	TOTAL SHEETS
KANSAS	C.O.W. No. 472-B4843A	2009	28	37



DETAIL "B"
 0.031" Radius on all unspecified Rounds and Fillets.
 * 0.078" for 6" panel

NOTE:
 For extruded panel signs with an overall height in intervals of 6", use the 6" panel at the top or bottom of the sign. All other panels are to be the 12" panel.

All dimensions are in inches.

3					
2					
1					
NO.	DATE	REVISIONS	BY	APP'D	
KANSAS DEPARTMENT OF TRANSPORTATION REINFORCED PANEL DETAILS EXTRUDED FABRICATION (0.125") (1 OF 2)					
TE554 07-01-03					
FHWA APPROVAL 07-22-2003 APP'D Steven A. Buckley					
DESIGNED	DDG	DETAILED	BAH	QUANTITIES	TRACED
DESIGN CK.	SAB	DETAIL CK.	DDG	QUAN. CK.	TRACE CK.

Plotted By : gdr \$K0076RPR.6th Floor
 Plot File : I:\2009\09213\Standards\09213-Standards-TE554.dgn
 Plot Date : 9/16/2009