

STATE	PROJECT NO.	YEAR	SHEET NO.	TOTAL SHEETS
KANSAS	C.O.W. No. 472-84843A	2009	37	37

REFER TO STD. TE710 FOR ADDITIONAL INFORMATION ON TEMPORARY TRAFFIC CONTROL SIGNS AND SIGN SPACING.
REFER TO STD. TE702 FOR INFORMATION ON TAPERS AND CHANNELIZING DEVICES.
REFER TO STD. TE700 FOR LENGTH OF BUFFER SPACE.

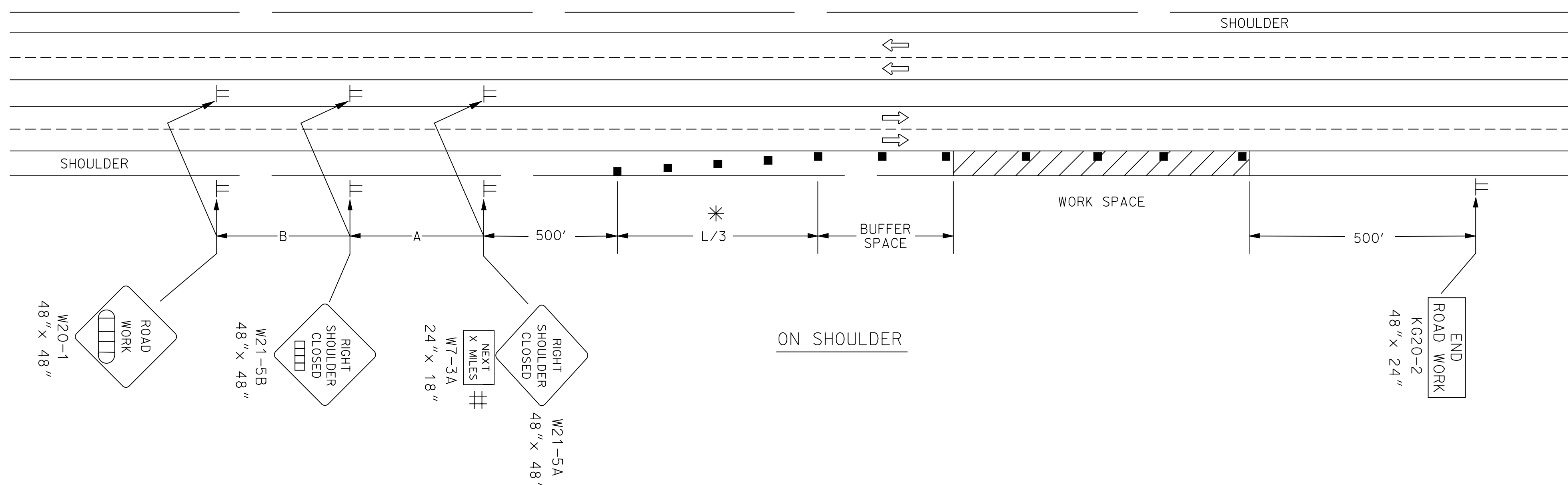
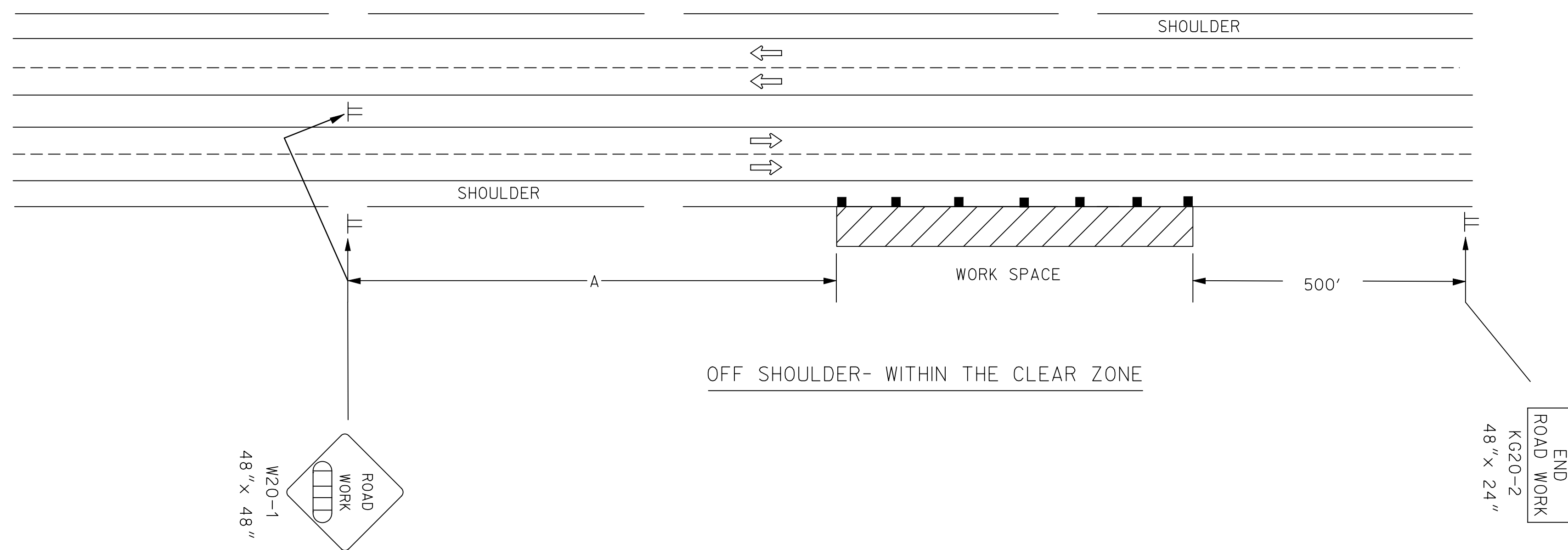
NOTE:

FOR WORK IN THE MEDIAN, INSTALL SIGNS AND CHANNELIZING DEVICES FOR EACH DIRECTION OF TRAFFIC ACCORDING TO THE APPLICABLE TYPICAL DRAWING.

NO TRAFFIC CONTROL IS REQUIRED IF THE WORK SPACE IS LOCATED OUTSIDE OF THE CLEAR ZONE.

FOR OPERATIONS OF 60 MINUTES OR LESS, ALL SIGNS AND CHANNELIZING DEVICES MAY BE ELIMINATED IF A VEHICLE WITH A HIGH-INTENSITY ROTATING, FLASHING, OSCILLATING, OR STROBE LIGHT IS USED.

WHEN CONCRETE BARRIER SYSTEM IS USED, PORTABLE CHANNELIZING DEVICES ARE NOT NEEDED ALONG THE TANGENT BARRIER SECTION. DELINEATION ON THE BARRIER SYSTEM IS STILL REQUIRED. SEE RD622.



ELIMINATE W7-3A IF SHOULDER IS CLOSED FOR LESS THAN 2 MILES.

* OMIT TAPER IF PAVED SHOULDER IS LESS THAN 8' WIDE.

- X Length To The Nearest Whole Mile
- Channelizing Device
- AHEAD, 1500 FT, OR 1 MILE
- AHEAD, 1000 FT, 1500 FT OR 1/2 MILE

3	4-20-09	COMBINED AND MOVED GENERAL NOTE	J.M.	A.A.A.
2	8-8-07	G20-2 CHANGED TO KG20-2	M.B.	A.A.A.
1	12-29-05	UPDATED END ROAD WORK SIGN DESIGNATION	M.B.	A.A.A.
NO.	DATE	REVISIONS	BY	APP'D

KANSAS DEPARTMENT OF TRANSPORTATION
TYPICAL TRAFFIC CONTROL
WORK ON OR NEAR THE SHOULDER
DIVIDED HIGHWAY

TE722		9/1/00	
DESIGNED	LDG.	APP'D	APP'D
DESIGN CK.	SAB	QUANTITIES	TRACED CK.
DETAIL CK.	DDG	QUAN. CK.	TRACE CK.

Plotted By : gdr
Plot File : I:\2009\09213\Standards\09213-standards-7e722.dgn
Plot Date : 9/16/2009