

CP*401 N 1,672,931.1762 E 1,681,112.0209
 Found 1/2" iron pipe in monument box at
 SW Cor. Sec. 33 T27S R2E - Pawnee St.
 Ctr. intersection of Webb Rd. & Pawnee St.

CP*402 Set #4 bar
 N 1,673,005.3900 E 1,681,027.2994
 flush NW quad, Webb Rd. & Pawnee St.
 W back of curb Webb Rd.
 N Back of curb Pawnee St.

CP*403 Found #4 bar w/R&B cap
 N 1,673,002.0309 E 1,681,771.5118
 N R/W Pawnee
 Ctr. Webb Rd.
 Ctr. concrete drive

660' ± E
 36' ± E

LEGEND

- 23' Traffic Signal Pole with Mast Arm & Length
- Traffic Signal Pedestal
- Traffic Signal Head
- Traffic Signal Head with Backplate
- Video Detection Camera
- Pedestrian Signal Head
- Controller with Pad
- Service Box (Exist.)
- R10-12 Sign
- Rigid Galvanized Conduit (RGC)
- Signal Phase
- Signal Pole Reference Number
- Video Detection Camera Reference Number
- Street Name Sign
- Meter and Enclosure
- D(Phase) Detector Zone
- Reconstruct Wheelchair Ramp (in accordance with current ADA Accessibility Requirements) (See Sh. No. 7)
- Note: Existing Service Box & RGC to remain for Contractor's installation of electrical wires.
- Proposed 4" Concrete Sidewalk Extension (Shall abut to Traffic Signal Pole/Pedestal to provide access to Pushbutton)

DETECTOR SUMMARY

CAMERA NO.	DETECTION ZONE	MODE	SIZE (LxW)	PHASE CALLED	PHASE EXTENDED	DELAY/STRETCH TIMER	INITIAL SETTING (SEC.)
1	D1-1	Presence	60x6	1	1	-	-
1	D6-1	Pulse	6x6	6	6	S	1
1	D6-2	Pulse	6x6	6	6	S	1
1	D6-3	Presence	60x6	6	6	-	-
1	D6-4	Pulse	6x6	6	6	S	1
1	D6-5	Pulse	6x6	6	6	S	1
1	D6-6	Presence	60x6	6	6	-	-
2	D4-1	Pulse	6x6	4	4	S	1
2	D4-2	Pulse	6x6	4	4	S	1
2	D4-3	Presence	60x6	4	4	-	-
2	D4-4	Pulse	6x6	4	4	S	1
2	D4-5	Pulse	6x6	4	4	S	1
2	D4-6	Presence	60x6	4	4	-	-
2	D7-1	Presence	60x6	7	7	-	-
3	D5-1	Presence	60x6	5	5	-	-
3	D2-1	Pulse	6x6	2	2	S	1
3	D2-2	Pulse	6x6	2	2	S	1
3	D2-3	Presence	60x6	2	2	-	-
3	D2-4	Pulse	6x6	2	2	S	1
3	D2-5	Pulse	6x6	2	2	S	1
3	D2-6	Presence	60x6	2	2	-	-
4	D3-1	Presence	60x6	3	3	-	-
4	D8-1	Pulse	6x6	8	8	S	1
4	D8-2	Pulse	6x6	8	8	S	1
4	D8-3	Presence	60x6	8	8	-	-
4	D8-4	Pulse	6x6	8	8	S	1
4	D8-5	Pulse	6x6	8	8	S	1
4	D8-6	Presence	60x6	8	8	-	-

Detector Summary reflects initial operation.

FUNCTION TABLE

FUNCTION	PHASE							
	1	2	3	4	5	6	7	8
VEHICLE RECALL	-	X	-	-	-	X	-	-
PED RECALL	-	-	-	-	-	-	-	-
RED LOCK	-	-	-	-	-	-	-	-
YELLOW LOCK	X	-	X	X	X	-	X	X
PERMIT	X	X	X	X	X	X	X	X
PED PHASES	-	X	-	X	-	X	-	X
LEAD PHASES	X	-	X	-	X	-	X	-
DOUBLE ENTRY	-	X	-	X	-	X	-	X
SEQUENTIAL TIMING	-	-	-	-	-	-	-	-
START-UP YELLOW	-	-	X	-	-	-	-	X
OVERLAP A	-	-	-	-	-	-	-	-
OVERLAP B	-	-	-	-	-	-	-	-
OVERLAP C	-	-	-	-	-	-	-	-
OVERLAP D	-	-	-	-	-	-	-	-
EXCLUSIVE	-	-	-	-	-	-	-	-
SIMULTANEOUS GAP	-	-	-	-	-	-	-	-

Function Table reflects initial operation.

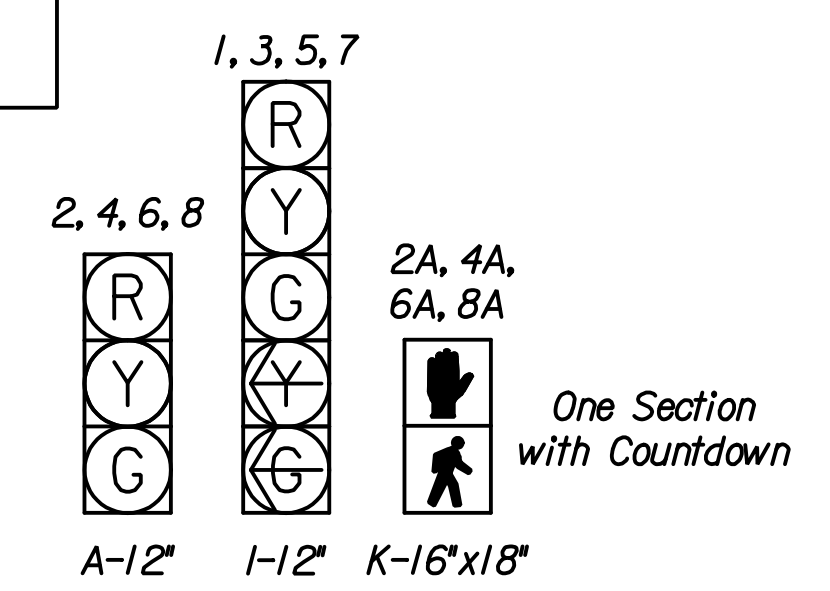
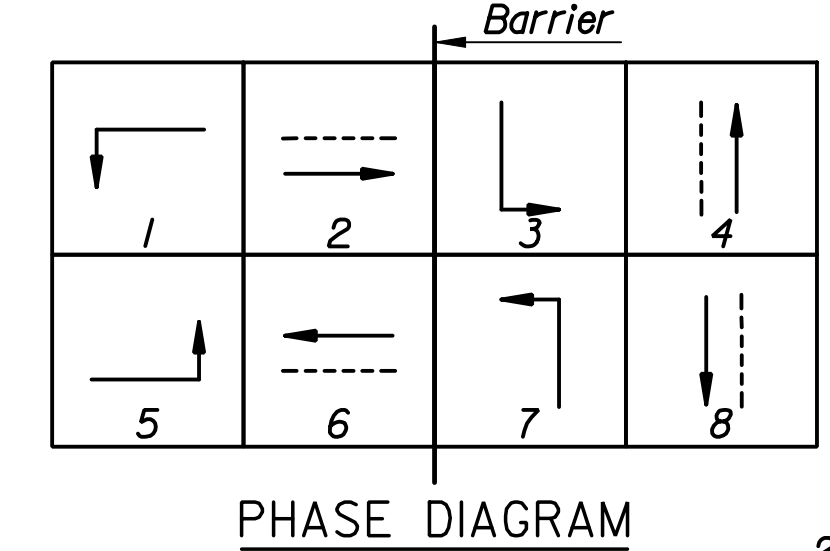
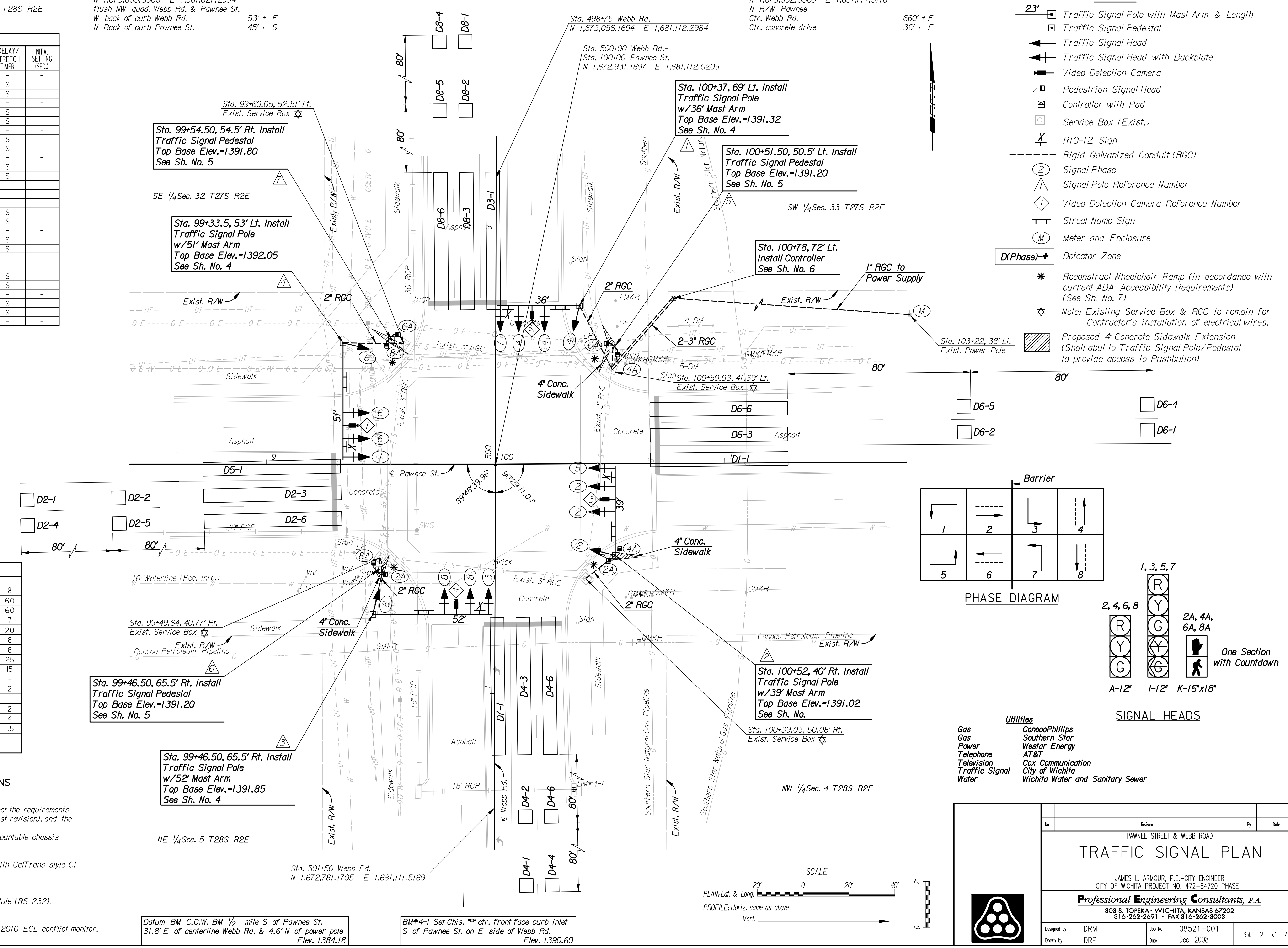
PHASE TIMING

FUNCTION	PHASE							
	1	2	3	4	5	6	7	8
MAX. I	30	60	30	60	30	60	30	60
MAX. II/HFDW	30	60	30	60	30	60	30	60
WALK	-	7	-	7	-	7	-	7
FLASH DW	-	20	-	20	-	20	-	20
MAX. INITIAL	6	8	6	8	6	8	6	8
MIN. GREEN	5	8	5	8	5	8	5	8
T B R	1	25	1	25	1	25	1	25
T T R	1	15	1	15	1	15	1	15
OBSERVE GAP	-	-	-	-	-	-	-	-
PASSAGE	1	2	1	2	1	2	1	2
MIN. GAP	1	1	1	1	1	1	1	1
ADDED ACTUATION	1	2	1	2	1	2	1	2
YELLOW	3.0	4	3.0	4	3.0	4	3.0	4
RED CLEAR	1.0	1.5	1.0	1.5	1.0	1.5	1.0	1.5
RED REVERT	-	-	-	-	-	-	-	-
WALK II	-	-	-	-	-	-	-	-

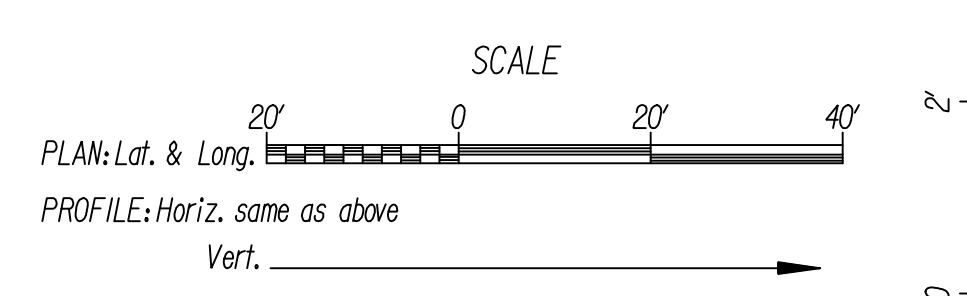
Phase Timing reflects initial operation.

**EQUIPMENT SPECIFICATIONS
2070 CONTROLLER**

- A. Controller Unit: The 2070L controller supplied shall meet the requirements outlined in CalTrans TEES 2002 (latest revision), and the following requirements:
- The 2070L controller shall have a 19" EIA rack mountable chassis (mated to the 170 cabinet).
 - 2070-1B CPU module with RJ-45 Ethernet port.
 - 2070-2A CI field I/O module for compatibility with CalTrans style CI connector.
 - 2070-3B 8X40 front panel with LCD display.
 - 2070-4A 10 amp power supply.
 - 2070-7A asynchronous serial communications module (RS-232).
 - Any unused slot position shall have a cover plate.
- B. Conflict Monitor: The Conflict Monitor supplied shall be 2010 ECL conflict monitor.



- Utilities**
- Gas: ConocoPhillips, Southern Star, Westar Energy
 - Power: AT&T, Cox Communication
 - Telephone: City of Wichita
 - Television: Wichita Water and Sanitary Sewer
 - Traffic Signal: Wichita Water and Sanitary Sewer
 - Water: Wichita Water and Sanitary Sewer



Datum BM C.O.W. BM 1/2 mile S of Pawnee St.
 31.8' E of centerline Webb Rd. & 4.6' N of power pole
 Elev. 1384.18

BM#4-1 Set Chis. "d" ctr. front face curb inlet
 S of Pawnee St. on E side of Webb Rd.
 Elev. 1390.60

Revision: _____ By: _____ Date: _____

PAWNEE STREET & WEBB ROAD

TRAFFIC SIGNAL PLAN

JAMES L. ARMOUR, P.E. - CITY ENGINEER
 CITY OF WICHITA PROJECT NO. 472-84720 PHASE I

Professional Engineering Consultants, P.A.
 303 S. TOPEKA • WICHITA, KANSAS 67202
 316-262-2691 • FAX 316-262-3003

Designed by: DRM Job No.: 08521-001
 Drawn by: DRP Date: Dec. 2008 Sht. 2 of 7

DSNR: 01/2008/08521-001/PLAN/08521-1-Pawnee.dgn
 DRP OPER: DRP SCALE: 1"=20'
 LAST REV: 9-11-2008 BY: drp