

BENCHMARK:
 "□" Chiseled on Top of Curb
 along East Property line
 extended North.
 Elev. = 1397.57 (NGVD 29)

W.L. Sta. 0+00.00, Begin Line 2 =
 B.L. Sta. 2+43.77, 109.93' Lt.
 Top Existing 8" Water Line.
 1-8"x8" Tapping Sleeve.
 1-8" Tapping Valve W/Valve Box
 To Be Furnished & Installed By
 The City Of Wichita Water Dept.
 (Contractor To Reimburse Water
 Dept. For Tapping Sleeve, Valve &
 Installation \$1830.00.)
 Valve Box Elevation = 1400.70
 Extend 8" Water Line Southeast.

10.00 L.F. 8" D.I.C.L. Pipe
 W.L. Sta. 0+10.00, Line 1 =
 B.L. Sta. 2+43.76, 99.93' Lt.
 1 - 8" C.I.M.J. 45° Bend

120.19 L.F. 8" Pipe

W.L. Sta. 1+30.19, Line 1 =
 B.L. Sta. 3+28.80, 15.00' Lt.
 1 - 8" C.I.M.J. 45° Bend

191.05 L.F. 8" Pipe
 W.L. Sta. 3+21.24, Line 1 =
 B.L. Sta. 5+19.86, 15.00' Lt.
 1 - Fire Hydrant Assy.
 (L = 29') 18"
 Bury Line Elevation = 1398.00
 Valve Box Elevation = 1398.10

138.66 L.F. 8" Pipe
 W.L. Sta. 4+59.90, End Line 1 =
 B.L. Sta. 6+58.52, 15.00' Lt.
 1 - 8" Anch. Valve Assy.
 (Special Gate)
 Valve Box Elevation = 1396.50

20.00 L.F. 8" Pipe

W.L. Sta. 4+79.90, End Line 1 =
 B.L. Sta. 6+78.52, 15.00' Lt.
 1 - 2" Blowoff Assy.
 Valve Box Elevation = 1396.50

SHEFFIELD
 PLACE
 ADDITION

BROADMOOR AT
 21ST STREET
 ADDITION
 LOT 5, BLOCK 1

BROADMOOR AT
 21ST STREET
 ADDITION
 LOT 1, BLOCK 1

CHELSEA
 SQUARE
 2ND
 LOT 1,
 BLOCK 1

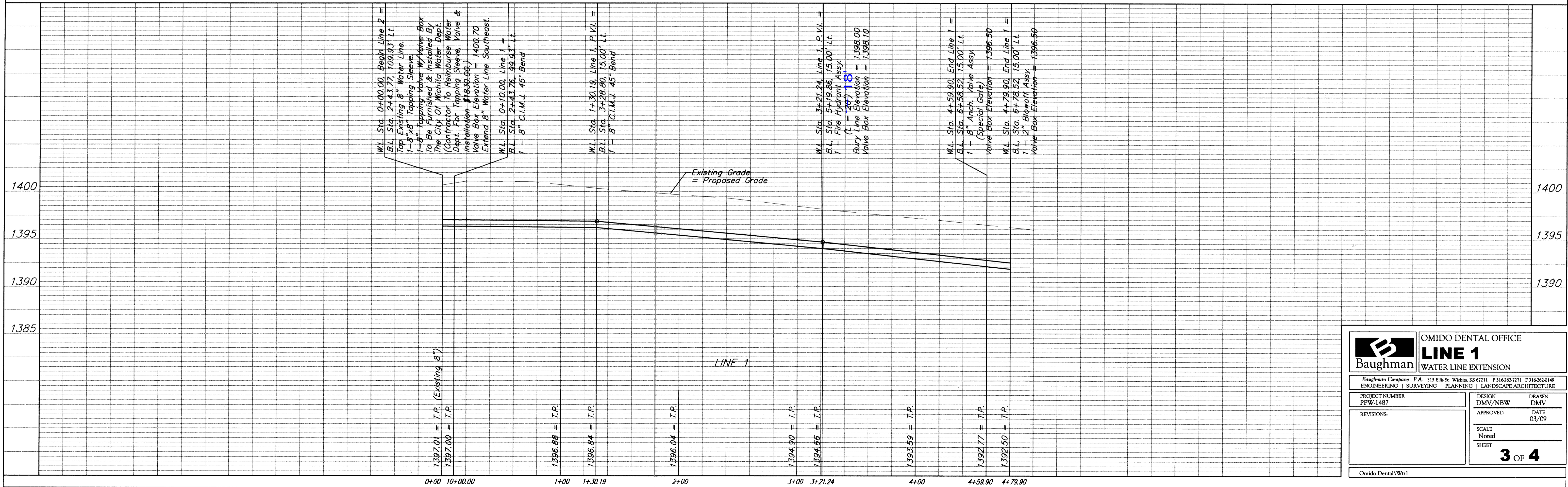
CHELSEA NORTH
 ADDITION
 LOT 2

Baseline Sta. 0+00 =
 NW Cor. Sheffield Place Addition

Baseline = North Line of Chelsea Square 2nd Addition

CAUTION!
 Existing SS
 and Telephone
 Line Crossings

Scale: 1" = 40' Horizontal
 1" = 5' Vertical
 • = Iron



	OMIDO DENTAL OFFICE	
	LINE 1	
WATER LINE EXTENSION		
Baughman Company, P.A. 315 Ellis St. Wichita, KS 67211 P 316-262-7271 F 316-262-0149		
ENGINEERING SURVEYING PLANNING LANDSCAPE ARCHITECTURE		
PROJECT NUMBER PPW-1487	DESIGN DMV/NBW	DRAWN DMV
REVISIONS:	APPROVED	DATE 03/09
SCALE Noted		<p style="text-align: center;">3 OF 4</p>
SHEET		
Omido Dental\Wtr1		