

CONSTRUCTION PLANS FOR WATER DISTRIBUTION SYSTEM IMPROVEMENTS

TO SERVE

HARRY STREET from ANDOVER ROAD to PHYLLIS LANE

THE CITY OF ANDOVER, KANSAS
BUTLER COUNTY, KANSAS

APPROVED AS NOTED
BY CITY ENGINEER OF WICHITA,
BY WICHITA WATER & SEWER DEPARTMENT,
& BY WICHITA FIRE DEPARTMENT

Water Mains (Pub Wks) *Julian Kellman 2-23-09*

Water Mains (W & S) *Ed Kelly 2/24/09*

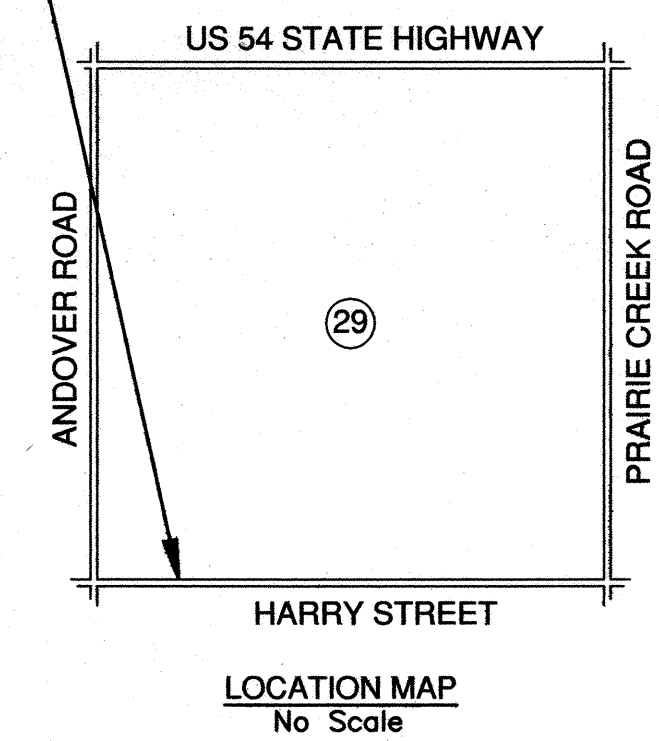
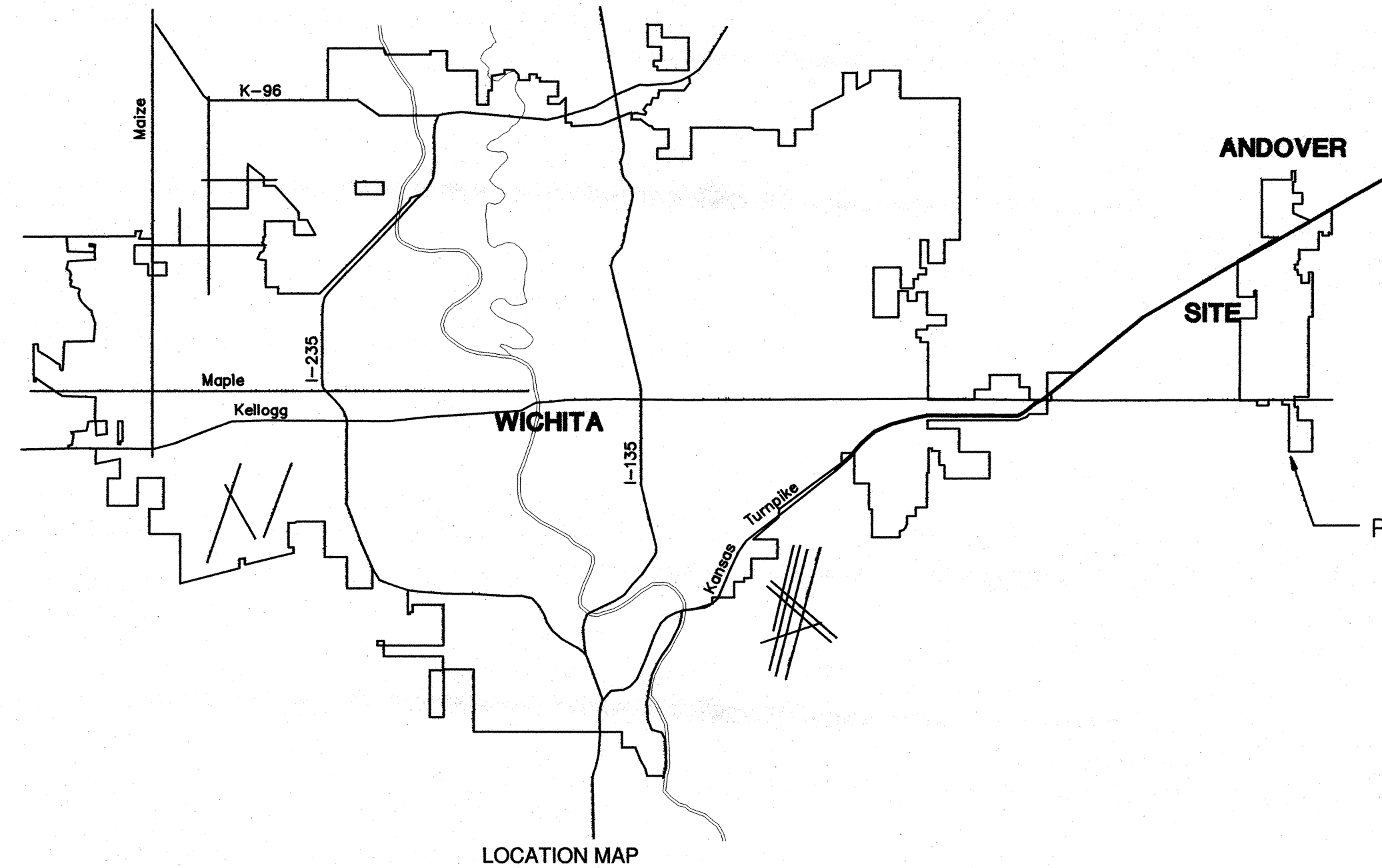
NOTE TO CONTRACTORS

Public Property

Inspection and testing for the waterline is to be provided by a Licensed Consulting Engineering Firm under contract with the Owner/Developer. Said inspection to be in accordance with the City of Wichita standard construction engineering practices and certified by a Professional Engineer Licensed in the state of Kansas. No work shall be performed in dedicated easements or public right-of-way by the Contractor without such inspection nor shall any work be commenced without written authorization by the City Engineer. All Construction and Materials shall comply with the City of Wichita Specifications and Standards (on file and available in the City Engineer's Office).

Private Property

Installation and testing for the fire protection line is to be performed by a City of Wichita licensed fire protection contractor in accordance with the fire codes as adopted by the City of Wichita. All materials and construction practices for the fire protection line shall comply with the fire codes as adopted by the City of Wichita (available from the City of Wichita Fire Department). The Contractor shall not commence work without notification and approval of the Wichita Fire Department. Inspection of the fire protection line is to be provided by a licensed Engineering Firm under contract with the Owner/Developer and the Fire Department. The Contractor shall not start work until the project inspector is assigned to the project and present on the site. Any work done without inspection will be required to be uncovered for inspection.



INDEX OF SHEETS

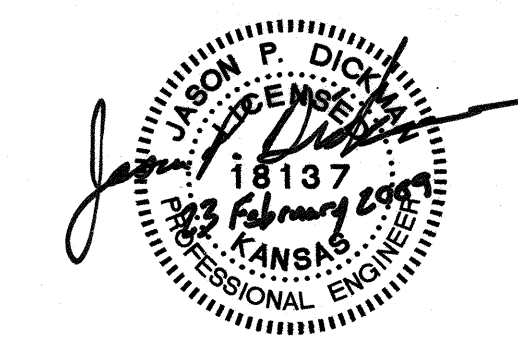
SHEET NO. 1	TITLE SHEET
SHEET NO. 2	KEY MAP & COORDINATE POINTS LIST
SHEET NO. 3	STANDARD DETAILS
SHEET NO. 4	PLAN PROFILE
SHEET NO. 5-9	EROSION CONTROL DETAILS
SHEET NO. 10-13	TRAFFIC CONTROL DETAILS

OCA NO. 607853
CITY OF WICHITA PROJECT NO. 1457-PPW
FEBRUARY 2009

PLANS PREPARED BY



POE & ASSOCIATES, INC.
CONSULTING ENGINEERS
5940 E. Central, Suite 200 Wichita, KS 67208-4242
Phone 316/685-4114 FAX 316/685-4444



RECORD DRAWING

Contractor: McCullough Excavation
Inspector: R. Messerli
pdf by: POE & ASSOCIATES, INC. 11-2-09

CLOW MEDALLION 4.5" SMJ 9" END
TYPE FIRE HYDRANT
2" CATHODIC TEST STATION
CLOW 12" R/W VALVE SMJ ENDS
MECHANICAL JOINT FITTINGS 12"
PVC AWWA C900 PIPE RUBBER GASKET
DUCTILE IRON PIPE CLASS 350 AWWA C153