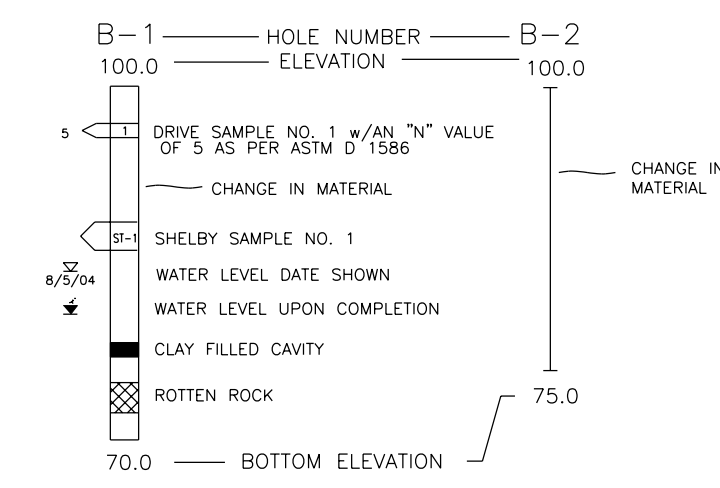


LEGEND



ABBREVIATIONS

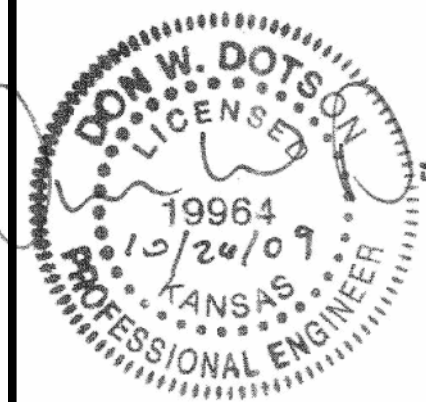
ABUND - ABUNDANT	GVL/Y - GRAVEL/LY	REF - REFUSAL
APPROX - APPROXIMATE	GYP - GYPSUM	RK - ROCK
ARG - ARGILLACEOUS	HD - HARD	RTN - ROTTEN
ASPH - ASPHALT	HYCB - HONEYCOMBED	RTS - ROOTS
AX - CORE DRILL SIZE	i - INITIAL WATER LEVEL	SAT - SATURATED
BD/S - BAND/S	JTD - JOINTED	SCATT - SCATTERED
BENT - BENTONITE	KSF - KIPS PER SQUARE FOOT	SD/Y - SAND/Y
BGS - BELOW GROUND	LAM - LAMINATED	SVRLY - SEVERELY
BL - BLUE	LW - LOST DRILL WATER	SEV - SEVERAL
BLDR/S - BOULDER/S	LEA - LEACHED	SH/Y - SHALE/Y
BLK - BLACK	LG - LARGE	SL - SLIGHTLY
BLSH - BLuish	LGT - LIGHT	SLSD - SLICKENSIDED
BP/S - BEDDING PLANE/S	LL - LIQUID LIMIT	SLT/Y - SILT/SILTY
BR - BROWN	LS - LIMESTONE	SM - SOME
BRECC - BRECCIATED	LSE - LOOSE	SML - SMALL
BRK/S - BRICK/S	LTL - LITTLE	S - SOFT
BRNSH - BROWNISH	LYS - LAYERS	SOFN - SOFTENED
BX/BQ - CORE DRILL SIZE	LZ - LENSES	SOLN - SOLUTION
C - COARSE	M - MEDIUM	SPLS - SAMPLE
CALC - CALCAREOUS	MATL - MATERIAL	SS - SANDSTONE
CAV/Y - CAVITY/CAVITIES	MAX - MAXIMUM	ST - STAINED
CBLs - CORES	MIC - MICACEOUS	STA - STATION
CEM - CEMENT/CEMENTED	MIN - MINIMUM	STKS - STREAKS
CHT/Y - CHERT/CHERTY	MINL - MINERAL	STRAT - STRATIFIED
CL/Y - CLAY/CLAYEY	MOD - MODERATELY	SURF - SURFACE
CNDS - CINDERS	MOTT - MOTTLED	T - TAN
CONC - CONCRETE	NX - CORE DRILL SIZE	TOR - TOP OF ROCK
CS - CRUSHED STONE	NODS - NODULES	TR/S - TRACE/TRACES
CSG - CASING	NUM - NUMEROUS	TSF - TONS PER SQUARE FOOT
D - DENSE/DENSELY	OCC - OCCASIONAL/OCCASIONALLY	USC - UNIFIED SOIL CLASSIFICATION
DEB - DEBRIS	ORG - ORGANIC	V - VERY
DEC - DECOMPOSED	OSBP/S - OPEN, STAINED BEDDING PLANE/S	VAR - VARIABLE/VARIABLY
DF/S - DIAGONAL FRACTURE/S	OSDF/S - OPEN, STAINED DIAGONAL FRACTURE/S	VEG - VEGETATION
DGA - DENSE GRADED AGGREGATE	OSLBP/S - OPEN, STAINED, LEACHED BEDDING PLANE/S	VF/S - VERTICAL FRACTURE/S
DISPL - DISPLACEMENT	OSLVF/S - OPEN, STAINED, LEACHED VERTICAL FRACTURE/S	W - % NATURAL MOISTURE CONTENT
DK - DARK	OVB - OVERBURDEN	w/ - WITH
DLG - DRILLING	PF - PARTLY FILLED	WB - WASHBOARD
DO - DITTO	PHOS - PHOSPHATIC	WD - WOOD
DOL - DOLOMITE	PI - PLASTICITY INDEX	WEA - WEATHERED
DWR - DRILL WATER RETAINED	POSS - POSSIBLE/POSSIBLY	WHT - WHITE
ELEV - ELEVATION	PL - PLASTIC LIMIT	WT - WEIGHT
EST - ESTIMATED	PP - POCKET PENETROMETER (TSF)	WTR - WATER
FRM - FIRM	PROB - PROBABLE/PROBABLY	XCPT - EXCEPT
FE - FERROUS	PROJ - PROJECTED	XLN - CRYSTALLINE
FM - FORMATION	PTG - PARTING	YEL - YELLOW
FOSS - FOSSILIFEROUS	PTY - PARTLY	YELSH - YELLOWISH
FRAC/S - FRACTURE/S	PTD - PITTED	ZN/S - ZONE/S
FRAG/S - FRAGMENT/S	PZ - PIEZOMETER	gm - MOIST UNIT WEIGHT IN PCF
GR - GRAY	RDSH - REDDISH	qu - UNCONFINED COMPRESSIVE STRENGTH IN KSF
GRN - GREEN	RECY - RECOVERY	
GRND - GRAINED		
GRNSH - GREENISH		
GRSH - GRAYISH		

ameco
 AMEC Earth & Environmental, Inc.
 1129 SW Wensaker
 Topeka, Kansas 66604
 Phone: (785) 272-6830
 Fax: (785) 272-6878



LEVEE P-105
 WICHITA-VALLEY CENTER LOCAL
 FLOOD PROTECTION PROJECT
 WICHITA, KANSAS

PREPARED FOR
 THE CITY OF WICHITA, KANSAS
 455 N. Main
 Wichita, KS 67202



DESIGNED BY: Don W. Dotson, P.E.
 DATE: 2008/Oct/26
 DWN BY: Staff
 CKD BY: DWD
 APP BY: MG

FILE NAME: 561500000-GI-105.dgn
 AMEC PROJ. NO. 5-6150-0000

LEVEE P
 SOIL BORING
 LOGS
G-1.05
 SHEET 6 OF 66

THE BORING LOGS SHOWN DEPICT SUBSURFACE CONDITIONS ONLY AT THE SPECIFIC LOCATIONS DRILLED AND AT THE PARTICULAR TIMES WHICH MAY BE DESIGNATED ON THE LOGS. SUBSURFACE CONDITIONS AT OTHER LOCATIONS MAY DIFFER FROM CONDITIONS OCCURRING AT THESE BORING LOCATION PLANS. ALSO, THE PASSAGE OF TIME MAY RESULT IN A CHANGING IN THE SUBSURFACE CONDITIONS AT THE BORING LOCATION PLAN DRILLED.