

STATE	PROJECT NO.	YEAR	SHEET NO.	TOTAL SHEETS
KANSAS				

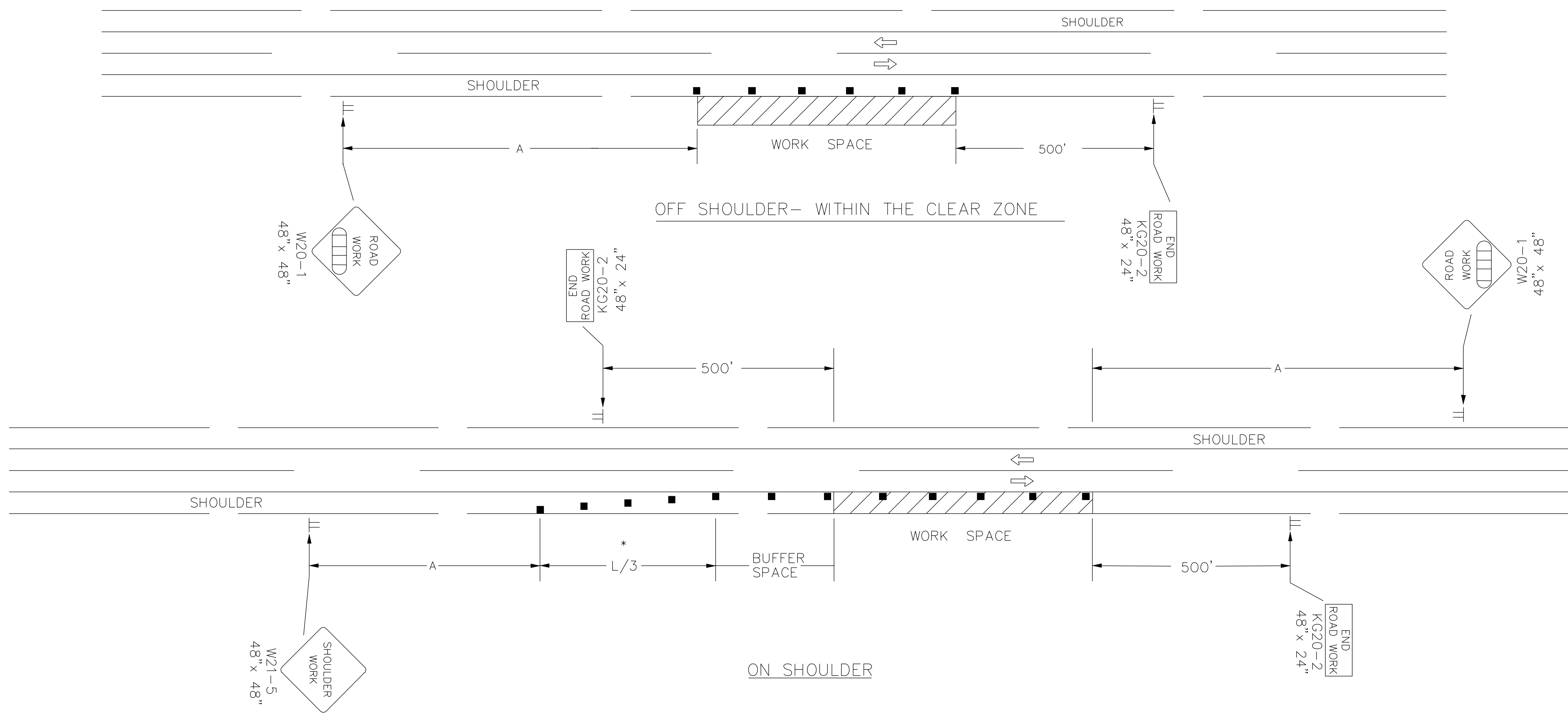
DATE	APPR
DESCRIPTION	MARK

REFER TO STD. TE710 FOR ADDITIONAL INFORMATION ON TEMPORARY TRAFFIC CONTROL SIGNS AND SIGN SPACING.
 REFER TO STD. TE702 FOR INFORMATION ON TAPERS AND CHANNELIZING DEVICES.
 REFER TO STD. TE700 FOR LENGTH OF BUFFER SPACE.

NOTE:

NO TRAFFIC CONTROL IS REQUIRED IF THE WORK SPACE IS LOCATED OUTSIDE OF THE CLEAR ZONE.

FOR OPERATIONS OF 60 MINUTES OR LESS, ALL SIGNS AND CHANNELIZING DEVICES MAY BE ELIMINATED IF A VEHICLE WITH HIGH-INTENSITY ROTATING, FLASHING, OSCILLATING, OR STROBE LIGHTS IS USED.



WHEN CONCRETE BARRIER SYSTEM IS USED, PORTABLE CHANNELIZING DEVICES ARE NOT NEEDED ALONG THE TANGENT BARRIER SECTION. DELINEATION ON THE BARRIER SYSTEM IS STILL REQUIRED. SEE RD622.

* OMIT TAPER IF PAVED SHOULDER IS LESS THAN 8' WIDE.

■ Channelizing Device
 □□□□ AHEAD, 1500 FT, OR 1 MILE

NO.	DATE	REVISIONS	BY	APP'D
3	8-8-07	G20-2 CHANGED TO KG20-2	M.B.	A.A.A.
2	12-29-05	UPDATED END ROAD WORK SIGN DESIGNATION	M.B.	A.A.A.
1	11-19-03	CHANGED BORDER	B.H.	S.A.B.

DESIGNED BY: Staff				DATE: 2008/Oct/26	
DWN BY: Staff		CKD BY: DWD		APP BY: MG	
FILE NAME: 561500000-C-TC-614.dgn					
KANSAS DEPARTMENT OF TRANSPORTATION					
TYPICAL TRAFFIC CONTROL WORK ON OR NEAR THE SHOULDER UNDIVIDED HIGHWAY (2 OR 4 LANE)					
TE720 9/1/00					
FHWA APPROVAL: 8-8-07		APP'D: Anthony A. Albroire			
DESIGNED: L.E.R.		DETAILED: B.A.H.		QUANTITIES: TRACED	
DESIGN CK: DETAIL CK.		QUAN. CK:		TRACE CK.	

ameco
 AMEC Earth & Environmental, Inc.
 1129 SW Wyanemaker
 Topeka, Kansas 66604
 Phone: (785) 272-6830
 Fax: (785) 272-6878



LEVEE P
 WICHITA-VALLEY CENTER LOCAL
 FLOOD PROTECTION PROJECT
 WICHITA, KANSAS
 PREPARED FOR
 THE CITY OF WICHITA, KANSAS
 455 N. Main
 Wichita, KS 67202



DESIGNED BY: Staff
 DATE: 2008/Oct/26
 CKD BY: DWD
 APP BY: MG
 FILE NAME: 561500000-C-TC-614.dgn
 AMEC PROJ. NO. 5-6150-0000
 LEVEE P
 TYPICAL
 WORK ON SHOULDER
TC-6.14
 SHEET 65 OF 85