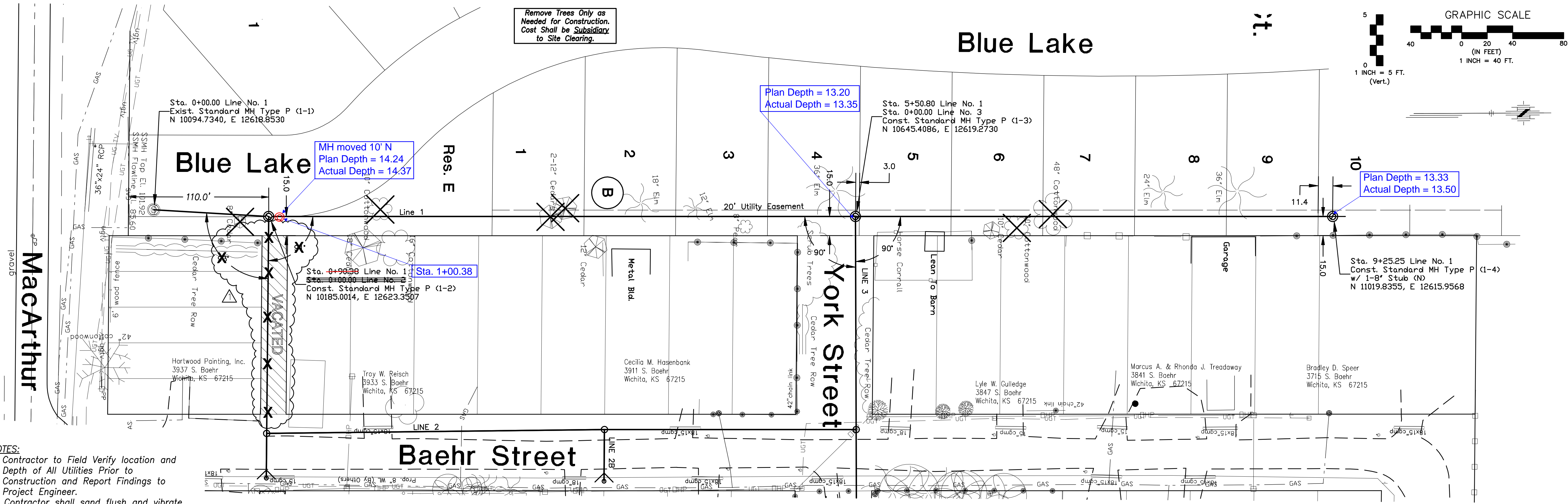
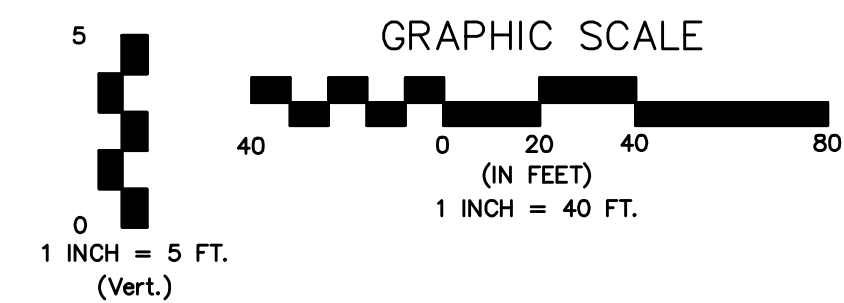
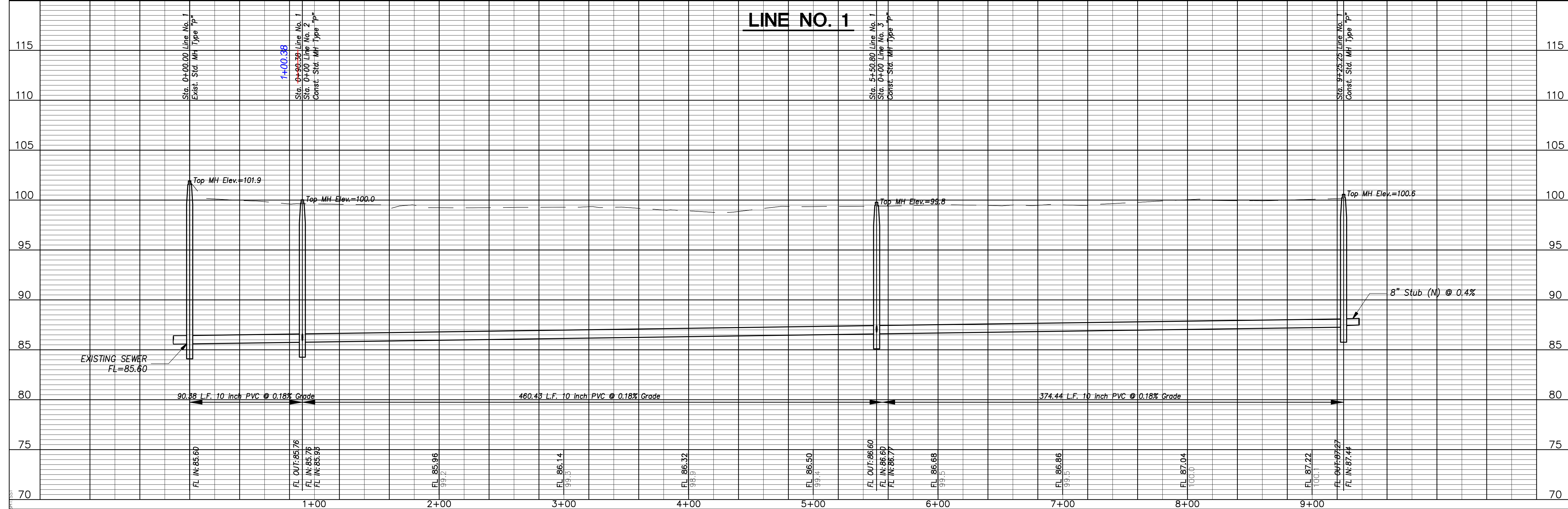


Remove Trees Only as Needed for Construction. Cost Shall be Subsidiary to Site Clearing.

Blue Lake



- NOTES:**
- Contractor to Field Verify location and Depth of All Utilities Prior to Construction and Report Findings to Project Engineer.
 - Contractor shall sand flush and vibrate all gravel road and driveway crossings.



POE & ASSOCIATES, INC.
CONSULTING ENGINEERS
5940 E. Central, Suite 200 - Wichita, KS 67208-4242
Phone 316/685-4114 - FAX 316/685-4444

CITY OF WICHITA, KANSAS
JAMES ARMOUR, P.E. - CITY ENGINEER
Proj.# 468-83980 O.C.A.# 144113

FINAL

Designed By: J. Dickman
Drawn By: M. Tucker
Poe Job No.: 1805A
Date: May 2008

Sheet 2 of 18