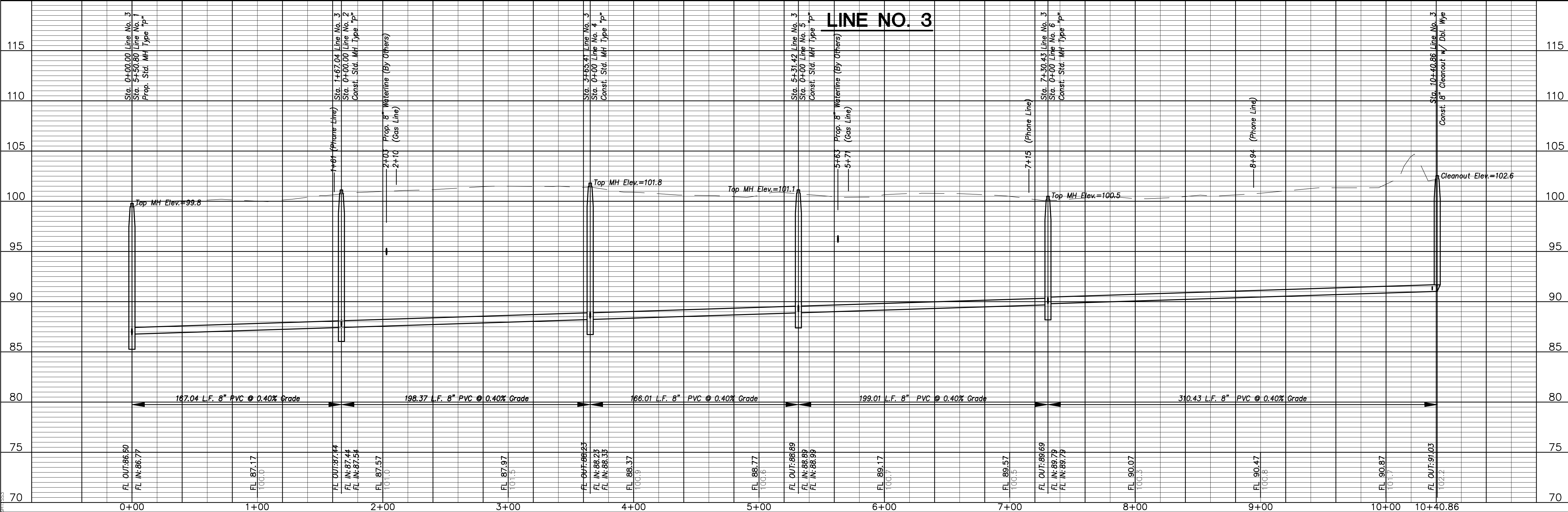


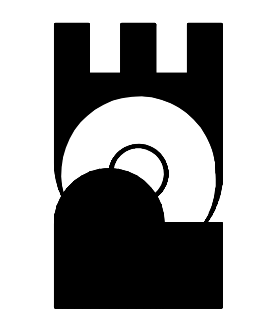
- NOTES:**
- Contractor to Field Verify location and Depth of All Utilities Prior to Construction and Report Findings to Project Engineer.
 - Contractor shall sand flush and vibrate all gravel road and driveway crossings.



No.	Date	By	Approved	Revision
1	1/23/2009	JPD	JMU	Changed Location of Sanitary Sewer Line No. 2

OATVILLE ADDITION
 SANITARY SEWER IMPROVEMENTS
 LINE NO. 3
 CITY OF WICHITA, KANSAS
 JAMES ARMOUR, P.E. - CITY ENGINEER
 Proj.# 468-83980 O.C.A.# 74413

POE & ASSOCIATES, INC.
 CONSULTING ENGINEERS
 5940 E Central, Suite 200 - Wichita, KS 67208-4242
 Phone 316/685-4114 - FAX 316/685-4444



FINAL
 Designed By: J. Dickman
 Drawn By: M. Tucker
 P.O. Job No.: 1805A
 Date: May 2008
 Sheet 4 of 18