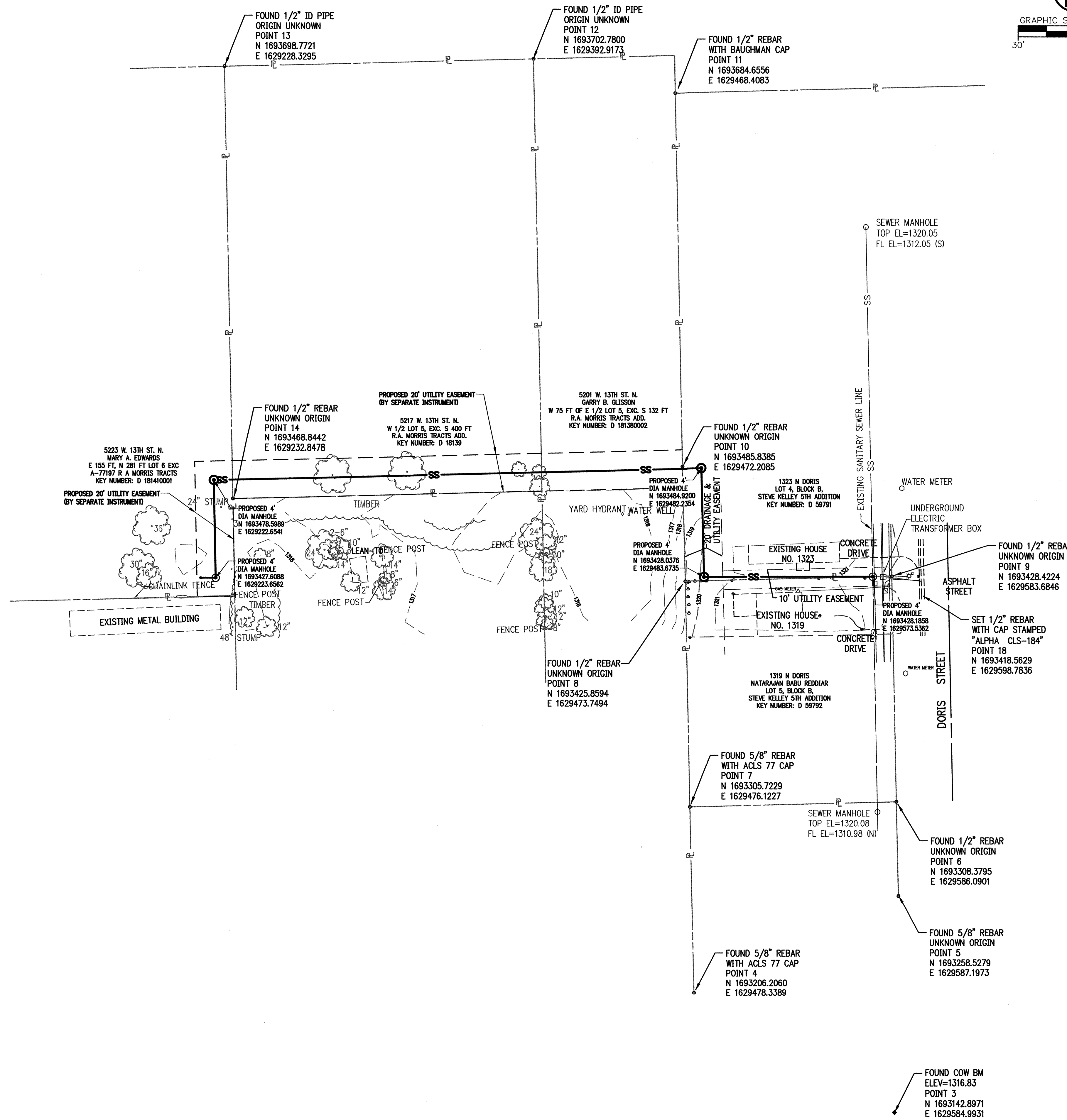
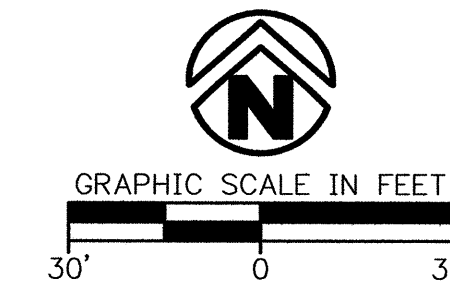




KS: 1-800-344-7233
WICHITA: 316-687-2470

C.O.W. BENCHMARK:
DISC @ CENTER LINE OF CURTIS EXTENDED, 2' S.
OF S. PROPERTY LINE OF I-235 R/W, 21' W. OF
POLE LINE EXTENDED SOUTH, 74' NNW OF STREET
LIGHT POLE, 68' W. OF CHAIN LINK FENCE CORNER.
ELEVATION=1316.55

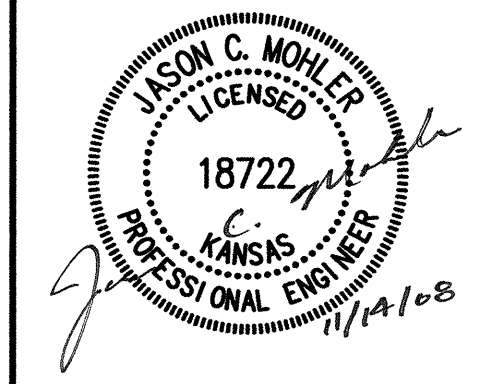


LAYOUT1

LAYOUT TAB

Control Plan.dwg

DRAWING FILE NAME AND LOCATION:
LAST SAVED BY: CW3002 11/13/2008 9:58:24 AM
PLOTTED BY: CHRIS WINKLER (ONLY VALID ON HARD COPY)
© 2007 Craffton, Tull, Sparks & Associates, Inc.



Craffton Tull Sparks
8200 E. 34th Street North, Bldg. 1600
Suite 1603, Wichita, KS 67226
316.634.6776 FAX: 316.634.6777
www.crafftontullsparks.com

architecture | engineering

SANITARY SEWER
IMPROVEMENTS
WICHITA, KANSAS
C.O.W. PROJ. NO.: 468 84016
ISSUED FOR CONSTRUCTION

Revision	

SURVEY CONTROL PLAN	
Drawn by CKW	Job Number 073004-00
Checked by JCM	Contact Person J. MOHLER
Date 11/14/08	Sheet Number 2