

BENCHMARKS:

BM #1: RR Spike in west face of 2nd power pole north of 29th St. N., east side of Greenwich Road.
Elev. = 1388.93

BM #2: RR Spike in west side power pole, east side of Greenwich Road, north side of drive to House #3150.
Elev. = 1398.38

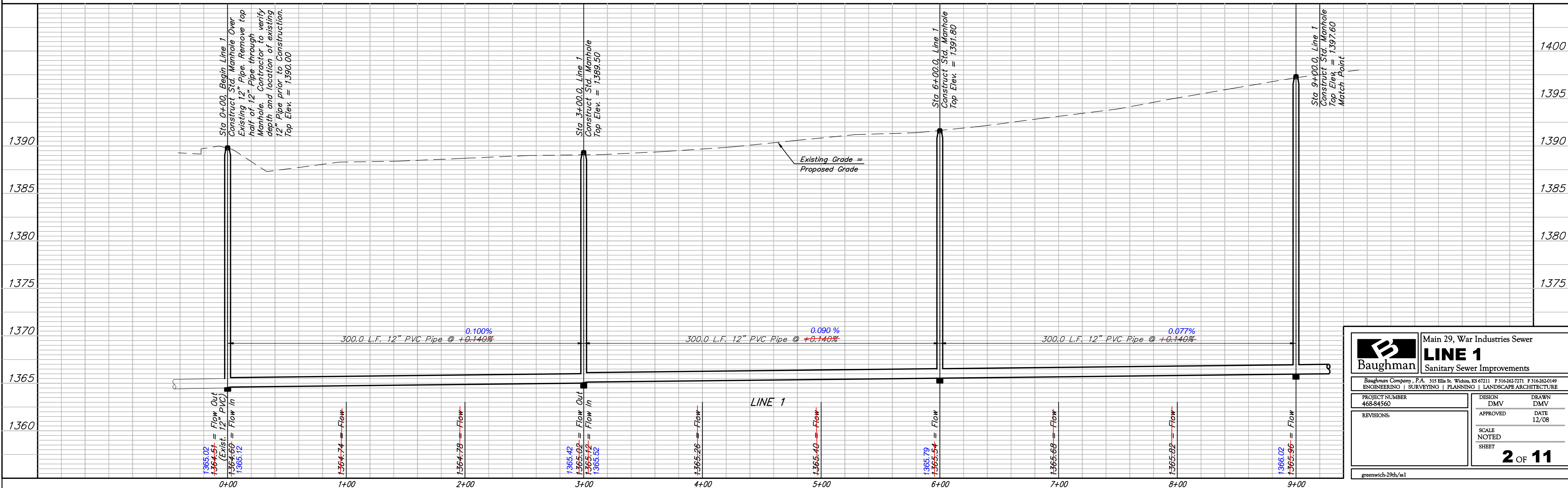
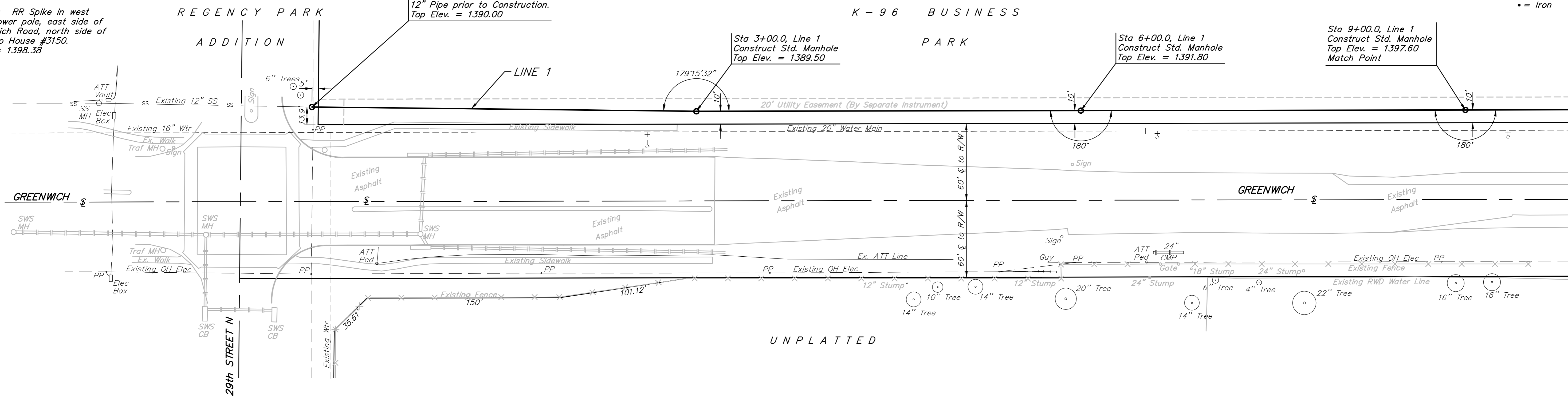
Sta 0+00, Begin Line 1
Construct Std. Manhole Over Existing 12" Pipe. Remove top half of 12" Pipe through Manhole. Contractor to verify depth and location of existing 12" Pipe prior to Construction.
Top Elev. = 1390.00

Sta 3+00.0, Line 1
Construct Std. Manhole
Top Elev. = 1389.50

Sta 6+00.0, Line 1
Construct Std. Manhole
Top Elev. = 1391.80

Sta 9+00.0, Line 1
Construct Std. Manhole
Top Elev. = 1397.60
Match Point

Scale: 1" = 40' Horizontal
1" = 5' Vertical
• = Iron



		Main 29, War Industries Sewer LINE 1 Sanitary Sewer Improvements	
<small>Baughman Company, P.A. 315 Ellis St. Wichita, KS 67211 F 316-262-7271 F 316-262-0149 ENGINEERING SURVEYING PLANNING LANDSCAPE ARCHITECTURE</small>			
PROJECT NUMBER 468-84560	DESIGN DMV	DRAWN DMV	DATE 12/08
REVISIONS:	APPROVED	SCALE NOTED	SHEET 2 OF 11
<small>greenwich-29th/ss1</small>			