

**BENCHMARKS:**

BM #1: RR Spike in west face of 2nd power pole north of 29th St. N., east side of Greenwich Road.  
Elev. = 1388.93

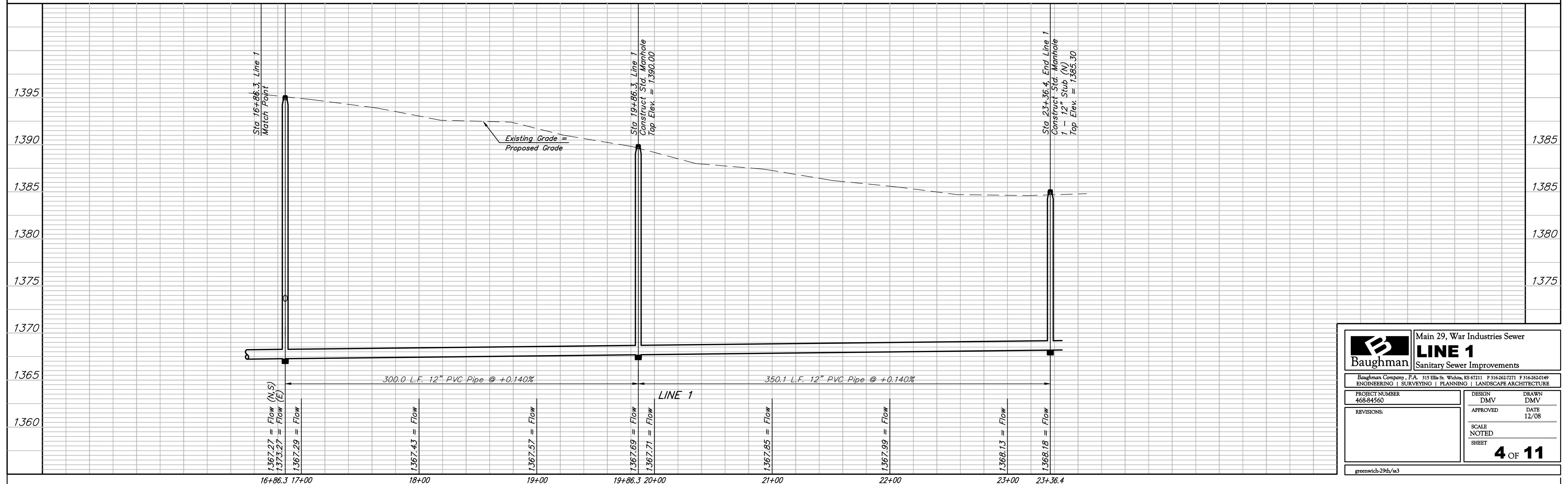
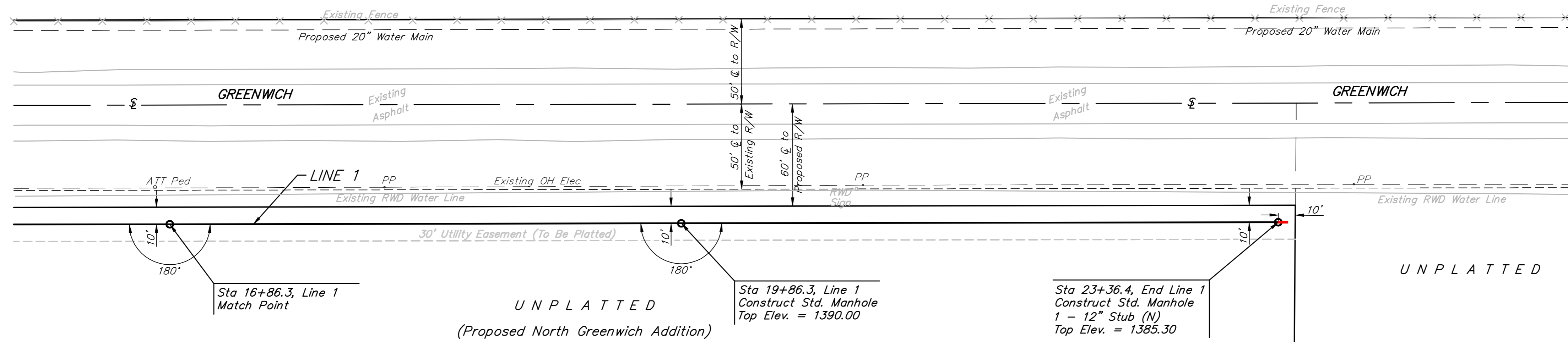
BM #2: RR Spike in west side power pole, east side of Greenwich Road, north side of drive to House #3150.  
Elev. = 1398.38



Scale: 1" = 40' Horizontal  
1" = 5' Vertical  
• = Iron

**UNPLATTED**

Trimmell, Ronald Etal  
c/o Thebert Trimmell  
1801 S. Mission  
Wichita, KS 67207



<b>Baughman</b>		Main 29, War Industries Sewer	
		<b>LINE 1</b>	
		Sanitary Sewer Improvements	
Baughman Company, P.A. 315 Ellis St. Wichita, KS 67211 F 3163637271 F 3162620149 ENGINEERING   SURVEYING   PLANNING   LANDSCAPE ARCHITECTURE			
PROJECT NUMBER 468-84560	DESIGN DMV	DRAWN DMV	DATE 12/08
REVISIONS:	APPROVED	SCALE NOTED	SHEET
			<b>4 OF 11</b>
greenwich-29th/s3			