

# STORM WATER AND SANITARY SEWER IMPROVEMENTS

TO SERVE

## EISENHOWER MIDDLE SCHOOL UNIFIED SCHOOL DISTRICT 265 GODDARD, KANSAS

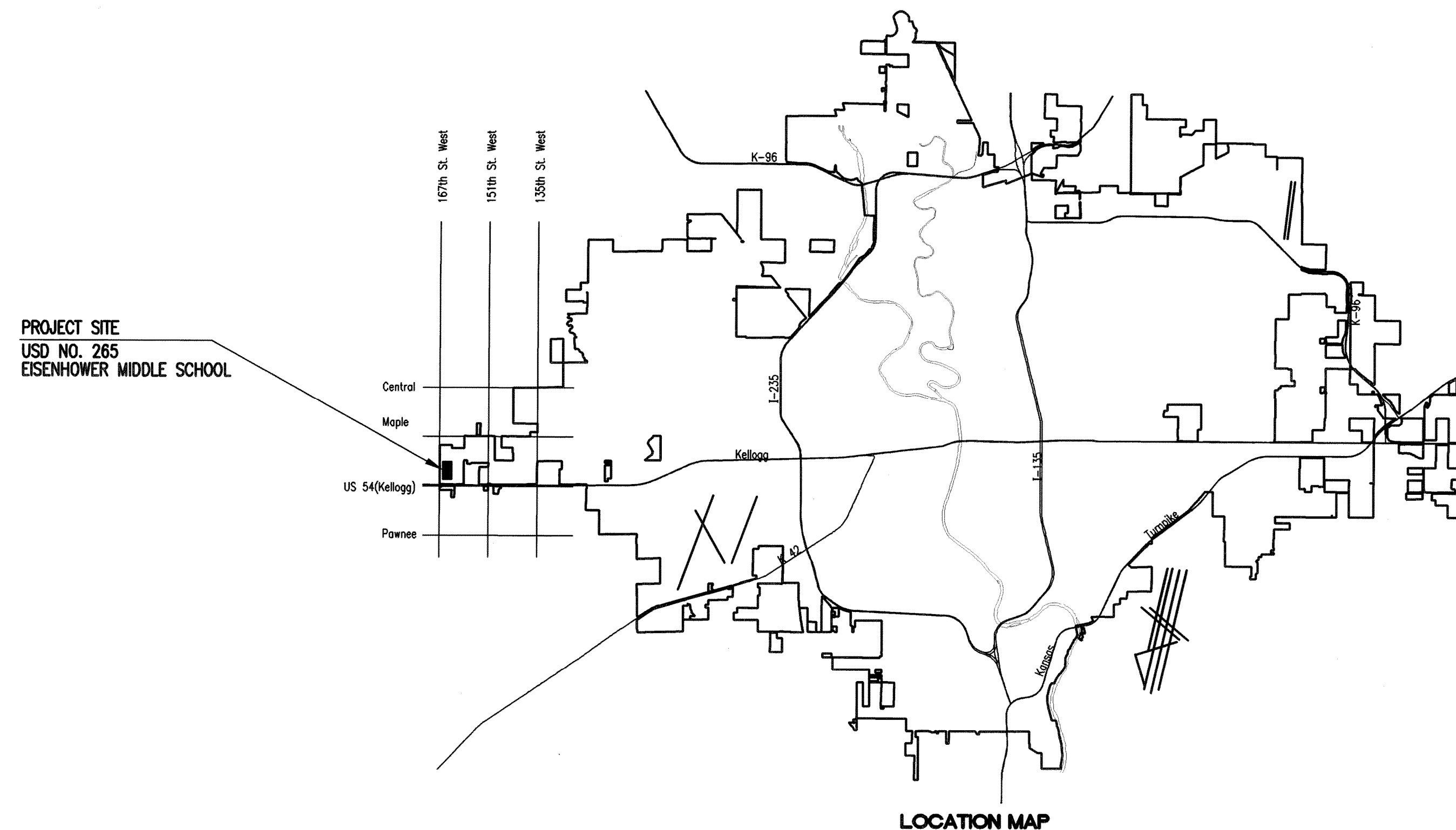
PRIVATE PROJECT NO. 1925 PPS (607861)

## CITY OF WICHITA, KANSAS

JAMES L. ARMOUR, P.E. - CITY ENGINEER

### INDEX OF SHEETS

C401	TITLE SHEET
C402	KEY MAP AND GENERAL NOTES
C403-C405	SANITARY & STORM WATER SEWER PLAN
C406-C407	STORM SEWER PROFILES
C408-C409	SANITARY SEWER PROFILES
C410	STANDARD TYPE 1A CURB INLET DETAILS
C411	STANDARD AREA INLET DETAILS
C412	MANHOLE ADJUSTMENT DETAILS
C413	STANDARD TYPE 'P' MANHOLE
C414	SHALLOW MANHOLE TYPE 'P' & 'C'
C415	NOT USED
C416	MANHOLE FRAME & COVER DETAILS
C417	VERTICAL RISER DETAILS
C501	SOIL EROSION BMP DETAILS COMMERCIAL
C502	SOIL EROSION BMP DETAILS
C503	SOIL EROSION BMP DETAILS



APPROVED AS NOTED  
By CITY ENGINEER OF WICHITA

Sanitary Sewers *Julianne Kellman 1-9-09*

Storm Sewers *Julianne Kellman 1-9-09*

Driveway Approaches \_\_\_\_\_

Paving \_\_\_\_\_

**NOTE TO CONTRACTOR**

INSPECTION AND TESTING FOR THIS PROJECT IS TO BE PROVIDED BY A LICENSED CONSULTING ENGINEERING FIRM CONTRACTED BY THE OWNER/DEVELOPER. SAID INSPECTION TO BE IN ACCORDANCE WITH THE CITY OF WICHITA STANDARD CONSTRUCTION ENGINEERING PRACTICES AND CERTIFIED BY A LICENSED PROFESSIONAL ENGINEER. NO WORK SHALL BE PERFORMED IN DEDICATED EASEMENTS OR PUBLIC RIGHT-OF-WAY BY THE CONTRACTOR UNTIL SUCH INSPECTION IS ARRANGED FOR AND REQUIRED BONDS HAVE BEEN SUBMITTED TO AND APPROVED BY THE CITY. NOR SHALL ANY WORK BE COMMENCED IN DEDICATED EASEMENTS OR PUBLIC RIGHT-OF-WAY WITHOUT WRITTEN AUTHORIZATION BY THE CITY ENGINEER. IMPROVEMENTS PERFORMED UNDER THIS PROJECT SHALL NOT BE ACCEPTED BY THE CITY UNTIL ALL APPLICABLE DOCUMENTATION HAS BEEN SUBMITTED TO THE CITY ENGINEER. THIS MAY INCLUDE: RECORD DRAWINGS, INSPECTION LOGS, TEST DOCUMENTATION, TV TAPES, AND A CERTIFICATE OF COMPLETION. THE ABOVE SHALL BE PERFORMED BY THE CONSULTING FIRM CONTRACTED TO INSPECT THIS PROJECT.

Release Date: 09/24/2009  
: APRosas 09/24/2009

AS -BUILT PLANS

Contractor: Nowak Construction  
Inspector: Robert Previtera, Reiss and Goodness Engineers  
.pdf by R.P., 7/24/2009

PROPOSED STORM WATER SEWER TO BE PRIVATELY OWNED AND MAINTAINED.

JANUARY 2009

PLANS PREPARED BY  
PROFESSIONAL ENGINEERING CONSULTANTS, P.A.  
ENGINEERS  
WICHITA, KANSAS



Saved 01-06-2009 4:41:26 PM by RW  
 Plot Scale: 1" = 100'-0" (1:12000)  
 C:\2008\0843\CHANGE\_ORDER\1925\1925-PPS-SIS\1925-PPS-Title\_Sheet.dwg

GENERAL NOTES

- ALL CONSTRUCTION AND MATERIALS TO COMPLY WITH CITY OF WICHITA SPECIFICATIONS AND STANDARDS.
- ALL ELEVATIONS SHOWN ARE U.S.G.S. DATUM.
- THE CONTRACTOR SHALL LIMIT THE EXTENT OF TRENCH TO REMAIN OPEN OVERNIGHT AND WEEKENDS TO LESS THAN 50 FEET.
- AT LEAST 72 HOURS PRIOR TO BEGINNING EXCAVATION (EXCLUDING WEEKENDS AND HOLIDAYS), THE CONTRACTOR SHALL CONTACT THE KANSAS ONE-CALL SYSTEM, A UTILITY LOCATION SERVICE, AT (316) 687-2470 TO REQUEST THE LOCAL UTILITY COMPANIES MARK ANY EXISTING LINES WITHIN THE PROJECT AREA.
- UNDERGROUND UTILITY SERVICE LINES AND OVERHEAD UTILITY POLE LINES ARE TO BE ADJUSTED AS NECESSARY BY OTHERS PRIOR TO CONSTRUCTION UNLESS THE PLANS SPECIFICALLY CALL FOR THEIR ADJUSTMENT BY THE CONTRACTOR OR UNLESS THE PLANS SPECIFICALLY IDENTIFY A UTILITY TO BE ADJUSTED BY ITS OWNER DURING CONSTRUCTION. EXISTING UTILITIES AND THEIR LOCATIONS, AS SHOWN ON THE PLANS, REPRESENT THE BEST INFORMATION OBTAINABLE FOR THE DESIGN. THE CONTRACTOR WILL BE REQUIRED TO WORK AROUND EXISTING UTILITIES WITHIN THE RIGHT-OF-WAY WHICH DO NOT CONFLICT WITH PROPOSED CONSTRUCTION.
- THE CONTRACTOR SHALL BE RESPONSIBLE FOR PRESERVING PROPERTY IRONS. THE CONTRACTOR WILL BE REQUIRED TO RE-ESTABLISH ANY PROPERTY IRONS WHICH ARE DAMAGED OR DESTROYED BY HIS CONSTRUCTION OPERATIONS. SUCH IRONS SHALL BE RE-ESTABLISHED BY A LICENSED LAND SURVEYOR IN ACCORDANCE WITH STATE LAWS.
- CONTRACTOR SHALL PROVIDE POSITIVE DRAINAGE AWAY FROM ALL MANHOLE COVERS.
- MANHOLES SHALL BE TYPE "P" MANHOLES. MANHOLES SHALL BE CONSTRUCTED IN ACCORDANCE WITH THE STANDARD SPECIFICATIONS AND THE STANDARD DETAIL DRAWINGS.
- RUBBLE FROM THE REMOVAL OF MISCELLANEOUS STRUCTURES INCLUDING ANY TREES REMOVED, TREE TRIMMINGS, AND EXCESS EXCAVATION WHICH IS TO BE WASTED SHALL BE DISPOSED OF ON SITES PROVIDED BY THE CONTRACTOR. THESE SITES SHALL ALSO BE PROVIDED BY THE ENGINEER AS TO SUITABILITY, APPEARANCE, AND SITE LOCATION. LOCATIONS THAT, IN THE OPINION OF THE ENGINEER, WILL LEAVE AN UNSIGHTLY APPEARANCE WILL NOT BE APPROVED. ALL DISPOSAL SITES MUST BE APPROVED BY THE KANSAS DEPARTMENT OF HEALTH AND ENVIRONMENT. MATERIAL EITHER STOCKPILED OR DISPOSED OF IN A FLOOD PLAIN WILL REQUIRE A KANSAS STATE BOARD OF AGRICULTURE PERMIT. ANY MATERIAL DUMPED IN WATERS OF THE UNITED STATES OR WETLANDS IS SUBJECT TO U.S. CORPS OF ENGINEERS PERMITTING REGULATIONS. ANY MATERIAL BURIED OR STOCKPILED BEYOND APPROVED CONSTRUCTION LIMITS MAY REQUIRE ARCHAEOLOGICAL INVESTIGATIONS UNLESS BURIED IN A PREVIOUSLY APPROVED DISPOSAL LOCATION.
- ALL APPROVED EXCESS EXCAVATION WHICH IS TO BE WASTED SHALL BE STOCKPILED WITHIN GODDARD SCHOOL 2ND ADDITION AT NO ADDITIONAL COST TO THE OWNER. STOCKPILE LOCATIONS SHALL BE AS DIRECTED BY THE DEVELOPER AND IN ACCORDANCE WITH GENERAL NOTE NO. 9 ABOVE.
- THE CONTRACTOR SHALL SEED ALL AREAS DISTURBED BY CONSTRUCTION ACTIVITIES WITH TEMPORARY RYE GRASS. RYE GRASS SEED SHALL BE PLANTED AT A MINIMUM RATE OF SIX (6) POUNDS PER ONE THOUSAND (1,000) SQUARE FEET. THIS TEMPORARY SEEDING MAY BE OMITTED ONLY IF OTHER SEEDING IS REQUIRED IN ACCORDANCE WITH GENERAL NOTE NO. 11 ABOVE. TEMPORARY SEEDING OR PERMANENT SEEDING/SODDING SHALL BE APPLIED WITHIN 14 DAYS AFTER THE AREA HAS BEEN DISTURBED.
- THE CONTRACTOR SHALL AVOID REMOVAL OR TRIMMING OF ANY TREES OR SHRUBS WHERE POSSIBLE. WHERE THE CONTRACTOR BELIEVES THE REMOVAL OR TRIMMING IS UNAVOIDABLE, HE SHALL COORDINATE SUCH WORK WITH THE ENGINEER.
- THE CONTRACTOR SHALL PREVENT ANY CONSTRUCTION DEBRIS FROM ENTERING THE EXISTING SANITARY SEWER DURING CONSTRUCTION.
- THE CONTRACTOR SHALL GIVE ALL PROPERTY OWNERS AND/OR TENANTS OF DEVELOPED PROPERTY ADJACENT TO THE CONSTRUCTION OF THIS PROJECT A MINIMUM OF TEN (10) DAYS ADVANCE NOTICE PRIOR TO START OF CONSTRUCTION.
- CONTRACTOR IS REQUIRED TO MAINTAIN CONTINUOUS FLOW OF SEWAGE IN EXISTING MAINS AT ALL TIMES.
- THE CONTRACTOR SHALL NOT BURY MANHOLES THAT HAVE RIM ELEVATIONS WHICH ARE LOWER THAN EXISTING GROUND AT THE MANHOLE. THE GROUND AROUND SUCH MANHOLES AND ALONG THE SEWER ALIGNMENT SHALL BE BACKFILLED TO THE APPROXIMATE ELEVATION OF THE PROPOSED GROUND ELEVATION SHOWN ON THE PLAN/PROFILE SHEETS. THE CONTRACTOR SHALL PROVIDE DRAINAGE AWAY FROM THESE MANHOLES AND SEWER LINES BY CONSTRUCTION OF TEMPORARY DITCHES OR SLOPING THE GROUND AS REQUIRED.
- THE CONTRACTOR SHALL PROVIDE MOUNDED EARTH AT MANHOLES AND CLEANOUTS THAT HAVE TOP ELEVATIONS GREATER THAN 1 FOOT ABOVE EXISTING GRADE, AS SHOWN ON THE PLANS.
- INTERURBAN TRAFFIC GENERATED OUTSIDE THE PROJECT AREA AND LOCAL BUSINESS OR RESIDENTIAL TRAFFIC GENERATED WITHIN THE PROJECT AREA ARE TO BE CARRIED THROUGH CONSTRUCTION AS FURTHER PROMULGATED BY PROJECT SPECIAL PROVISIONS. THE CONTRACTOR SHALL UTILIZE BARRICADES, SIGNS, GUARDS, AND FLAGMEN IN ACCORDANCE WITH THE MANUAL ON UNIFORM TRAFFIC CONTROL DEVICES.
- WHERE INDICATED IN THE PLANS, THE SANITARY/STORM SEWER EXCAVATION SHALL BE SAND FILLED AND FLUSHED (JETTED AND VIBRATED) WITH WATER PER THE REQUIREMENTS LISTED IN THE STANDARD SPECIFICATIONS FOR THE CITY OF WICHITA, UNLESS FLOWABLE FILL OR OTHER IMPROVED BACKFILL MATERIAL IS OTHERWISE SPECIFIED.
- THE CONTRACTOR SHALL OBTAIN A COPY OF THE APPROVED NOTICE OF INTENT FOR STORM WATER DISCHARGES FROM THE SITE AND MEET THE REQUIREMENTS OF THE PERMIT. THE CONTRACTOR SHALL INSTALL AND/OR MAINTAIN EROSION CONTROL MEASURES AS REQUIRED PER THE NOI. A COPY WILL BE PROVIDED TO THE CONTRACTOR UPON CONTRACT AWARD.

SCALE: 1"=150'

REECE FARMS ESTATES  
REECE ROAD

CENTER OF SEC. 27, T27S, R2W  
3/4" IRON PIPE

PROPOSED STORM WATER SEWER TO BE PRIVATELY OWNED AND MAINTAINED.

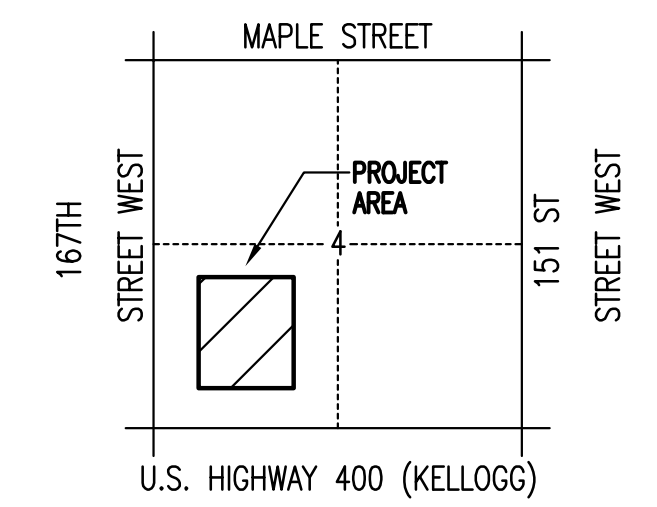
BENCHMARK LIST

BENCH MARK: CHISELED SQUARE ON WEST END OF WATER TOWER BASE, 100'S. AND 130' E. OF THE WEST QUARTER CORNER, SEC. 27, T27S, R2W.  
ELEV.=1433.38 (M.S.L.)

BENCH MARK: R&B BRASS DISK SET IN CONCRETE, 10' W. AND 1008' N. OF THE N.E. CORNER, SW1/4, SEC. 27, T27S, R2W.  
ELEV.=1418.67 (M.S.L.)

BENCH MARK: R&B BRASS DISK SET IN CONCRETE, 1658' W. AND 83' N. OF THE S.E. CORNER, SW1/4, SEC. 27, T27S, R2W.  
ELEV.=1416.56 (M.S.L.)

(SURVEY BY RUGGLES & BOHM P.A.)



VICINITY MAP

No.	Revision	By	Date

STORM WATER AND SANITARY SEWER IMPROVEMENTS  
EISENHOWER MIDDLE SCHOOL - USD 265  
GODDARD, KANSAS

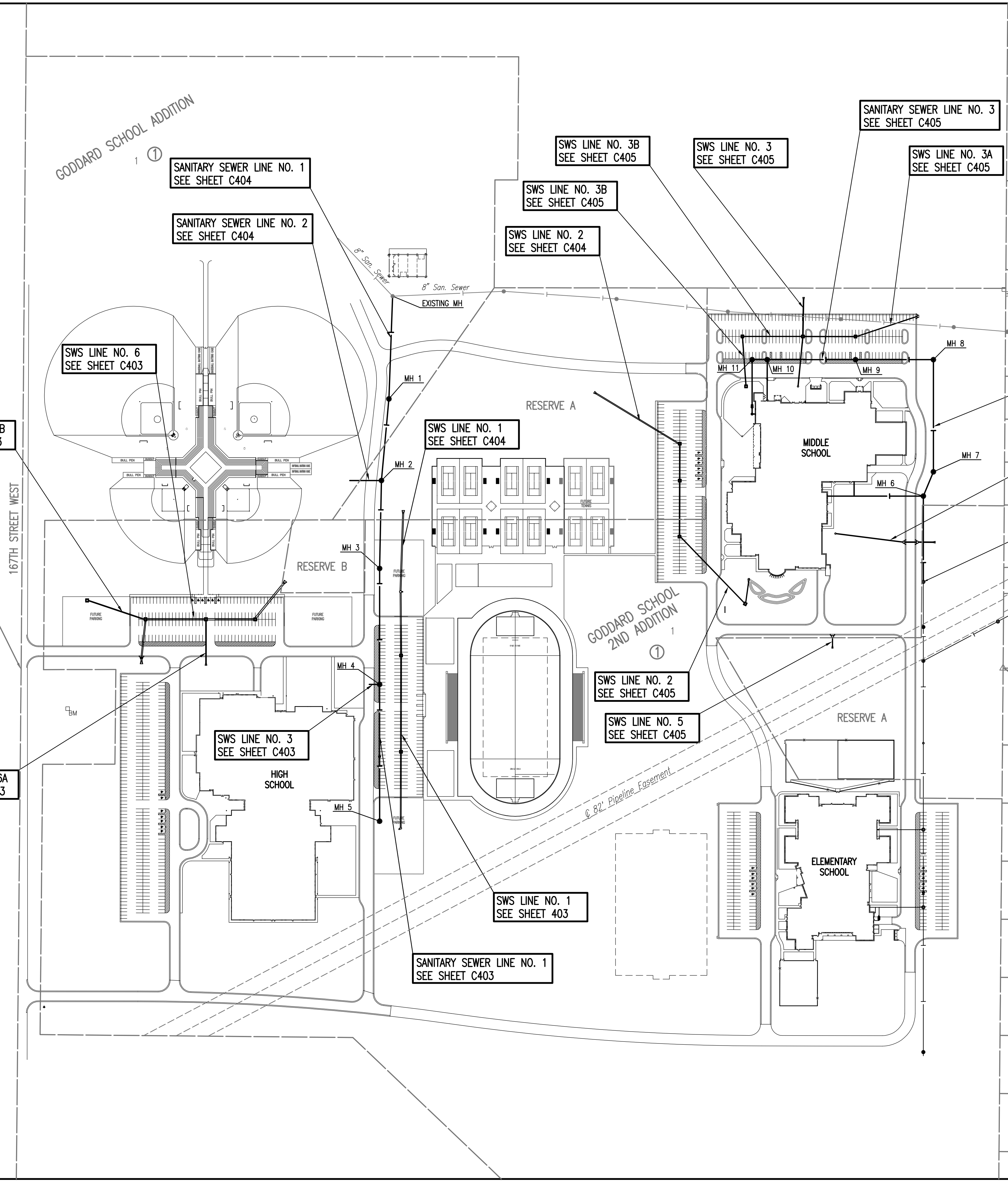
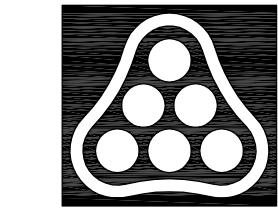
**KEY MAP AND GENERAL NOTES**

JAMES L. ARMOUR, P.E. - CITY ENGINEER  
PRIVATE PROJECT NO. 1925 PPS (607861)

**Professional Engineering Consultants, P.A.**  
303 S. TOPKA • WICHITA, KANSAS 67202  
316-262-2691 • FAX 316-262-3003

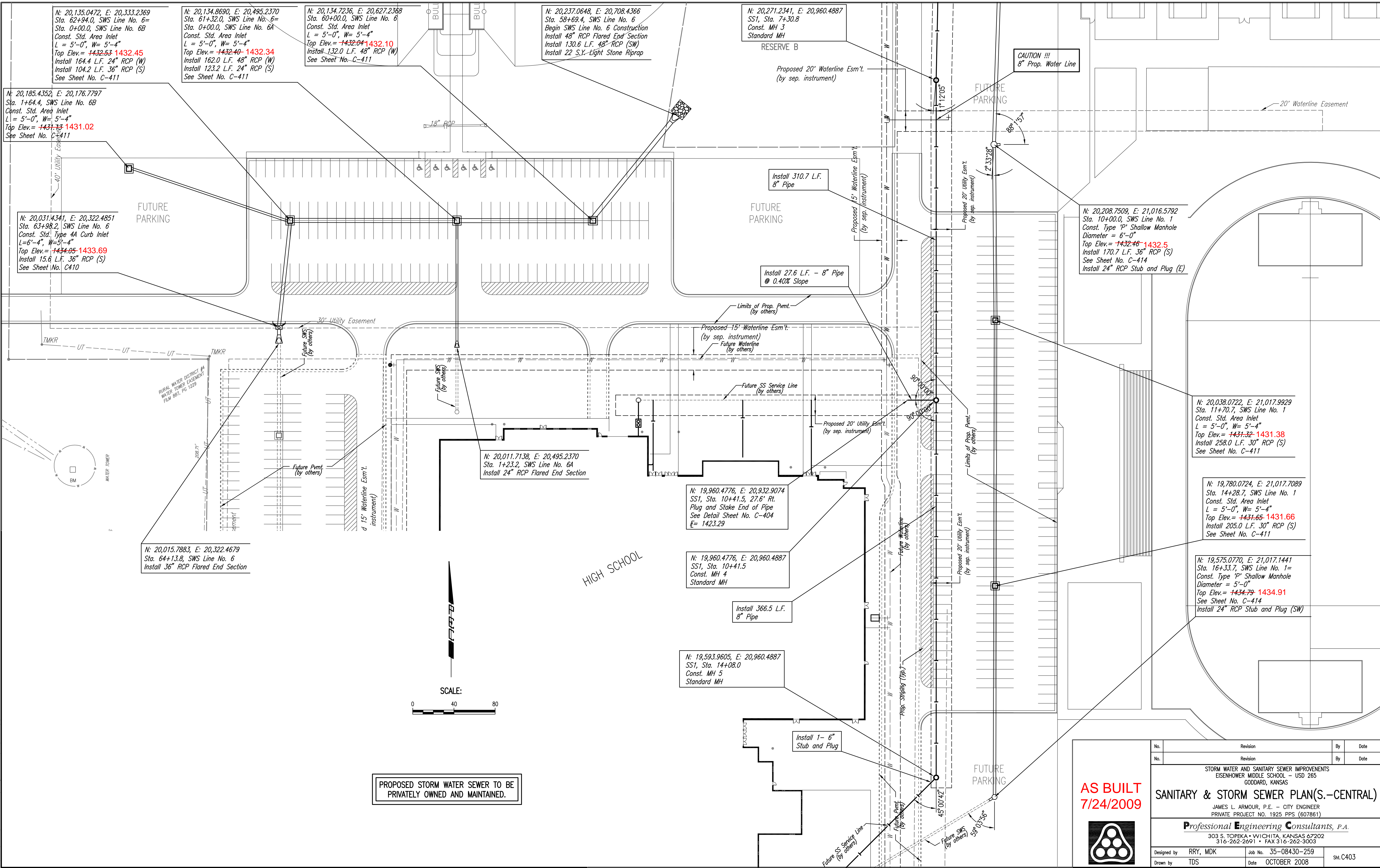
Designed by	RRY, MDK	Job No.	35-08430-259	Sht. C402
Drawn by	TDS	Date	OCTOBER 2008	

**AS BUILT**  
**7/24/2009**



Saved: 01-06-2009 8:20:14 AM by: R/W  
 Plot Scale: 1:150 01-21-2009 1:11:30 PM  
 Q:\2009\08430\CHANGE ORDER\1\PPS(SS-SWS)\08430-C-402-KEY MAP AND GENERAL NOTES

Saved: 01-06-2009 4:09:12 PM by: R/W  
 Plot Scale: 1"=40' 01-21-2009 11:10:00 PM  
 Q:\2009\08430\CHANGE ORDER\1\PPS(SS-SWS)\08430-C-403-SAN SEW AND SWS PLAN WEST



N: 20,135.0472, E: 20,333.2369  
 Sta. 62+94.0, SWS Line No. 6= Sta. 0+00.0, SWS Line No. 6B  
 Const. Std. Area Inlet  
 L = 5'-0", W = 5'-4"  
 Top Elev. = ~~1432.53~~ **1432.45**  
 Install 164.4 L.F. 24" RCP (W)  
 Install 104.2 L.F. 36" RCP (S)  
 See Sheet No. C-411

N: 20,134.8690, E: 20,495.2370  
 Sta. 61+32.0, SWS Line No. 6= Sta. 0+00.0, SWS Line No. 6A  
 Const. Std. Area Inlet  
 L = 5'-0", W = 5'-4"  
 Top Elev. = ~~1432.40~~ **1432.34**  
 Install 162.0 L.F. 48" RCP (W)  
 Install 123.2 L.F. 24" RCP (S)  
 See Sheet No. C-411

N: 20,134.7236, E: 20,627.2368  
 Sta. 60+00.0, SWS Line No. 6  
 Const. Std. Area Inlet  
 L = 5'-0", W = 5'-4"  
 Top Elev. = ~~1432.04~~ **1432.10**  
 Install 132.0 L.F. 48" RCP (W)  
 See Sheet No. C-411

N: 20,237.0648, E: 20,708.4366  
 Sta. 58+69.4, SWS Line No. 6  
 Begin SWS Line No. 6 Construction  
 Install 48" RCP Flared End Section  
 Install 130.6 L.F. 48" RCP (SW)  
 Install 22 S.Y. Light Stone Riprap

N: 20,271.2341, E: 20,960.4887  
 SSI, Sta. 7+30.8  
 Const. MH 3  
 Standard MH  
 RESERVE B

CAUTION !!!  
 8" Prop. Water Line

N: 20,185.4352, E: 20,176.7797  
 Sta. 1+64.4, SWS Line No. 6B  
 Const. Std. Area Inlet  
 L = 5'-0", W = 5'-4"  
 Top Elev. = ~~1431.13~~ **1431.02**  
 See Sheet No. C-411

N: 20,031.4341, E: 20,322.4851  
 Sta. 63+98.2, SWS Line No. 6  
 Const. Std. Type 4A Curb Inlet  
 L = 6'-4", W = 5'-4"  
 Top Elev. = ~~1434.05~~ **1433.69**  
 Install 15.6 L.F. 36" RCP (S)  
 See Sheet No. C410

N: 20,208.7509, E: 21,016.5792  
 Sta. 10+00.0, SWS Line No. 1  
 Const. Type 'P' Shallow Manhole  
 Diameter = 6'-0"  
 Top Elev. = ~~1432.46~~ **1432.5**  
 Install 170.7 L.F. 36" RCP (S)  
 See Sheet No. C-414  
 Install 24" RCP Stub and Plug (E)

N: 20,038.0722, E: 21,017.9929  
 Sta. 11+70.7, SWS Line No. 1  
 Const. Std. Area Inlet  
 L = 5'-0", W = 5'-4"  
 Top Elev. = ~~1431.32~~ **1431.38**  
 Install 258.0 L.F. 30" RCP (S)  
 See Sheet No. C-411

N: 19,780.0724, E: 21,017.7089  
 Sta. 14+28.7, SWS Line No. 1  
 Const. Std. Area Inlet  
 L = 5'-0", W = 5'-4"  
 Top Elev. = ~~1431.65~~ **1431.66**  
 Install 205.0 L.F. 30" RCP (S)  
 See Sheet No. C-411

N: 19,575.0770, E: 21,017.1441  
 Sta. 16+33.7, SWS Line No. 1= Const. Type 'P' Shallow Manhole  
 Diameter = 5'-0"  
 Top Elev. = ~~1434.79~~ **1434.91**  
 See Sheet No. C-414  
 Install 24" RCP Stub and Plug (SW)

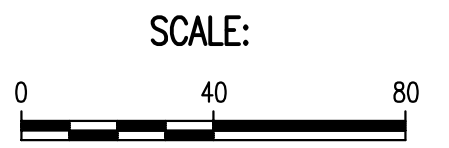
N: 20,015.7883, E: 20,322.4679  
 Sta. 64+13.8, SWS Line No. 6  
 Install 36" RCP Flared End Section

N: 20,011.7138, E: 20,495.2370  
 Sta. 1+23.2, SWS Line No. 6A  
 Install 24" RCP Flared End Section

N: 19,960.4776, E: 20,932.9074  
 SSI, Sta. 10+41.5, 27.6' Rt.  
 Plug and Stake End of Pipe  
 See Detail Sheet No. C-404  
 E = 1423.29

N: 19,960.4776, E: 20,960.4887  
 SSI, Sta. 10+41.5  
 Const. MH 4  
 Standard MH

N: 19,593.9605, E: 20,960.4887  
 SSI, Sta. 14+08.0  
 Const. MH 5  
 Standard MH



No.	Revision	By	Date

STORM WATER AND SANITARY SEWER IMPROVEMENTS  
 EISENHOWER MIDDLE SCHOOL - USD 265  
 GODDARD, KANSAS

**SANITARY & STORM SEWER PLAN(S.-CENTRAL)**

JAMES L. ARMOUR, P.E. - CITY ENGINEER  
 PRIVATE PROJECT NO. 1925 PPS (607861)

**Professional Engineering Consultants, P.A.**  
 303 S. TOPKA • WICHITA, KANSAS 67202  
 316-262-2691 • FAX 316-262-3003

Designed by RRY, MDK Job No. 35-08430-259 Sht. C403  
 Drawn by TDS Date OCTOBER 2008





N: 20,356.4971, E: 21,763.9413  
Sta. 22+49.0, SWS Line No. 2  
Const. Std. Area Inlet  
L=5'-0", W=5'-4"  
Top Elev.= ~~1425.65~~ **1425.74**  
Install 252.01 L.F. 18" RCP (SE)  
See Sheet No. C-411

N: 20,176.2644, E: 21,940.0805  
Sta. 25+01.01, SWS Line No. 2  
Const. Std. Area Inlet  
L=5'-0", W=5'-4"  
Top Elev.= ~~1425.06~~ **1425.07**  
Install 67.18 L.F. 18" RCP (N)  
See Sheet No. C-411

N: 20,057.7524, E: 22,173.8218  
Sta. 49+68.32, SWS Line No. 5  
Begin SWS Line No. 10 Construction  
Install 15" RCP Flared End Section  
Install 31.48 L.F. 15" RCP (N)  
Install 12 S.Y. Light Stone Riprap

N: 20,089.4327, E: 22,173.8537  
Sta. 50+00.00, SWS Line No. 5  
Const. Std. Type 1A Curb Inlet  
L=5'-0", W=3'-0"  
Top Elev.= ~~1425.00~~ **1425.53**  
See Sheet No. C-410

N: 20,242.6966, E: 21,950.0901  
Sta. 25+68.19, SWS Line No. 2  
Const. Type 'P' Manhole  
Diameter = 4'-0"  
Top Elev.= ~~1426.96~~ **1427.37**  
See Sheet No. C-413  
Install 15" RL (NW) See Sheet C302  
Install 12" RL (E) See Sheet C302

N: 20,364.7049, E: 22,181.7653  
Sta. 42+20.3, SWS Line No. 4  
Const. Type 'P' Shallow Manhole  
Diameter = 4'-0"  
Top Elev.= ~~1427.72~~ **1427.66**  
See Sheet No. C-414  
Install 6" RL (N) See Sheet C302  
Install 15" RL (E) See Sheet C302

N: 20,341.6837, E: 22,365.3348  
Sta. 40+35.3, SWS Line No. 4  
Const. Std. Type 1A Curb Inlet  
L=5'-0", W=3'-0"  
Top Elev.= ~~1425.0~~ **1424.79**  
Install 185.0 L.F. 18" RCP (W)  
See Sheet No. C-410

N: 20,341.6658, E: 22,400.6677  
Sta. 40+00.0, SWS Line No. 4  
Const. Std. Type 1A Curb Inlet  
L=5'-0", W=3'-0"  
Top Elev.= ~~1425.0~~ **1424.66**  
Install 35.3 L.F. 24" RCP (W)  
See Sheet No. C-410

CAUTION !!!  
Proposed 8" Waterline

CAUTION !!!  
Prop. 8" SS Line

CAUTION !!!  
Proposed 8" Waterline

N: 20,341.5214, E: 22,449.1290  
Sta. 39+51.54, SWS Line No. 4  
Begin SWS Line No. 14 Construction  
Install 24" RCP Flared End Section  
Install 48.46 L.F. 24" RCP (W)  
Install 15 S.Y. Light Stone Riprap

N: 20,605.4964, E: 21,764.7301  
Sta. 20+00.0, SWS Line No. 2  
Const. Std. Area Inlet  
L=5'-0", W=5'-4"  
Top Elev.= ~~1425.70~~ **1425.69**  
Install 99.0 L.F. 24" RCP (S)  
See Sheet No. C-411

N: 20,506.4965, E: 21,764.6212  
Sta. 20+99.00, SWS Line No. 2  
Const. Std. Area Inlet  
L=5'-0", W=5'-4"  
Top Elev.= ~~1425.35~~ **1425.32**  
Install 150.0 L.F. 24" RCP (S)  
See Sheet No. C-411

N: 20,759.0079, E: 22,081.5282  
Sta. 31+34.42, SWS Line No. 3  
Const. Type 'P' Manhole  
Diameter = 4'-0"  
Top Elev.= ~~1427.30~~ **1427.20**  
See Sheet No. C-413  
Install 6" RL (SW) See Sheet C302  
Install 15" RL (E) See Sheet C302

CAUTION !!!  
Prop. 8" Waterline

N: 20,759.1611, E: 21,942.3362  
Sta. 2+97.00, SWS Line No. 3B  
Const. Std. Area Inlet  
L=5'-0", W=5'-4"  
Top Elev.= ~~1425.20~~ **1425.23**  
See Sheet No. C-411  
Install 15" RL (S) See Sheet C302

CAUTION !!!  
Prop. 8" Waterline

N: 20,892.9704, E: 21,932.5466  
Sta. 1+62.0, SWS Line No. 3B  
Const. Std. Area Inlet  
L=5'-0", W=5'-4"  
Top Elev.= ~~1424.00~~ **1424.03**  
Install 135.0 L.F. 18" RCP (S)  
See Sheet No. C-411

CAUTION !!!  
Prop. 8" SS Line

N: 20,892.7921, E: 22,094.5465  
Sta. 30+00.0, SWS Line No. 3  
Sta. 0+00.0, SWS Line No. 3A  
Sta. 0+00.0, SWS Line No. 3B  
Const. Std. Area Inlet  
L=5'-0", W=5'-4"  
Top Elev.= ~~1424.20~~ **1424.16**  
Install 134.41 L.F. 18" RCP (S)  
Install 141.0 L.F. 18" RCP (E)  
Install 162.0 L.F. 24" RCP (W)  
See Sheet No. C-411

N: 20,997.5560, E: 22,096.4402  
Sta. 28+95.22, SWS Line No. 3  
Begin SWS Line No. 3 Construction  
Install 24" RCP Flared End Section  
Install 104.78 L.F. 24" RCP (S)  
Install 16 S.Y. Light Stone Riprap

N: 20,892.6370, E: 22,235.5464  
Sta. 1+41.0, SWS Line No. 3A  
Const. Std. Area Inlet  
L=5'-0", W=5'-4"  
Top Elev.= ~~1424.50~~ **1424.43**  
Install 175.82 L.F. 15" RCP (NE)  
See Sheet No. C-411

CAUTION !!!  
Exist. 8" SS Line

N: 20,946.9530, E: 22,402.7728  
Sta. 3+16.82, SWS Line No. 3A  
Const. Std. Type 1-A Curb Inlet  
L=5'-0", W=3'-0"  
Top Elev.= ~~1424.99~~ **1425.05**  
See Sheet No. C-410

PROPOSED STORM WATER SEWER TO BE  
PRIVATELY OWNED AND MAINTAINED.

18 N: 20,939.2885, E: 22,195.9779  
Adjust Existing MH Top  
Existing Elev. = 1419.59  
Proposed Elev. = ~~1425.25~~ **1425.11**  
Total Adjustment = +5.7'

17 N: 20,959.4148, E: 21,893.4441  
Adjust Existing MH Top  
Existing Elev. = 1419.15  
Proposed Elev. = ~~1425.47~~ **1425.59**  
Total Adjustment = +6.3'

16 4" SS Service  
For Continuation, See Sheet C301

15 4" SS Service  
For Continuation, See Sheet C301

14 6" SS Service  
For Continuation, See Sheet C301

13 N: 20,830.7271, E: 21,958.5216  
SS3, Sta. 12+07.4  
Const. MH 11  
Shallow MH

12 Install 40.4 L.F.  
8" Pipe

11 N: 20,830.7271, E: 21,998.9883  
SS3, Sta. 11+67.0  
Const. MH 10  
Shallow MH

10 Install 236.6 L.F.  
8" Pipe

9 N: 20,830.7271, E: 22,235.5924  
SS3, Sta. 9+30.4  
Const. MH 9  
Standard MH

8 Install 208.7 L.F.  
8" Pipe

7 N: 20,830.7271, E: 22,444.2572  
SS3, Sta. 7+21.7  
Const. MH 8  
Shallow MH

6 Install 300.6 L.F.  
8" Pipe

5 N: 20,530.0798, E: 22,444.2572  
SS3, Sta. 4+21.1  
Const. MH 7  
Standard MH

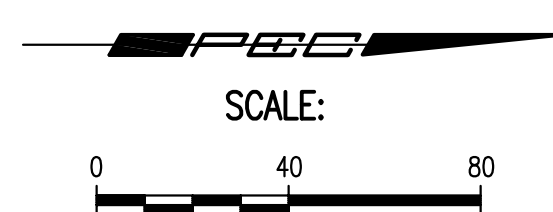
4 Install 70.3 L.F.  
8" Pipe

3 N: 20,465.0967, E: 22,417.3403  
SS3, Sta. 3+50.8  
Const. MH 6  
Standard MH

2 Install 230.0 L.F.  
8" Pipe

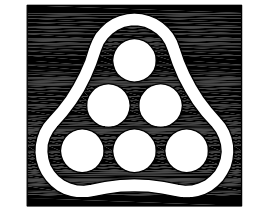
1 N: 20,235.1283, E: 22,417.3403  
SS3, Sta. 1+20.8  
Precast Concrete MH (By Others).  
Remove 8" Plug from 8" SS pipe  
and Begin Construction

MIDDLE  
SCHOOL



Saved: 01-06-2009 8:19:48 AM by RWM  
 Plot Scale: 1/40 01-21-2009 11:00:00 PM by RWM  
 Q:\2009\08430\CHANGE ORDER\PPS\SS-SWS\08430-C-405-SAN SEW AND SWP PLAN EAST

**AS BUILT**  
**7/24/2009**



No.	Revision	By	Date

STORM WATER AND SANITARY SEWER IMPROVEMENTS  
EISENHOWER MIDDLE SCHOOL - USD 265  
GODDARD, KANSAS

**SANITARY & STORM SEWER PLAN(EAST)**  
JAMES L. ARMOUR, P.E. - CITY ENGINEER  
PRIVATE PROJECT NO. 1925 PPS (607861)

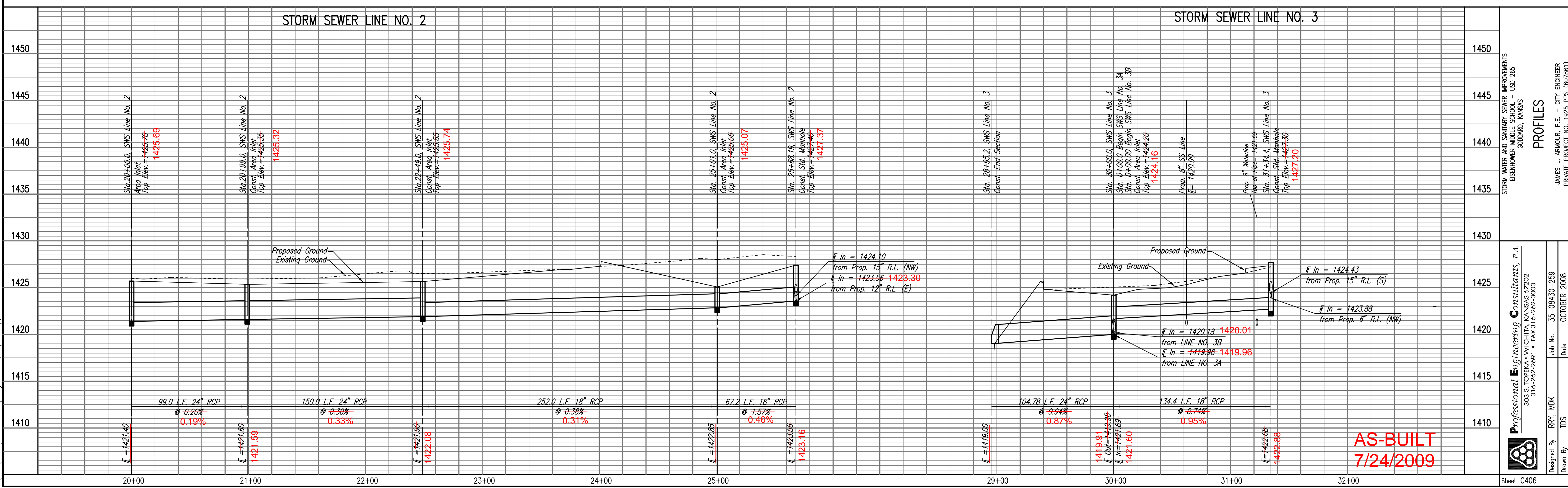
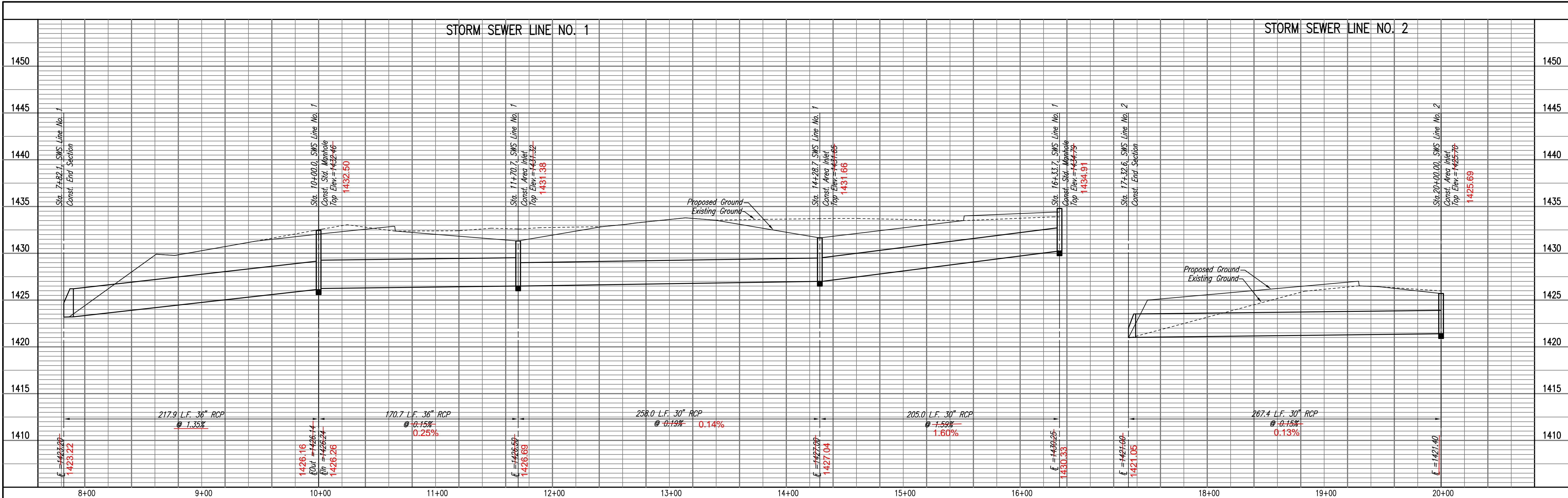
**Professional Engineering Consultants, P.A.**  
303 S. TOPKA • WICHITA, KANSAS 67202  
316-262-2691 • FAX 316-262-3003

Designed by	RRY, MDK	Job No.	35-08430-259	Sht.	C405
Drawn by	TDS	Date	OCTOBER 2008		

PROFILE CHECKED BY DATE

PROFILE CHECKED BY DATE

Saved: 01-06-2009 8:19:34 AM by R/W  
 Plot Scale: 1"=40' 01-21-2009 1:09:31 PM  
 Q:\2008\08430\CHANGE ORDER\1\PPS(SS-SWS)\08430-C-406-SWS PROFILES



**AS-BUILT**  
7/24/2009

Professional Engineering Consultants, P.A.  
 303 S. TORRES WICHITA, KANSAS 67202  
 316-262-2091 • FAX 316-262-3003

Designed By: RRY, MDK  
 Drawn By: TDS

Job No.: 35-08430-259  
 Date: OCTOBER 2008

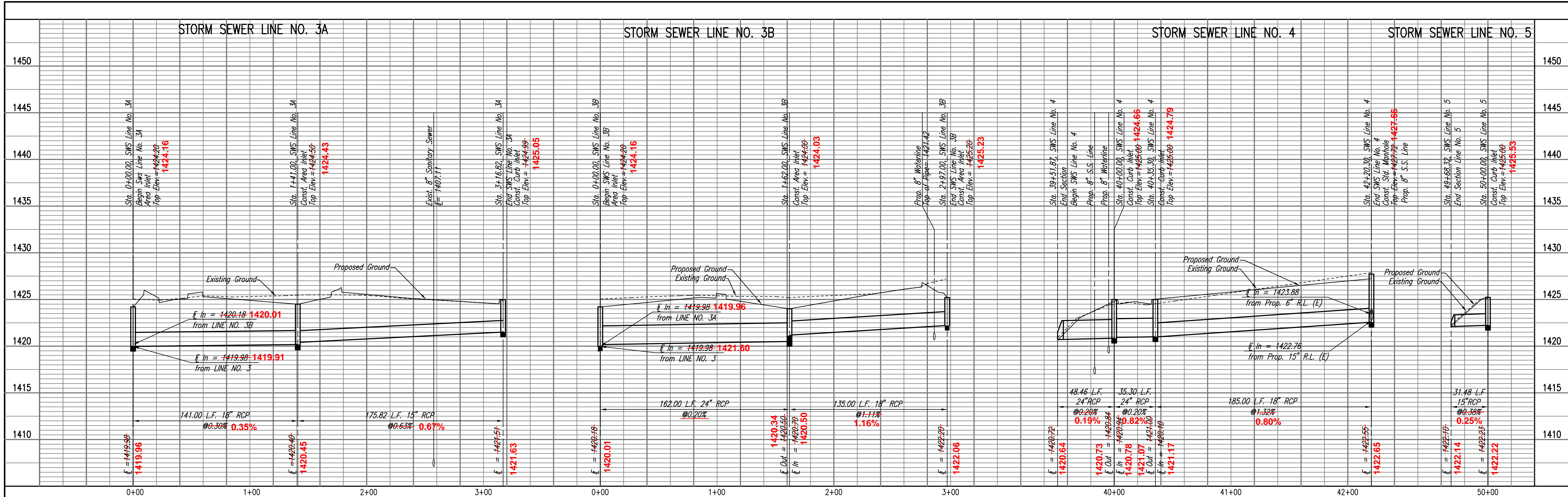
STORM WATER AND SANITARY SEWER IMPROVEMENTS  
 EISENHOWER MIDDLE SCHOOL - USD 265  
 GODDARD, KANSAS

**PROFILES**

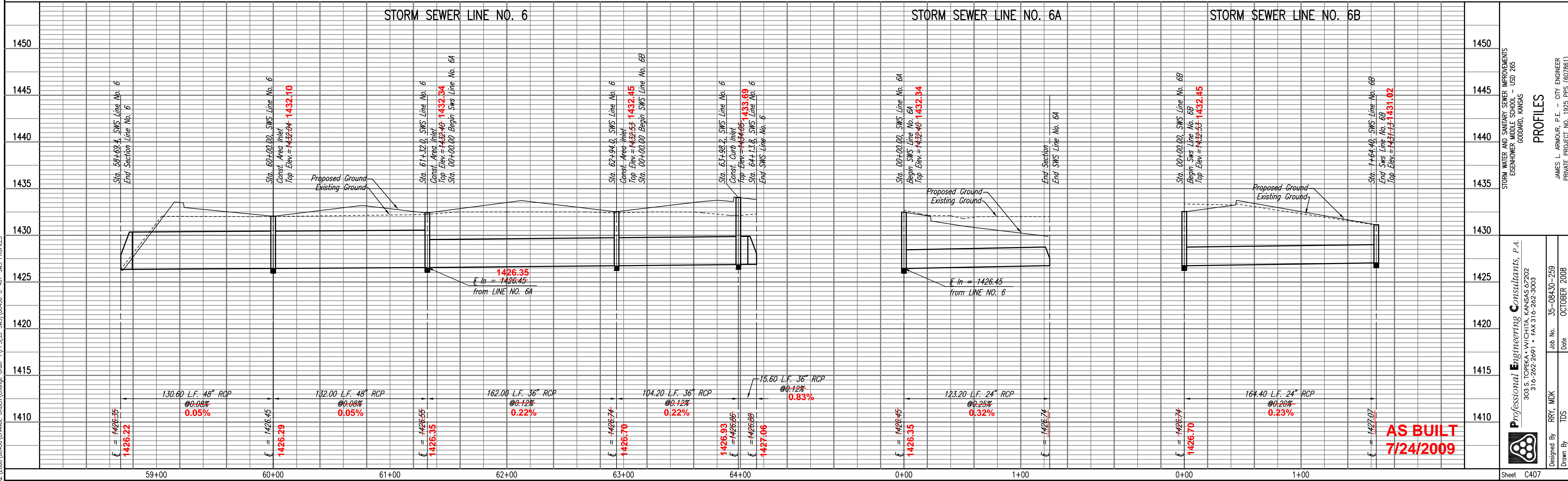
JAMES L. ARMOUR, P.E. - CITY ENGINEER  
 PRIVATE PROJECT NO. 1925 PPS (607861)

Sheet C406

PROFILE  
 CHECKED  
 CHECKED  
 BY  
 DATE



PROFILE  
 CHECKED  
 CHECKED  
 BY  
 DATE



Saved: 01-06-2009 8:19:28 AM by R/W  
 Plot Scale: 1"=40'  
 0:\2008\08430\CHANGE ORDER\1\PPS(SS-SWS)\08430-C-407-SWS PROFILES

Professional Engineering Consultants, P.A.  
 303 S. TORREY WILCHUS, KANSAS 67202  
 316.262.2091 • FAX 316.262.3003

Designed By: RRY, MDK  
 Drawn By: TDS

Job No.: 35-08430-259  
 Date: OCTOBER 2008

STORM WATER AND SANITARY SEWER IMPROVEMENTS  
 EISENHOWER MIDDLE SCHOOL - USD 265  
 GODDARD, KANSAS

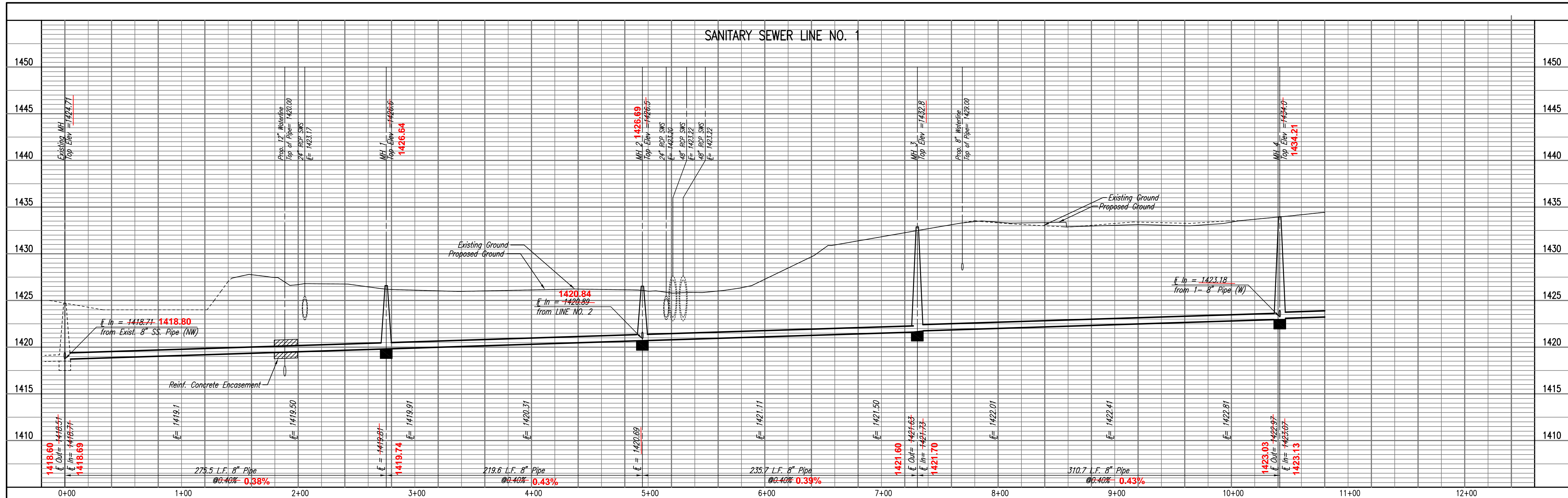
**PROFILES**

JAMES L. ARMOUR, P.E. - CITY ENGINEER  
 PRIVATE PROJECT NO. 1925 PPS (607861)

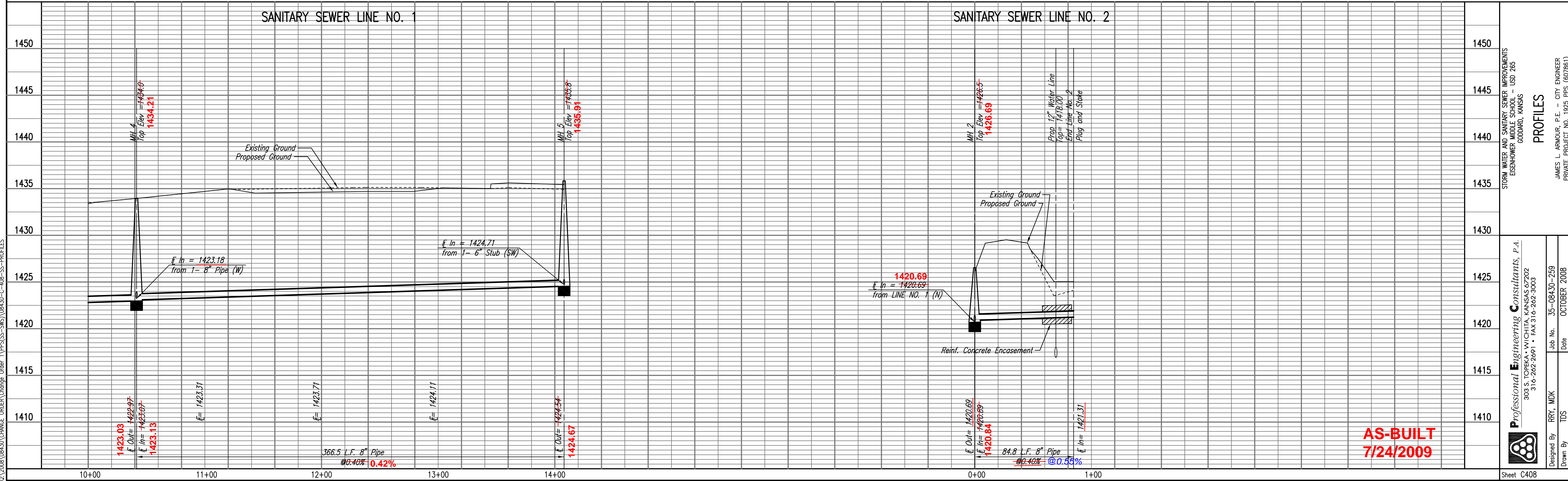
Sheet C407

**AS BUILT**  
**7/24/2009**

PROFILE CHECKED CHECKED  
BY DATE



PROFILE CHECKED CHECKED  
BY DATE



**AS-BUILT**  
**7/24/2009**

Saved: 01-06-2009 8:19:22 AM by R/W  
Plot Scale: 1"=40' 01-21-2009 1:08:45 PM  
C:\2008\08430\CHANGE ORDER\Change Order 1\PPS(SS-3WS)\08430-C-408-SS-PROFILES

Professional Engineering Consultants, P.A.  
303 S. TOPEKA AVENUE, SUITE 200  
316-202-2091 • FAX 316-202-3003

Designed By: RRY, MDK  
Drawn By: TDS

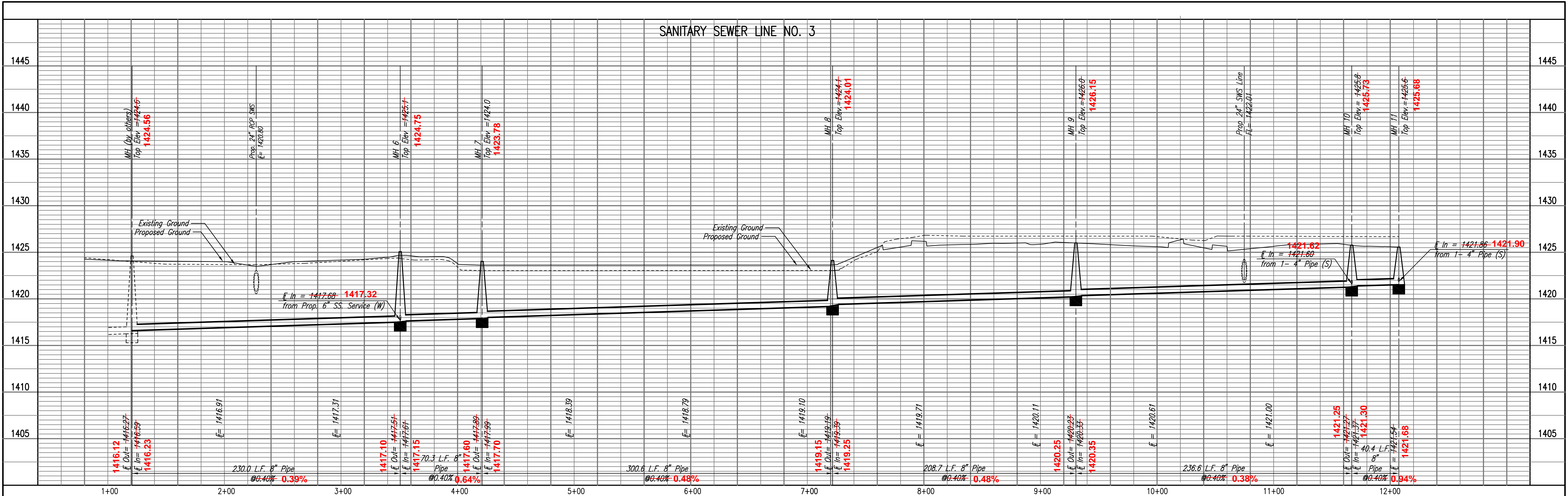
Job No.: 35-08430-259  
Date: OCTOBER 2008

STORM WATER AND SANITARY SEWER IMPROVEMENTS  
EISENHOWER MIDDLE SCHOOL - USD 265  
GODDARD, KANSAS

PROFILES  
JAMES L. ARMOUR, P.E. - CITY ENGINEER  
PRIVATE PROJECT NO. 1925 PPS (607861)

Sheet C408

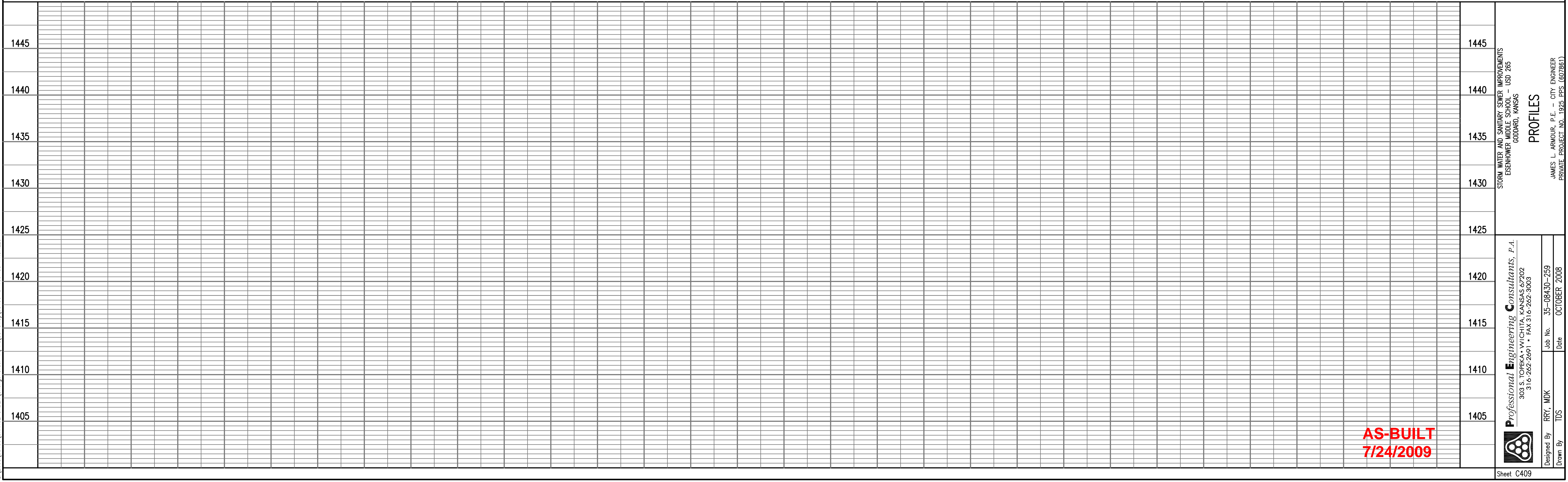
SANITARY SEWER LINE NO. 3



PROFILE  
 CHECKED  
 CHECKED  
 BY  
 DATE

PROFILE  
 CHECKED  
 CHECKED  
 BY  
 DATE

Saved: 01-06-2009 8:19:12 AM by R/W  
 Plot Scale: 1"=40'  
 0:\2008\08430\CHANGE ORDER\Change Order 1\PPS(SS-3WS)\08430-C-409-SS-PROFILES



**AS-BUILT**  
 7/24/2009

Professional Engineering Consultants, P.A.  
 303 S. TORRES WYCHITS, KANSAS 67202  
 316-262-2291 • FAX 316-262-3003

Designed By: RRY, MDK  
 Drawn By: TDS

Job No.: 35-08430-259  
 Date: OCTOBER 2008

STORM WATER AND SANITARY SEWER IMPROVEMENTS  
 EISENHOWER MIDDLE SCHOOL - USD 265  
 GODDARD, KANSAS

JAMES L. ARMOUR, P.E. - CITY ENGINEER  
 PRIVATE PROJECT NO. 1925 PPS (607861)

PROFILES

Sheet C409