

STORM WATER AND SANITARY SEWER IMPROVEMENTS

TO SERVE

APOLLO ELEMENTARY SCHOOL UNIFIED SCHOOL DISTRICT 265 GODDARD, KANSAS

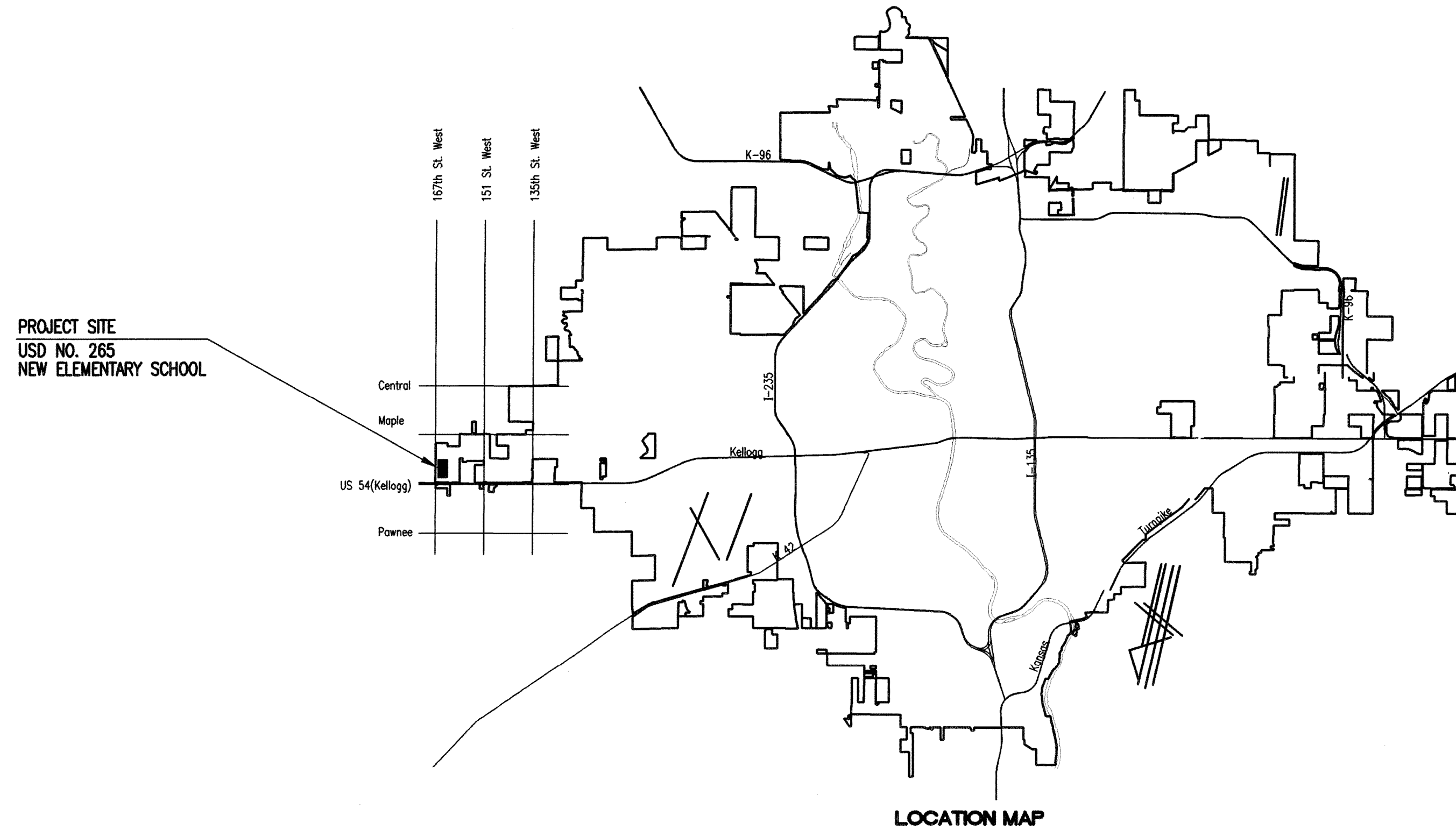
PRIVATE PROJECT NO. 1940 PPS (607861)

CITY OF WICHITA, KANSAS

JAMES L. ARMOUR, P.E. - CITY ENGINEER

INDEX OF SHEETS

C401	TITLE SHEET
C402	KEY MAP AND GENERAL NOTES
C403 - C405	SANITARY AND STORM SEWER PLANS
C406 - C407	SANITARY AND STORM SEWER PROFILES
C408	NOT USED
C409	VERTICAL RISER DETAIL
C410	STANDARD TYPE 1A CURB INLET DETAILS
C411	STANDARD AREA INLET DETAILS
C412	NOT USED
C413	STANDARD TYPE 'P' MANHOLE DETAILS
C414	SHALLOW MANHOLES TYPE 'P' & 'C'
C415	NOT USED
C416	MANHOLE FRAME AND COVER DETAILS
C501	SOIL EROSION BMP DETAILS
C502	SOIL EROSION BMP DETAILS
C503	SOIL EROSION BMP DETAILS



Release Date: 09/24/2009
:APRosas 09/24/2009

AS-BUILT PLANS

Contractor: Nowak Construction
Inspector: Robert Previtera, Reiss and Goodness Engineers
.pdf by R.P. 7/24/2009

APPROVED AS NOTED
By CITY ENGINEER OF WICHITA

Sanitary Sewers *Julianus Kellman* 1-10-09
Storm Sewers *Julianus Kellman* 1-10-09
Driveway Approaches _____
Paving _____

NOTE TO CONTRACTOR

INSPECTION AND TESTING FOR THIS PROJECT IS TO BE PROVIDED BY A LICENSED CONSULTING ENGINEERING FIRM CONTRACTED BY THE OWNER/DEVELOPER. SAID INSPECTION TO BE IN ACCORDANCE WITH THE CITY OF WICHITA STANDARD CONSTRUCTION ENGINEERING PRACTICES AND CERTIFIED BY A LICENSED PROFESSIONAL ENGINEER. NO WORK SHALL BE PERFORMED IN DEDICATED EASEMENTS OR PUBLIC RIGHT-OF-WAY BY THE CONTRACTOR UNTIL SUCH INSPECTION IS ARRANGED FOR AND REQUIRED BONDS HAVE BEEN SUBMITTED TO AND APPROVED BY THE CITY. NOR SHALL ANY WORK BE COMMENCED IN DEDICATED EASEMENTS OR PUBLIC RIGHT-OF-WAY WITHOUT WRITTEN AUTHORIZATION BY THE CITY ENGINEER. IMPROVEMENTS PERFORMED UNDER THIS PROJECT SHALL NOT BE ACCEPTED BY THE CITY UNTIL ALL APPLICABLE DOCUMENTATION HAS BEEN SUBMITTED TO THE CITY ENGINEER. THIS MAY INCLUDE: RECORD DRAWINGS, INSPECTION LOGS, TEST DOCUMENTATION, TV TAPES, AND A CERTIFICATE OF COMPLETION. THE ABOVE SHALL BE PERFORMED BY THE CONSULTING FIRM CONTRACTED TO INSPECT THIS PROJECT.

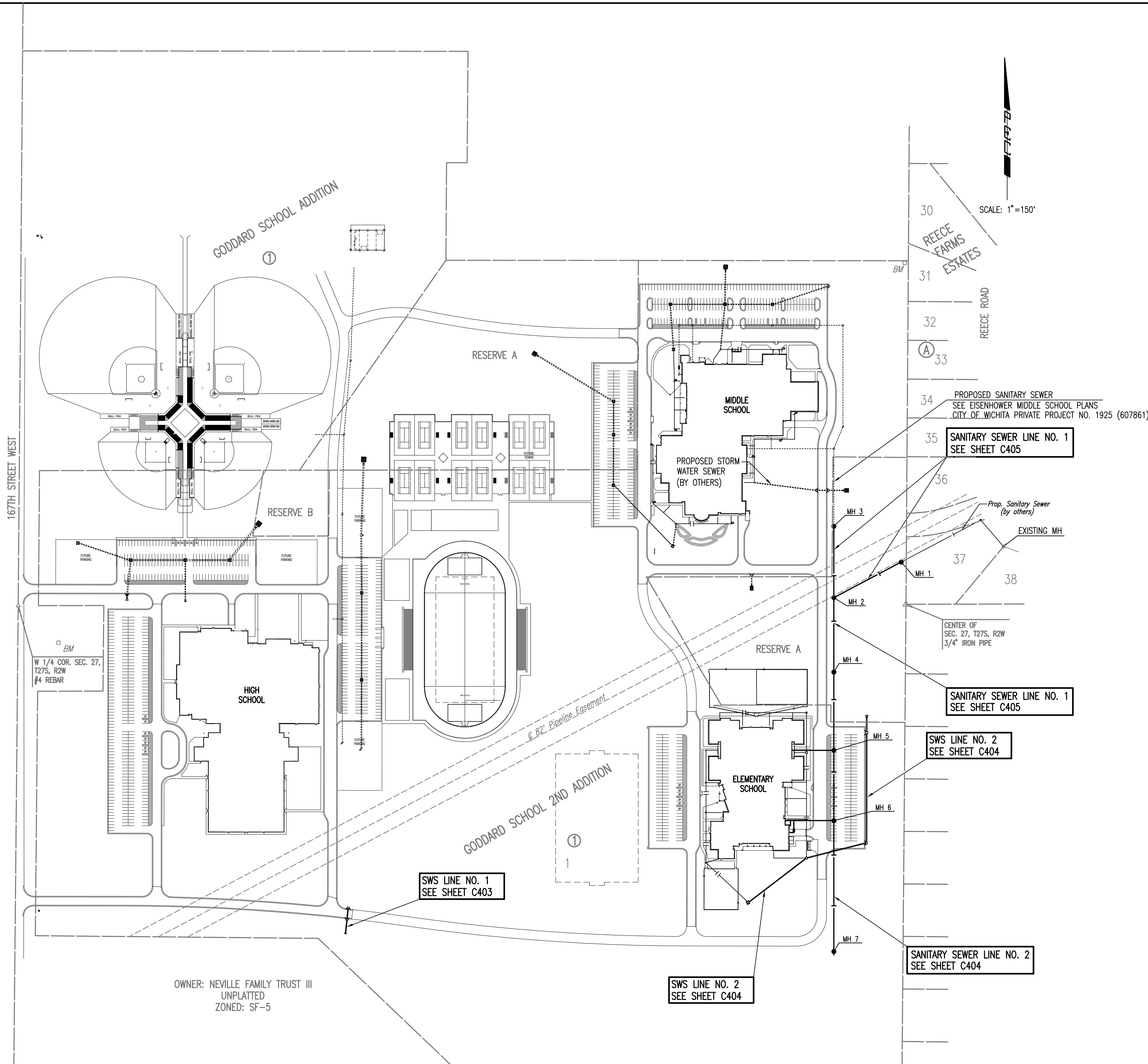
PROPOSED STORM WATER SEWER TO BE
PRIVATELY OWNED AND MAINTAINED.

JANUARY 2009

PLANS PREPARED BY
PROFESSIONAL ENGINEERING CONSULTANTS, P.A.
ENGINEERS
WICHITA, KANSAS



Served 01-05-2009 3:35:56 PM by RW
 Plot Scale 1:150 01-21-2009 11:48:57 AM
 Q:\2009\08429\DWG\CHANGE ORDER\1\PPS(SS-SWS)\08429-C-402-KEY MAP AND GENERAL NOTES



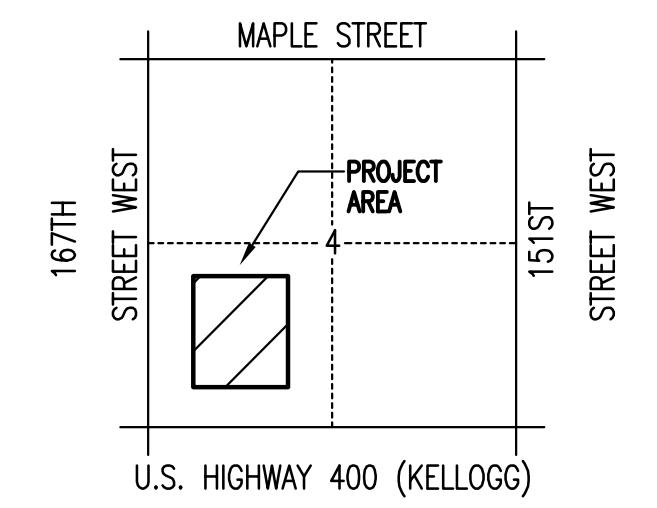
GENERAL NOTES

1. ALL CONSTRUCTION AND MATERIALS TO COMPLY WITH CITY OF WICHITA SPECIFICATIONS AND STANDARDS.
2. ALL ELEVATIONS SHOWN ARE U.S.G.S. DATUM.
3. THE CONTRACTOR SHALL LIMIT THE EXTENT OF TRENCH TO REMAIN OPEN OVERNIGHT AND WEEKENDS TO LESS THAN 50 FEET.
4. AT LEAST 72 HOURS PRIOR TO BEGINNING EXCAVATION (EXCLUDING WEEKENDS AND HOLIDAYS), THE CONTRACTOR SHALL CONTACT THE KANSAS ONE-CALL SYSTEM, A UTILITY LOCATION SERVICE, AT (316) 687-2470 TO REQUEST THE LOCAL UTILITY COMPANIES MARK ANY EXISTING LINES WITHIN THE PROJECT AREA.
5. UNDERGROUND UTILITY SERVICE LINES AND OVERHEAD UTILITY POLE LINES ARE TO BE ADJUSTED AS NECESSARY BY OTHERS PRIOR TO CONSTRUCTION UNLESS THE PLANS SPECIFICALLY CALL FOR THEIR ADJUSTMENT BY THE CONTRACTOR OR UNLESS THE PLANS SPECIFICALLY IDENTIFY A UTILITY TO BE ADJUSTED BY ITS OWNER DURING CONSTRUCTION. EXISTING UTILITIES AND THEIR LOCATIONS, AS SHOWN ON THE PLANS, REPRESENT THE BEST INFORMATION OBTAINABLE FOR THE DESIGN. THE CONTRACTOR WILL BE REQUIRED TO WORK AROUND EXISTING UTILITIES WITHIN THE RIGHT-OF-WAY WHICH DO NOT CONFLICT WITH PROPOSED CONSTRUCTION.
6. THE CONTRACTOR SHALL BE RESPONSIBLE FOR PRESERVING PROPERTY IRONS. THE CONTRACTOR WILL BE REQUIRED TO RE-ESTABLISH ANY PROPERTY IRONS WHICH ARE DAMAGED OR DESTROYED BY HIS CONSTRUCTION OPERATIONS. SUCH IRONS SHALL BE RE-ESTABLISHED BY A LICENSED LAND SURVEYOR IN ACCORDANCE WITH STATE LAWS.
7. CONTRACTOR SHALL PROVIDE POSITIVE DRAINAGE AWAY FROM ALL MANHOLE COVERS.
8. MANHOLES SHALL BE TYPE "P" MANHOLES. MANHOLES SHALL BE CONSTRUCTED IN ACCORDANCE WITH THE STANDARD SPECIFICATIONS AND THE STANDARD DETAIL DRAWINGS.
9. RUBBLE FROM THE REMOVAL OF MISCELLANEOUS STRUCTURES INCLUDING ANY TREES REMOVED, TREE TRIMMINGS, AND EXCESS EXCAVATION WHICH IS TO BE WASTED SHALL BE DISPOSED OF ON SITES PROVIDED BY THE CONTRACTOR. THESE SITES SHALL ALSO BE APPROVED BY THE ENGINEER AS TO SUITABILITY, APPEARANCE, AND SITE LOCATION. LOCATIONS THAT, IN THE OPINION OF THE ENGINEER, WILL LEAVE AN UNSIGHTLY APPEARANCE WILL NOT BE APPROVED. ALL DISPOSAL SITES MUST BE APPROVED BY THE KANSAS DEPARTMENT OF HEALTH AND ENVIRONMENT. MATERIAL EITHER STOCKPILED OR DISPOSED OF IN A FLOOD PLAIN WILL REQUIRE A KANSAS STATE BOARD OF AGRICULTURE PERMIT. ANY MATERIAL DUMPED IN WATERS OF THE UNITED STATES OR WETLANDS IS SUBJECT TO U.S. CORPS OF ENGINEERS PERMITTING REGULATIONS. ANY MATERIAL BURIED OR STOCKPILED BEYOND APPROVED CONSTRUCTION LIMITS MAY REQUIRE ARCHAEOLOGICAL INVESTIGATIONS UNLESS BURIED IN A PREVIOUSLY APPROVED DISPOSAL LOCATION.
10. ALL APPROVED EXCESS EXCAVATION WHICH IS TO BE WASTED SHALL BE STOCKPILED WITHIN GODDARD SCHOOL 2ND ADDITION AT NO ADDITIONAL COST TO THE OWNER. STOCKPILE LOCATIONS SHALL BE AS DIRECTED BY THE DEVELOPER AND IN ACCORDANCE WITH GENERAL NOTE NO. 9 ABOVE.
11. THE CONTRACTOR SHALL SEED ALL AREAS DISTURBED BY CONSTRUCTION ACTIVITIES WITH TEMPORARY RYE GRASS. RYE GRASS SEED SHALL BE PLANTED AT A MINIMUM RATE OF SIX (6) POUNDS PER ONE THOUSAND (1,000) SQUARE FEET. THIS TEMPORARY SEEDING MAY BE OMITTED ONLY IF OTHER SEEDING IS REQUIRED IN ACCORDANCE WITH GENERAL NOTE NO. 11 ABOVE. TEMPORARY SEEDING OR PERMANENT SEEDING/SODDING SHALL BE APPLIED WITHIN 14 DAYS AFTER THE AREA HAS BEEN DISTURBED.
12. THE CONTRACTOR SHALL AVOID REMOVAL OR TRIMMING OF ANY TREES OR SHRUBS WHERE POSSIBLE. WHERE THE CONTRACTOR BELIEVES THE REMOVAL OR TRIMMING IS UNAVOIDABLE, HE SHALL COORDINATE SUCH WORK WITH THE ENGINEER.
13. THE CONTRACTOR SHALL PREVENT ANY CONSTRUCTION DEBRIS FROM ENTERING THE EXISTING SANITARY SEWER DURING CONSTRUCTION.
14. THE CONTRACTOR SHALL GIVE ALL PROPERTY OWNERS AND/OR TENANTS OF DEVELOPED PROPERTY ADJACENT TO THE CONSTRUCTION OF THIS PROJECT A MINIMUM OF TEN (10) DAYS ADVANCE NOTICE PRIOR TO START OF CONSTRUCTION.
15. CONTRACTOR IS REQUIRED TO MAINTAIN CONTINUOUS FLOW OF SEWAGE IN EXISTING MAINS AT ALL TIMES.
16. THE CONTRACTOR SHALL NOT BURY MANHOLES THAT HAVE RIM ELEVATIONS WHICH ARE LOWER THAN EXISTING GROUND AT THE MANHOLE. THE GROUND AROUND SUCH MANHOLES AND ALONG THE SEWER ALIGNMENT SHALL BE BACKFILLED TO THE APPROXIMATE ELEVATION OF THE PROPOSED GROUND ELEVATION SHOWN ON THE PLAN/PROFILE SHEETS. THE CONTRACTOR SHALL PROVIDE DRAINAGE AWAY FROM THESE MANHOLES AND SEWER LINES BY CONSTRUCTION OF TEMPORARY DITCHES OR SLOPING THE GROUND AS REQUIRED.
17. THE CONTRACTOR SHALL PROVIDE MOUNDED EARTH AT MANHOLES AND CLEANOUTS THAT HAVE TOP ELEVATIONS GREATER THAN 1 FOOT ABOVE EXISTING GRADE, AS SHOWN ON THE PLANS.
18. INTERURBAN TRAFFIC GENERATED OUTSIDE THE PROJECT AREA AND LOCAL BUSINESS OR RESIDENTIAL TRAFFIC GENERATED WITHIN THE PROJECT AREA ARE TO BE CARRIED THROUGH CONSTRUCTION AS FURTHER PROMULGATED BY PROJECT SPECIAL PROVISIONS. THE CONTRACTOR SHALL UTILIZE BARRICADES, SIGNS, GUARDS, AND FLAGMEN IN ACCORDANCE WITH THE MANUAL ON UNIFORM TRAFFIC CONTROL DEVICES.
19. WHERE INDICATED IN THE PLANS, THE SANITARY/STORM SEWER EXCAVATION SHALL BE SAND FILLED AND FLUSHED (JETTED AND VIBRATED) WITH WATER PER THE REQUIREMENTS LISTED IN THE STANDARD SPECIFICATIONS FOR THE CITY OF WICHITA, UNLESS FLOWABLE FILL OR OTHER IMPROVED BACKFILL MATERIAL IS OTHERWISE SPECIFIED.
20. THE CONTRACTOR SHALL OBTAIN A COPY OF THE APPROVED NOTICE OF INTENT FOR STORM WATER DISCHARGES FROM THE SITE AND MEET THE REQUIREMENTS OF THE PERMIT. THE CONTRACTOR SHALL INSTALL AND/OR MAINTAIN EROSION CONTROL MEASURES AS REQUIRED PER THE NOI. A COPY WILL BE PROVIDED TO THE CONTRACTOR UPON CONTRACT AWARD.

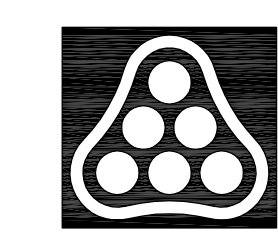
PROPOSED STORM WATER SEWER TO BE PRIVATELY OWNED AND MAINTAINED.

BENCHMARK LIST

- BENCH MARK: CHISELED SQUARE ON WEST END OF WATER TOWER BASE, 100'S. AND 130' E. OF THE WEST QUARTER CORNER, SEC. 27, T27S, R2W.
ELEV.=1433.38 (M.S.L.)
- BENCH MARK: R&B BRASS DISK SET IN CONCRETE, 10' W. AND 1008' N. OF THE N.E. CORNER, SW1/4, SEC. 27, T27S, R2W.
ELEV.=1418.67 (M.S.L.)
- BENCH MARK: R&B BRASS DISK SET IN CONCRETE, 1658' W. AND 83' N. OF THE S.E. CORNER, SW1/4, SEC. 27, T27S, R2W.
ELEV.=1416.56 (M.S.L.)
- (SURVEY BY RUGGLES & BOHM P.A.)



AS-BUILT
7/24/2009



No.	Revision	By	Date

STORM WATER AND SANITARY SEWER IMPROVEMENTS
APOLLO ELEMENTARY SCHOOL - USD 265
GODDARD, KANSAS

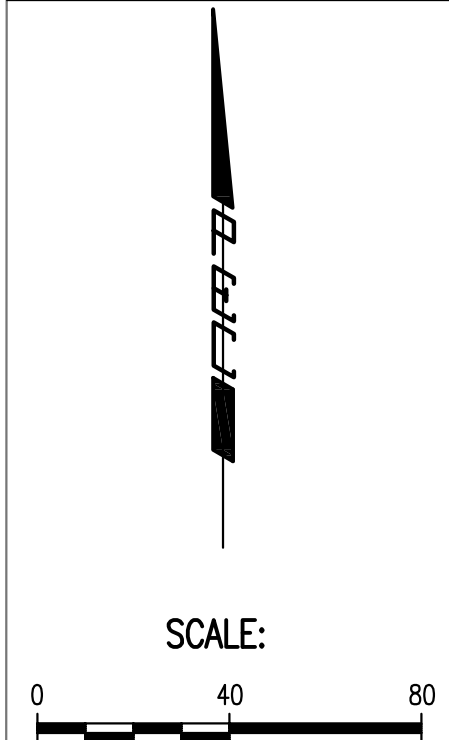
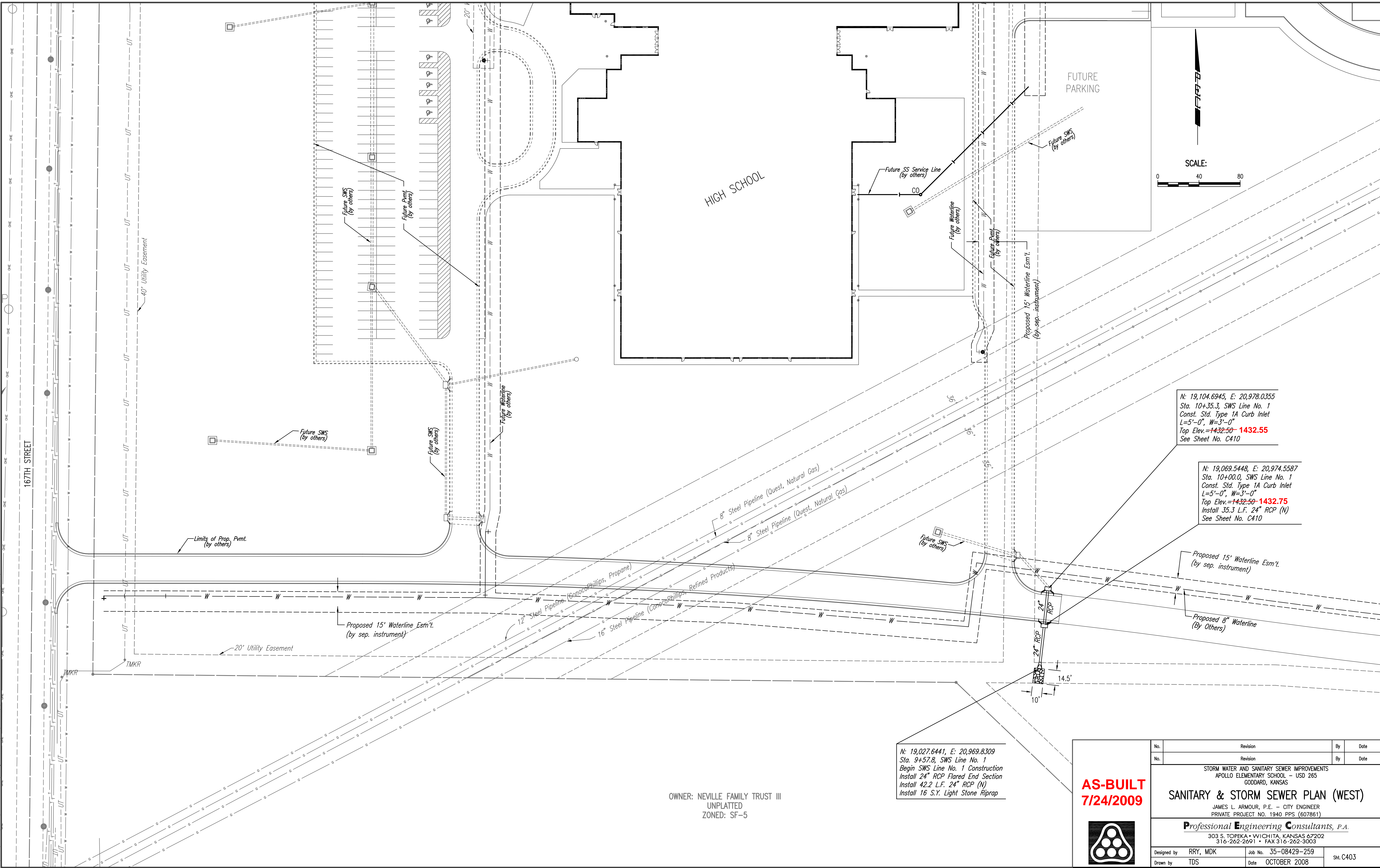
KEY MAP AND GENERAL NOTES

JAMES L. ARMOUR, P.E. - CITY ENGINEER
PRIVATE PROJECT NO. 1940 PPS (607861)

Professional Engineering Consultants, P.A.
303 S. TOPEKA • WICHITA, KANSAS 67202
316-262-2691 • FAX 316-262-3003

Designed by RRY, MDK	Job No. 35-08429-259	Sht. C402
Drawn by TDS	Date OCTOBER 2008	

Saved: 01-06-2009 8:16:14 AM by RJJ
 Plot Scale: 1"=40' 01-21-2009 11:48:05 AM
 C:\2009\08429\DWG\CHANGE ORDER\1\PPS(SS-SWS)\08429-C-403-SANITARY AND STORM SEWER PLAN (WEST)



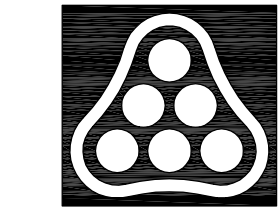
N: 19,104.6945, E: 20,978.0355
 Sta. 10+35.3, SWS Line No. 1
 Const. Std. Type 1A Curb Inlet
 L=5'-0", W=3'-0"
 Top Elev.=1432.50-1432.55
 See Sheet No. C410

N: 19,069.5448, E: 20,974.5587
 Sta. 10+00.0, SWS Line No. 1
 Const. Std. Type 1A Curb Inlet
 L=5'-0", W=3'-0"
 Top Elev.=1432.50-1432.75
 Install 35.3 L.F. 24" RCP (N)
 See Sheet No. C410

N: 19,027.6441, E: 20,969.8309
 Sta. 9+57.8, SWS Line No. 1
 Begin SWS Line No. 1 Construction
 Install 24" RCP Flared End Section
 Install 42.2 L.F. 24" RCP (N)
 Install 16 S.Y. Light Stone Riprap

OWNER: NEVILLE FAMILY TRUST III
 UNPLATTED
 ZONED: SF-5

AS-BUILT
7/24/2009



No.	Revision	By	Date

STORM WATER AND SANITARY SEWER IMPROVEMENTS
 APOLLO ELEMENTARY SCHOOL - USD 265
 GODDARD, KANSAS

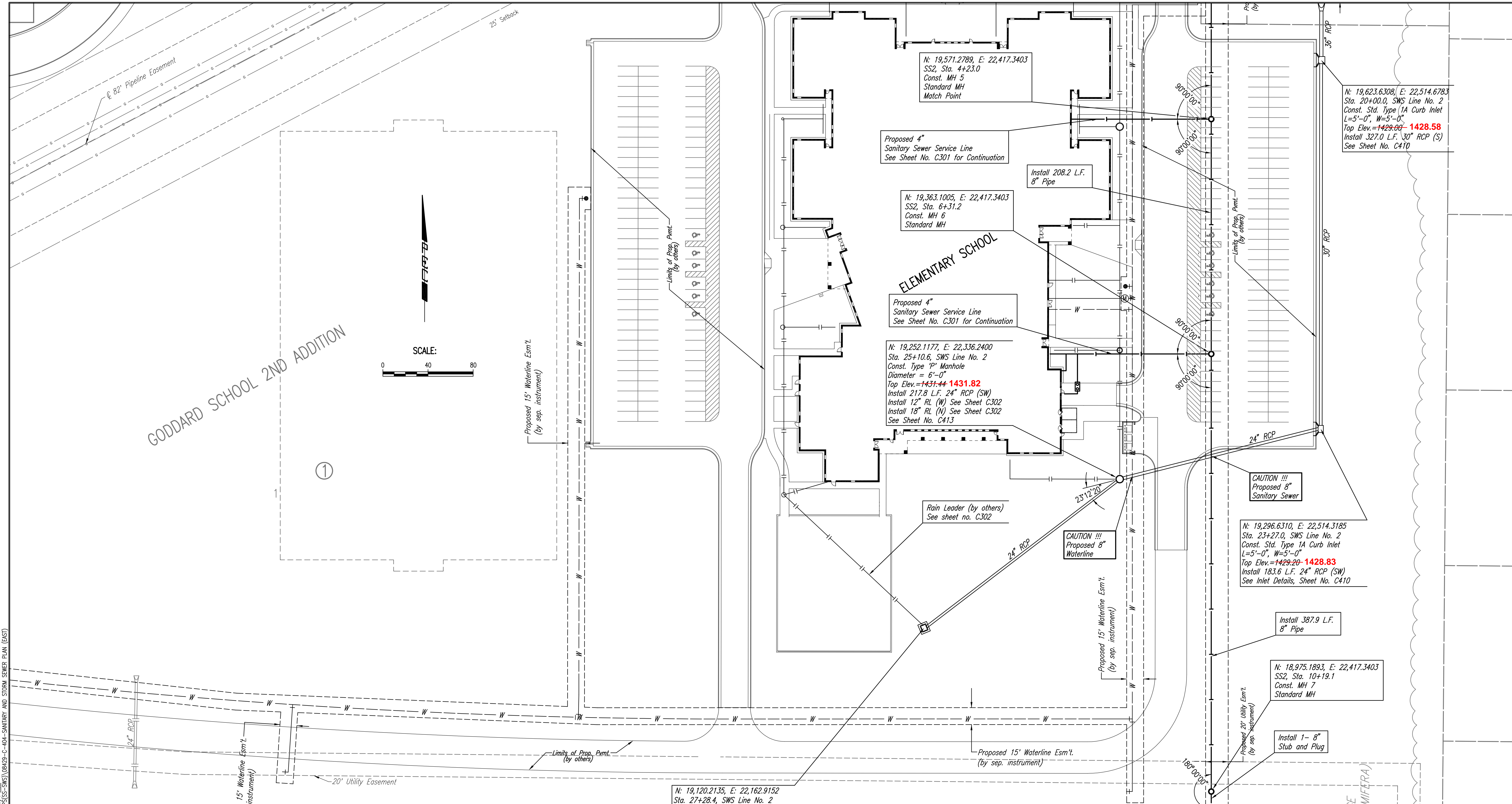
SANITARY & STORM SEWER PLAN (WEST)
 JAMES L. ARMOUR, P.E. - CITY ENGINEER
 PRIVATE PROJECT NO. 1940 PPS (607861)

Professional Engineering Consultants, P.A.
 303 S. TOPEKA • WICHITA, KANSAS 67202
 316-262-2691 • FAX 316-262-3003

Designed by	RRY, MDK	Job No.	35-08429-259	Sht. C403
Drawn by	TDS	Date	OCTOBER 2008	

Saved: 01-06-2009 8:16:06 AM by RW
 Plot Scale: 1:40 01-21-2009 11:47:16 AM
 C:\2009\08429\DWG\CHANGE ORDER\1\PPS(SS-SWS)\08429-C-404-SANITARY AND STORM SEWER PLAN (EAST)

GODDARD SCHOOL 2ND ADDITION



PROPOSED STORM WATER SEWER TO BE PRIVATELY OWNED AND MAINTAINED.

N: 19,120.2135, E: 22,162.9152
 Sta. 27+28.4, SWS Line No. 2
 Const. Std. Area Inlet
 L = 5'-0", W = 5'-4"
 Top Elev. = ~~1430.00~~ **1430.10**
 Install 15" RL (NW)
 See Sheet No. C411

N: 19,571.2789, E: 22,417.3403
 SS2, Sta. 4+23.0
 Const. MH 5
 Standard MH
 Match Point

N: 19,363.1005, E: 22,417.3403
 SS2, Sta. 6+31.2
 Const. MH 6
 Standard MH

N: 19,252.1177, E: 22,336.2400
 Sta. 25+10.6, SWS Line No. 2
 Const. Type "P" Manhole
 Diameter = 6'-0"
 Top Elev. = ~~1431.44~~ **1431.82**
 Install 217.8 L.F. 24" RCP (SW)
 Install 12" RL (W) See Sheet C302
 Install 18" RL (N) See Sheet C302
 See Sheet No. C413

N: 19,623.6308, E: 22,514.6783
 Sta. 20+00.0, SWS Line No. 2
 Const. Std. Type 1A Curb Inlet
 L=5'-0", W=5'-0"
 Top Elev. = ~~1429.00~~ **1428.58**
 Install 327.0 L.F. 30" RCP (S)
 See Sheet No. C410

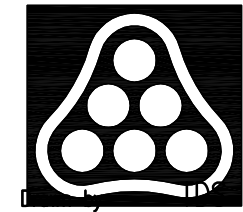
N: 19,296.6310, E: 22,514.3185
 Sta. 23+27.0, SWS Line No. 2
 Const. Std. Type 1A Curb Inlet
 L=5'-0", W=5'-0"
 Top Elev. = ~~1429.20~~ **1428.83**
 Install 183.6 L.F. 24" RCP (SW)
 See Inlet Details, Sheet No. C410

N: 18,975.1893, E: 22,417.3403
 SS2, Sta. 10+19.1
 Const. MH 7
 Standard MH

Install 1- 8" Stub and Plug

Install 387.9 L.F. 8" Pipe

AS-BUILT
7/24/2009



No.	Revision	By	Date

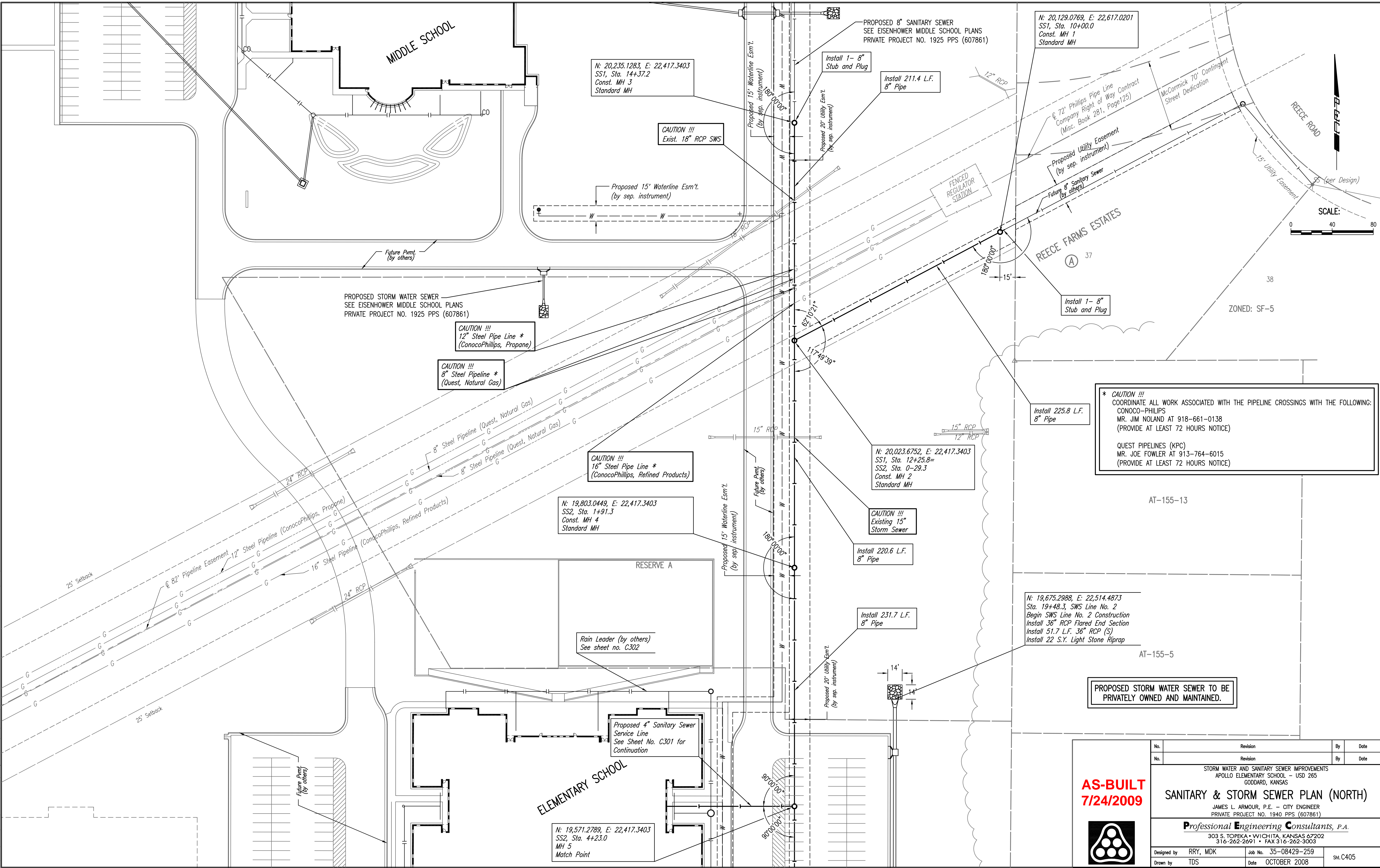
STORM WATER AND SANITARY SEWER IMPROVEMENTS
 APOLLO ELEMENTARY SCHOOL - USD 265
 GODDARD, KANSAS

SANITARY & STORM SEWER PLAN (EAST)
 JAMES L. ARMOUR, P.E. - CITY ENGINEER
 PRIVATE PROJECT NO. 1940 PFW (607861)

Professional Engineering Consultants, P.A.
 303 S. TOPEKA • WICHITA, KANSAS 67202
 316-262-2691 • FAX 316-262-3003

Designed by RRY, MDK Job No. 35-08429-259
 Date OCTOBER 2008 Sht. C404

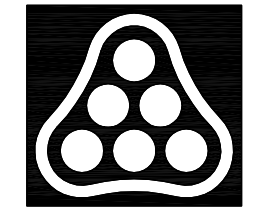
Saved: 01-06-2009 8:15:56 AM by: RWJ
 Plot Scale: 1"=40' 01-21-2009 11:46:36 AM
 Q:\2009\08429\DWG\SS\CHANGE ORDER\1\PPS(SS-SWS)\08429-C-405-SANITARY AND STORM SEWER PLAN (NORTH)



*** CAUTION !!!**
 COORDINATE ALL WORK ASSOCIATED WITH THE PIPELINE CROSSINGS WITH THE FOLLOWING:
 CONOCO-PHILIPS
 MR. JIM NOLAND AT 918-661-0138
 (PROVIDE AT LEAST 72 HOURS NOTICE)
 QUEST PIPELINES (KPC)
 MR. JOE FOWLER AT 913-764-6015
 (PROVIDE AT LEAST 72 HOURS NOTICE)

PROPOSED STORM WATER SEWER TO BE PRIVATELY OWNED AND MAINTAINED.

**AS-BUILT
 7/24/2009**



No.	Revision	By	Date

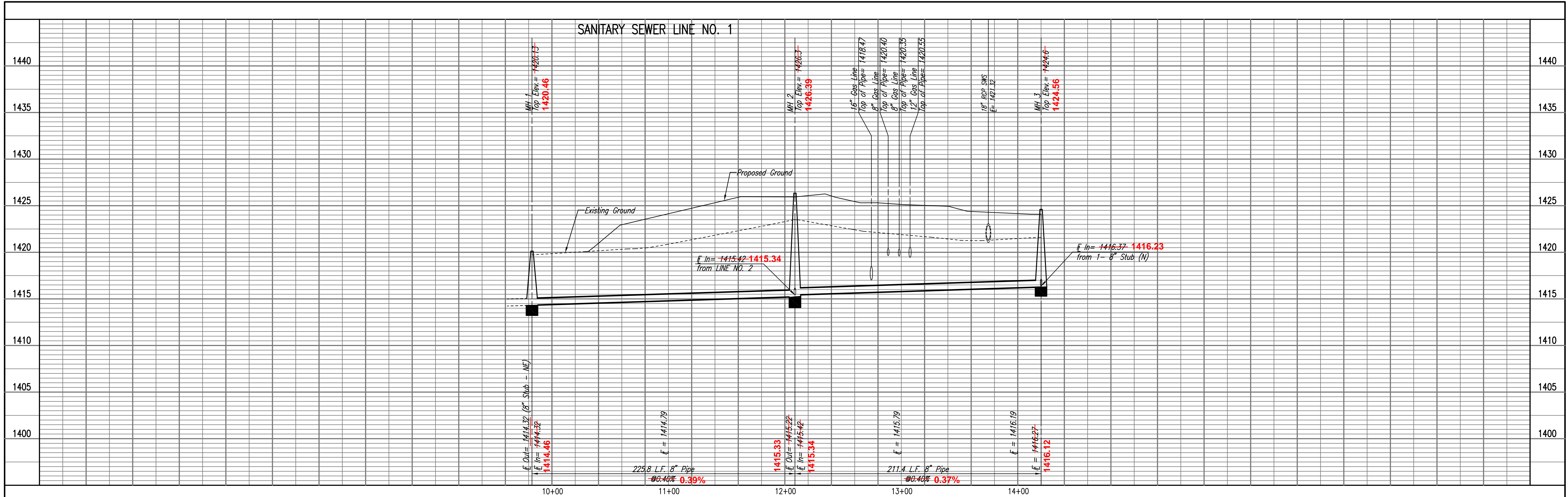
STORM WATER AND SANITARY SEWER IMPROVEMENTS
 APOLLO ELEMENTARY SCHOOL - USD 265
 GODDARD, KANSAS

SANITARY & STORM SEWER PLAN (NORTH)
 JAMES L. ARMOUR, P.E. - CITY ENGINEER
 PRIVATE PROJECT NO. 1940 PPS (607861)

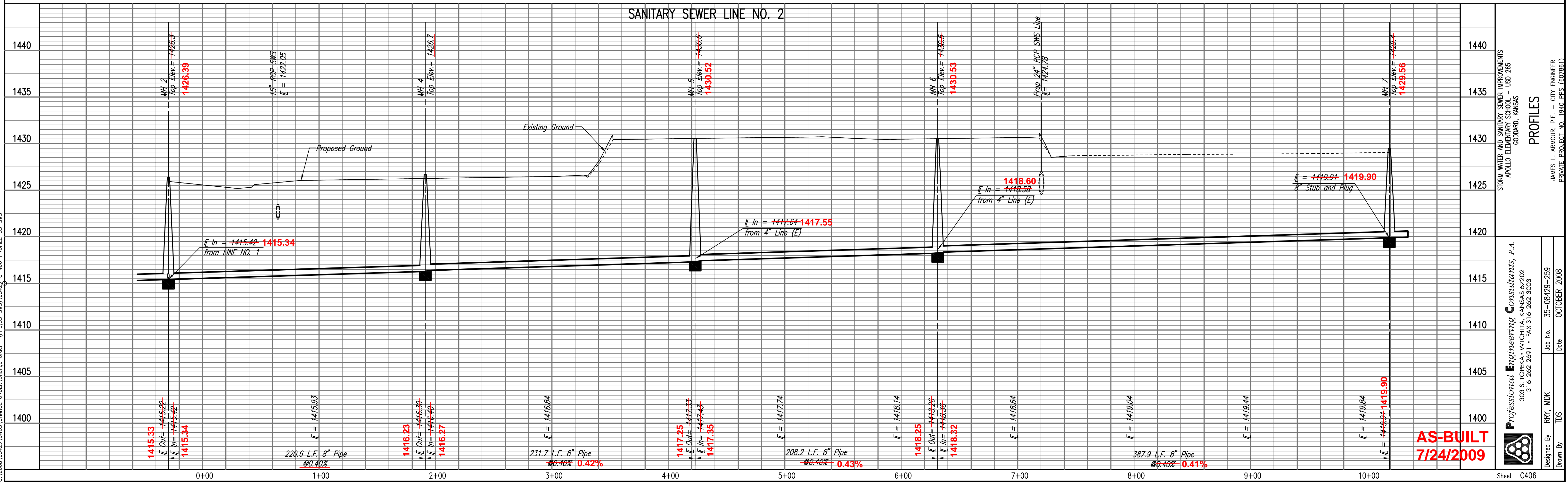
Professional Engineering Consultants, P.A.
 303 S. TOPEKA • WICHITA, KANSAS 67202
 316-262-2691 • FAX 316-262-3003

Designed by	RRY, MDK	Job No.	35-08429-259	Sht. C405
Drawn by	TDS	Date	OCTOBER 2008	

PROFILE CHECKED CHECKED
BY DATE



PROFILE CHECKED CHECKED
BY DATE



Saved 01-06-2009 8:15:48 AM by RWJ
Plot Scale 1:40 01-21-2009 11:46:02 AM
Q:\2008\08123\DWG\CHANGE ORDER\1\PPS(SS-SWS)\08123-C-406-PROFILE-SS-SWS

STORM WATER AND SANITARY SEWER IMPROVEMENTS
APOLLO ELEMENTARY SCHOOL - USD 265
GODDARD, KANSAS

Professional Engineering Consultants, P.A.
303 S. TORRES WICHITA, KANSAS 67202
316.262.2091 • FAX 316.262.3003

AS-BUILT
7/24/2009

Sheet C406

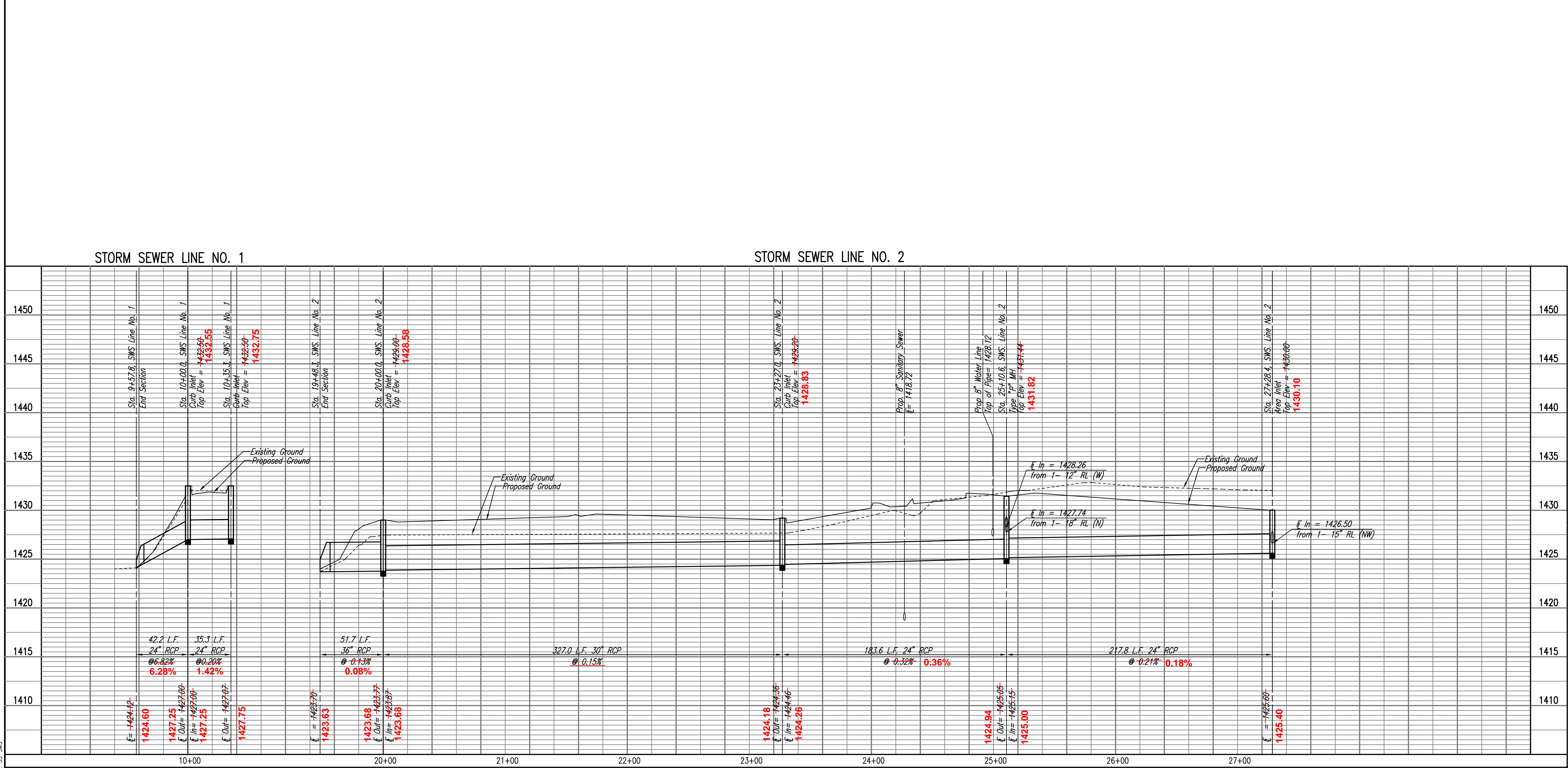
PROFILES
JAMES L. ARMOUR, P.E. - CITY ENGINEER
PRIVATE PROJECT NO. 1940 PPS (607861)

Designed By RRY, MDK
TDS
Job No. 35-08429-259
Date OCTOBER 2008

PROFILE	CHECKED	BY	DATE
	CHECKED		

PROFILE	CHECKED	BY	DATE
	CHECKED		

Saved: 01-06-2009 8:15:42 AM by RWJ
 Plot Scale: 1"=40' 01-21-2009 11:45:09 AM
 0_2009(08429)DWG(S)CHANGE ORDER 1\PPS(SS-SWS)\08429-C-407-PROFILE-SS-SWS



AS-BUILT
7/24/2009

Professional Engineering Consultants, P.A.
 303 S. TORREY WILSON, KANSAS CITY, MO 64108
 316-262-2091 • FAX 316-262-3003

Designed By: RRY, MDK
 Drawn By: TDS

Job No.: 35-08429-259
 Date: OCTOBER 2008

STORM WATER AND SANITARY SEWER IMPROVEMENTS
 APOLLO ELEMENTARY SCHOOL - USD 265
 GODDARD, KANSAS

PROFILES

JAMES L. ARMOUR, P.E. - CITY ENGINEER
 PRIVATE PROJECT NO. 1940 PPS (607861)