

WATER LINE IMPROVEMENTS TO SERVE NEUROLOGY CONSULTANTS OF KANSAS

A portion of Lot 4, Block 1, The Collective
(SE Corner of 21st St. N. and K-96)

Private Project No. 1501PPW 607853

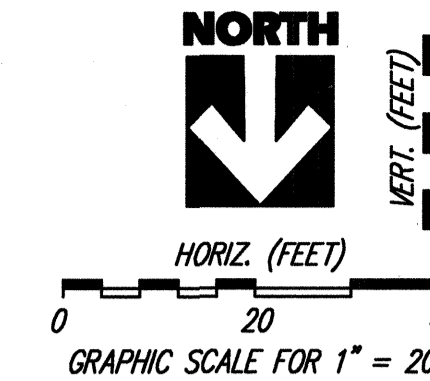
City of Wichita
Sedgwick County, Kansas
JAMES L. ARMOUR, PE, CITY ENGINEER



WDM Architects P.A.
105 North Washington
Wichita, KS 67202-2815
T 316.262.4700
F 316.262.0002
wdmarchitects.com

we do more

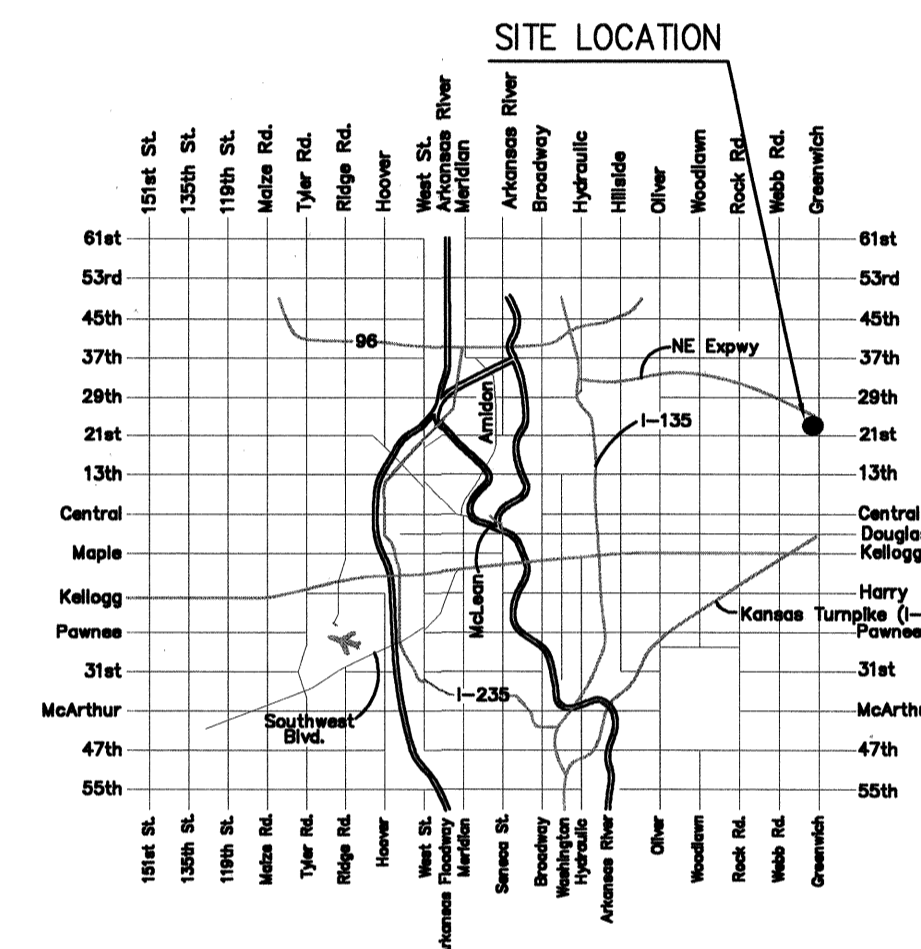
Neurology Consultants of Kansas
Wichita, Kansas



- LEGEND:**
- TC = Top of Curb Elev.
 - FL = Pavement Flowline Elev.
 - GND = Ground Elev.
 - 1375 = Proposed Contours, 1-ft. intervals
 - = Direction of surface water runoff.

Site Benchmark:
Chisled "C" cut on back of curb, west side of Collective Lane, south end of south curb return at northeast corner of Lot 4, Blk 1, The Collective.
Elev.=1373.95 N.G.V.D.

VICINITY MAP:



YOUNG & ASSOCIATES, P.A.
Professional Civil Engineering Consultants
100 South Georgia, Derby, Kansas 67037
tele: (316)788-2552, fax: (316)788-4408, email: youngpa@earthlink.net

INDEX OF SHEETS:

- 4" FIRE PROTECTION WATER LINE PLAN / PROFILE.....C-3A
- SITE PLAN & GENERAL NOTES.....C-1
- STANDARD WATER ASSEMBLY DETAILS.....C-4A

APPROVED AS NOTED
BY CITY ENGINEER OF WICHITA,
BY WICHITA WATER & SEWER DEPARTMENT,
& BY WICHITA FIRE DEPARTMENT

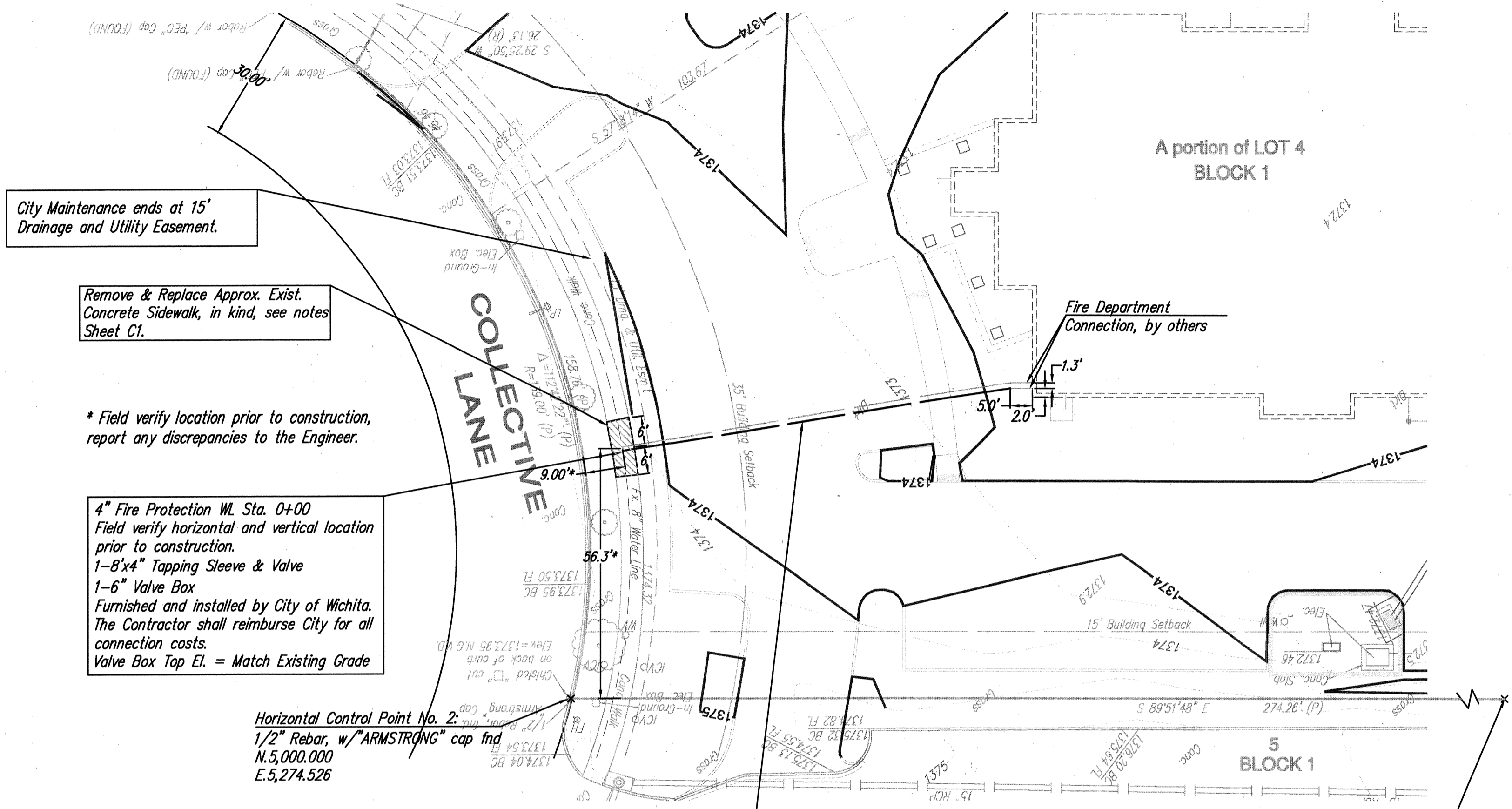
Public Works *[Signature]* 11/4/09
Water & Sewer _____
Fire _____

NOTE TO CONTRACTORS

Public Property:
Inspection and testing for the waterline is to be provided by a Licensed Consulting Engineering Firm under contract with the Owner/Developer. Said inspection to be in accordance with the City of Wichita standard construction engineering practices and certified by a Professional Engineer Licensed in the state of Kansas. No work shall be performed in dedicated easements or public right-of-way by the Contractor without such inspection nor shall any work be commenced without written authorization by the City Engineer. All Construction and Materials shall comply with the City or Wichita Specifications and Standards (on file and available in the City Engineer's Office).

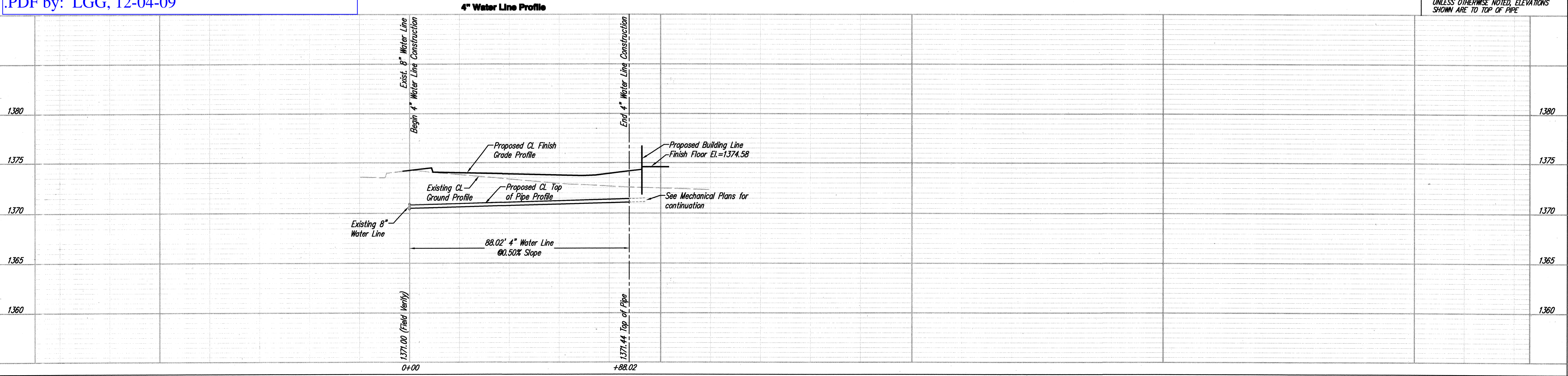
Private Property:
Installation and testing for the fire protection line is to be performed by a City of Wichita licensed fire protection contractor in accordance with the fire codes as adopted by the City of Wichita. All material and construction practices for the fire protection line shall comply with the fire codes as adopted by the City of Wichita (available from the City of Wichita Fire Department). The Contractor shall not commence work without notification and approval of the Wichita Fire Department. Inspection of the fire protection line is to be provided by a licensed Engineering Firm under contract with the Owner/Developer and the Fire Department. The contractor shall not start work until the project inspector is assigned to the project and present on the site. Any work done without inspection will be required to be uncovered for inspection.

CITY OF WICHITA PRIVATE PROJECT NO.:
1501 PPS 607853



As Built Plans:
CONTRACTOR: Mies
INSPECTOR: Larry Gann, K E Miller Engineering
.PDF by: LGG, 12-04-09

4" Fire Protection WL Sta. 0+00 to Sta. 0+88.02
Construct 88.02 LF 4" Water Line.



UNLESS OTHERWISE NOTED, ELEVATIONS SHOWN ARE TO TOP OF PIPE

PRINTS ISSUED
06/08/09 - Concept Review
06/23/09 - Preliminary Review
07/13/09 - GMP Pricing
08/14/09 - Permit submittal
10/12/09 - For Construction

WDM No. 08135
drawn: CRY
checked: CRY

WATER LINE PLAN & PROFILE

C3A