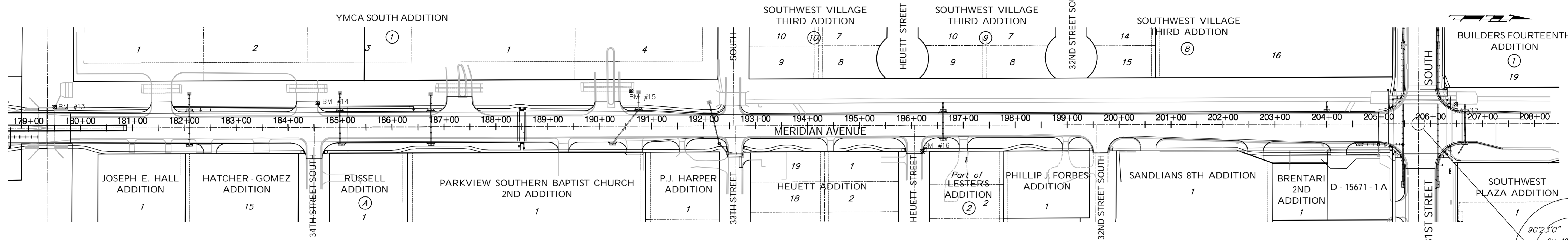


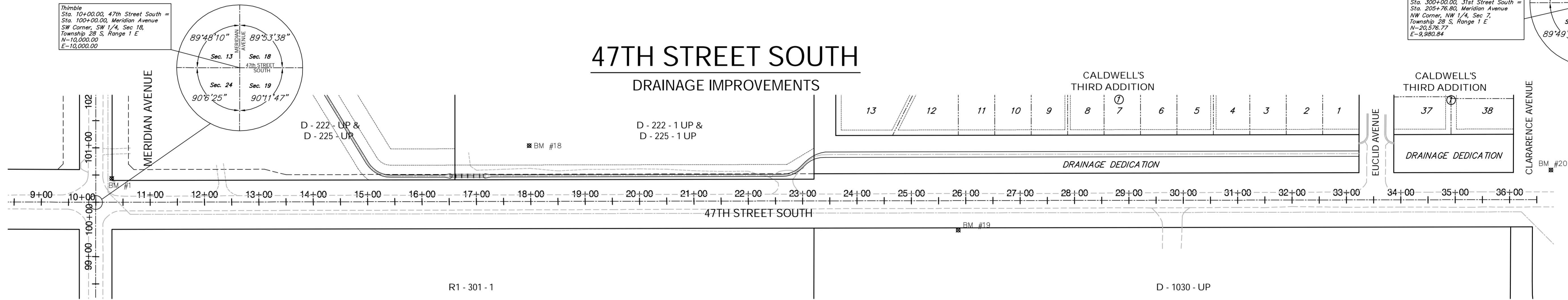
MERIDIAN AVENUE

STREET & SWS IMPROVEMENTS



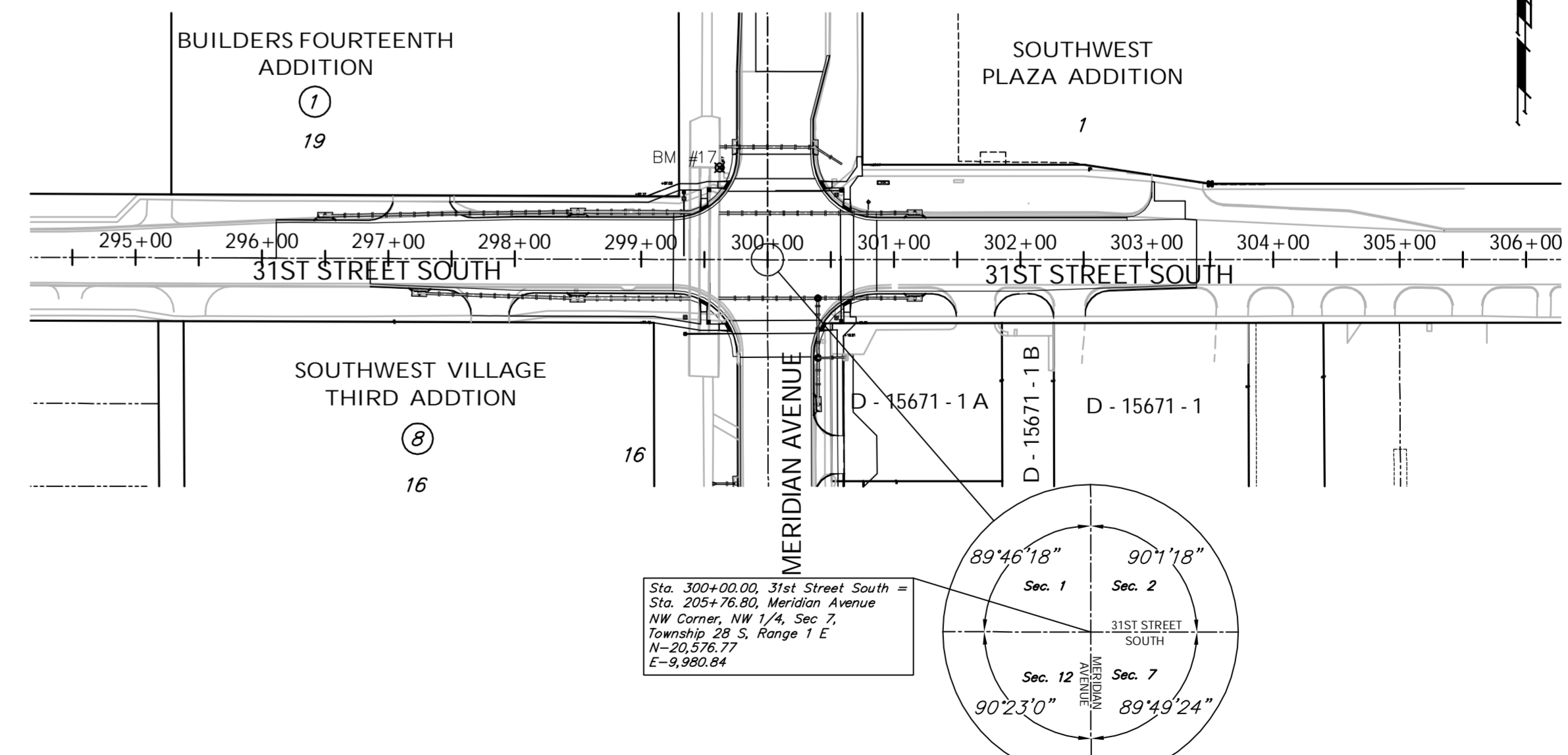
47TH STREET SOUTH

DRAINAGE IMPROVEMENTS



31st STREET SOUTH

STREET & SWS IMPROVEMENTS



BENCHMARKS:

- | | | |
|--|--|---|
| <p>BM #1 - City of Wichita Disc Located in the Northeast Corner of Meridian and 47th Street South
Sta. 100+44, 29' Rt.
Elev. = 1279.18 MSL</p> | <p>BM #2 - Chiseled in the Back of Curb in the North Curb Line of Angel
Sta. 108+77, 154' Lt.
Elev. = 1281.74 MSL</p> | <p>BM #3 - Chiseled in the Back of Curb in the South Curb Line of 45th Street South
Sta. 113+04, 68' Rt.
Elev. = 1279.90 MSL</p> |
| <p>BM #4 - Chiseled in the Back of Curb in the South Curb Line of 44th Street South
Sta. 118+12, 80' Lt.
Elev. = 1280.96 MSL</p> | <p>BM #5 - Chiseled in the Back of Curb in the North Curb Line of 43th Street South
Sta. 124+50, 98' Lt.
Elev. = 1281.40 MSL</p> | <p>BM #6 - Chiseled in the Base at the South End of the Concrete Privacy Wall
Sta. 139+69, 52' Rt.
Elev. = 1282.88 MSL</p> |
| <p>BM #7 - Chiseled in the Base of the Concrete Privacy Wall
Sta. 144+80, 52' Rt.
Elev. = 1283.19 MSL</p> | <p>BM #8 - Chiseled in the Top of the Curb in the Southwest Corner of the Quik Trip Parking Lot
Sta. 151+01, 77' Rt.
Elev. = 1285.30 MSL</p> | <p>BM #9 - Chiseled in the Top of the North End of the Northwest Curb Return of Meridian & MacArthur
Sta. 153+78, 34' Lt.
Elev. = 1284.40 MSL</p> |
| <p>BM #10 - Chiseled in the Top of the Curb Return of the Trailer Park Entrance North of MacArthur
Sta. 160+68, 43' Rt.
Elev. = 1284.54 MSL</p> | <p>BM #11 - Chiseled in the Top of the Curb on the South Side of Meridian at Church Entrance
Sta. 166+69, 56' Lt.
Elev. = 1285.34 MSL</p> | <p>BM #12 - Chiseled in the Top of the Median Curb South of the Interstate 235 Overpass
Sta. 173+26, 7' Rt.
Elev. = 1285.07 MSL</p> |
| <p>BM #13 - City of Wichita Disc on the West Hubguard of RCBC North of Interstate 235
Sta. 179+50, 40' Lt.
Elev. = 1287.55 MSL</p> | <p>BM #14 - Chiseled in the Top of the North Curb Return of the Second Concrete Entrance North of Interstate 235 on the West Side of Meridian
Sta. 184+57, 47' Lt.
Elev. = 1282.75 MSL</p> | <p>BM #15 - Chiseled in the Northeast Corner of the RCBC Under the YMCA Entrance
Sta. 190+61, 68' Lt.
Elev. = 1282.23 MSL</p> |
| <p>BM #16 - Chiseled in the Top of the North Curb Return in the Northwest Corner of Meridian and Heuett Street
Sta. 196+21, 50' Rt.
Elev. = 1283.90 MSL</p> | <p>BM #17 - City of Wichita Disc on the North Hubguard of the RCBC in the Northwest Corner of the Intersection of Meridian and 31st Street North
Sta. 206+50, 40' Lt.
Elev. = 1284.28 MSL</p> | <p>BM #18 - Railroad Spike in Wooden Fence Post in the Northwest Corner of the City Park Gravel Parking Lot
Sta. 17+97, 103' Lt.
Elev. = 1280.15 (MSL)</p> |
| <p>BM #19 - Cut in the Concrete Base of Metal Fence Post 28' West of the Fourth Concrete Pillar West of the South Lakes Park Entrance
Sta. 25+86, 54' Rt.
Elev. = 1277.92 (MSL)</p> | <p>BM #20 - City of Wichita Disc Located in the Northeast Corner of the Intersection of 47th Street South and Clarence Avenue
Sta. 36+56, 54' Lt.
Elev. = 1272.50 (MSL)</p> | |

Drawing File: E:\Meridian\Land\dwg\Base.dwg (KeySheet)

Project No. 0510E396 CAPITAL IMPROVEMENT PROJECT

Design: TPV
Drawn: STAFF
Approved: TPV
Scale: 1" = 100'

PROJECT KEYSHEET
MERIDIAN AVENUE - 47TH STREET SOUTH TO 31ST STREET SOUTH

Baughman Company, P.A.
315 Ellis St., Wichita, KS 67211 P 316-262-7271 F 316-262-0149
ENGR/SEER/NO | SURVEYING | PLANNING | LANDSCAPE ARCHITECTURE

September 2009
SHEET 3 OF 187