

**REINFORCED CONCRETE BASE**

**HANDRAIL SECTION A-A**  
No Scale

**GENERAL NOTES**

The horizontal members of the rail and posts shall be hollow structural tubing. All structural steel and tubing shall comply to A.S.T.M. Designation A36 or A500 Grade B respectively.

Rail shall be fabricated in lengths as shown.

Posts and bars shall be set vertical and shimmed if required.

The Handrail shall be sandblasted prior to painting.

The Handrail shall be painted shop and field with an Zinc/Water Borne Acrylic paint system complying with the Standard Specifications for State Road and Bridge Construction, 1990 Edition Kansas Department of Transportation. Color of paint shall be "Black" and shall be approved by the Engineer before application.

Material and construction shall conform to the Structural Welding Code A.W.S. D1.1-88.

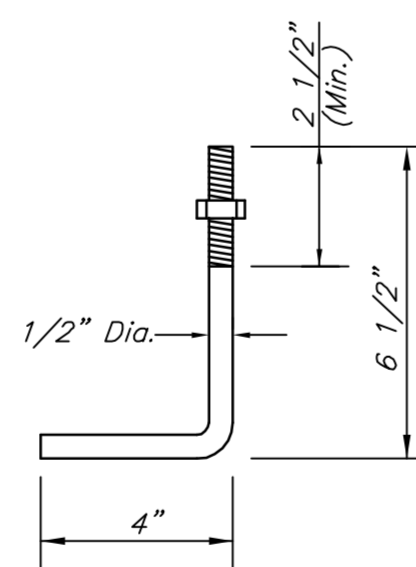
Shop details must be submitted to and approved by the Engineer.

All dimensions are ± and shall be field verified.

Class A Concrete (AE) - 4000 p.s.i. @ 28 days.

Rebar - A615, #4, Gr. 60

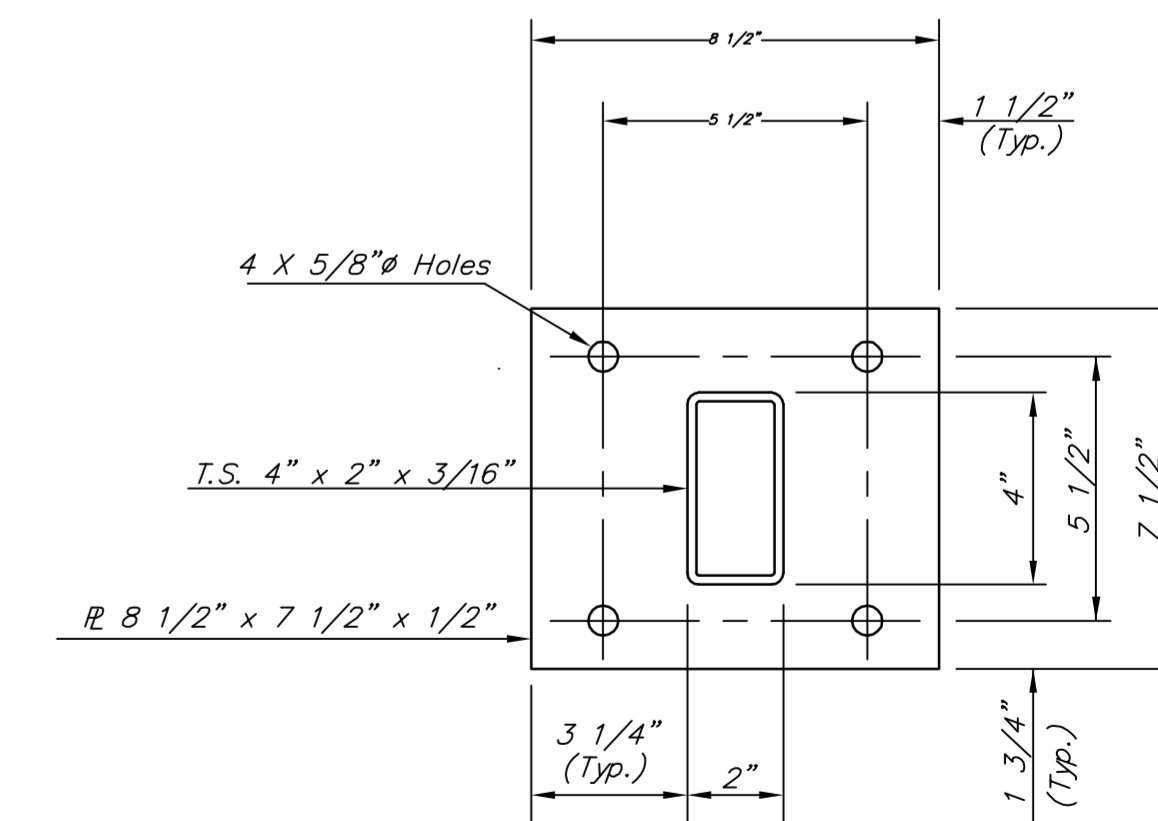
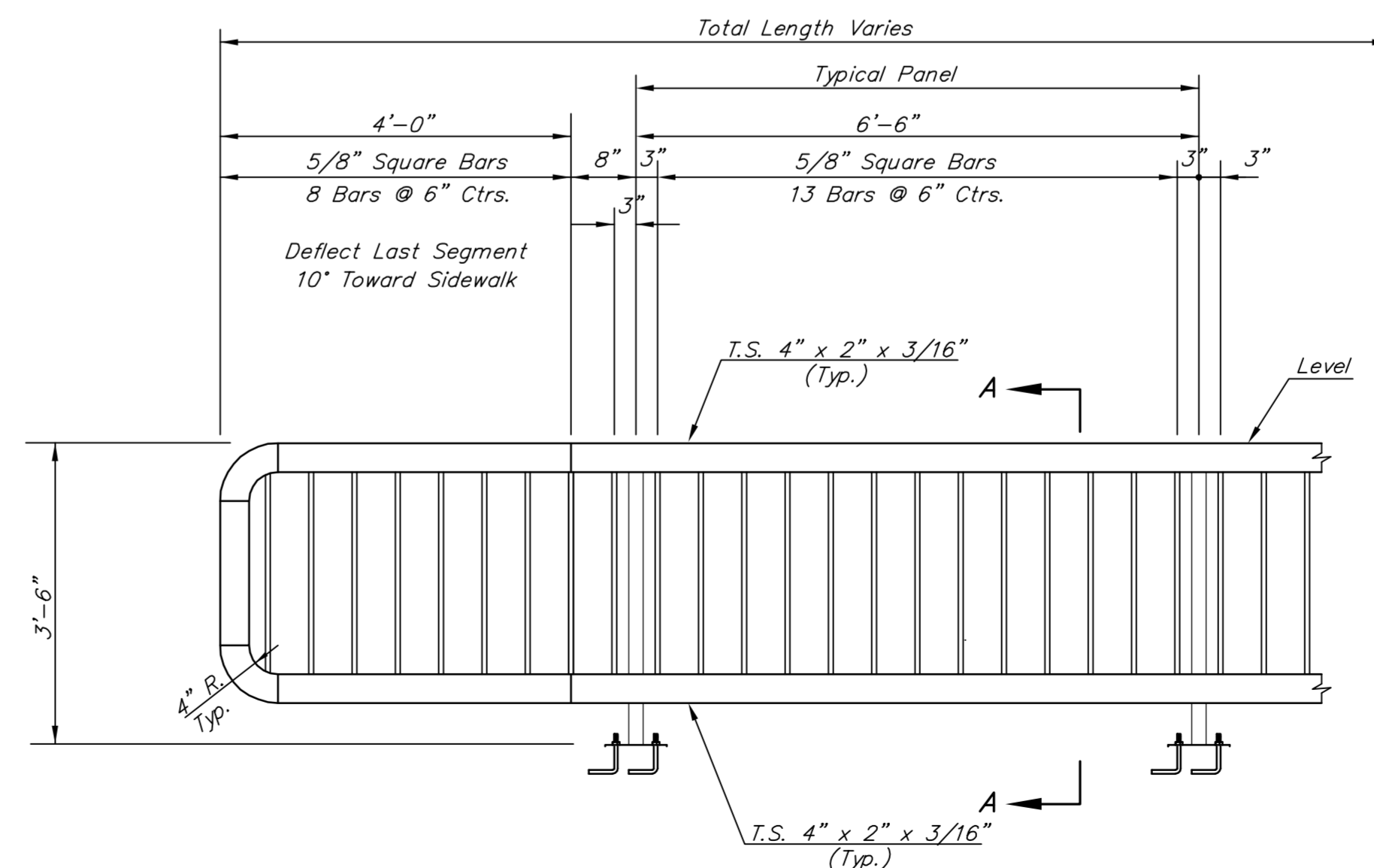
Chamfer exposed edges 3/4" (Typical).



Galvanized (ATSM A153)  
(May Substitute expandable anchor bolts when approved by the Engineer)

**ANCHOR BOLT**

Orient to provide min. 2" edge clearance to either top of footing or adjacent bolts.



**BASE PLATE**  
(57 Required)

Drawing File: E:\eng\Meridian\47th to 31st\Details\Hand Rail.dwg

Design: TPV  
Drawn: STAFF  
Approved: TPV  
Scale: None

Project No. 0510E396 CAPITAL IMPROVEMENT PROJECT

**PEDESTRIAN HAND RAIL DETAIL**

MERIDIAN AVENUE - 47TH STREET SOUTH to 31ST STREET SOUTH

**Baughman Company, P.A.**  
315 Ellis St., Wichita, KS 67211 P 316-262-7171 F 316-262-0149  
Baughman ENGINEERING | SURVEYING | PLANNING | LANDSCAPE ARCHITECTURE

September 2009  
SHEET 17 OF 187