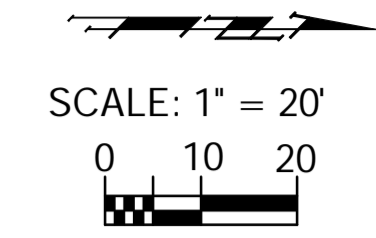


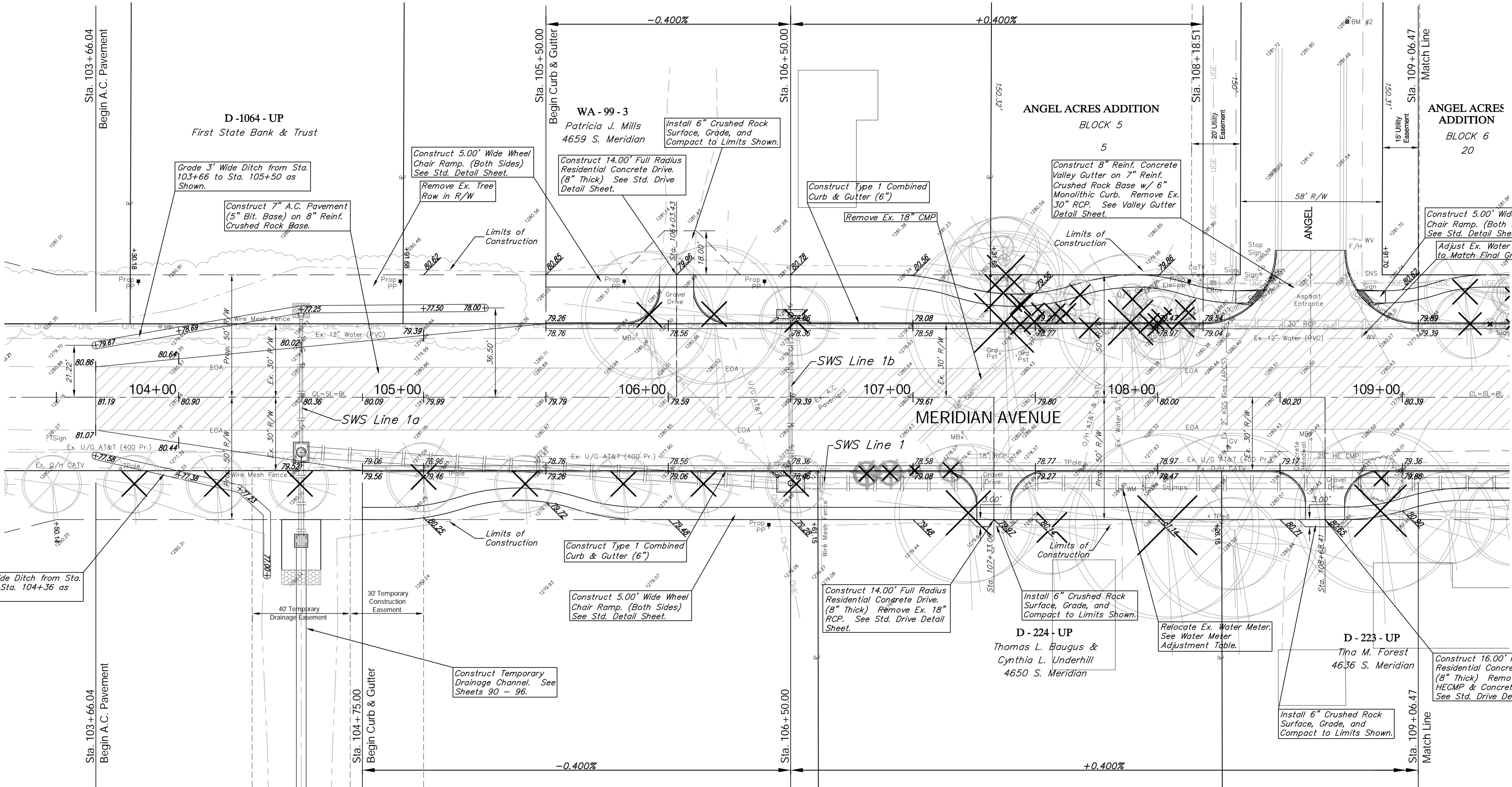
BENCHMARK:
 BM #2 - "Chiseled in the Back of Curb in the North Curb Line of Angel
 Sta. 108+77, 154' Lt.
 Elev. = 1281.74 MSL



P.V.I.
 No V.C.
 Elev. = 1278.86

P.V.I.
 No V.C.
 Elev. = 1278.86

P.V.I.
 No V.C.
 Elev. = 1279.56



Grade 3' Wide Ditch from Sta. 103+66 to Sta. 104+36 as Shown.

Grade 3' Wide Ditch from Sta. 103+66 to Sta. 105+50 as Shown.

Construct 7" A.C. Pavement (5" Bit. Base) on 8" Reinf. Crushed Rock Base.

Construct 5.00' Wide Wheel Chair Ramp. (Both Sides) See Std. Detail Sheet.

Remove Ex. Tree Row in R/W

Construct 14.00' Full Radius Residential Concrete Drive. (8" Thick) See Std. Drive Detail Sheet.

Install 6" Crushed Rock Surface, Grade, and Compact to Limits Shown.

Construct Type 1 Combined Curb & Gutter (6")

Remove Ex. 18" CMP

Construct 8" Reinf. Concrete Valley Gutter on 7" Reinf. Crushed Rock Base w/ 6" Monolithic Curb. Remove Ex. 30" RCP. See Valley Gutter Detail Sheet.

Construct 5.00' Wide Wheel Chair Ramp. (Both Sides) See Std. Detail Sheet.

Adjust Ex. Water Valve to Match Final Grade

Construct Type 1 Combined Curb & Gutter (6")

Construct 5.00' Wide Wheel Chair Ramp. (Both Sides) See Std. Detail Sheet.

Construct 14.00' Full Radius Residential Concrete Drive. (8" Thick) Remove Ex. 18" RCP. See Std. Drive Detail Sheet.

D-224-UP
 Thomas L. Baugus & Cynthia L. Underhill
 4650 S. Meridian

Relocate Ex. Water Meter. See Water Meter Adjustment Table.

D-223-UP
 Tina M. Forest
 4636 S. Meridian

Construct 16.00' Full Radius Residential Concrete Drive. (8" Thick) Remove Ex. 29" HECMP & Concrete Headwall. See Std. Drive Detail Sheet.

Install 6" Crushed Rock Surface, Grade, and Compact to Limits Shown.

Note:
 Trees/Shrubs to be removed are marked thus:

Existing Mailboxes that Conflict with the Proposed Construction Shall be Removed and Reset on Non-Hazardous Supports. Cost to be SUBSIDIARY to "Site Restoration."

Note:
 Pavement, Sidewalks, and Etc. To Be Removed Are Indicated By:

Drawing File: E:\eng\Meridian_47th to 31st\Land\dwg\Base.dwg (Pav01)
 Project No. 0510E396 CAPITAL IMPROVEMENT PROJECT
 MERIDIAN AVENUE PAVING
 Sta. 103+66.04 to Sta. 109+06.47
 MERIDIAN AVENUE - 47TH STREET SOUTH TO 31ST STREET SOUTH

Baughman Company, P.A.
 315 Ellis St., Wichita, KS 67211 P 316-262-7171 F 316-262-0149
 ENGINEERING | SURVEYING | PLANNING | LANDSCAPE ARCHITECTURE

September 2009
 SHEET
 OF
 18
 187