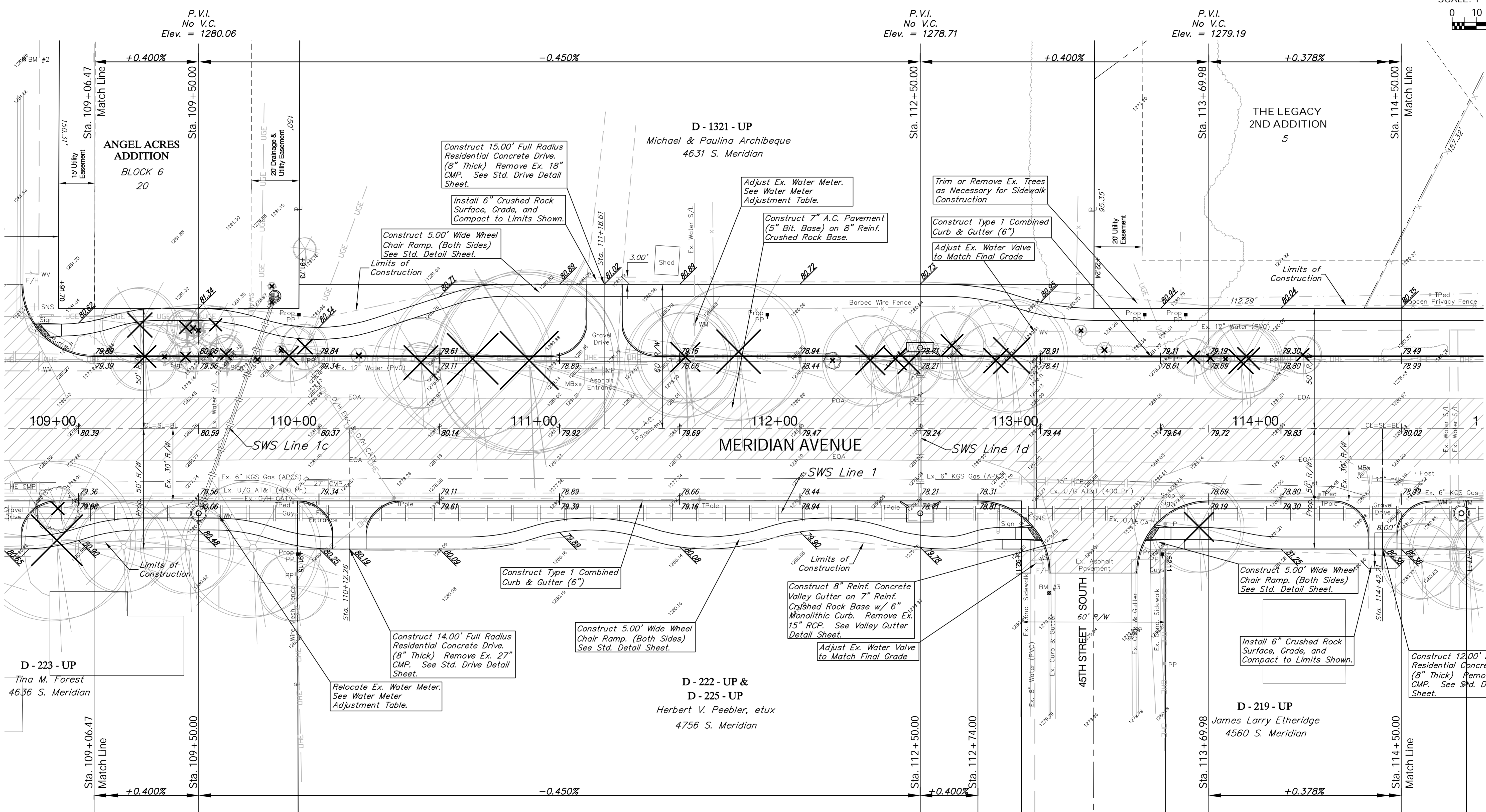
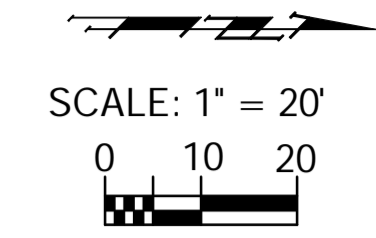


**BENCHMARK:**  
 BM #3 - "U" Chiseled in the Back of Curb in the South Curb  
 Line of 45th Street South  
 Sta. 113+04, 68" Rt.  
 Elev. = 1279.90 MSL



**Note:**  
 Trees/Shrubs to be removed are marked thus:

Existing Mailboxes that Conflict with the Proposed Construction Shall be Removed and Reset on Non-Hazardous Supports. Cost to be SUBSIDIARY to "Site Restoration."

**Note:**  
 Pavement, Sidewalks, and Etc. To Be Removed Are Indicated By:

Drawing File: E:\eng\Meridian\_47th to 31st\Land\dwg\Base.dwg (Pav02)  
 Project No. 0510E396 CAPITAL IMPROVEMENT PROJECT  
**MERIDIAN AVENUE PAVING**  
 Sta. 109+06.47 to Sta.114+50.00  
 MERIDIAN AVENUE - 47TH STREET SOUTH TO 31ST STREET SOUTH

**Baughman Company, P.A.**  
 315 Ellis St., Wichita, KS 67211 P 316-262-0149 F 316-262-0149  
 ENGINEERING | SURVEYING | PLANNING | LANDSCAPE ARCHITECTURE