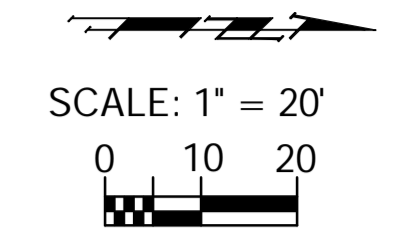
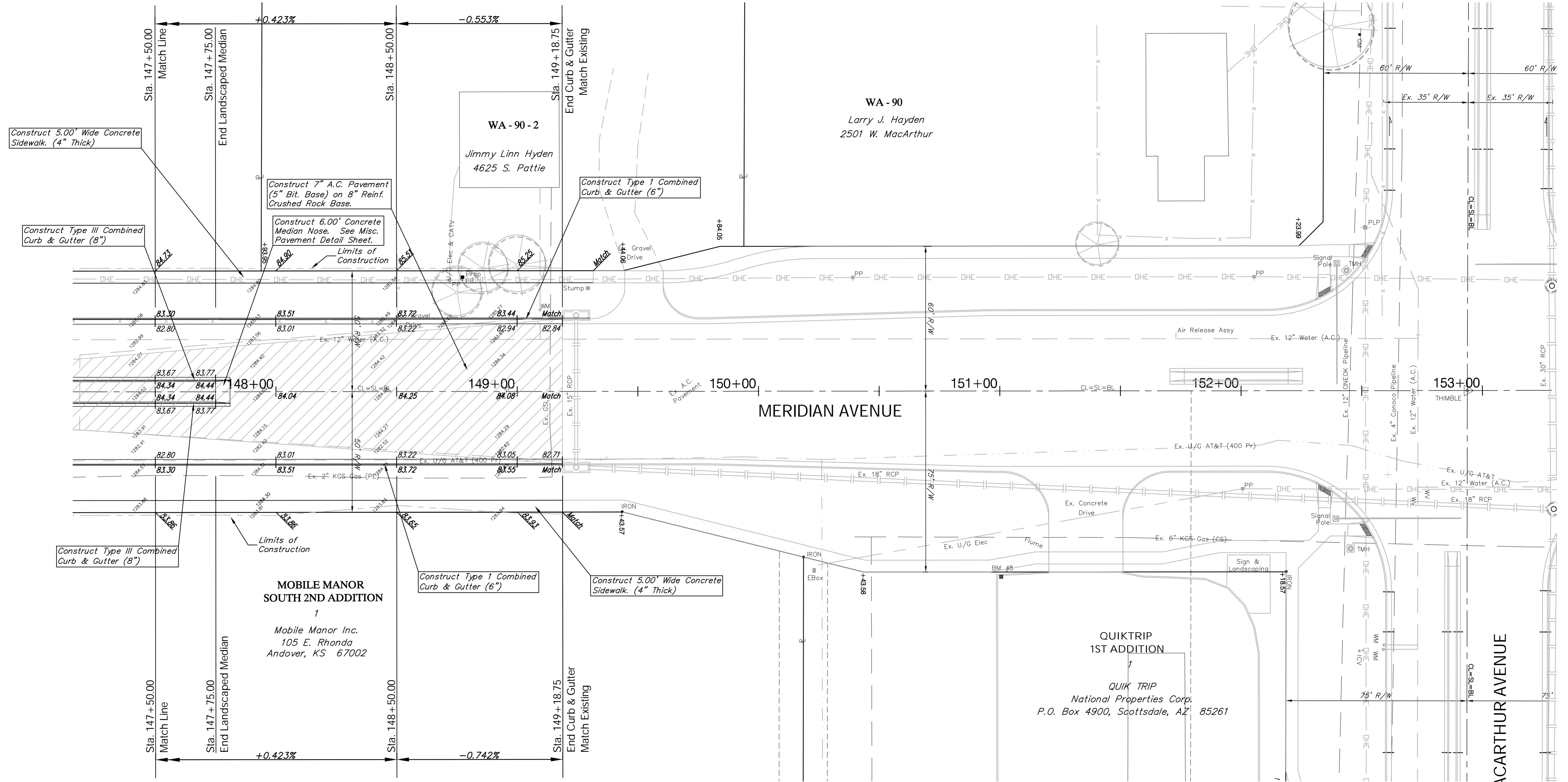


BENCHMARK:  
 BM #8 - "C" Chiseled in the Top of the Parking in the Southwest  
 Corner of the Quik Trip Parking Lot  
 Sta. 151+01, 77' Rt.  
 Elev. = 1285.30 MSL



P.V.I.  
 No V.C.  
 Elev. = 1283.72

P.V.I.  
 No V.C.  
 Elev. = 1283.72



Note:  
 Pavement, Sidewalks, and  
 Etc. To Be Removed Are  
 Indicated By:

Drawing File: E:\eng\Meridian\_47th to 31st\Land\dwg\Base.dwg (Pav09)  
 Project No. 0510E396 CAPITAL IMPROVEMENT PROJECT  
 Design: TPV  
 Drawn: STAFF  
 Approved: TPV  
 Scale: NOTED  
 MERIDIAN AVENUE PAVNG  
 Sta. 147+50.00 to Sta. 153+00.00  
 MERIDIAN AVENUE - 47TH STREET SOUTH TO 31ST STREET SOUTH

**Baughman Company, P.A.**  
 315 Ellis St., Wichita, KS 67211 P 316-262-0149 F 316-262-0149  
 ENGINEERING | SURVEYING | PLANNING | LANDSCAPE ARCHITECTURE

September 2009  
 SHEET  
 26  
 OF  
 187